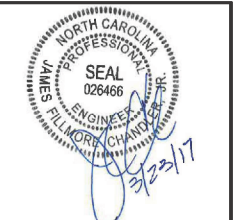
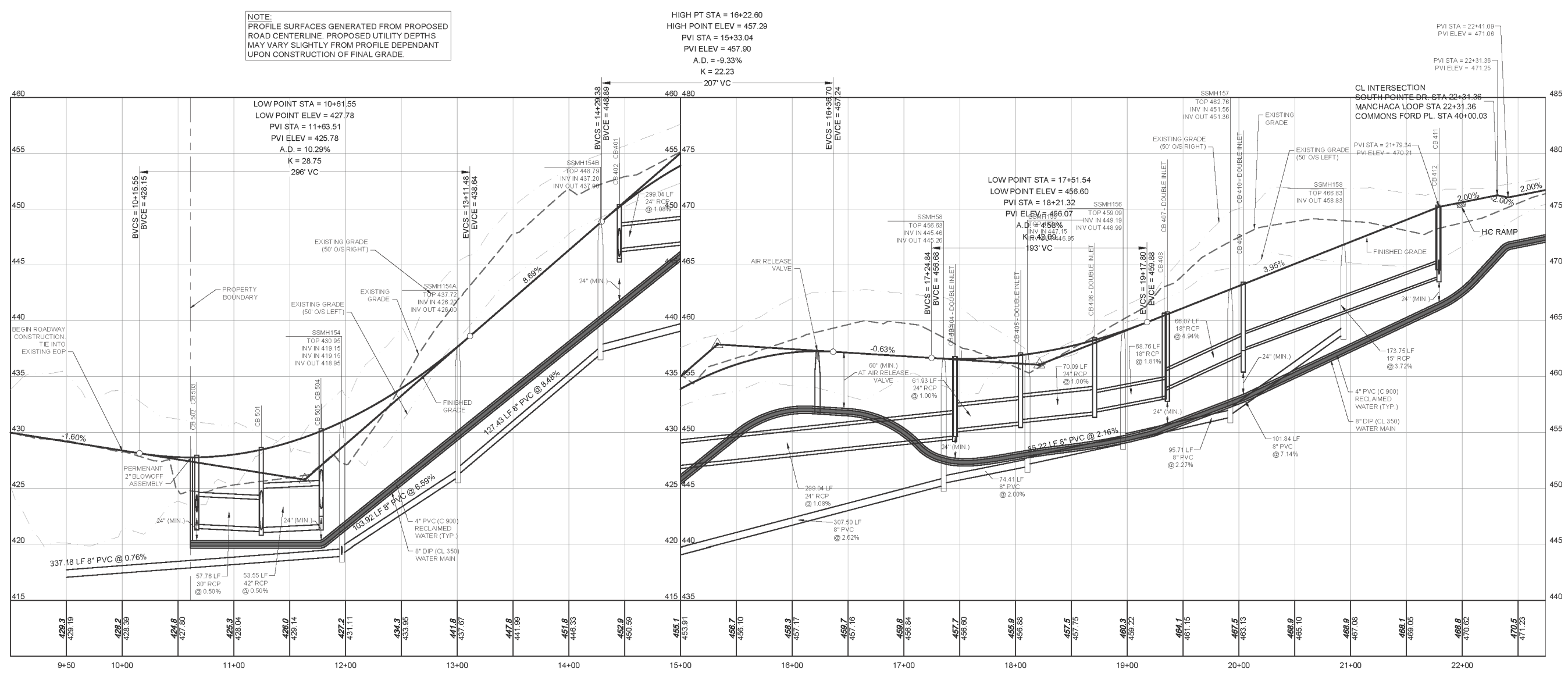


SOUTH POINTE DRIVE STA. 9+50 - STA. 22+50  
(25 MPH DESIGN SPEED)

NOTE:  
PROFILE SURFACES GENERATED FROM PROPOSED  
ROAD CENTERLINE. PROPOSED UTILITY DEPTHS  
MAY VARY SLIGHTLY FROM PROFILE DEPENDANT  
UPON CONSTRUCTION OF FINAL GRADE.

HIGH PT STA = 16+22.60  
HIGH POINT ELEV = 457.29  
PVI STA = 15+33.04  
PVI ELEV = 457.90  
A.D. = -9.33%  
K = 22.23



THIS DRAWING PREPARED AT THE  
RALEIGH OFFICE  
5410 Trinity Road, Suite 02 | Raleigh, NC 27607  
TEL 919.866.9551 FAX 919.833.8124 www.timmons.com

YOUR VISION ACHIEVED THROUGH OURS.

DATE	REVISION DESCRIPTION
08-23-2016	REVISED PER TOC REVIEW COMMENTS
10-27-2016	REVISED PER TOC REVIEW COMMENTS
02-21-2017	REVISED PER TOC REVIEW COMMENTS
03-23-2017	REVISED PER TOC REVIEW COMMENTS

DATE	DRAWN BY	DESIGNED BY	CHECKED BY	SCALE
01/14/2016	---	---	---	---

**TIMMONS GROUP**  
NORTH CAROLINA LICENSE NO. C-1652

FAIRVIEW PARK  
TOWN OF CARY - WAKE COUNTY - NORTH CAROLINA  
SOUTH POINTE DRIVE PLAN AND PROFILE

JOB NO. 35556  
SHEET NO. C6.3

These plans and associated documents are the exclusive property of TIMMONS GROUP and may not be reproduced in whole or in part and shall not be used for any purpose whatsoever, inclusive, but not limited to construction, bidding, and/or construction staking without the express written consent of TIMMONS GROUP.