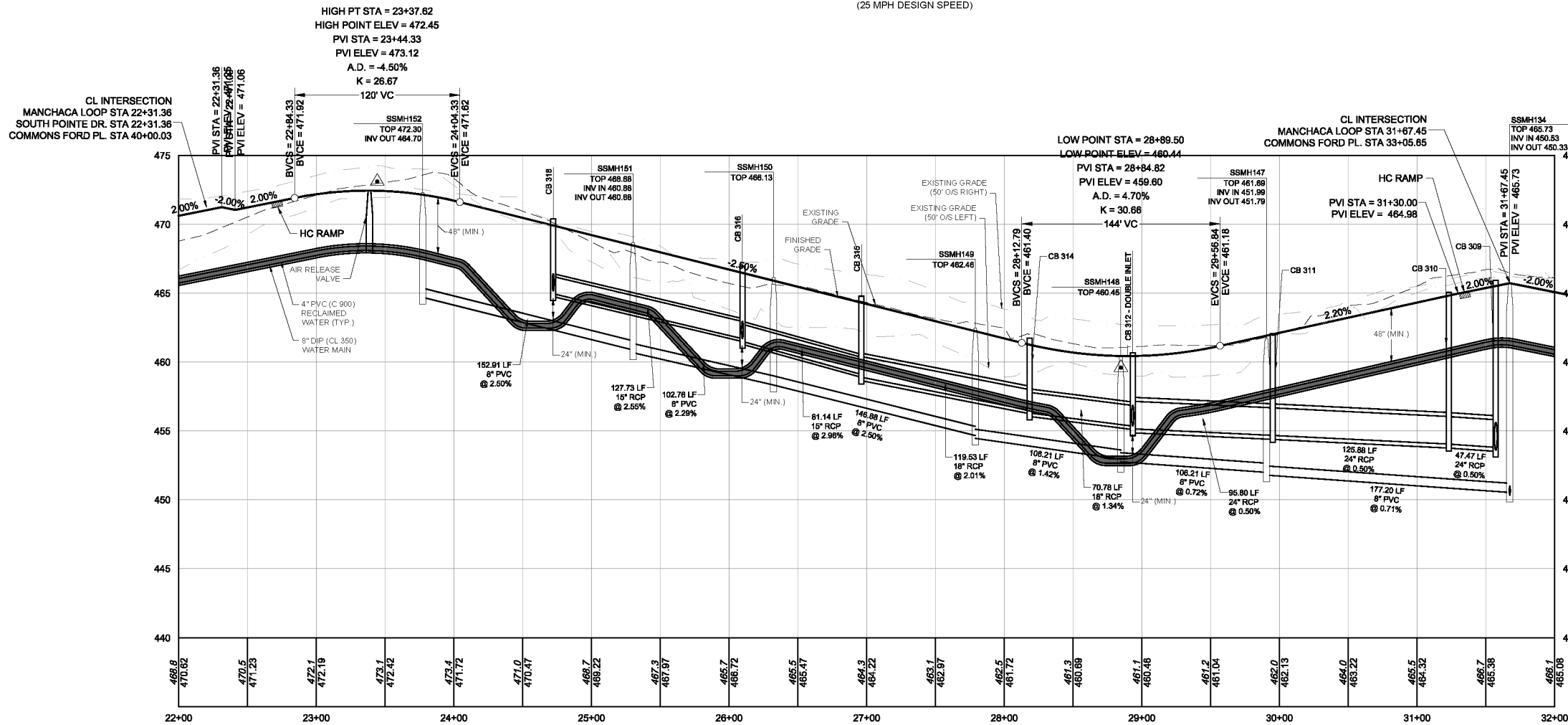


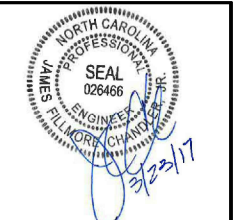
**MANCHACA LOOP**  
 STA. 22+00 - STA. 32+00  
 (25 MPH DESIGN SPEED)



NOTE:  
 PROFILE SURFACES GENERATED FROM PROPOSED  
 ROAD CENTERLINE. PROPOSED UTILITY DEPTHS  
 MAY VARY SLIGHTLY FROM PROFILE DEPENDANT  
 UPON CONSTRUCTION OF FINAL GRADE.

Approved by the Town of Cary  
 Development Review Committee  
 Case Number: 16-58-002  
 ITE #: 16-0791  
 Date: 5/05/2017

*Lindsay Darden*  
 Lindsay Darden, Planner II



THIS DRAWING PREPARED AT THE  
**RALEIGH OFFICE**  
 5410 Trinity Road, Suite 02 | Raleigh, NC 27607  
 TEL 919.866.9551 FAX 919.833.8124 www.timmons.com

YOUR VISION ACHIEVED THROUGH OURS.

DATE	REVISION DESCRIPTION
08-23-2016	REVISED PER TOC REVIEW COMMENTS
10-27-2016	REVISED PER TOC REVIEW COMMENTS
02-21-2017	REVISED PER TOC REVIEW COMMENTS
03-23-2017	REVISED PER TOC REVIEW COMMENTS

DATE	01/14/2016
DRAWN BY	---
DESIGNED BY	---
CHECKED BY	---
SCALE	---

**TIMMONS GROUP**  
 NORTH CAROLINA LICENSE NO. C-1652

**FAIRVIEW PARK**  
 TOWN OF CARY - WAKE COUNTY - NORTH CAROLINA

**MANCHACA LOOP DRIVE PLAN AND PROFILE**

These plans and associated documents are the exclusive property of TIMMONS GROUP and may not be reproduced in whole or in part and may not be used for any purpose whatsoever, inclusive, but not limited to construction, bidding, and/or construction staking without the express written consent of TIMMONS GROUP.

JOB NO.	35556
SHEET NO.	C6.4