



THIS DRAWING PREPARED AT THE
RALEIGH OFFICE
 5410 Trinity Road, Suite 02 | Raleigh, NC 27607
 TEL 919.866.9551 FAX 919.833.8124 www.timmons.com

YOUR VISION ACHIEVED THROUGH OURS.

DATE	REVISION DESCRIPTION
08-23-2016	REVISED PER TOC REVIEW COMMENTS
09-23-2016	REVISED PER TOC REVIEW COMMENTS
10-27-2016	REVISED PER TOC REVIEW COMMENTS
02-21-2017	REVISED PER TOC REVIEW COMMENTS
03-23-2017	REVISED PER TOC REVIEW COMMENTS

DATE
01/14/2016

DRAWN BY

DESIGNED BY

CHECKED BY

SCALE

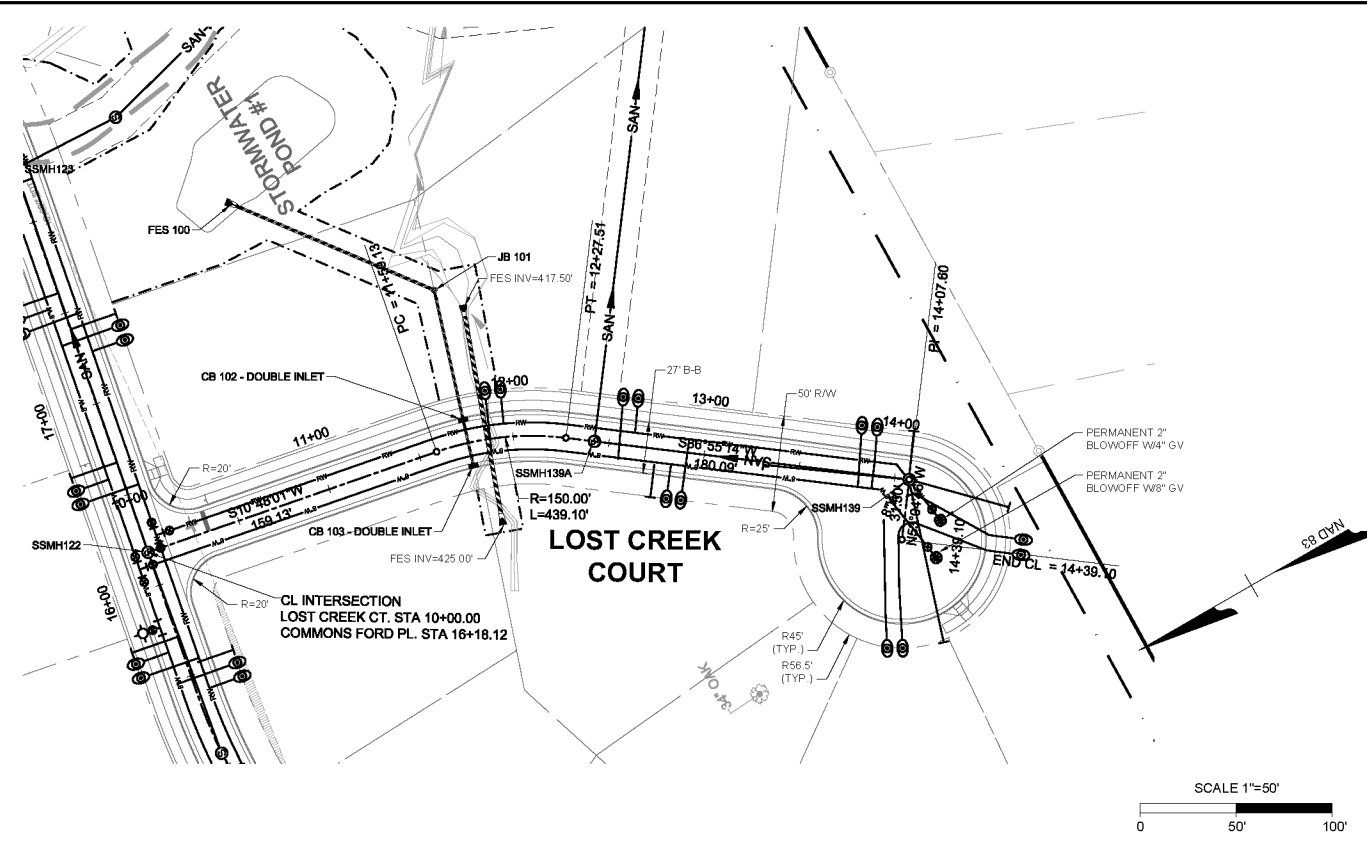
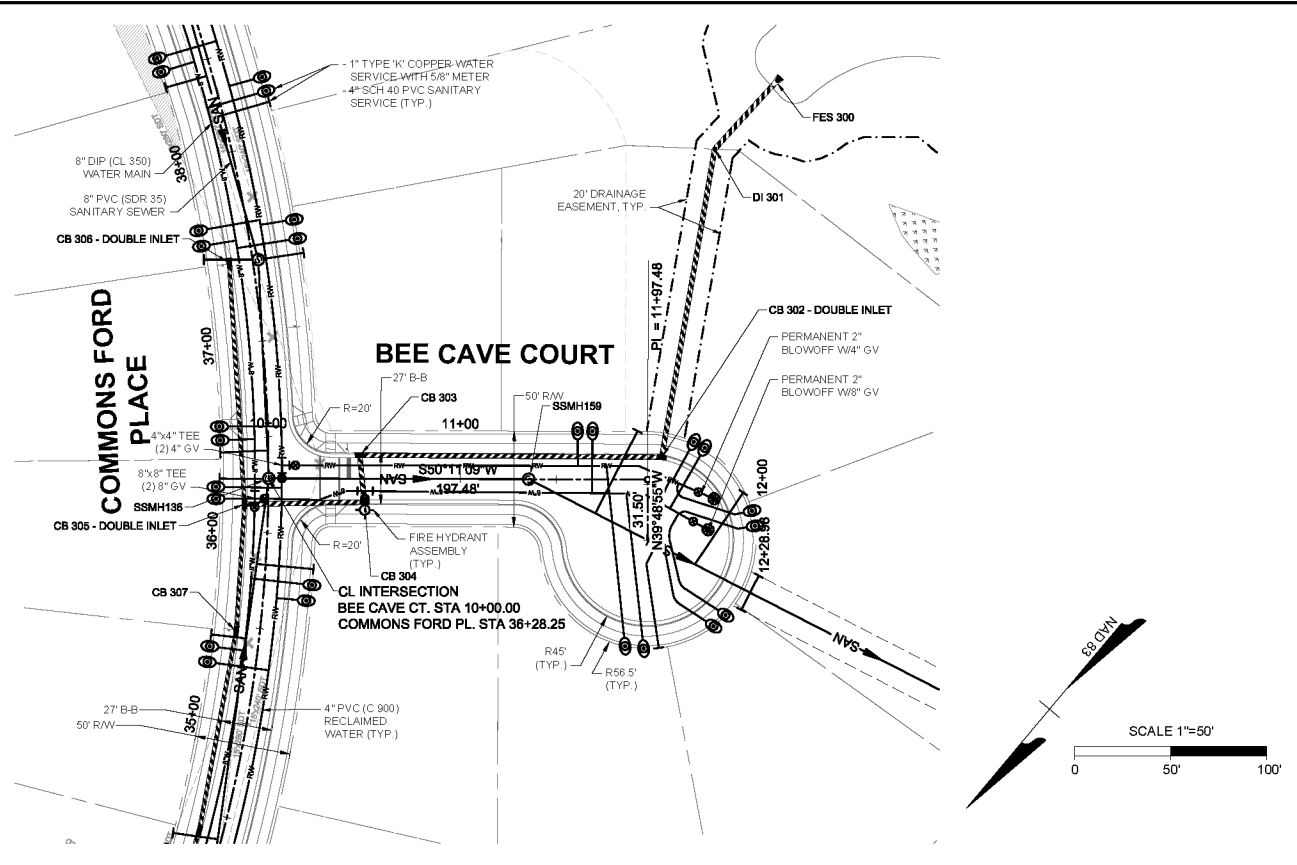
TIMMONS GROUP

FAIRVIEW PARK
 TOWN OF CARY - WAKE COUNTY - NORTH CAROLINA
BEE CAVE & LOST CREEK COURT PLAN AND PROFILE
 NORTH CAROLINA LICENSE NO. C-1652

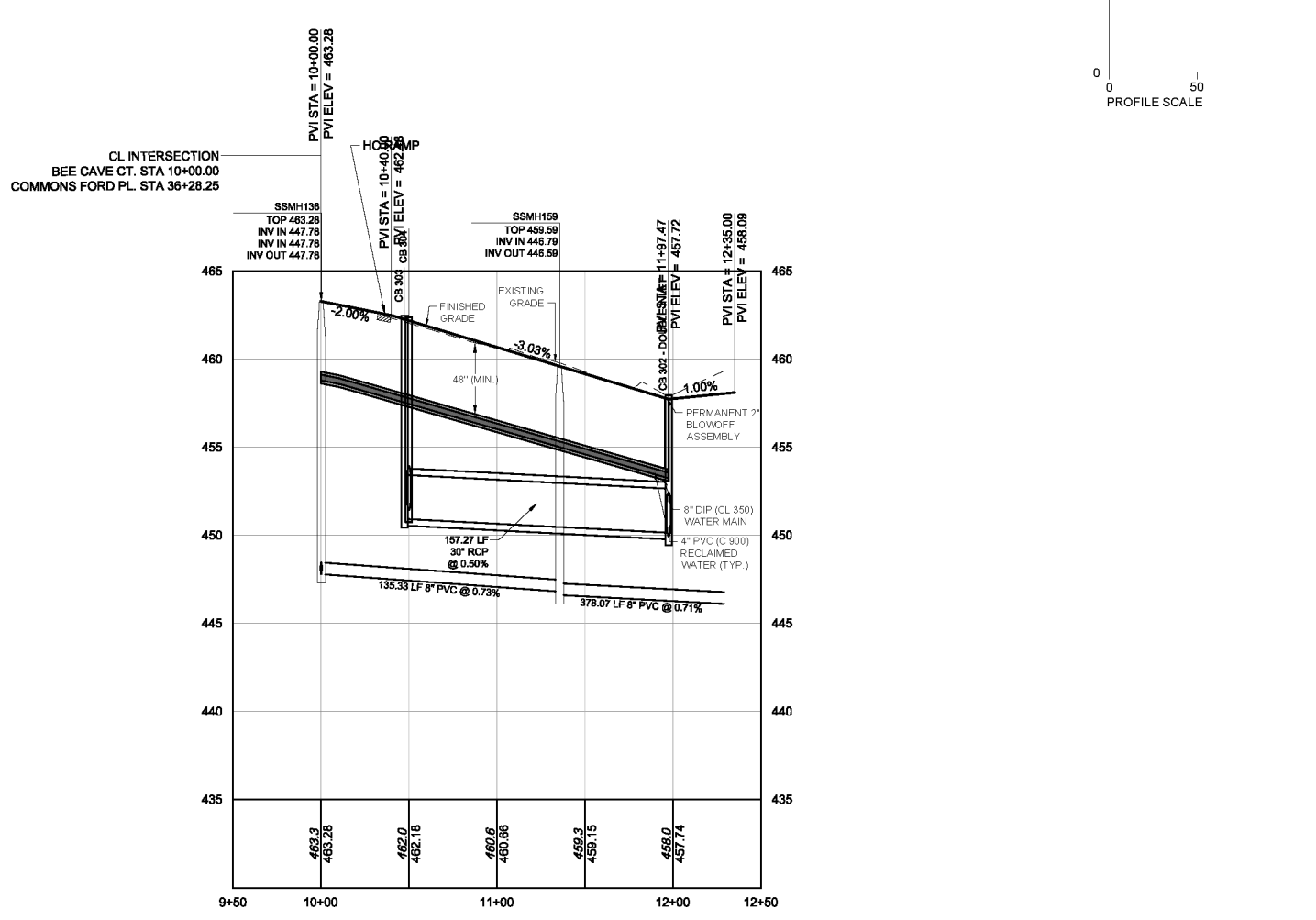
JOB NO.
35556

SHEET NO.
C6.6

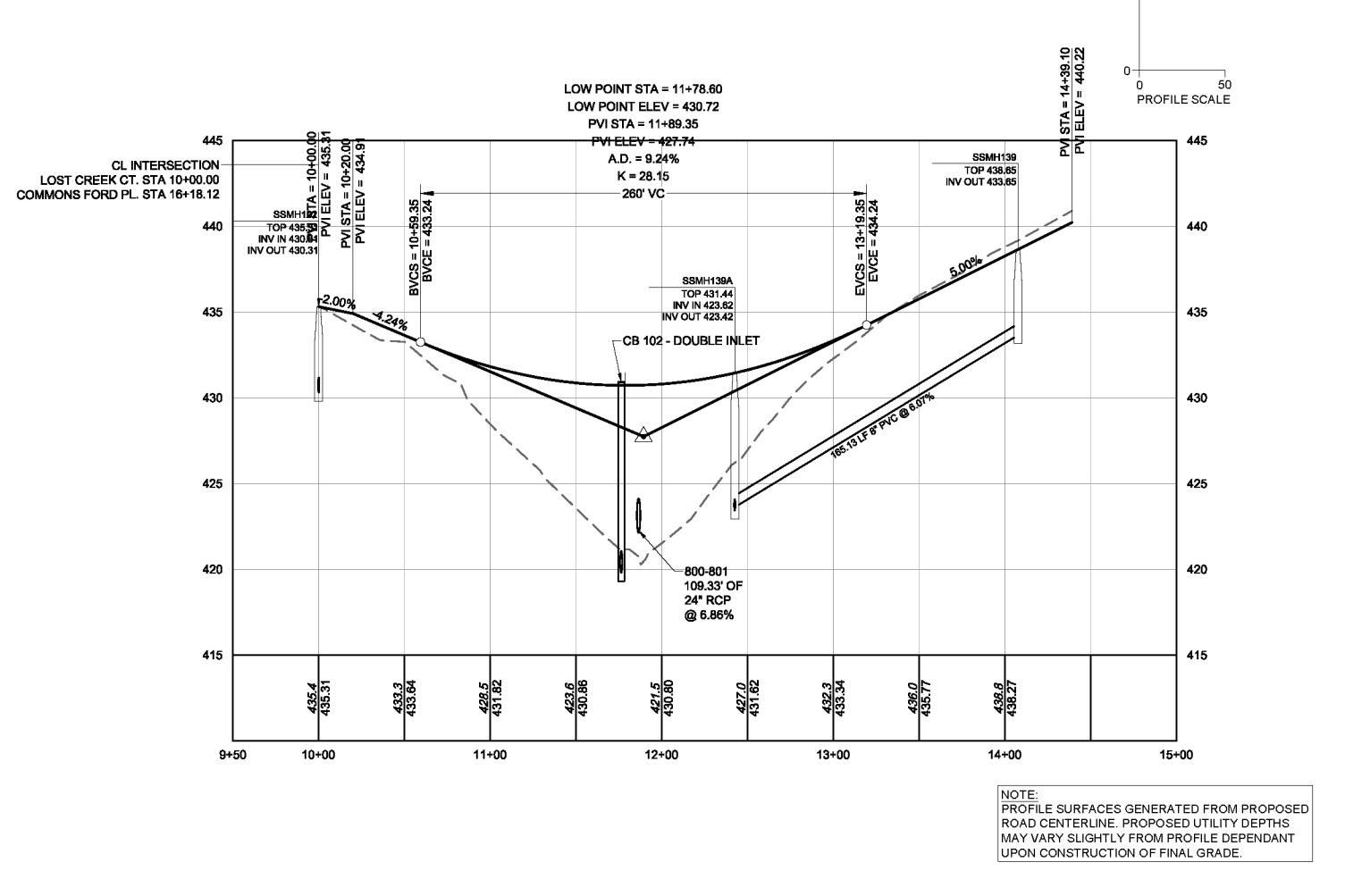
These plans and associated documents are the exclusive property of TIMMONS GROUP and may not be reproduced in whole or in part and shall not be used for any purpose whatsoever, inclusive, but not limited to construction, bidding, and/or construction staking without the express written consent of TIMMONS GROUP.



BEE CAVE COURT
 10+00 - STA. 12+29.98
 (25 MPH DESIGN SPEED)



LOST CREEK COURT
 10+00 - STA. 14+39.10
 (25 MPH DESIGN SPEED)



NOTE:
 PROFILE SURFACES GENERATED FROM PROPOSED ROAD CENTERLINE. PROPOSED UTILITY DEPTHS MAY VARY SLIGHTLY FROM PROFILE DEPENDANT UPON CONSTRUCTION OF FINAL GRADE.

Approved by the Town of Cary
 Development Review Committee
 Case Number: 16-58-002
 HTE #: 16-0791
 Date: 5/05/2017

Lindsay Darden, Planner II