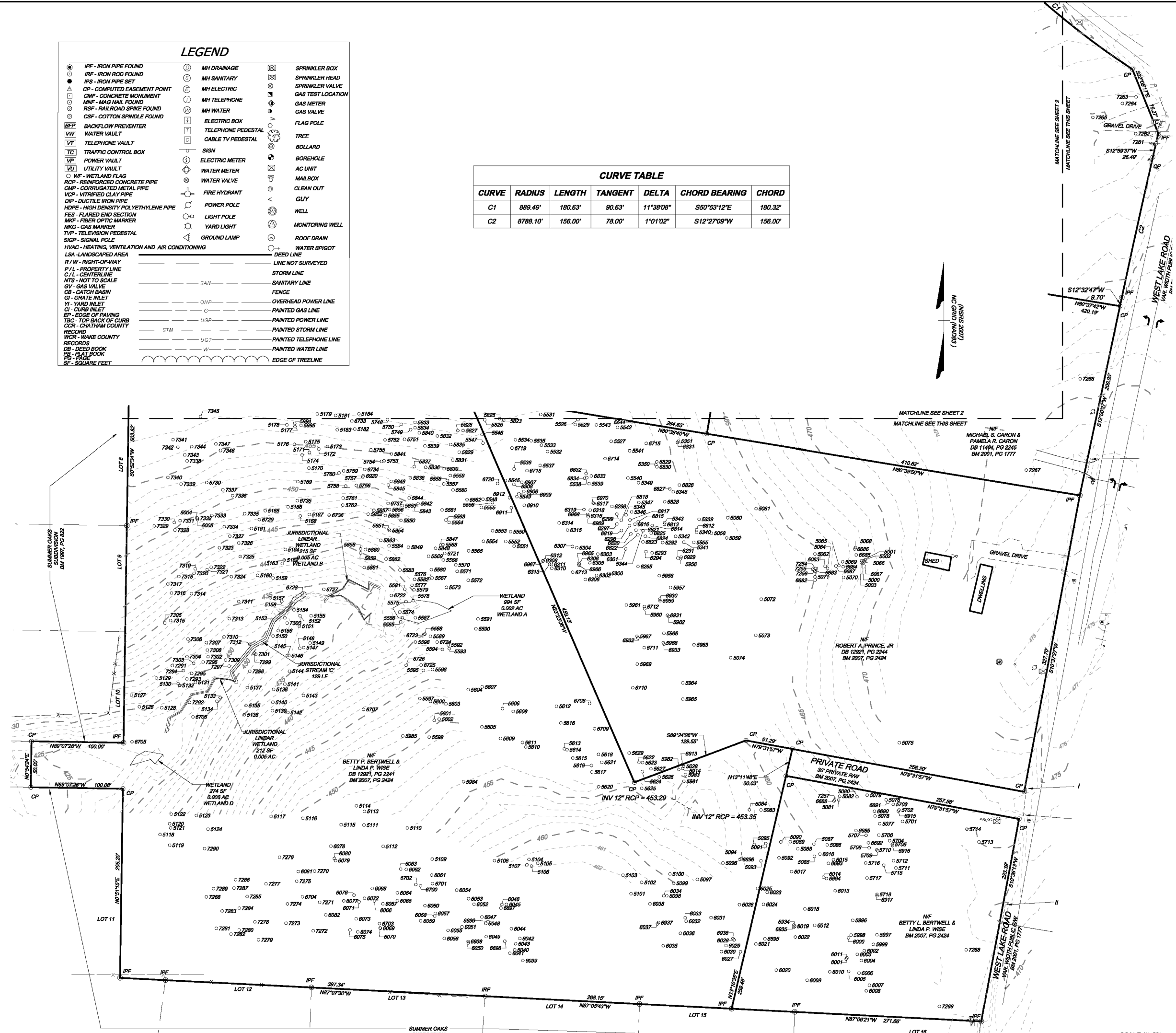
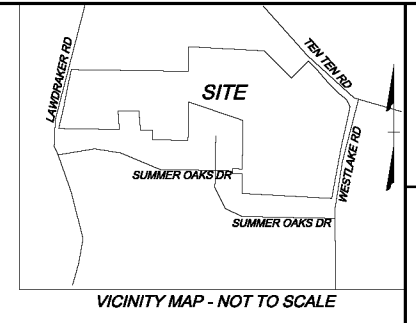


R:\10235556\Westlake\Survey\2016-01-12 Westlake Survey\10-11-16\37247V-Westlake Existing Conditions 10-11-16.dwg | Plotted on 3/21/2017 3:04 PM | by Tim Grissinger

LEGEND					
○	IPF - IRON PIPE FOUND	○	MH DRAINAGE	⊠	SPRINKLER BOX
○	IRF - IRON ROD FOUND	○	MH SANITARY	⊠	SPRINKLER HEAD
●	IPS - IRON PIPE SET	○	MH ELECTRIC	⊠	SPRINKLER VALVE
○	CP - COMPUTED EASEMENT POINT	○	MH TELEPHONE	⊠	GAS TEST LOCATION
○	CMF - CONCRETE MONUMENT	○	MH WATER	⊠	GAS METER
○	MNF - MUD HAIL FOUND	○	ELECTRIC BOX	⊠	GAS VALVE
○	RSF - RAILROAD SPIKE FOUND	○	TELEPHONE PEDESTAL	⊠	FLAG POLE
○	CSF - COTTON SPINDLE FOUND	○	CABLE TV PEDESTAL	⊠	TREE
○	BFP - BACKFLOW PREVENTER	○	SIGN	⊠	BOLLARD
○	WATER VAULT	○	ELECTRIC METER	⊠	BOREHOLE
○	TELEPHONE VAULT	○	WATER METER	⊠	AC UNIT
○	TC - TRAFFIC CONTROL BOX	○	WATER VALVE	⊠	MAILBOX
○	VP - POWER VAULT	○	FIRE HYDRANT	⊠	CLEAN OUT
○	UV - UTILITY VAULT	○	POWER POLE	⊠	GUY
○	WF - WETLAND FLAG	○	LIGHT POLE	⊠	WELL
○	RCP - REINFORCED CONCRETE PIPE	○	YARD LIGHT	⊠	MONITORING WELL
○	CMP - CORRUGATED METAL PIPE	○	GROUND LAMP	⊠	ROOF DRAIN
○	VCP - VITRIFIED CLAY PIPE	○	DEED LINE	○	WATER SPIGOT
○	DIP - DUCTILE IRON PIPE	○	LINE NOT SURVEYED	○	STORM LINE
○	FES - FLARED END SECTION	○	SANITARY LINE	○	FENCE
○	MKF - FIBER OPTIC MARKER	○	OVERHEAD POWER LINE	○	PAINTED GAS LINE
○	MKG - GAS MARKER	○	PAINTED POWER LINE	○	PAINTED STORM LINE
○	TVP - TELEVISION PEDESTAL	○	PAINTED TELEPHONE LINE	○	PAINTED WATER LINE
○	SSP - SIGNAL POLE	○	EDGE OF TRELINE	○	
○	HVAC - HEATING, VENTILATION AND AIR CONDITIONING				
○	LSA - LANDSCAPED AREA				
○	R/W - RIGHT-OF-WAY				
○	P/L - PROPERTY LINE				
○	C/L - CENTERLINE				
○	NTS - NOT TO SCALE				
○	GV - GAS VALVE				
○	CB - CATCH BASIN				
○	GI - GRATE INLET				
○	YI - YARD INLET				
○	CI - CURB INLET				
○	EP - EDGE OF PAVING				
○	TBC - TOP BACK OF CURB				
○	CCR - CHATHAM COUNTY RECORD				
○	WCR - WAKE COUNTY RECORDS				
○	DB - DEED BOOK				
○	PL - PLAT BOOK				
○	PF - PAGE				
○	SF - SQUARE FEET				

CURVE TABLE						
CURVE	RADIUS	LENGTH	TANGENT	DELTA	CHORD BEARING	CHORD
C1	889.48'	180.63'	90.63'	11°38'08"	S80°53'12"E	180.32'
C2	8788.10'	156.00'	78.00'	1°01'02"	S12°27'09"W	156.00'

- REFERENCES
 DB 08-E, PG 336
 DB 1650, PG 29
 DB 1657, PG 243
 DB 3514, PG 513
 DB 5187, PG 340
 DB 11404, PG 2245
 DB 12921, PG 2244
 DB 12921, PG 2241
 DB 14553, PG 12
 BM 1984, PG 348
 BM 1986, PG 72
 BM 1986, PG 1312
 BM 1990, PG 197
 BM 1992, PG 353
 BM 1992, PG 635
 BM 1997, PG 822
 BM 1997, PG 1789
 BM 2001, PG 1777
 BM 2007, PG 2424



I, DAVID A. PERFER, PLS HEREBY CERTIFY THAT THIS PLAT WAS DRAWN UNDER MY SUPERVISION FROM AN ACTUAL SURVEY MADE UNDER MY SUPERVISION FROM REFERENCES AS NOTED ON SAID MAP. THAT THE BOUNDARIES NOT SURVEYED ARE CLEARLY INDICATED AS DASHED LINES, AND DRAWN FROM INFORMATION AS INDICATED UNDER REFERENCES. THAT THE RATIO OF PRECISION AS CALCULATED IS GREATER THAN 1:10,000; THAT THIS PLAT WAS PREPARED IN ACCORDANCE WITH G.S. 47-30 AS AMENDED. THE FOLLOWING INFORMATION WAS USED TO PERFORM GPS SURVEY:
 (1) CLASS OF SURVEY: "CLASS A"
 (2) POSITIONAL ACCURACY: 0.04"
 (3) TYPE OF GPS FIELD PROCEDURE: NCVRS
 (4) DATE OF SURVEY: 10/01/2015
 (5) DATUM/EPOCH: NAD83 NRS 2007 - 800 EPOCHS
 (6) PUBLISHED/FIXED-CONTROL USE: NCVRS
 (7) GEOID MODEL: 2012 (CONUS)
 (8) COMBINED GRID FACTOR(S): 0.999985316
 (9) UNITS: US SURVEY FEET

WITNESS MY ORIGINAL SIGNATURE, REGISTRATION NUMBER AND SEAL THIS 12TH DAY OF JANUARY, A.D., 2016

L-4851
 REGISTRATION NUMBER SURVEYOR

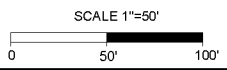
PRELIMINARY - NOT FOR SALES, RECORDATION OR CONVEYANCES

Approved by the Town of Cary
 Development Review Committee
 Case Number: 16-58-002
 ITE #: 16-0791
 Date: 5/05/2017

Lindsay Darden, Planner II

TREE SURVEY FOR
 RELIABUILT, LLC
 1010 AND WESTLAKE ROAD
 APEX, NORTH CAROLINA

SWIFT CREEK TNSHP	WAKE COUNTY, NC
Date: JAN. 12, 2016	Scale: 1"= 50'
Sheet C1.3	J.N.: 37247
Drawn by: KS	Checked by: DAP
Revised:	



THIS DRAWING BEARS AT THE
 MAJOR OFFICE
 5410 TRINITY ROAD, SUITE 112 | RALEIGH, NC 27607
 TEL: 919.487.4400 | FAX: 919.487.4401
 NORTH CAROLINA LICENSE NUMBER C-1652

YOUR VISION ACHIEVED THROUGH OURS.

Technology
 Infrastructure
 Residential
 Site Development

TIMMONS GROUP