

PHASE I DETAIL



THIS DRAWING PREPARED AT THE
RALEIGH OFFICE
 5410 Trinity Road, Suite 02 | Raleigh, NC 27607
 TEL 919.866.9551 FAX 919.833.8124 www.timmons.com

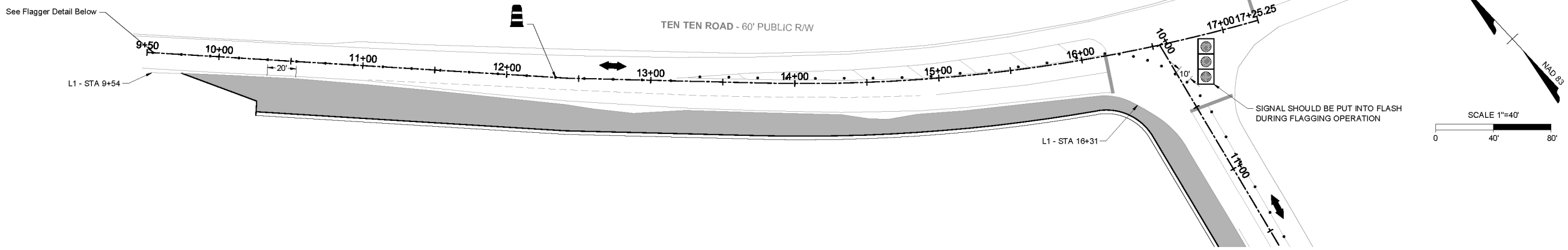
YOUR VISION ACHIEVED THROUGH OURS.

DATE: 08/25/16
 DRAWN BY: CEL
 DESIGNED BY: CEL
 CHECKED BY: JPH
 SCALE: SEE PLAN

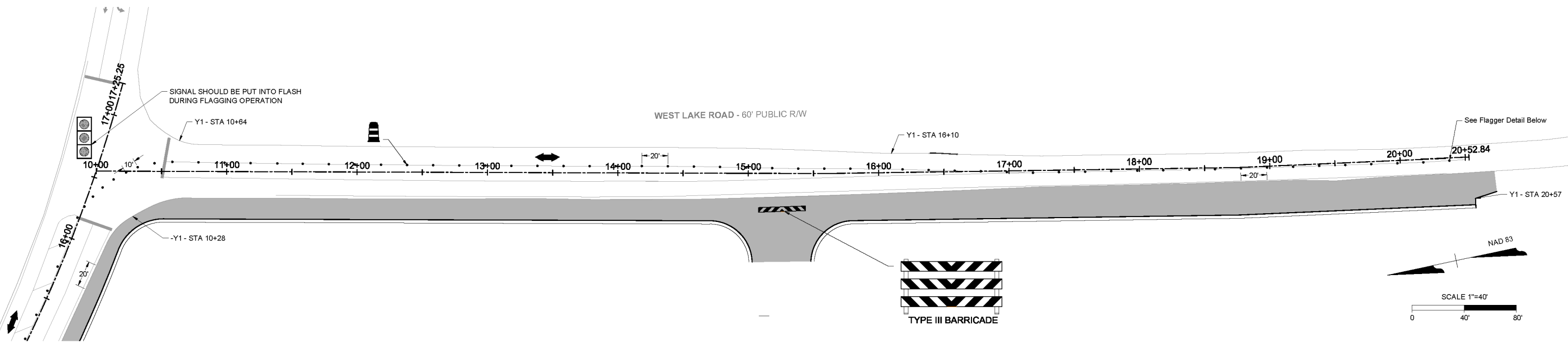
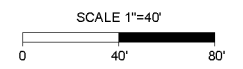
TIMMONS GROUP
 NORTH CAROLINA LICENSE NO. C-1652
 FAIRVIEW PARK
 TOWN OF CARY - WAKE COUNTY - NORTH CAROLINA
TEN TEN ROAD & WESTLAKE ROAD PHASE I TRAFFIC CONTROL PLAN

JOB NO. 35556
 SHEET NO. C12.0

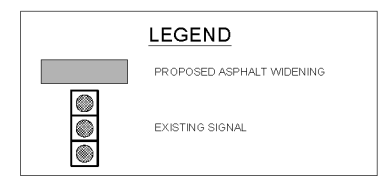
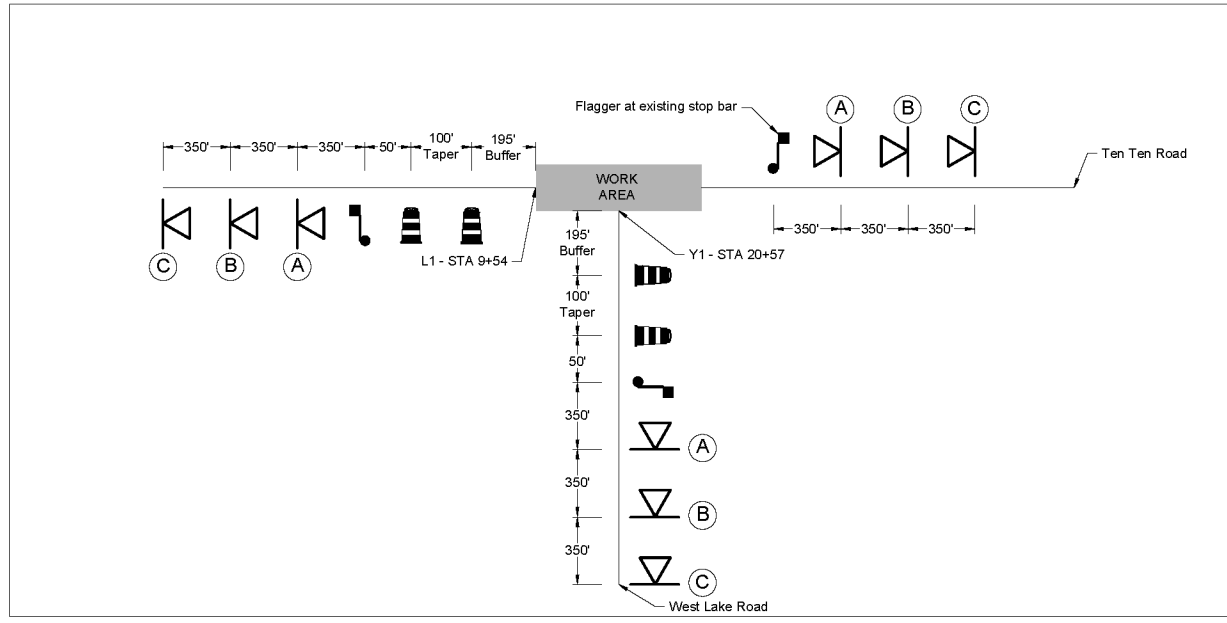
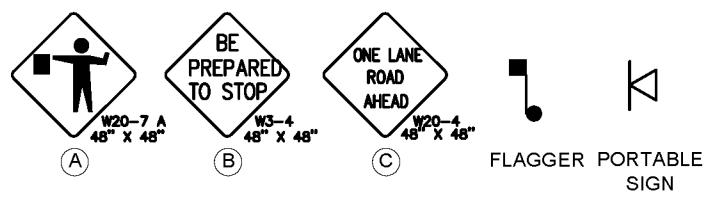
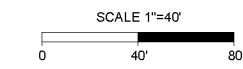
These plans and associated documents are the exclusive property of TIMMONS GROUP and may not be reproduced in whole or in part and shall not be used for any purpose whatsoever, inclusive, but not limited to construction, bidding, and/or construction staking without the express written consent of TIMMONS GROUP.



TEN TEN ROAD - PUBLIC 60' RW



WEST LAKE ROAD - PUBLIC 60' RW



Approved by the Town of Cary
 Development Review Committee
 Case Number: 16-58-002
 HTE #: 16-0791
 Date: 5/05/2017
 Lindsay Darden, Planner II

