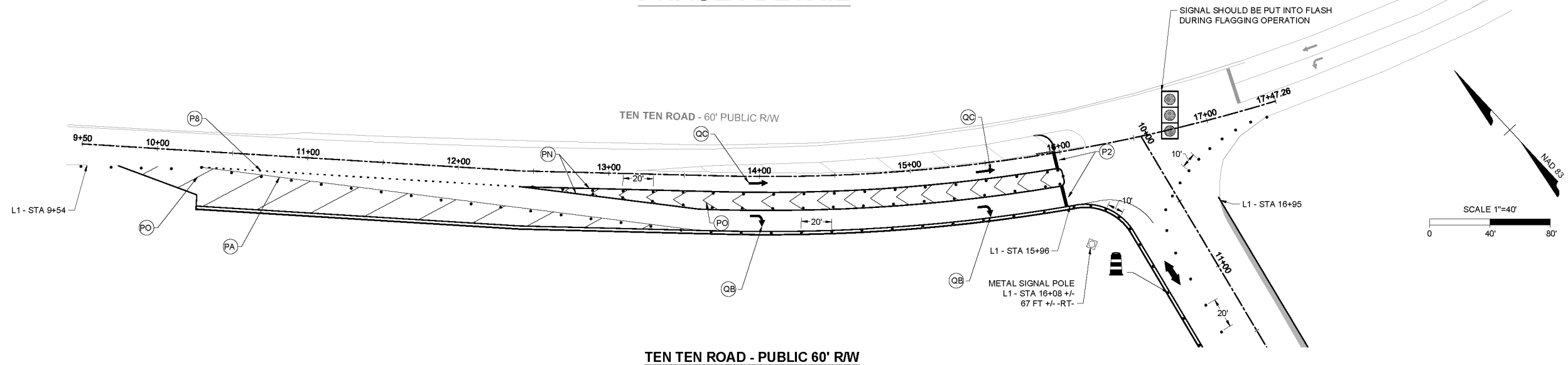
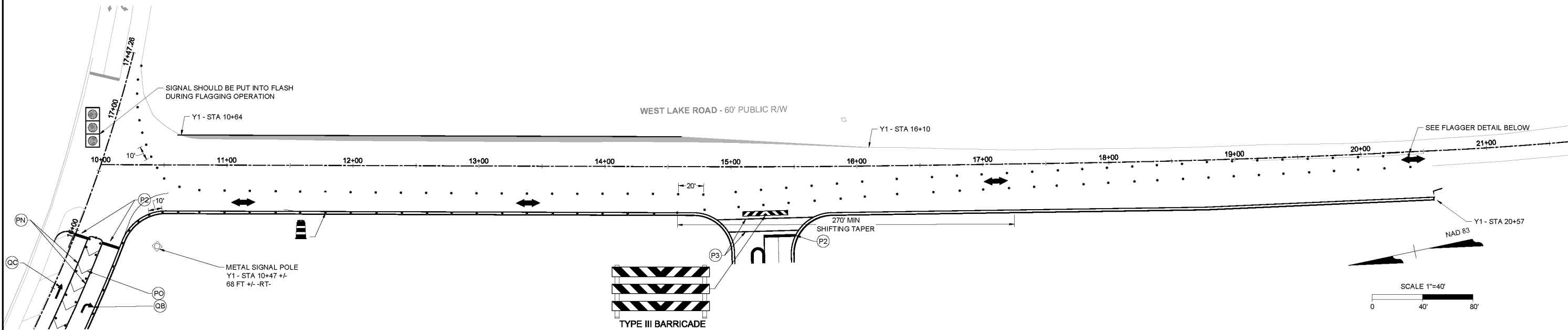


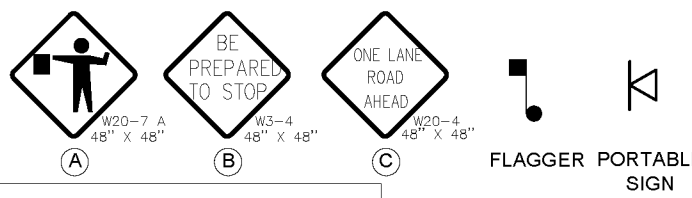
PHASE I DETAIL



TEN TEN ROAD - PUBLIC 60' RW



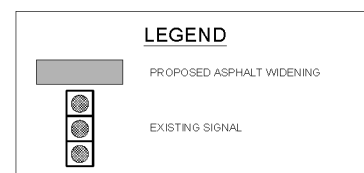
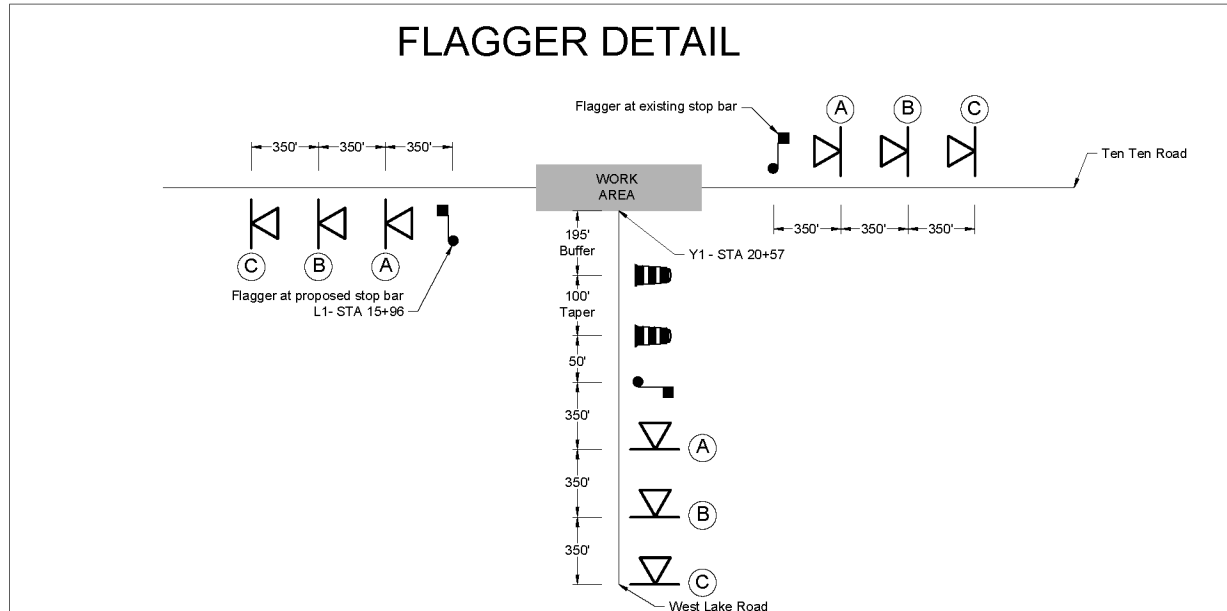
WEST LAKE ROAD - PUBLIC 60' RW



TEMPORARY PAVEMENT MARKING LEGEND

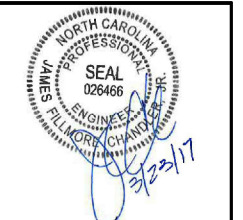
PAINT

- (P2) WHITE STOP BAR (24")
- (P3) WHITE CROSSWALK LINE (24")
- (P8) 2 FT. - 6 FT./SP WHITE MINISKIP (4")
- (PA) WHITE EDGELINE (4")
- (PD) 3 FT. - 9 FT./SP WHITE MINISKIP (4")
- (PE) WHITE SOLID LANE LINE (4")
- (PI) YELLOW DOUBLE CENTER (4")
- (PN) WHITE GORE LINE (8")
- (PO) WHITE DIAGONAL (8")
- (PP) YELLOW DIAGONAL (8")
- (QA) LEFT TURN ARROW
- (QB) RIGHT TURN ARROW
- (QC) STRAIGHT ARROW



Approved by the Town of Cary
 Development Review Committee
 Case Number: 16-58-002
 HTE #: 16-0791
 Date: 5/05/2017

Lindsay Darden
 Lindsay Darden, Planner II



THIS DRAWING PREPARED AT THE
RALEIGH OFFICE
 5410 Trinity Road, Suite 02 | Raleigh, NC 27607
 TEL 919.866.9551 FAX 919.833.8124 www.timmons.com

YOUR VISION ACHIEVED THROUGH OURS.

DATE	REVISION DESCRIPTION
08-23-2016	REVISED PER TOC REVIEW COMMENTS
09-23-2016	REVISED PER TOC REVIEW COMMENTS
01-12-2017	REVISED PER TOC REVIEW COMMENTS
02-21-2017	REVISED PER TOC REVIEW COMMENTS
03-23-2017	REVISED PER TOC REVIEW COMMENTS

DATE	08/25/16
DRAWN BY	CEL
DESIGNED BY	CEL
CHECKED BY	JPH
SCALE	SEE PLAN

TIMMONS GROUP

FAIRVIEW PARK
 NORTH CAROLINA LICENSE NO. C-1652

TOWN OF CARY - WAKE COUNTY - NORTH CAROLINA
TEN TEN ROAD & WESTLAKE ROAD PHASE I TRAFFIC CONTROL PLAN

JOB NO. 35556
 SHEET NO. C13.0

These plans and associated documents are the exclusive property of TIMMONS GROUP and may not be reproduced in whole or in part and may not be used for any purpose whatsoever, inclusive, but not limited to construction, bidding, and/or construction staking without the express written consent of TIMMONS GROUP.