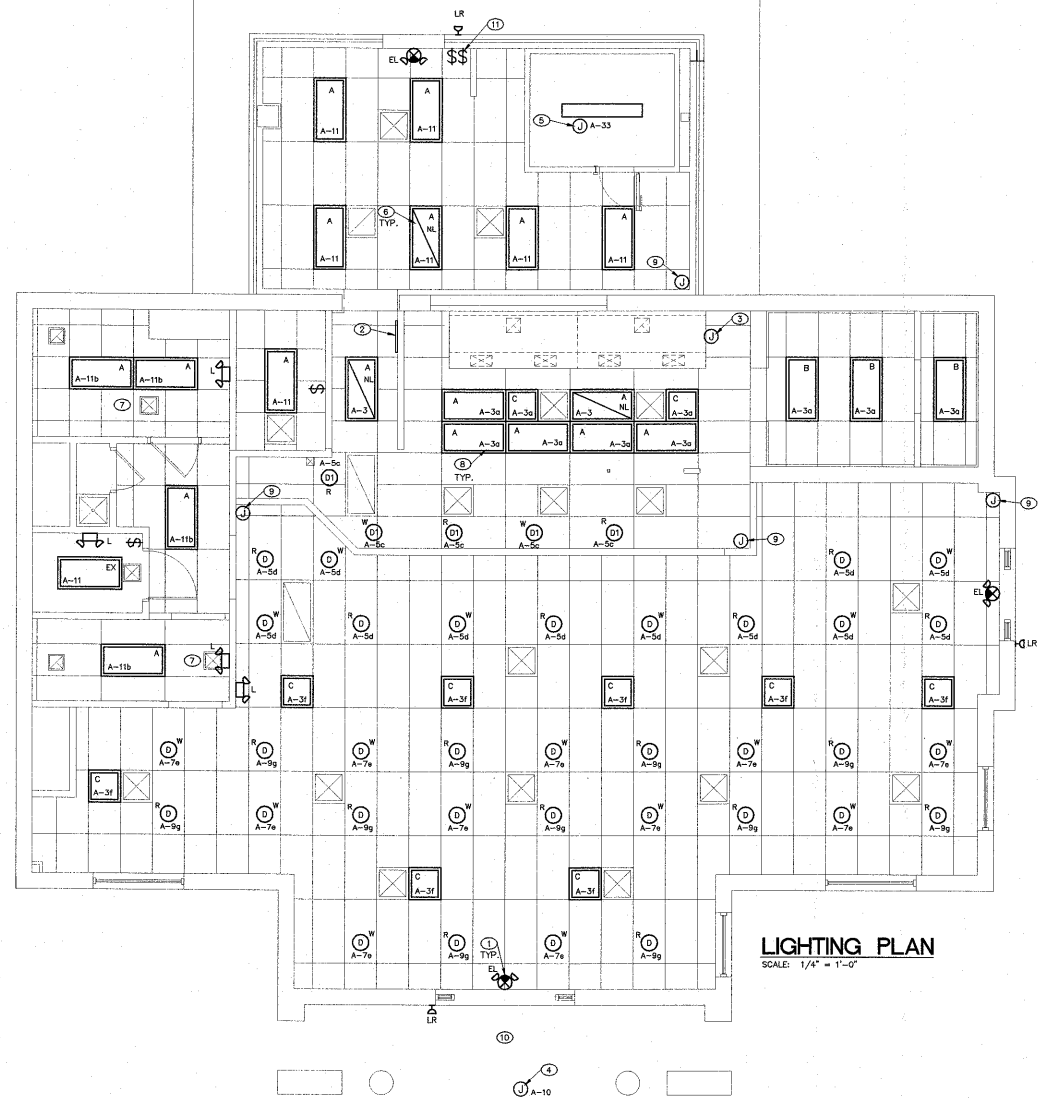


LUMINAIRE SCHEDULE

MARK	QUANTITY	DESCRIPTION	MOUNT. HEIGHT	MANUFACTURER	MODEL NUMBER	LAMPS	FIXTURE WATTAGE	REMARKS
A	18	2'x4' LAY-IN TROFFER	CEILING	LITHONIA	20TB432A12101/46EB	4-F32T8/TL35	109	SEE NOTE 1
B	3	2'x4' LAY-IN TROFFER	CEILING	LITHONIA	20TB233A12101/46EB	2-F32T8/TL35	58	SEE NOTE 1
C	10	2'x2' LAY-IN TROFFER	CEILING	LITHONIA	20TB417A12101/46EB	4-F17T8/TL35	63	SEE NOTE 1
D	34	INCANDESCENT PENDANT	SEE NOTE 2	SEAGULL	X8519-150C	1-80W A19	80	SEE NOTES 1 AND 3.
DI	5	INCANDESCENT PENDANT	SEE NOTE 2	SEAGULL	X8519-218E	1-40W A19	40	SEE NOTES 1 AND 3.
EL	3	COMBO EXT./EMERGENCY LIGHT	CEILING	LITHONIA	LH0MSWR120/277HD	INCLUDED	N/A	HIGH OUTPUT BATTERY FOR REMOTE HEAD
EX	1	EXISTING FIXTURE TO REMAIN	CEILING	EXISTING	EXISTING	EXISTING	EXISTING	
L	4	EMERGENCY LIGHT	8'-0"	LITHONIA	RELM2-H-120/277	INCLUDED	N/A	
LR	3	REMOTE EMERGENCY HEAD		LITHONIA	ELA-NK-H0606	INCLUDED	N/A	POWERED FROM EXT LIGHTS

NOTES:
 1. ALL LAMPS OVER TABLES AND IN MEAL PREPARATION AREAS SHALL HAVE PROTECTIVE SHATTERPROOF COATING.
 2. VERIFY MOUNTING HEIGHT WITH OWNER.
 3. D & DI FIXTURES SHALL BE PAINTED EITHER RED OR WHITE INSIDE AND OUT. COLOR AS INDICATED BY LETTER BESIDE FIXTURE. R = RED; W = WHITE.



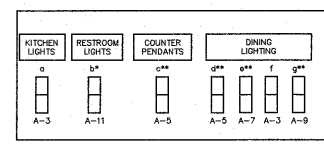
LIGHTING PLAN
 SCALE: 1/4" = 1'-0"

GENERAL NOTES

- SEE SHEET E1 FOR ALL GENERAL NOTES.
- SEE SHEET A2 FOR CEILING FINISH SCHEDULE.

CONSTRUCTION NOTES

- ALL EMERGENCY AND EXIT LIGHTS SHALL BE CONNECTED TO LOCAL LIGHTING CIRCUIT AHEAD OF ANY SWITCHING PER NEC 700.12(E).
- SWITCH BANK LOCATION. SEE DETAIL THIS SHEET.
- E.C. SHALL LOCATE JUNCTION BOX FOR HOOD LIGHTS ABOVE CEILING.
- E.C. SHALL PROVIDE A TIMELOCK FOR CONTROL OF SIGN LIGHTING. COORDINATE EXACT LOCATION OF JUNCTION BOX(ES) FOR SIGN LIGHTING WITH SIGN CONTRACTOR PRIOR TO INSTALLATION.
- REFRIGERATOR COMPRESSOR (R.C.) SHALL BE RESPONSIBLE FOR ALL POWER, AND CONTROL WIRING BETWEEN COMPRESSOR AND EVAPORATORS AND COOLER LIGHT SWITCHES INTEGRAL WITH EQUIPMENT.
- INDICATED FIXTURES SHALL BE WIRED AHEAD OF SWITCH FOR SECURITY NIGHT LIGHT (NL) TO REMAIN ENERGIZED 24 HOURS A DAY AND SHALL HAVE AN EMERGENCY BALLAST CAPABLE OF ILLUMINATING AT LEAST TWO LAMPS FOR A MINIMUM OF 90 MINUTES.
- RESTROOM EXHAUST FAN SHALL TURN ON & OFF WITH THE RESTROOM LIGHTS.
- NUMBER INDICATES CIRCUIT IN PANEL "A" OR "B"; LOWER CASE LETTER INDICATES SWITCH IN SWITCH BANK. IF NO LOWER CASE LETTER IS PRESENT, LIGHT IS CONTROLLED BY A LOCAL SWITCH.
- E.C. SHALL PROVIDE JUNCTION BOX ABOVE CEILING AT THE FOUR LOCATIONS SHOWN FOR SECURITY CAMERAS. PROVIDE A 1/2" CONDUIT WITH PULL WIRE FROM EACH LOCATION TO A 4-GANG JUNCTION BOX IN MANAGER'S OFFICE.
- EXISTING EXTERIOR ENTRY LIGHTING TO REMAIN. SEE PANEL SCHEDULES.
- E.C. SHALL REMOVE EXISTING EXTERIOR CANOPY LIGHTS AS REQUIRED FOR BUILDING ADDITION. E.C. SHALL RE-CONNECT EXISTING CANOPY LIGHTS TO REMAIN TO EXISTING CIRCUIT FED THRU NEW LIGHT SWITCH AT BACK DOOR.



NOTES:
 * RESTROOM EXHAUST FAN SHALL TURN ON & OFF WITH THE RESTROOM LIGHT. SEE CONSTRUCTION NOTE 7.
 ** DIMMER SWITCH

SWITCH BANK ELEVATION
 NOT TO SCALE



Lehman Keller Fire Thornton Associates
 ENGINEERS
 2801 MERIDIAN PARKWAY
 WILMINGTON, NORTH CAROLINA 27405
 TEL: 704.762.1100
 FAX: 704.762.1101

ALL WORK SHALL BE IN ACCORDANCE WITH THE LATEST EDITIONS OF THE NATIONAL ELECTRICAL CODE (NEC) AND THE NATIONAL FIRE ALARM AND SIGNALING CODE (NFPA 72). ALL WORK SHALL BE SUBJECT TO INSPECTION AND APPROVAL BY THE LOCAL AUTHORITY HAVING JURISDICTION.

FIVE GUYS
 FAMOUS BURGERS AND FRIES
 Location: 778 SE MANARD ROAD
 CARY, NORTH CAROLINA
 Drawing: ELECTRICAL LIGHTING PLAN

FIVE GUYS
 FAMOUS BURGERS and FRIES

Revisions

PROJECT DATE
 6/26/06
 DRAWN BY
 RK
 CHECKED BY
 AC
 Sheet No.
E2