

SINGLE PIPE HEADWALLS

PIPE SIZE (in)	DEPTH (ft)	WING WALL THICKNESS (in)	HEADWALL DIMENSIONS (ft)																
			A	B	C	D	E	F	G	H	I	J	K	L	M	N	O	P	
12	2.0	12	4.00	4.00	4.00	4.00	4.00	4.00	4.00	4.00	4.00	4.00	4.00	4.00	4.00	4.00	4.00	4.00	4.00
15	2.5	15	4.50	4.50	4.50	4.50	4.50	4.50	4.50	4.50	4.50	4.50	4.50	4.50	4.50	4.50	4.50	4.50	4.50
18	3.0	18	5.00	5.00	5.00	5.00	5.00	5.00	5.00	5.00	5.00	5.00	5.00	5.00	5.00	5.00	5.00	5.00	5.00
24	4.0	24	6.00	6.00	6.00	6.00	6.00	6.00	6.00	6.00	6.00	6.00	6.00	6.00	6.00	6.00	6.00	6.00	6.00
30	5.0	30	7.00	7.00	7.00	7.00	7.00	7.00	7.00	7.00	7.00	7.00	7.00	7.00	7.00	7.00	7.00	7.00	7.00
36	6.0	36	8.00	8.00	8.00	8.00	8.00	8.00	8.00	8.00	8.00	8.00	8.00	8.00	8.00	8.00	8.00	8.00	8.00
42	7.0	42	9.00	9.00	9.00	9.00	9.00	9.00	9.00	9.00	9.00	9.00	9.00	9.00	9.00	9.00	9.00	9.00	9.00
48	8.0	48	10.00	10.00	10.00	10.00	10.00	10.00	10.00	10.00	10.00	10.00	10.00	10.00	10.00	10.00	10.00	10.00	10.00
54	9.0	54	11.00	11.00	11.00	11.00	11.00	11.00	11.00	11.00	11.00	11.00	11.00	11.00	11.00	11.00	11.00	11.00	11.00
60	10.0	60	12.00	12.00	12.00	12.00	12.00	12.00	12.00	12.00	12.00	12.00	12.00	12.00	12.00	12.00	12.00	12.00	12.00
66	11.0	66	13.00	13.00	13.00	13.00	13.00	13.00	13.00	13.00	13.00	13.00	13.00	13.00	13.00	13.00	13.00	13.00	13.00
72	12.0	72	14.00	14.00	14.00	14.00	14.00	14.00	14.00	14.00	14.00	14.00	14.00	14.00	14.00	14.00	14.00	14.00	14.00
78	13.0	78	15.00	15.00	15.00	15.00	15.00	15.00	15.00	15.00	15.00	15.00	15.00	15.00	15.00	15.00	15.00	15.00	15.00
84	14.0	84	16.00	16.00	16.00	16.00	16.00	16.00	16.00	16.00	16.00	16.00	16.00	16.00	16.00	16.00	16.00	16.00	16.00
90	15.0	90	17.00	17.00	17.00	17.00	17.00	17.00	17.00	17.00	17.00	17.00	17.00	17.00	17.00	17.00	17.00	17.00	17.00
96	16.0	96	18.00	18.00	18.00	18.00	18.00	18.00	18.00	18.00	18.00	18.00	18.00	18.00	18.00	18.00	18.00	18.00	18.00
102	17.0	102	19.00	19.00	19.00	19.00	19.00	19.00	19.00	19.00	19.00	19.00	19.00	19.00	19.00	19.00	19.00	19.00	19.00
108	18.0	108	20.00	20.00	20.00	20.00	20.00	20.00	20.00	20.00	20.00	20.00	20.00	20.00	20.00	20.00	20.00	20.00	20.00
114	19.0	114	21.00	21.00	21.00	21.00	21.00	21.00	21.00	21.00	21.00	21.00	21.00	21.00	21.00	21.00	21.00	21.00	21.00
120	20.0	120	22.00	22.00	22.00	22.00	22.00	22.00	22.00	22.00	22.00	22.00	22.00	22.00	22.00	22.00	22.00	22.00	22.00

REVISIONS

DATE: _____ DESCRIPTION: _____

5B
2

STD. NO. 8.11

SINGLE PIPE HEADWALL

PIPE SIZE (in)	DEPTH (ft)	BACK FACE		FRONT FACE	
		HORIZONTAL	VERTICAL	HORIZONTAL	VERTICAL
12	2.0	4.00	4.00	4.00	4.00
15	2.5	4.50	4.50	4.50	4.50
18	3.0	5.00	5.00	5.00	5.00
24	4.0	6.00	6.00	6.00	6.00
30	5.0	7.00	7.00	7.00	7.00
36	6.0	8.00	8.00	8.00	8.00
42	7.0	9.00	9.00	9.00	9.00
48	8.0	10.00	10.00	10.00	10.00
54	9.0	11.00	11.00	11.00	11.00
60	10.0	12.00	12.00	12.00	12.00
66	11.0	13.00	13.00	13.00	13.00
72	12.0	14.00	14.00	14.00	14.00
78	13.0	15.00	15.00	15.00	15.00
84	14.0	16.00	16.00	16.00	16.00
90	15.0	17.00	17.00	17.00	17.00
96	16.0	18.00	18.00	18.00	18.00
102	17.0	19.00	19.00	19.00	19.00
108	18.0	20.00	20.00	20.00	20.00
114	19.0	21.00	21.00	21.00	21.00
120	20.0	22.00	22.00	22.00	22.00

DOUBLE PIPE HEADWALL

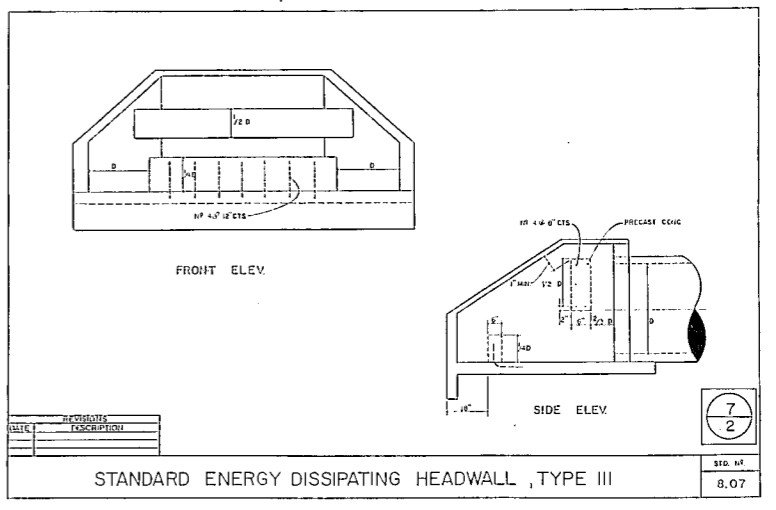
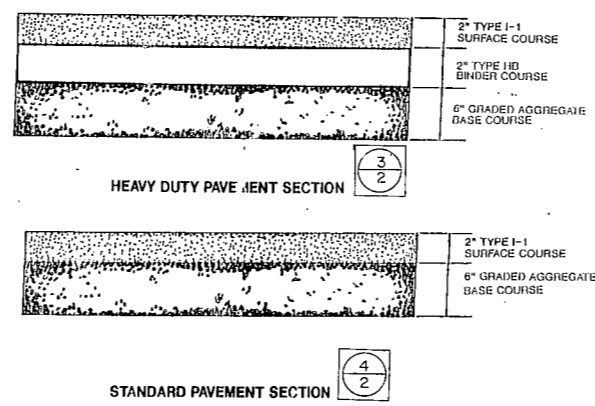
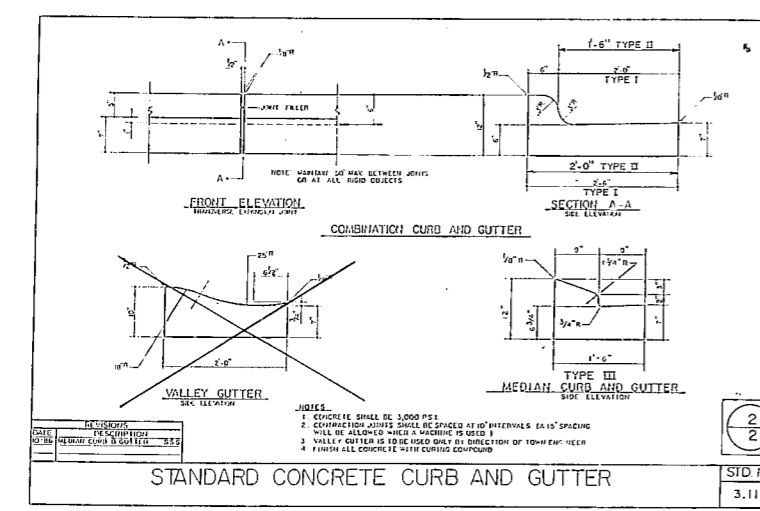
PIPE SIZE (in)	DEPTH (ft)	BACK FACE		FRONT FACE	
		HORIZONTAL	VERTICAL	HORIZONTAL	VERTICAL
12	2.0	4.00	4.00	4.00	4.00
15	2.5	4.50	4.50	4.50	4.50
18	3.0	5.00	5.00	5.00	5.00
24	4.0	6.00	6.00	6.00	6.00
30	5.0	7.00	7.00	7.00	7.00
36	6.0	8.00	8.00	8.00	8.00
42	7.0	9.00	9.00	9.00	9.00
48	8.0	10.00	10.00	10.00	10.00
54	9.0	11.00	11.00	11.00	11.00
60	10.0	12.00	12.00	12.00	12.00
66	11.0	13.00	13.00	13.00	13.00
72	12.0	14.00	14.00	14.00	14.00
78	13.0	15.00	15.00	15.00	15.00
84	14.0	16.00	16.00	16.00	16.00
90	15.0	17.00	17.00	17.00	17.00
96	16.0	18.00	18.00	18.00	18.00
102	17.0	19.00	19.00	19.00	19.00
108	18.0	20.00	20.00	20.00	20.00
114	19.0	21.00	21.00	21.00	21.00
120	20.0	22.00	22.00	22.00	22.00

REVISIONS

DATE: _____ DESCRIPTION: _____

5C
2

STD. NO. 8.11



DATE	DESCRIPTION

DESIGNED: _____

DRAWN: _____

CHECKED: _____

APPROVED: _____

LOWE ENGINEERS, INC.

PARK 'N FLY

RALEIGH-DURHAM AIRPORT
TOWN OF CARY, NORTH CAROLINA

MISCELLANEOUS DETAILS

PROJ. NO.: 8875

DATE: MAY 1990

SCALE: N.T.S.

DWG. NO.: 7