

No.	REVISION	BY
1.	PER TOWN COMMENTS	
	5/24/99	JB
2.	PER TOWN APPROVAL	
	5/14/99	JB



CARY PROJECT #
99-SP-106

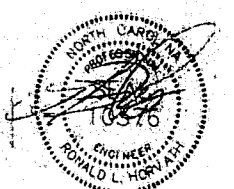
PLANNERS

RL Horvath Associates, Inc.

GATEWAY CENTRE
3300-3500 GATEWAY CENTRE BOULEVARD
CARY, NORTH CAROLINA

ENGINEERS

SUBDIVISION
PLAN

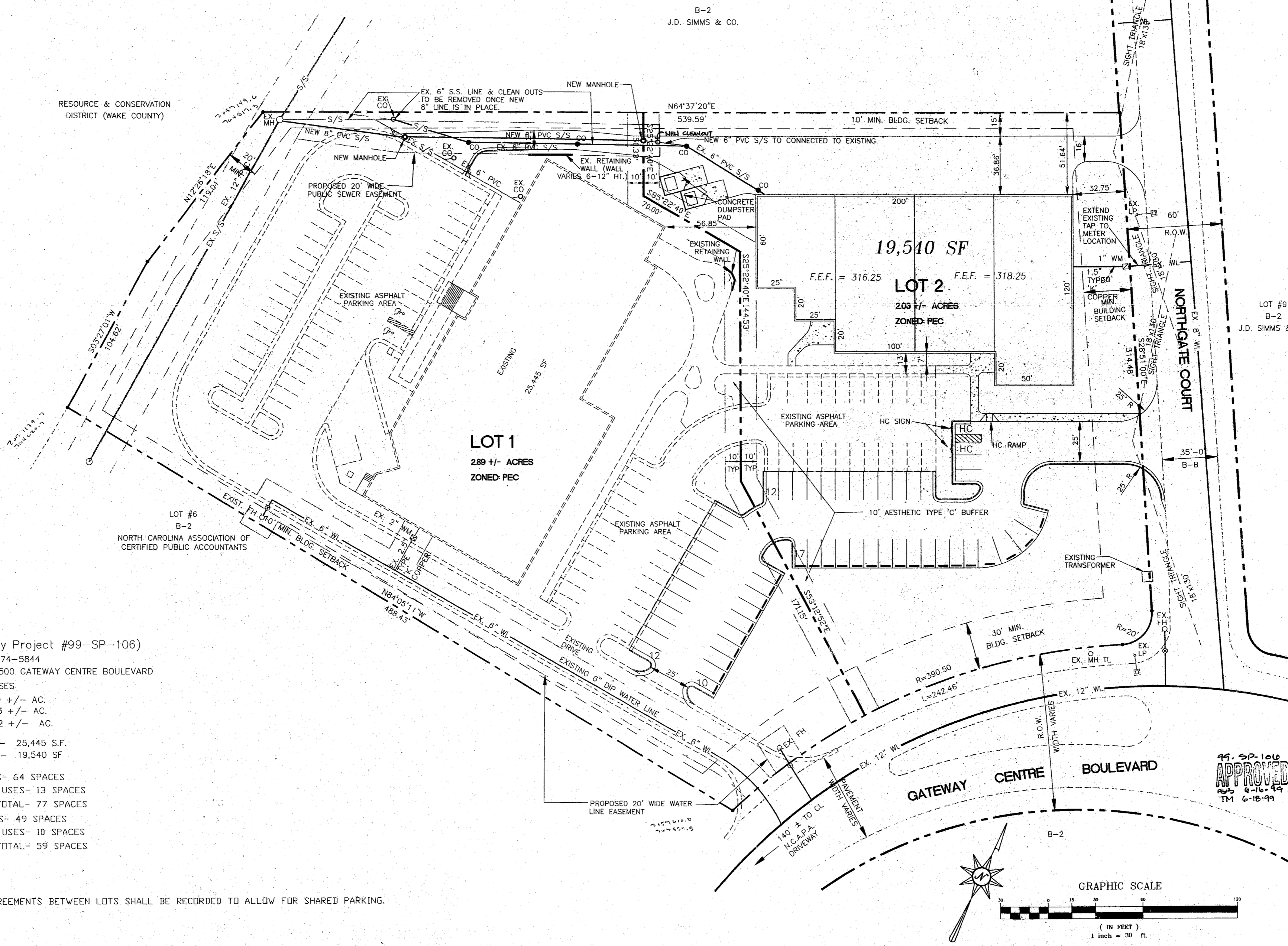


6-14-99

DRAWN
TJF
CHECKED
TJF
DATE
05/10/99
SCALE
1" = 30'
JOB NO.
9673
SHEET NO.

P001

OF SHEETS



SITE SUMMARY (Cary Project #99-SP-106)
 PIN NUMBERS: 0756.04-74-5844
 STREET ADDRESS: 3300-3500 GATEWAY CENTRE BOULEVARD
 ZONING: PEC, CLASS 7 USES
 SITE AREA: LOT 1- 2.89 +/- AC.
 LOT 2- 2.03 +/- AC.
 TOTAL- 4.92 +/- AC.

EX. BLDG. SQ. FT.: LOT 1- 25,445 S.F.
 LOT 2- 19,540 SF
 REQUIRED PARKING:
 LOT 1- 75% OFFICE USES- 64 SPACES
 25% WAREHOUSE USES- 13 SPACES
 TOTAL- 77 SPACES
 LOT 2- 75% OFFICE USES- 49 SPACES
 25% WAREHOUSE USES- 10 SPACES
 TOTAL- 59 SPACES
 PARKING PROVIDED:
 LOT 1- *88 SPACES
 LOT 2- *57 SPACES

*NOTE: CROSS ACCESS AGREEMENTS BETWEEN LOTS SHALL BE RECORDED TO ALLOW FOR SHARED PARKING.

99-SP-106
APPROVED
R.L. HORVATH
6-18-99

FILE NAME: 9673P001