

BUILDING TYPE II CBBC	
FIRST FLOOR	
LIVING	9,140 SQ. FT.
BREEZEWAYS	1,438 SQ. FT.
SUBTOTAL	10,578 SQ. FT.
SECOND FLOOR	
LIVING	9,140 SQ. FT.
BREEZEWAYS	1,54 SQ. FT.
SUBTOTAL	10,294 SQ. FT.
THIRD FLOOR	
LIVING	1,588 SQ. FT.
BREEZEWAYS	154 SQ. FT.
SUBTOTAL	2,142 SQ. FT.
BUILDING TOTAL	23,614 SQ. FT.

SELECTIVE CONDOC NOTES

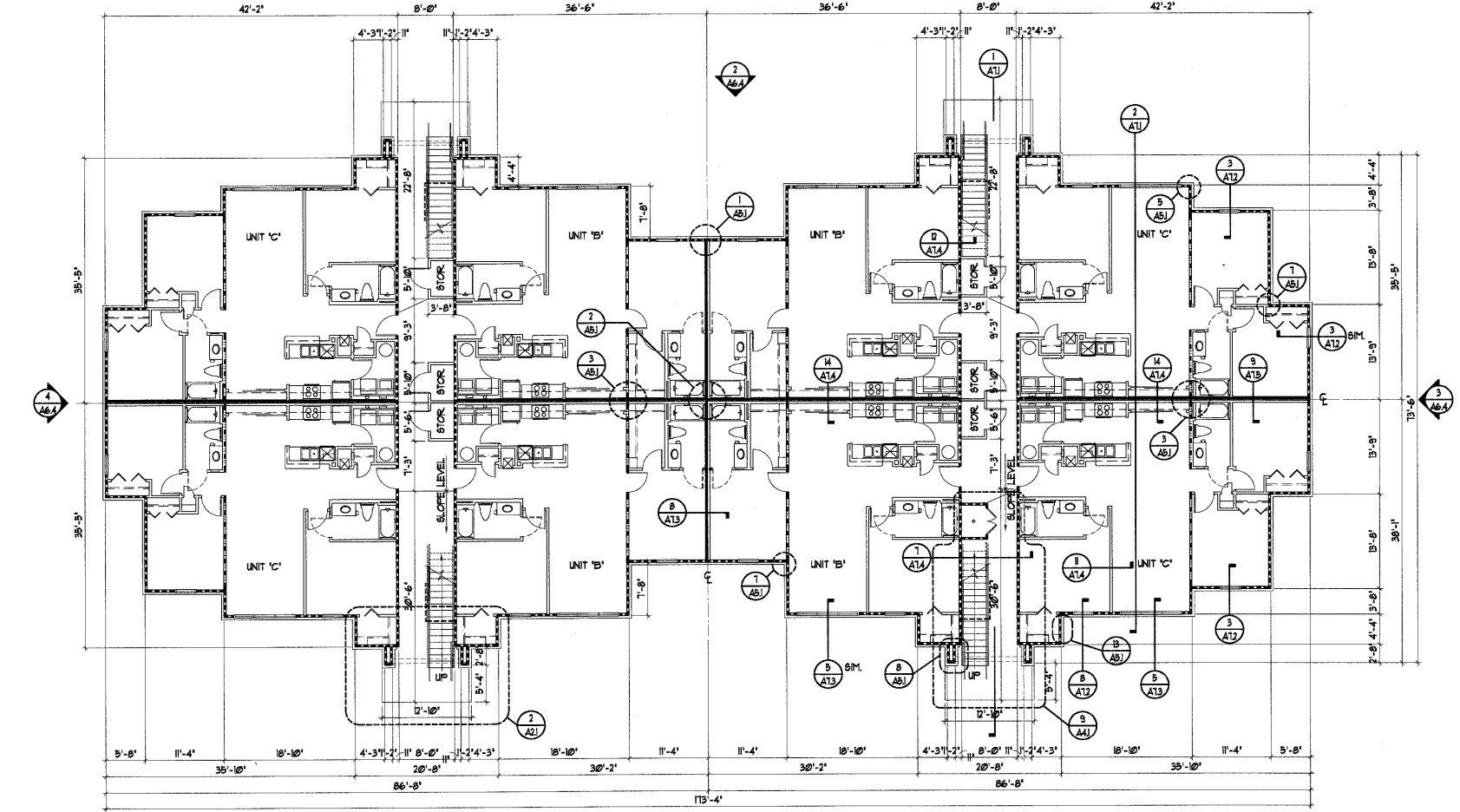
GENERAL NOTES

- CONFIRM ALL FINISH GRADE AND FINISH FLOOR ELEVATIONS WITH APPROVED SITE ENGINEERING.
- CONFIRM PORCH AND STEP REQUIREMENTS WITH APPROVED CIVIL ENGINEERING. PROVIDE CONTINUOUS VENTED SOFFIT AT ALL OVERHANGS.
- INTERIOR AND EXTERIOR LOAD BEARING PARTITIONS AT GROUND FLOOR UNITS TO BE 3/4" STUDS AT 16" O.C. IN 3 STORY PORTIONS OF BUILDING PER CODE.
- REFER TO SITE WORK DRAWINGS FOR SIDEWALK LOCATIONS.
- VERIFY LOCATION OF FIRE RISER EQUIPMENT ACCESS PANEL WITH FIRE PROTECTION SYSTEMS ENGINEERS AND PLUMBING.
- PROVIDE LOCATION AND INSPECTOR TEST VALVE ACCESS PANEL AS REQUIRED.
- SEE STRUCTURAL DRAWINGS FOR SLOPED FLOOR SLAB ELEVATIONS, TYPICAL ALL 1ST FLOOR BREEZEWAYS.
- PROVIDE 22"x36" ATTIC ACCESS AT TOP FLOOR UNITS ONLY.

WALL LEGEND

- 3-1/2" STUDS W/ 1 LAYER OF 5/8" TYPE 'X' GYP. BOARD ON EACH SIDE OF TENANT SEPARATION WALL. FILL WITH 3-1/2" MIN. BATT INSULATION BOTH SIDES.
- EXTERIOR WALL W/ 1 LAYER OF 5/8" TYPE 'X' GYP. BOARD ON INTERIOR FACE.
- INTERIOR BEARING WALL W/ 1 LAYER OF 5/8" TYPE 'X' GYP. BOARD ON EACH SIDE OF STUD WALL.
- 3-1/2" STUD WITH 1/2" GYPSUM BOARD BOTH SIDES AT INTERIOR WALLS.
- ATTIC DRAFTSTOPPING, 1 LAYER OF 1/2" GAB OR OSB ON ONE SIDE OF ROOF TRUSS.

01-56-012.
APPROVED
 TOWN OF CARY
 Approved By DRG Date 5-22-02
 Planning RP Date 6-2-02
 Engineering TS Date 6-12-02



1 BUILDING TYPE II - FIRST FLOOR PLAN
 SCALE: 1/8" = 1'-0"

REVISIONS	PERMIT SET	BY
3-26-02		

SLOCUM PLATTS
 ARCHITECTS DESIGN STUDIO, P.A.
 RANDALL J. SLOCUM ARCHITECT
 13350 WILLIAMI P. PLATTS AR 13262
 SUITE 300
 WINTER PARK, FLORIDA 32789
 TEL. (407)845-3019 - FAX (407)845-2771

RANDALL J. SLOCUM
 NORTH CAROLINA

BLDG. TYPE II - 1ST FLOOR PLAN - CBBC (BLDG 1 + 2)
THE GROVES AT CARY PARK
 APARTMENTS
 CARY
 NORTH CAROLINA

DRAWN	RP/IG
CHECKED	WFF
DATE	3-26-02
SCALE	AS NOTED
JOB NO.	01-045
SHEET	

A2.13