

BUILDING TYPE II CBBC		
FIRST FLOOR		
LIVING	9,140	SQ. FT.
BREEZEWAYS	1,438	SQ. FT.
SUBTOTAL	10,578	SQ. FT.
SECOND FLOOR		
LIVING	9,140	SQ. FT.
BREEZEWAYS	1,544	SQ. FT.
SUBTOTAL	10,684	SQ. FT.
THIRD FLOOR		
LIVING	7,588	SQ. FT.
BREEZEWAYS	1,854	SQ. FT.
SUBTOTAL	9,442	SQ. FT.
BUILDING TOTAL	29,614	SQ. FT.

SELECTIVE CONDOC NOTES

1. CONFIRM ALL FINISH GRADE AND FINISH FLOOR ELEVATIONS WITH APPROVED SITE ENGINEERING.

2. CONFIRM PORCH AND STEP REQUIREMENTS WITH APPROVED CIVIL ENGINEERING. PROVIDE CONTINUOUS VENTED SOFFIT AT ALL OVERHANGS.

3. INTERIOR AND EXTERIOR LOAD BEARING PARTITIONS AT GROUND FLOOR UNITS TO BE 3x4 STUDS AT 16" O.C. IN 3 STORY PORTIONS OF BUILDING PER CODE.

4. REFER TO SITE WORK DRAWINGS FOR SIDEWALK LOCATIONS.

5. VERIFY LOCATION OF FIRE RISER EQUIPMENT ACCESS PANEL WITH FIRE PROTECTION SYSTEMS ENGINEERS AND PLUMBING.

6. PROVIDE LOCATION AND INSPECTOR TEST VALVE ACCESS PANEL AS REQUIRED.

7. SEE STRUCTURAL DRAWINGS FOR SLOPED FLOOR SLAB ELEVATIONS, TYPICAL ALL 1ST FLOOR BREEZEWAYS.

8. PROVIDE 22"x36" ATTIC ACCESS AT TOP FLOOR UNITS ONLY.

GENERAL NOTES

1. CONFIRM ALL FINISH GRADE AND FINISH FLOOR ELEVATIONS WITH APPROVED SITE ENGINEERING.

2. CONFIRM PORCH AND STEP REQUIREMENTS WITH APPROVED CIVIL ENGINEERING. PROVIDE CONTINUOUS VENTED SOFFIT AT ALL OVERHANGS.

3. INTERIOR AND EXTERIOR LOAD BEARING PARTITIONS AT GROUND FLOOR UNITS TO BE 3x4 STUDS AT 16" O.C. IN 3 STORY PORTIONS OF BUILDING PER CODE.

4. REFER TO SITE WORK DRAWINGS FOR SIDEWALK LOCATIONS.

5. VERIFY LOCATION OF FIRE RISER EQUIPMENT ACCESS PANEL WITH FIRE PROTECTION SYSTEMS ENGINEERS AND PLUMBING.

6. PROVIDE LOCATION AND INSPECTOR TEST VALVE ACCESS PANEL AS REQUIRED.

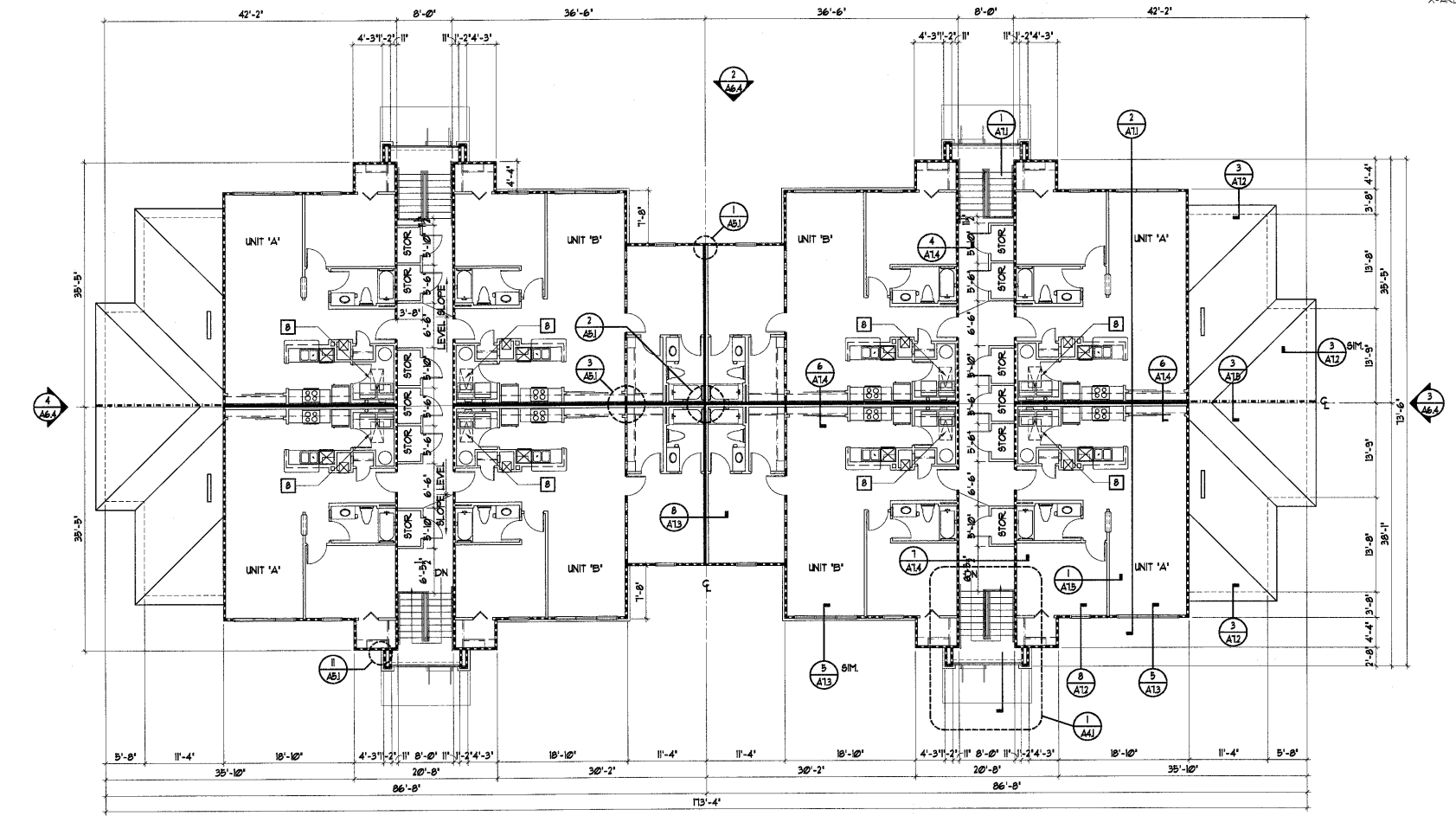
7. SEE STRUCTURAL DRAWINGS FOR SLOPED FLOOR SLAB ELEVATIONS, TYPICAL ALL 1ST FLOOR BREEZEWAYS.

8. PROVIDE 22"x36" ATTIC ACCESS AT TOP FLOOR UNITS ONLY.

WALL LEGEND

- 3-1/2" STUDS W/ 1 LAYER OF 5/8" TYPE "X" GYP. BOARD ON EACH SIDE OF TENANT SEPARATION WALL. FILL WITH 3-1/2" MIN. BATT INSULATION BOTH SIDES.
- EXTERIOR WALL W/ 1 LAYER OF 5/8" TYPE "X" GYP. BOARD ON INTERIOR FACE.
- INTERIOR BEARING WALL W/ 1 LAYER OF 5/8" TYPE "X" GYP. BOARD ON EACH SIDE OF STUD WALL.
- 3-1/2" STUD WITH 1/2" GYPSUM BOARD BOTH SIDES AT INTERIOR WALLS.
- ATTIC DRAFTSTOPPING, 1 LAYER OF 1/2" GUS OR CBS ON ONE SIDE OF ROOF TRUSS.

01-50-012
APPROVED
 TOWN OF CARY
 Approved By: DLG Date: 5.22.02
 Planning: DLG Date: 4.19.02
 Engineering: DLG Date: 6.12.02



BUILDING TYPE II - THIRD FLOOR PLAN
 SCALE: 1/8" = 1'-0"

REVISIONS	BY
PERMIT SET	
3-26-02	

SLOCUM • PLATTS
ARCHITECTS DESIGN STUDIO, P.A.
 RANDALL J. SLOCUM, ARCHITECT
 13350 WILLIAM P. PLATTS, JR. BLVD.
 SUITE 200
 WINTER PARK, FLORIDA 32789
 TEL. (407)645-3019 FAX (407)645-2771

RANDALL J. SLOCUM
 ARCHITECT
 NORTH CAROLINA

BLDG. TYPE II - 3RD FLOOR PLAN - ABBA (BLDG. 1 + 2)
THE GROVES AT CARY PARK
APARTMENTS
 CARY
 NORTH CAROLINA

DRAWN	
RMG	
CHECKED	WHP
DATE	3-26-02
SCALE	AS NOTED
JOB NO.	01-045
SHEET	

A2.15