

2 ENLARGED FRONT ENTRY PLAN
SCALE: 1/4" = 1'-0"
X-BLDI-3

BUILDING TYPE I DBBD	
FIRST FLOOR	
LIVING	10,144 SQ. FT.
BREEZEWAYS	1,306 SQ. FT.
SUBTOTAL	11,450 SQ. FT.
SECOND FLOOR	
LIVING	10,144 SQ. FT.
BREEZEWAYS	1,054 SQ. FT.
SUBTOTAL	11,198 SQ. FT.
THIRD FLOOR	
LIVING	15,008 SQ. FT.
BREEZEWAYS	1,054 SQ. FT.
SUBTOTAL	16,062 SQ. FT.
BUILDING TOTAL	31,292 SQ. FT.

X-ARFA

SELECTIVE CONDOC NOTES

REVISIONS	BY
PERMIT SET	
3-26-02	

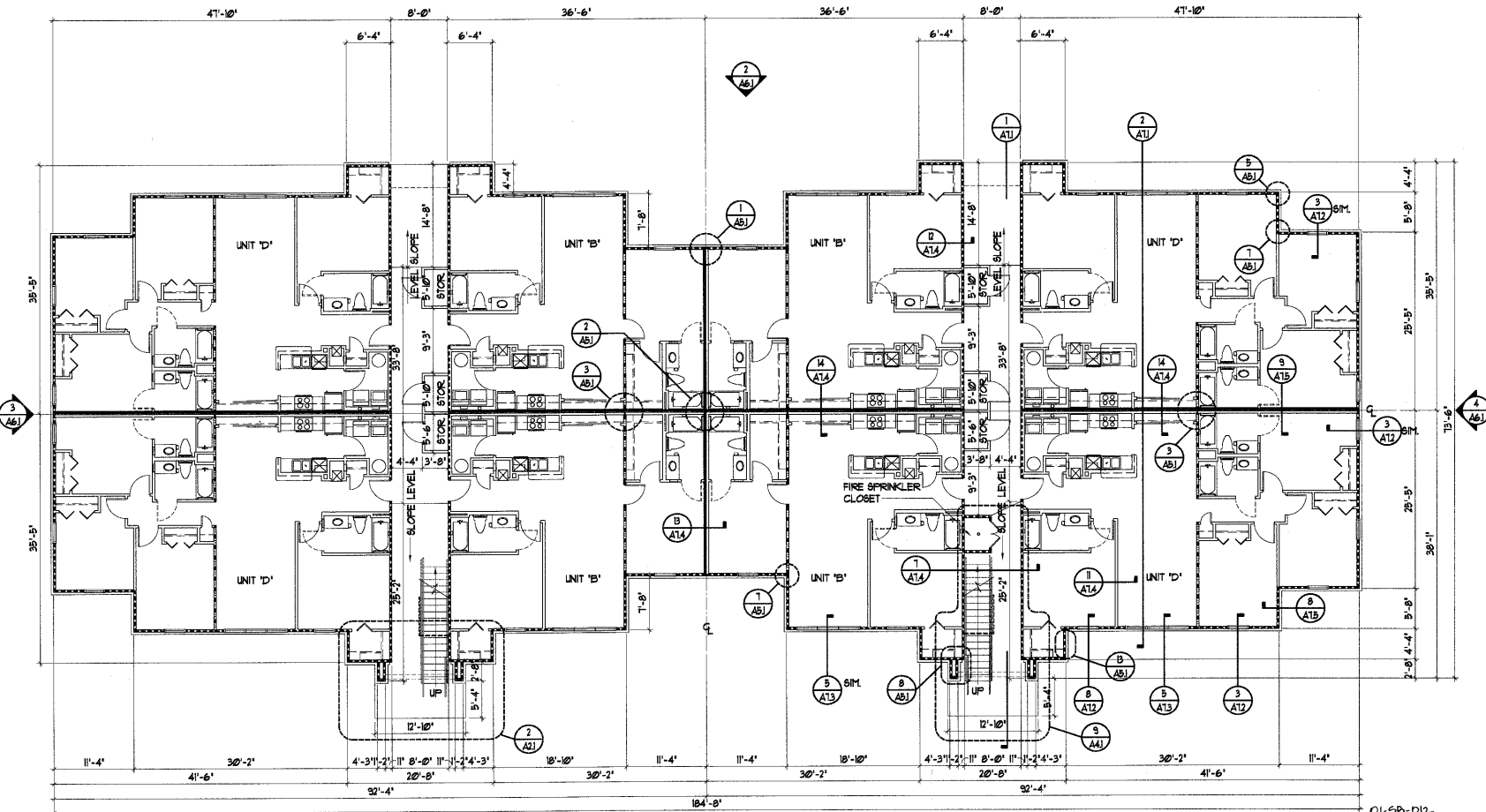
GENERAL NOTES

- CONFIRM ALL FINISH GRADE AND FINISH FLOOR ELEVATIONS WITH APPROVED SITE ENGINEERING.
- CONFIRM PORCH AND STEP REQUIREMENTS WITH APPROVED CIVIL ENGINEERING. PROVIDE CONTINUOUS VENTED SOFFIT AT ALL OVERHANGS.
- INTERIOR AND EXTERIOR LOAD BEARING PARTITIONS AT GROUND FLOOR UNITS TO BE 3x4 STUDS AT 16" O.C. IN 3 STORY PORTIONS OF BUILDING PER CODE.
- REFER TO SITE WORK DRAWINGS FOR SIDEWALK LOCATIONS.
- VERIFY LOCATION OF FIRE RISER EQUIPMENT ACCESS PANEL WITH FIRE PROTECTION SYSTEMS ENGINEERS AND PLUMBERS.
- PROVIDE LOCATION AND INSPECTOR TEST VALVE ACCESS PANEL AS REQUIRED.
- SEE STRUCTURAL DRAWINGS FOR SLOPED FLOOR SLAB ELEVATIONS, TYPICAL ALL 1ST FLOOR BREEZEWAYS.
- PROVIDE 22"x36" ATTIC ACCESS AT TOP FLOOR UNITS ONLY.

X-NOTE#2

WALL LEGEND	
	3-1/2" STUDS W/ 1 LAYER OF 5/8" TYPE 'X' GYP. BOARD ON EACH SIDE OF TENANT SEPARATION WALL. FILL WITH 3-1/2" MIN. BATT INSULATION BOTH SIDES.
	EXTERIOR WALL W/ 1 LAYER OF 5/8" TYPE 'X' GYP. BOARD ON INTERIOR FACE.
	INTERIOR BEARING WALL W/ 1 LAYER OF 5/8" TYPE 'X' GYP. BOARD ON EACH SIDE OF STUD WALL.
	3-1/2" STUD WITH 1/2" GYPSUM BOARD BOTH SIDES AT INTERIOR WALLS.
	ATTIC DRAFTSTOPPING, 1 LAYER OF 1/2" GAB OR OSB ON ONE SIDE OF ROOF TRUSS.

X-UL-EG



01-60-012 APPROVED
TOWN OF CARY

Approved By: DR.C Date: 5-22-02
 Planning: 6-2-2 Date: 6-2-02
 Engineering: IS Date: 6-12-02

1 BUILDING TYPE I - FIRST FLOOR PLAN
SCALE: 1/8" = 1'-0"

REVISIONS	BY
PERMIT SET	
3-26-02	

SLOCUM • PLATTS
 ARCHITECTS DESIGN STUDIO, P.A.
 RANDALL J. SLOCUM, ARCH. 13350 WILLIAM P. PLATTS, ARCH. 13262
 10000 WINTER PARK DRIVE, SUITE 100
 WINTER PARK, FLORIDA 32789
 TEL. (407) 645-3019 FAX (407) 645-2771

RANDALL J. SLOCUM
 ARCHITECT
 NORTH CAROLINA

BLDG. TYPE I - 1ST FLOOR PLAN - DBBD (BLDG. 4 + 5)
 THE GROVES AT CARY PARK
 APARTMENTS
 CARY
 NORTH CAROLINA

DRAWN: RMG
 CHECKED: WHP
 DATE: 3-26-02
 SCALE: AS NOTED
 JOB NO: 01-045
 SHEET

A21