

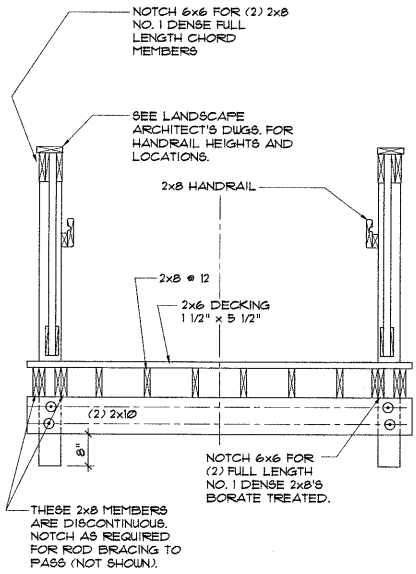
NOTES:

THE TIMBER PEDESTRIAN BRIDGE INCLUDES A RAILING/ TRUSS SYSTEM WHICH WILL REQUIRE THAT FULL LENGTH (APPROX. 30 FEET) CONTINUOUS CHORD PIECES BE PURCHASED.

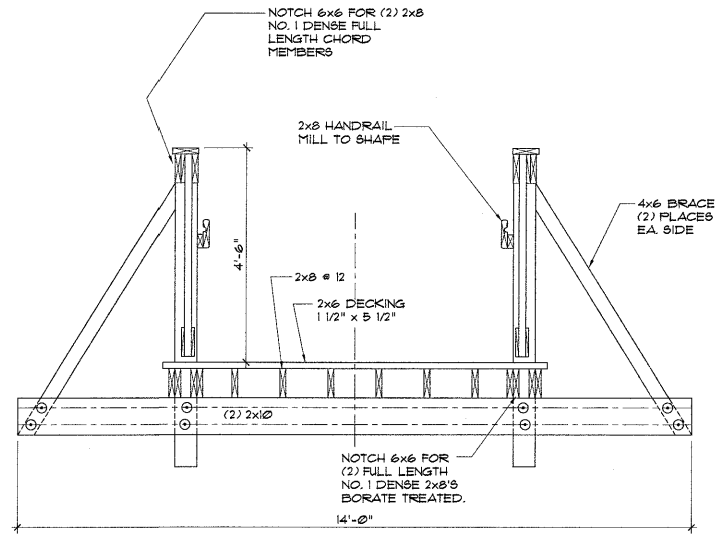
NO SPLICES WILL BE ALLOWED IN THESE MEMBERS.

THE END POINTS WHICH BEAR ON THE RETAINING WALL SHALL BE DESIGNED TO SUPPORT 10 KIPS PER TRUSS.

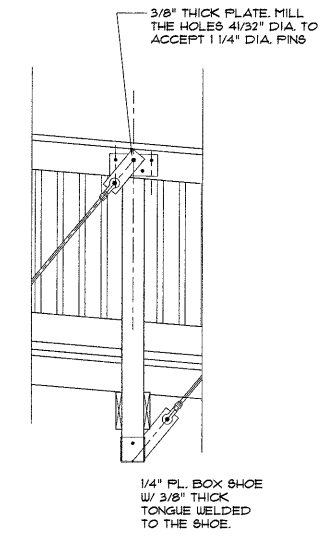
1 PEDESTRIAN BRIDGE
SCALE 1/4" = 1'-0"



2 SECT. @ BRIDGE
SCALE 3/4" = 1'-0"



3 BRIDGE SECTION
SCALE 3/4" = 1'-0"



4 BRIDGE SECTION
SCALE 3/4" = 1'-0"

01-56-012
APPROVED
TOWN OF CARY

Approved by DDC Date 5-22-02
Planning 8/2 Date 1-13-02
Engineering ID Date 12-12-02

NOTE:
THE TIMBER PEDESTRIAN BRIDGE AND WALKWAY IS AN ALTERNATE TO THE PRE-FABRICATED BRIDGE SHOWN ON SHEETS S1 AND S2.

NO.	REVISION	DATE	BY

Designer DCF Scale As Noted
Drawn By CG, DCF Date JUNE 4, 2002
Checked By DCF Job No. 02021

THE GROVE AT CARY PARK

7 FOOT WIDE TIMBER PEDESTRIAN BRIDGE (ALTERNATE)
BRIDGE ELEVATION AND RAILING DETAILS.

WITHERS & RAVENEL
ENGINEERS | PLANNERS | SURVEYORS
111 MacKenzie Drive Cary, North Carolina 27511 Tel: 919-467-3360 Fax: 919-467-6008 www.wITHERSRAVENEL.com