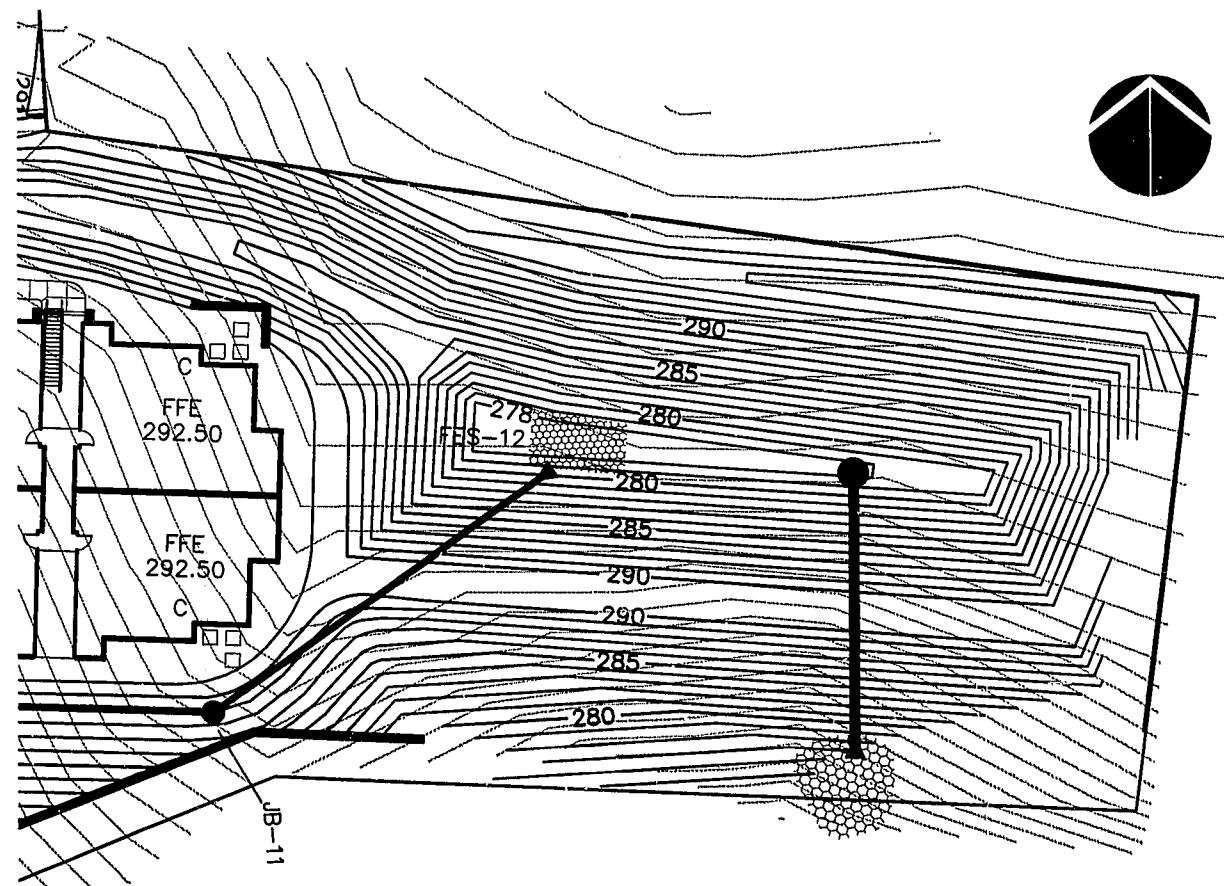
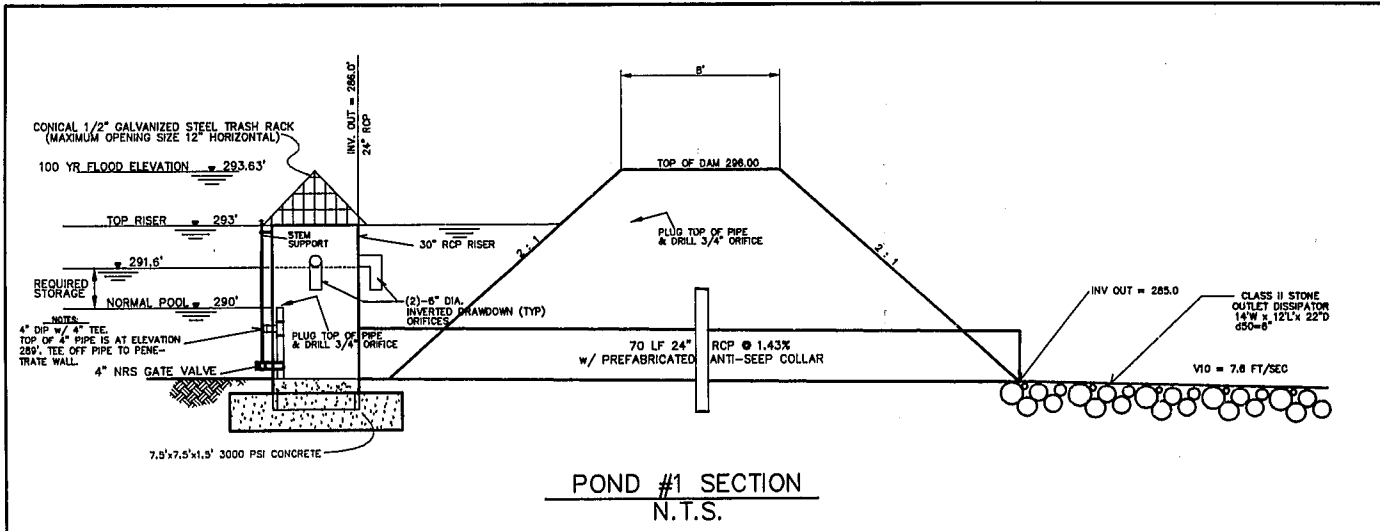


POND 1

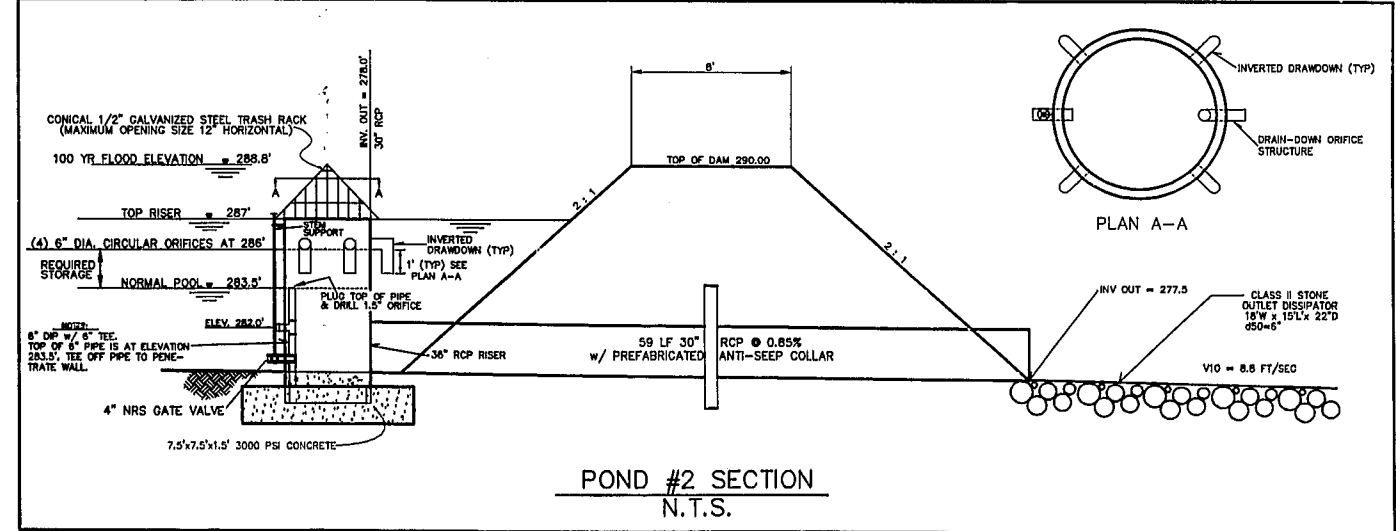
NOTE:  
THE SLOPES FOR BOTH PONDS SHALL BE STABILIZED WITH NORTH AMERICAN GREEN C125 LONG-TERM EROSION CONTROL LINING, AND SEEDED WITH WEEPING LOVE GRASS, RED FESCUE, OR OTHER TOWN OF CARY APPROVED LOW MAINTENANCE VEGETATION.



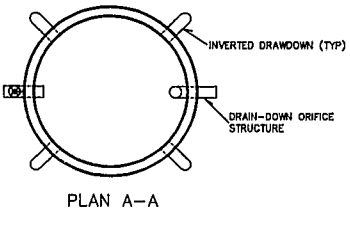
POND 2



POND #1 SECTION  
N.T.S.



POND #2 SECTION  
N.T.S.



"ALL CONSTRUCTION SHALL BE IN ACCORDANCE WITH CURRENT TOWN OF CARY STANDARD SPECIFICATIONS AND DETAILS

01-50-012  
APPROVED  
TOWN OF CARY  
Approved By DRG Date 5-22-02  
Planning BDH Date 6-13-02  
Engineering IS Date 6-12-02



No.	Revision	Date	By	Designer	Scale
1.	PER 100 REVIEW	4/18/02	BDH	BDH	1"=20'
2.	PER 100 REVIEW	6/3/02	BDH	BDH	
Checked By		Date		Job No.	
BDH		01MARCH02		201238.00	

THE GROVE AT CARY PARK

POND DETAILS

**WITHERS & RAVENEL**  
ENGINEERS | PLANNERS | SURVEYORS  
111 MacKenan Drive Cary, North Carolina 27511 tel: 919-469-3340 fax: 919-467-6008 www.wITHERSANDRAVENEL.COM