

BUILDING TYPE I DBBD		
FIRST FLOOR		
LIVING	10,144	SQ. FT.
BREEZEWAYS	1,308	SQ. FT.
SUBTOTAL	11,452	SQ. FT.
SECOND FLOOR		
LIVING	10,144	SQ. FT.
BREEZEWAYS	1,054	SQ. FT.
SUBTOTAL	11,198	SQ. FT.
THIRD FLOOR		
LIVING	7,500	SQ. FT.
BREEZEWAYS	1,054	SQ. FT.
SUBTOTAL	8,554	SQ. FT.
BUILDING TOTAL	31,202	SQ. FT.

SELECTIVE CONDOC NOTES

GENERAL NOTES

- CONFIRM ALL FINISH GRADE AND FINISH FLOOR ELEVATIONS WITH APPROVED SITE ENGINEERING.
- CONFIRM PORCH AND STEP REQUIREMENTS WITH APPROVED CIVIL ENGINEERING. PROVIDE CONTINUOUS VENTED SOFFIT AT ALL OVERHANGS.
- INTERIOR AND EXTERIOR LOAD BEARING PARTITIONS AT GROUND FLOOR UNITS TO BE 3x4 STUDS AT 16" O.C. IN 3 STORY PORTIONS OF BUILDING PER CODE.
- REFER TO SITE WORK DRAWINGS FOR SIDEWALK LOCATIONS.
- VERIFY LOCATION OF FIRE RISER EQUIPMENT ACCESS PANEL WITH FIRE PROTECTION SYSTEMS ENGINEERS AND PLUMBING.
- PROVIDE LOCATION AND INSPECTOR TEST VALVE ACCESS PANEL AS REQUIRED.
- SEE STRUCTURAL DRAWINGS FOR SLOPED FLOOR SLAB ELEVATIONS, TYPICAL ALL 1ST FLOOR BREEZEWAYS.
- PROVIDE 22"x36" ATTIC ACCESS AT TOP FLOOR UNITS ONLY.

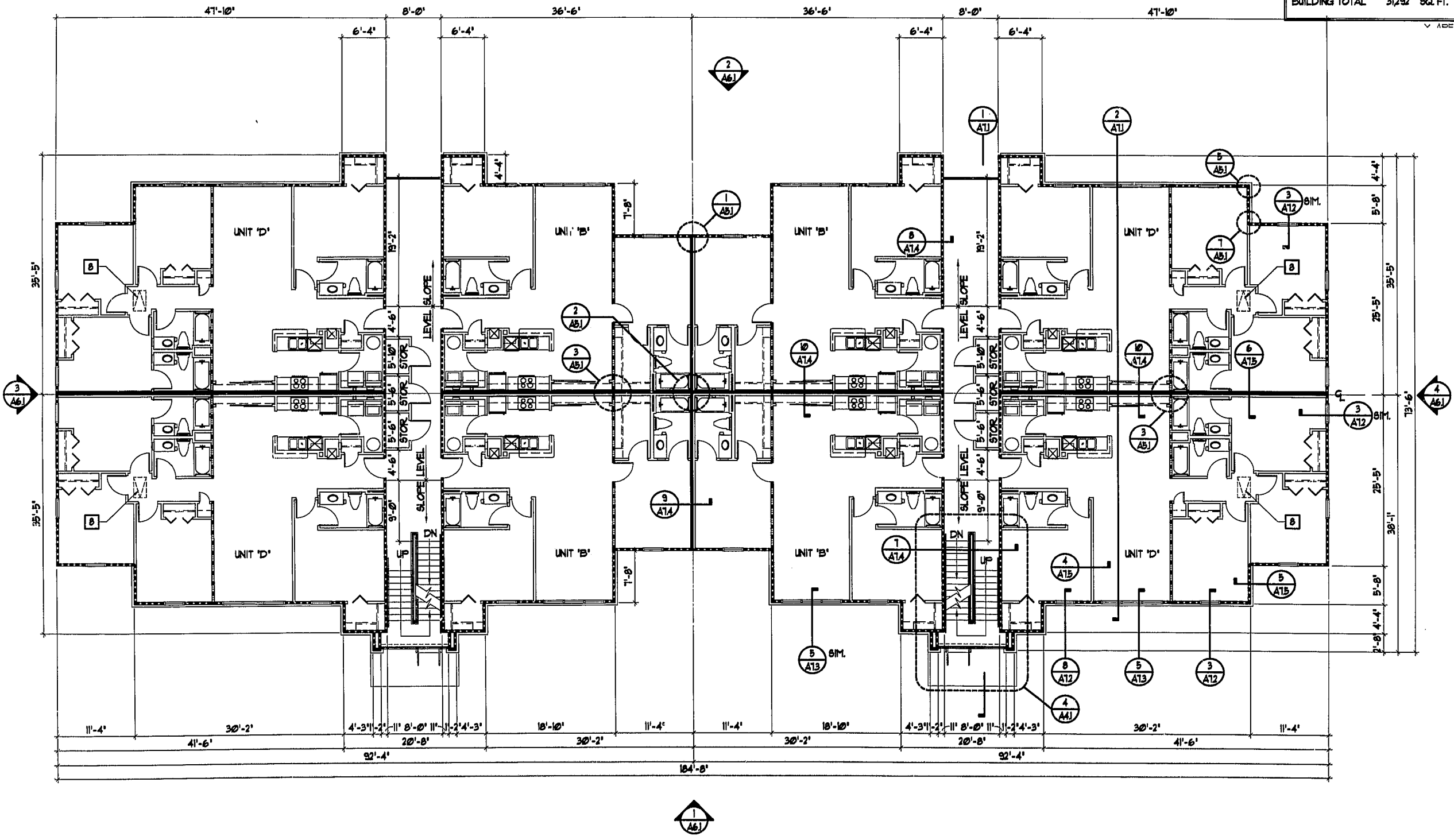
X-NOTE#2

WALL LEGEND

- 3-1/2" STUDS W/ 1 LAYER OF 5/8" TYPE 'X' GYP. BOARD ON EACH SIDE OF TENANT SEPARATION WALL. FILL WITH 3-1/2" MIN. BATT INSULATION BOTH SIDES.
- EXTERIOR WALL W/ 1 LAYER OF 5/8" TYPE 'X' GYP. BOARD ON INTERIOR FACE.
- INTERIOR BEARING WALL W/ 1 LAYER OF 5/8" TYPE 'X' GYP. BOARD ON EACH SIDE OF STUD WALL.
- 3-1/2" STUD WITH 1/2" GYPSUM BOARD BOTH SIDES AT INTERIOR WALLS.
- ATTIC DRAFTSTOPPING, 1 LAYER OF 1/2" GIBS OR OSB ON ONE SIDE OF ROOF TRUSS.

01-50-012
APPROVED
TOWN OF CARY

Approved By: DEC Date: 8-22-02
 Planning: 1222 Date: 6-13-02
 Engineering: TS Date: 6-12-02



BUILDING TYPE I - SECOND FLOOR PLAN
SCALE: 1/8" = 1'-0"

REVISIONS	BY
PERMIT SET	
3-26-02	

SLOCUM • PLATTS
ARCHITECTS DESIGN STUDIO, P.A.
 RANDALL J. SLOCUM AR 13350 WILLIAM P. PLATTS AR 13262
 300 SOUTH PARK AVE., SUITE 200
 WINTER PARK, FLORIDA 32789
 TEL. (407)545-3019 FAX (407)645-2771

RANDALL J. SLOCUM
NORTH CAROLINA

BLDG TYPE I - 2ND FLOOR PLAN - DBBD (BLDG. 4 + 5)
THE GROVES AT CARY PARK
APARTMENTS
 CARY

DRAWN	RMG
CHECKED	UFP
DATE	3-26-02
SCALE	AS NOTED
JOB NO.	01-045
SHEET	

A2.2

THE DRAWINGS IN THESE DRAWINGS ARE THE EXCLUSIVE PROPERTY OF SLOCUM • PLATTS / ARCHITECTS DESIGN STUDIO. THE COMPANY EXPRESSLY RESERVES THE RIGHT TO MODIFY OR ALTER ANY PART OF THESE DRAWINGS WITHOUT THE WRITTEN CONSENT OF SLOCUM • PLATTS / ARCHITECTS DESIGN STUDIO. ANY REPRODUCTION, REVISIONS OR MODIFICATIONS OF THESE DOCUMENTS WITHOUT THE EXPRESS WRITTEN CONSENT OF SLOCUM • PLATTS / ARCHITECTS DESIGN STUDIO IS PROHIBITED BY LAW.