

BUILDING TYPE II CBCB		
FIRST FLOOR		
LIVING	9,140	SQ. FT.
BREEZEWAYS	1,438	SQ. FT.
SUBTOTAL	10,578	SQ. FT.
SECOND FLOOR		
LIVING	9,140	SQ. FT.
BREEZEWAYS	1,154	SQ. FT.
SUBTOTAL	10,294	SQ. FT.
THIRD FLOOR		
LIVING	7,588	SQ. FT.
BREEZEWAYS	1,154	SQ. FT.
SUBTOTAL	8,742	SQ. FT.
<b>BUILDING TOTAL</b>	<b>29,614</b>	<b>SQ. FT.</b>

X-AREA

**SELECTIVE CONDOC NOTES**

**GENERAL NOTES**

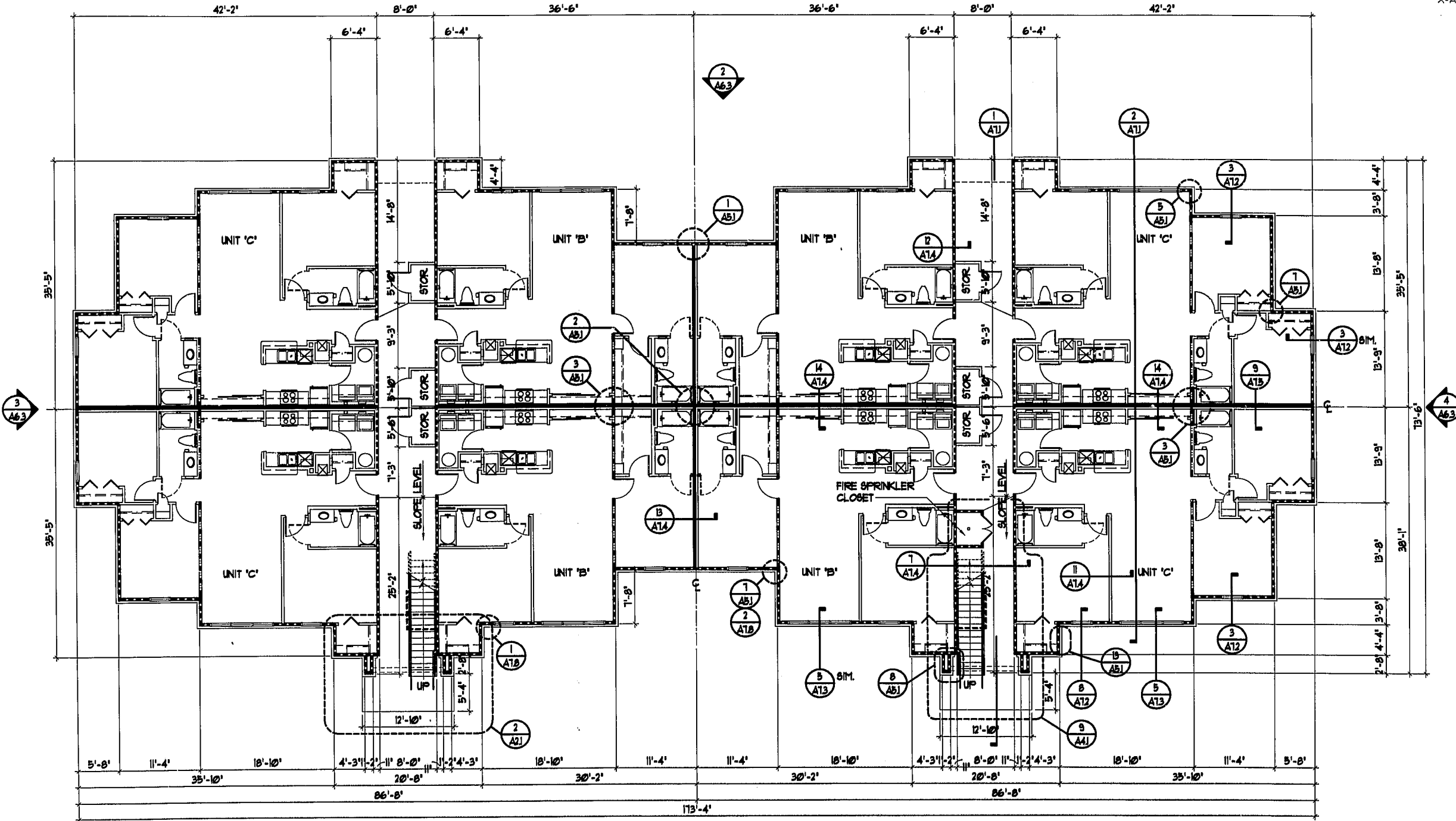
1. CONFIRM ALL FINISH GRADE AND FINISH FLOOR ELEVATIONS WITH APPROVED SITE ENGINEERING.
2. CONFIRM PORCH AND STEP REQUIREMENTS WITH APPROVED CIVIL ENGINEERING. PROVIDE CONTINUOUS VENTED SOFFIT AT ALL OVERHANGS.
3. INTERIOR AND EXTERIOR LOAD BEARING PARTITIONS AT GROUND FLOOR UNITS TO BE 3x4 STUDS AT 16" O.C. IN 3 STORY PORTIONS OF BUILDING PER CODE.
4. REFER TO SITE WORK DRAWINGS FOR SIDEWALK LOCATIONS.
5. VERIFY LOCATION OF FIRE RISER EQUIPMENT ACCESS PANEL WITH FIRE PROTECTION SYSTEMS ENGINEERS AND PLUMBING.
6. PROVIDE LOCATION AND INSPECTOR TEST VALVE ACCESS PANEL AS REQUIRED.
7. SEE STRUCTURAL DRAWINGS FOR SLOPED FLOOR SLAB ELEVATIONS, TYPICAL ALL 1ST FLOOR BREEZEWAYS.
8. PROVIDE 22"x36" ATTIC ACCESS AT TOP FLOOR UNITS ONLY.

X-NOTE2

**WALL LEGEND**

- 3-1/2" STUDS W/ 1 LAYER OF 5/8" TYPE 'X' GYP. BOARD ON EACH SIDE OF TENANT SEPARATION WALL. FILL WITH 3-1/2" MIN. BATT INSULATION BOTH SIDES.
- EXTERIOR WALL W/ 1 LAYER OF 5/8" TYPE 'X' GYP. BOARD ON INTERIOR FACE.
- INTERIOR BEARING WALL W/ 1 LAYER OF 5/8" TYPE 'X' GYP. BOARD ON EACH SIDE OF STUD WALL.
- 3-1/2" STUD WITH 1/2" GYPSUM BOARD BOTH SIDES AT INTERIOR WALLS.
- ATTIC DRAFTSTOPPING, 1 LAYER OF 1/2" GYB OR OSB ON ONE SIDE OF ROOF TRUSS.

X-WLEG



01-50-012-  
**APPROVED**  
TOWN OF CARY

Approved By: DEC Date: 6-22-02  
 Planning: EST Date: 6-13-02  
 Engineering: TS Date: 6-12-02

**BUILDING TYPE II - FIRST FLOOR PLAN**  
SCALE: 1/8" = 1'-0"

REVISIONS	BY
PERMIT SET	
3-26-02	

**SLOCUM • PLATTS**  
**ARCHITECTS DESIGN STUDIO, P.A.**  
 RANDALL J. SLOCUM AR 13350 WILLIAM P. PLATTS AR 13262  
 300 SOUTH PARK AVE, SUITE 200  
 WINTER PARK, FLORIDA 32789  
 TEL: (407)645-3019 FAX: (407)645-2771

RANDALL J. SLOCUM  
 ARCHITECT  
 NORTH CAROLINA 2006

**BLDG. TYPE I - 1ST FLOOR PLAN - CBCB (BLDG. 3)**  
**THE GROVES AT CARY PARK**  
**APARTMENTS**  
 CARY  
 NORTH CAROLINA

DRAWN	RMG
CHECKED	WFP
DATE	3-26-02
SCALE	AS NOTED
JOB NO.	01-045
SHEET	

**A29**