

| BUILDING TYPE II CBBC | | |
|-----------------------|---------------|----------------|
| FIRST FLOOR | | |
| LIVING | 9,140 | SQ. FT. |
| BREEZEWAYS | 1,433 | SQ. FT. |
| SUBTOTAL | 10,573 | SQ. FT. |
| SECOND FLOOR | | |
| LIVING | 9,140 | SQ. FT. |
| BREEZEWAYS | 1,154 | SQ. FT. |
| SUBTOTAL | 10,294 | SQ. FT. |
| THIRD FLOOR | | |
| LIVING | 7,588 | SQ. FT. |
| BREEZEWAYS | 1,154 | SQ. FT. |
| SUBTOTAL | 8,742 | SQ. FT. |
| BUILDING TOTAL | 29,614 | SQ. FT. |

SELECTIVE CONDOC NOTES

GENERAL NOTES

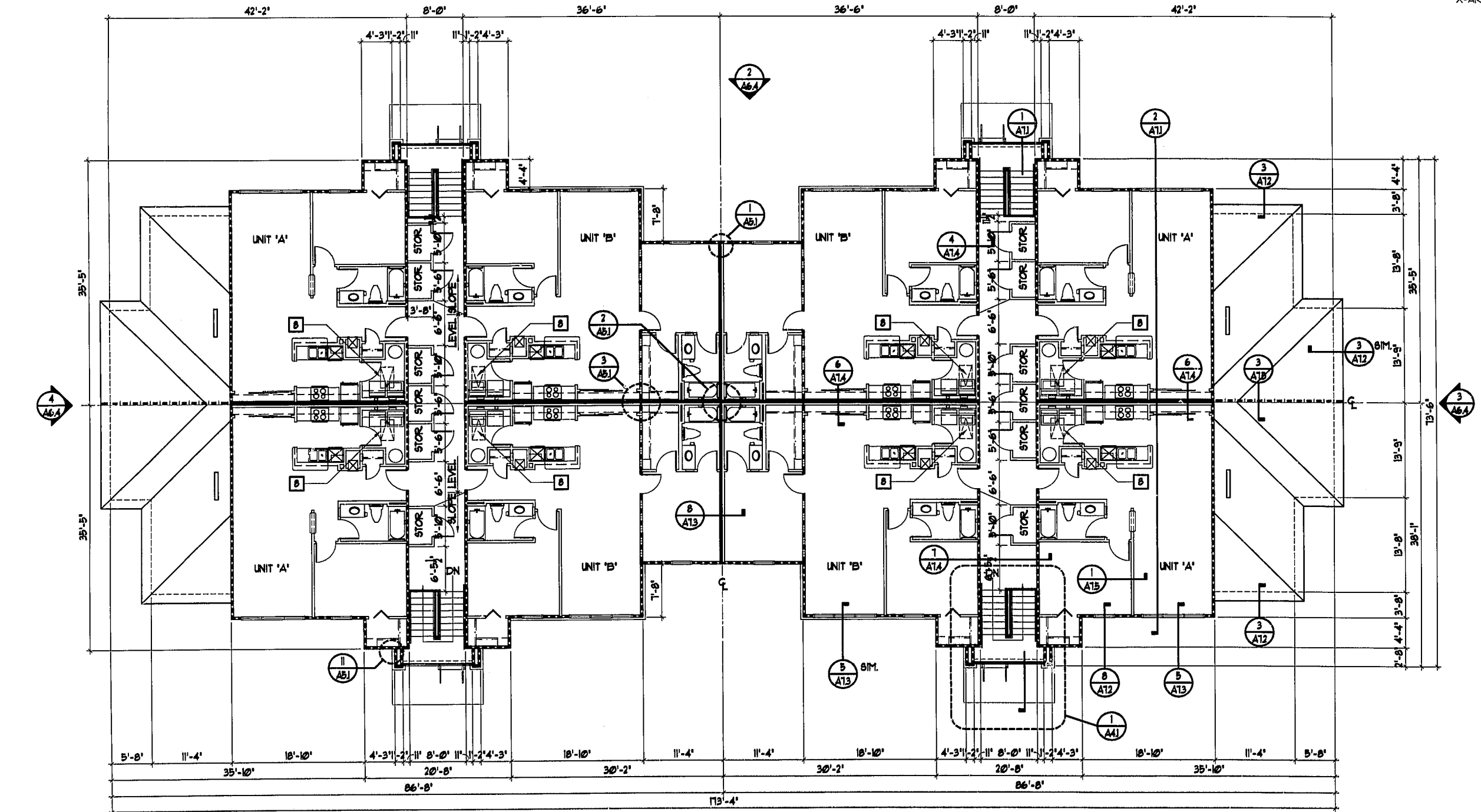
- CONFIRM ALL FINISH GRADE AND FINISH FLOOR ELEVATIONS WITH APPROVED SITE ENGINEERING.
- CONFIRM PORCH AND STEP REQUIREMENTS WITH APPROVED CIVIL ENGINEERING. PROVIDE CONTINUOUS VENTED SOFFIT AT ALL OVERHANGS.
- INTERIOR AND EXTERIOR LOAD BEARING PARTITIONS AT GROUND FLOOR UNITS TO BE 3x4 STUDS AT 16" O.C. IN 3 STORY PORTIONS OF BUILDING PER CODE.
- REFER TO SITE WORK DRAWINGS FOR SIDEWALK LOCATIONS.
- VERIFY LOCATION OF FIRE RISER EQUIPMENT ACCESS PANEL WITH FIRE PROTECTION SYSTEMS ENGINEERS AND PLUMBING.
- PROVIDE LOCATION AND INSPECTOR TEST VALVE ACCESS PANEL AS REQUIRED.
- SEE STRUCTURAL DRAWINGS FOR SLOPED FLOOR SLAB ELEVATIONS, TYPICAL ALL 1ST FLOOR BREEZEWAYS.
- PROVIDE 22"x36" ATTIC ACCESS AT TOP FLOOR UNITS ONLY.

WALL LEGEND

- 3-1/2" STUDS W/ 1 LAYER OF 5/8" TYPE 'X' GYP. BOARD ON EACH SIDE OF TENANT SEPARATION WALL. FILL WITH 3-1/2" MIN. BATT INSULATION BOTH SIDES.
- EXTERIOR WALL W/ 1 LAYER OF 5/8" TYPE 'X' GYP. BOARD ON INTERIOR FACE.
- INTERIOR BEARING WALL W/ 1 LAYER OF 5/8" TYPE 'X' GYP. BOARD ON EACH SIDE OF STUD WALL.
- 3-1/2" STUD WITH 1/2" GYPSUM BOARD BOTH SIDES AT INTERIOR WALLS.
- ATTIC DRAFTSTOPPING, 1 LAYER OF 1/2" GIB OR OSB ON ONE SIDE OF ROOF TRUSS.

01-58-012
APPROVED
TOWN OF CARY

Approved By: DRC Date: 5-22-02
 Planning: YB Date: 4-13-02
 Engineering: TS Date: 4-12-02



BUILDING TYPE II - THIRD FLOOR PLAN
SCALE: 1/8" = 1'-0"

| REVISIONS | BY |
|-----------------------|----|
| PERMIT SET 3-26-02 | |
| | |
| | |

SLOCUM • PLATTS
ARCHITECTS DESIGN STUDIO, P.A.
 RANDALL J. SLOCUM AR 13350 WILLIAM P. PLATTS AR 13262
 300 SOUTH PARK AVE, SUITE 200
 WINTER PARK, FLORIDA 32789
 TEL: (407)645-3019 FAX: (407)645-2771

RANDALL J. SLOCUM
 NORTH CAROLINA 18866

BLDG. TYPE II - 3RD FLOOR PLAN - ABBA (BLDG. 1 + 2)
THE GROVES AT CARY PARK
APARTMENTS
 NORTH CAROLINA
 CARY

| | |
|---------|----------|
| DRAWN | RMG |
| CHECKED | WFP |
| DATE | 3-26-02 |
| SCALE | AS NOTED |
| JOB NO. | 01-045 |
| SHEET | |

A2.15