

BUILDING TYPE II CBBC	
FIRST FLOOR	
LIVING	9,140 SQ. FT.
BREEZEWAYS	1,438 SQ. FT.
SUBTOTAL	10,578 SQ. FT.
SECOND FLOOR	
LIVING	9,140 SQ. FT.
BREEZEWAYS	1,154 SQ. FT.
SUBTOTAL	10,294 SQ. FT.
THIRD FLOOR	
LIVING	7,500 SQ. FT.
BREEZEWAYS	1,154 SQ. FT.
SUBTOTAL	8,742 SQ. FT.
<b>BUILDING TOTAL</b>	<b>29,614 SQ. FT.</b>

X-AREA

**SELECTIVE CONDOC NOTES**

**GENERAL NOTES**

- CONFIRM ALL FINISH GRADE AND FINISH FLOOR ELEVATIONS WITH APPROVED SITE ENGINEERING.
- CONFIRM PORCH AND STEP REQUIREMENTS WITH APPROVED CIVIL ENGINEERING. PROVIDE CONTINUOUS VENTED SOFFIT AT ALL OVERHANGS.
- INTERIOR AND EXTERIOR LOAD BEARING PARTITIONS AT GROUND FLOOR UNITS TO BE 3x4 STUDS AT 16" O.C. IN 3 STORY PORTIONS OF BUILDING PER CODE.
- REFER TO SITE WORK DRAWINGS FOR SIDEWALK LOCATIONS.
- VERIFY LOCATION OF FIRE RISER EQUIPMENT ACCESS PANEL WITH FIRE PROTECTION SYSTEMS ENGINEERS AND PLUMBING.
- PROVIDE LOCATION AND INSPECTOR TEST VALVE ACCESS PANEL AS REQUIRED.
- SEE STRUCTURAL DRAWINGS FOR SLOPED FLOOR SLAB ELEVATIONS, TYPICAL ALL 1ST FLOOR BREEZEWAYS.
- PROVIDE 22"x36" ATTIC ACCESS AT TOP FLOOR UNITS ONLY.

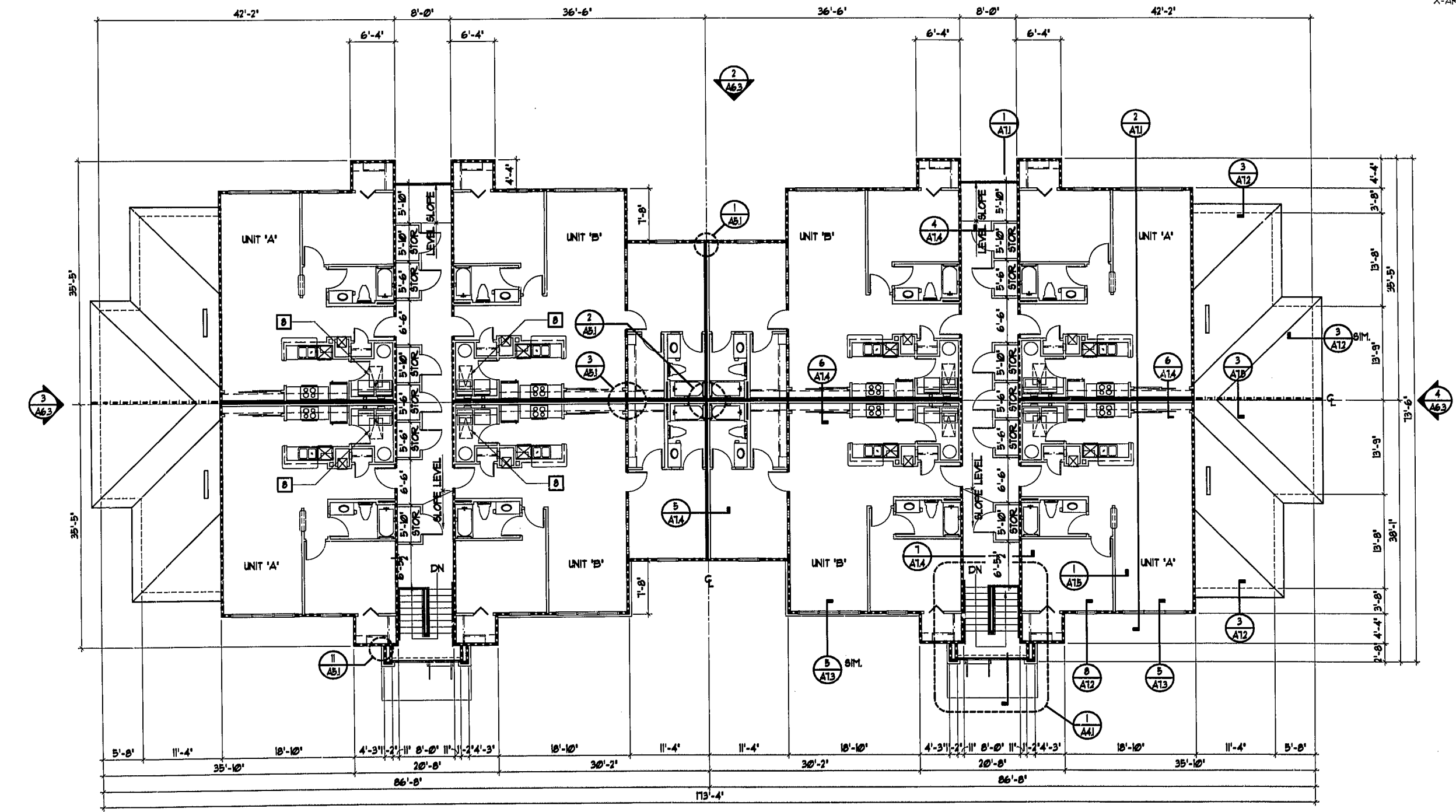
X-NOTE A2

**WALL LEGEND**

- 3-1/2" STUDS W/ 1 LAYER OF 5/8" TYPE 'X' GYP. BOARD ON EACH SIDE OF TENANT SEPARATION WALL. FILL WITH 3-1/2" MIN. BATT INSULATION BOTH SIDES.
- EXTERIOR WALL W/ 1 LAYER OF 5/8" TYPE 'X' GYP. BOARD ON INTERIOR FACE.
- INTERIOR BEARING WALL W/ 1 LAYER OF 5/8" TYPE 'X' GYP. BOARD ON EACH SIDE OF STUD WALL.
- 3-1/2" STUD WITH 1/2" GYPSUM BOARD BOTH SIDES AT INTERIOR WALLS.
- ATTIC DRAFTSTOPPING, 1 LAYER OF 1/2" GYB OR OSB ON ONE SIDE OF ROOF TRUSS.

X-WLEG

01-50-012-  
**APPROVED**  
TOWN OF GARY  
Approved By: *DRC* Date: 5-22-02  
Planning: *BP* Date: 5-13-02  
Engineering: *TS* Date: 4-12-02



**BUILDING TYPE II - THIRD FLOOR PLAN**  
SCALE: 1/8" = 1'-0"

REVISIONS	BY
PERMIT SET	
3-26-02	

**SLOCUM • PLATTS**  
ARCHITECTS DESIGN STUDIO, P.A.  
RANDALL J. SLOCUM AR 13350 WILLIAM P. PLATTS AR 13262  
300 SOUTH PARK AVE., SUITE 200  
WINTER PARK, FLORIDA 32789  
TEL: (407)645-3019 FAX: (407)645-2771

RANDALL J. SLOCUM  
NORTH CAROLINA 1986

**BLDG. TYPE I - 3RD FLOOR PLAN - ABBA (BLDG. 3)**  
**THE GROVES AT CARY PARK**  
**APARTMENTS**  
CARY  
NORTH CAROLINA

DRAWN	RMG
CHECKED	WFP
DATE	3-26-02
SCALE	AS NOTED
JOB NO.	01-045
SHEET	

**A2.11**