

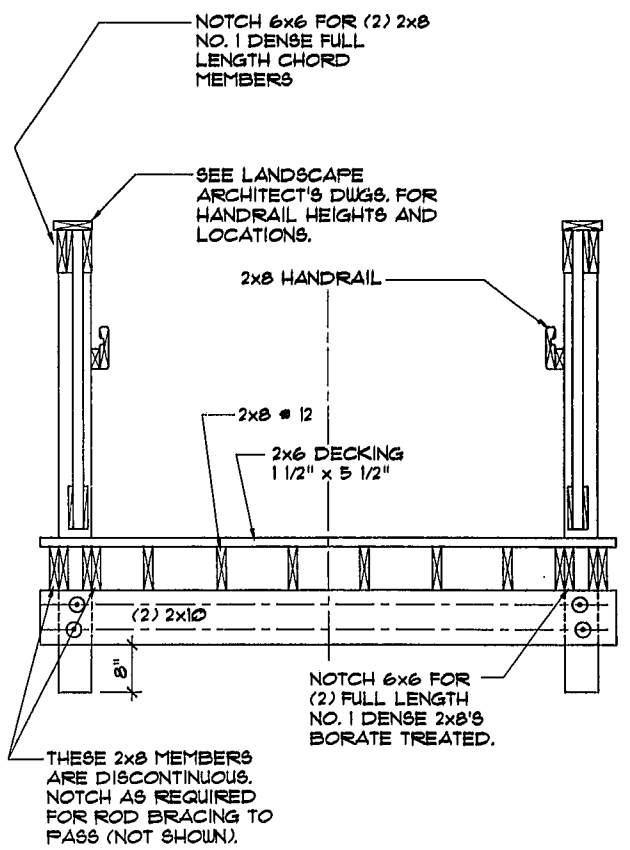
NOTES:

THE TIMBER PEDESTRIAN BRIDGE INCLUDES A RAILING/ TRUSS SYSTEM WHICH WILL REQUIRE THAT FULL LENGTH (APPROX. 30 FEET) CONTINUOUS CHORD PIECES BE PURCHASED.

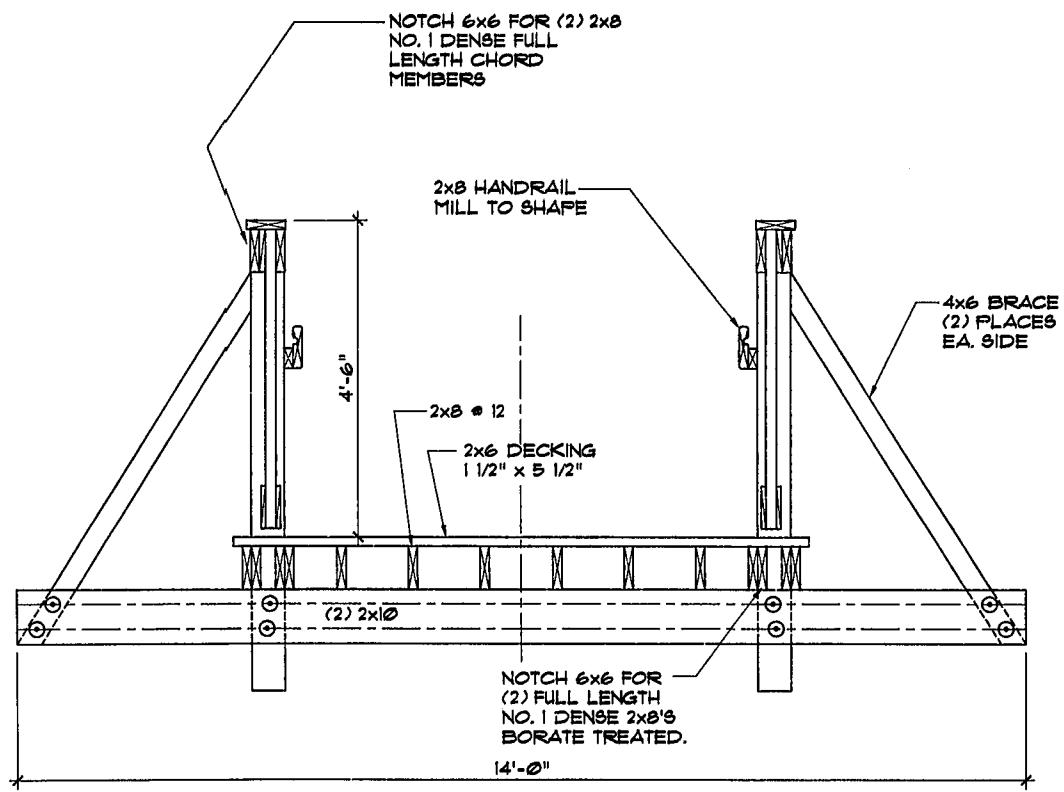
NO SPLICES WILL BE ALLOWED IN THESE MEMBERS.

THE END POINTS WHICH BEAR ON THE RETAINING WALL SHALL BE DESIGNED TO SUPPORT 10 KIPS PER TRUSS.

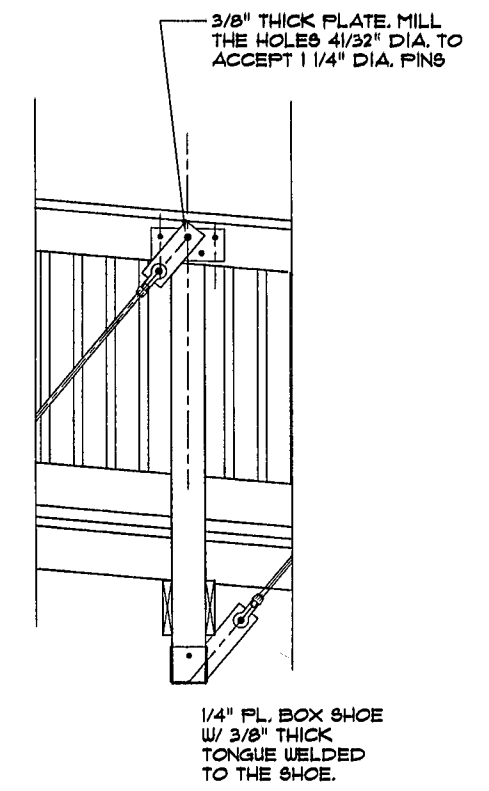
1 PEDESTRIAN BRIDGE
 SCALE 1/4" = 1'-0"



2 SECT. @ BRIDGE
 SCALE 3/4" = 1'-0"



3 BRIDGE SECTION
 SCALE 3/4" = 1'-0"



4 BRIDGE SECTION
 SCALE 3/4" = 1'-0"

01-SB-012-
APPROVED
TOWN OF CARY

Approved by D.E.C. Date 5-22-02
 Planning Date 6-13-02
 Engineering Date 6-12-02

NOTE:
 THE TIMBER PEDESTRIAN BRIDGE AND WALKWAY IS AN ALTERNATE TO THE PRE-FABRICATED BRIDGE SHOWN ON SHEETS S1 AND S2.

NO.	REVISION	DATE	BY

Designer	DCF	Scale	As Noted
Drawn By	CG, DCF	Date	JUNE 4, 2002
Checked By	DCF	Job No.	02021

THE GROVE AT CARY PARK

7 FOOT WIDE TIMBER PEDESTRIAN BRIDGE (ALTERNATE)
BRIDGE ELEVATION AND RAILING DETAILS.

WITHERS & RAVENEL
 ENGINEERS | PLANNERS | SURVEYORS

111 MacKenzie Drive Cary, North Carolina 27511 tel: 919-487-3340 fax: 919-487-6008 www.wITHERSRAVENEL.com

Sheet No: **S3**