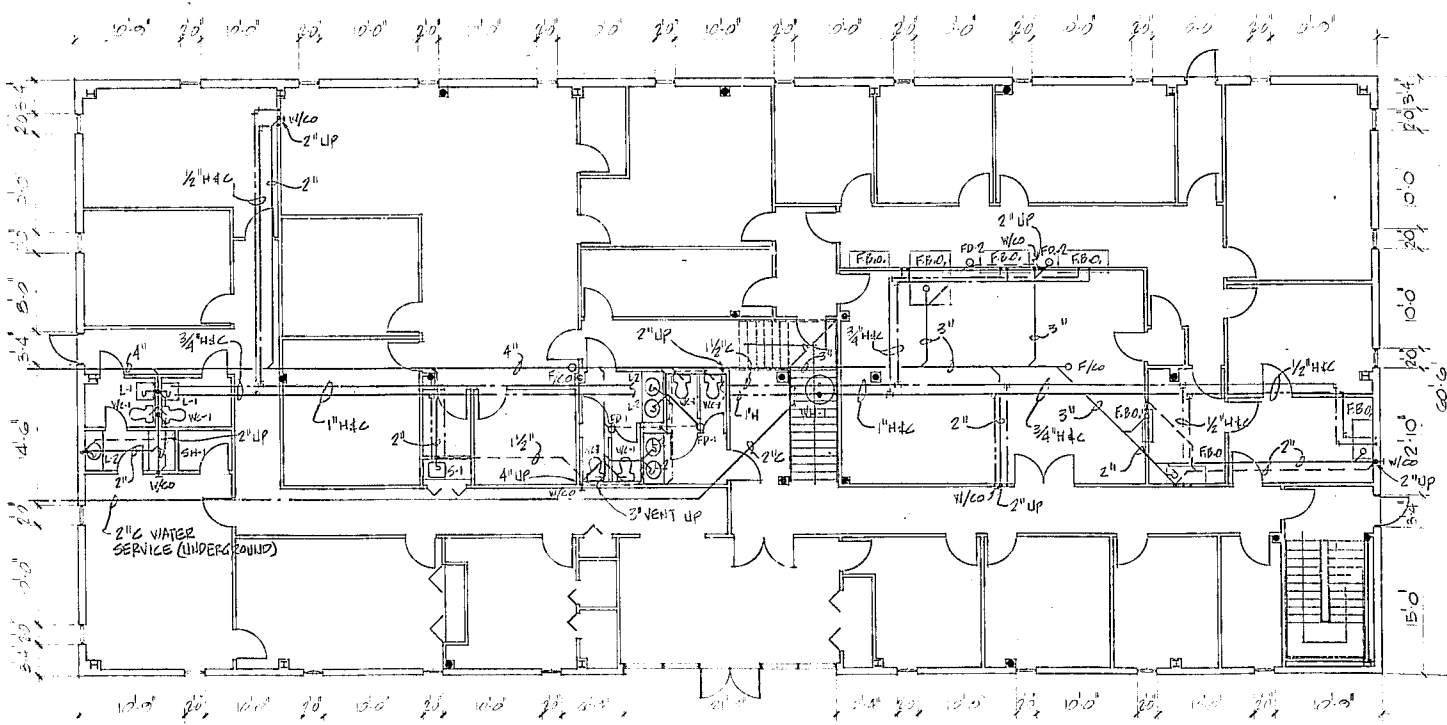
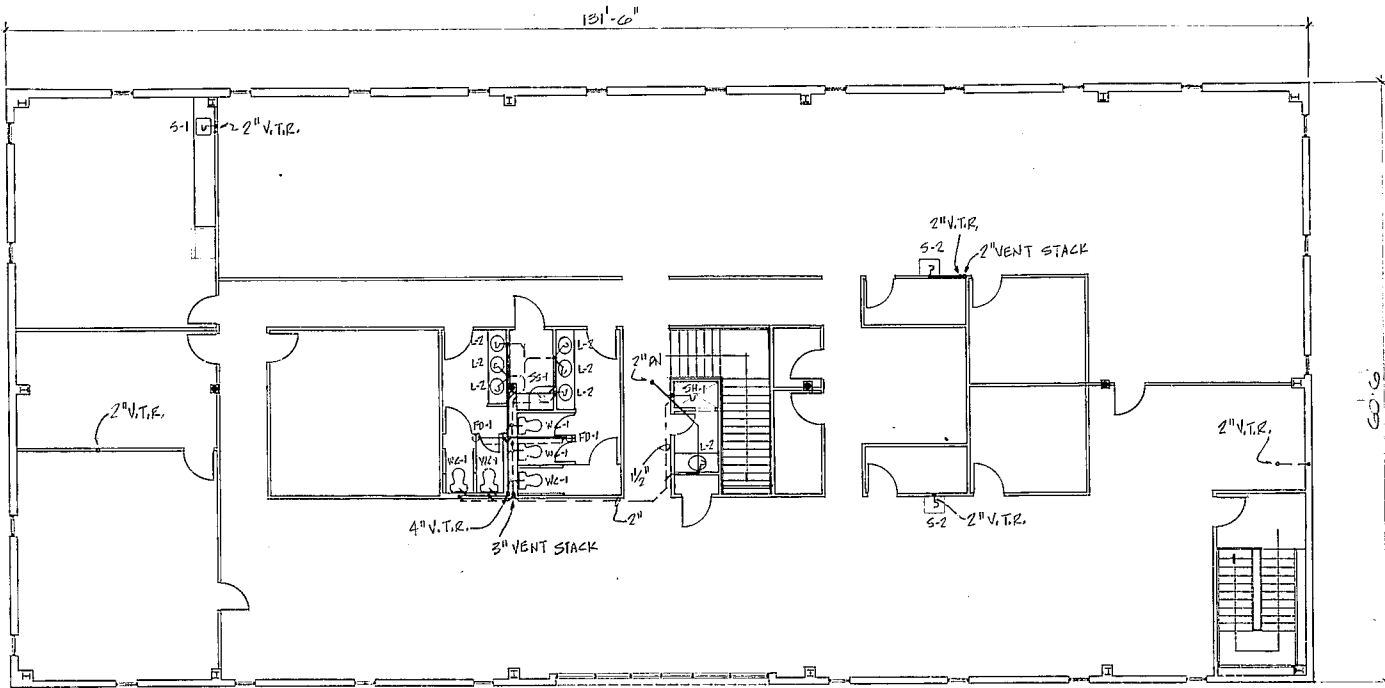


LEGEND & SCHEDULE

- WC-1 WATER CLOSET- ELONGATED, VITREOUS CHINA, SIPHON JET ACTION BOWL
MFR: ELJER # 091-0005
SEAT- CLOSED FRONT W/COVER, MFR: ELJER # AS REQ'D.
SUPPLY- MFR: ELJER # 802-0225
- L-1 LAVATORY- VITREOUS CHINA, 4" CENTERS, WALL HANGER, SIZE: 20" X 16"
MFR: ELJER # 051-1644
FAUCET- 4" CENTERSET W/ POP-UP DRAIN, MFR: ELJER # 552-1400
SUPPLIES- MFR: ELJER # 802-0320
TRAP- 1" 1/2" INLET, 1/2" OUTLET, MFR: ELJER # 804-1155
CARRIER- BACK MTG PLATE
- L-2 LAVATORY- VITREOUS CHINA, 4" CENTERS, SELF RIMMING, OVAL SIZE: 20" X 17"
MFR: ELJER # 051-3324
FAUCET } SAME AS 'L-1' ABOVE
SUPPLIES }
TRAP }
- S-1 LAVATORY- VITREOUS CHINA, 4" CENTERS, SELF RIMMING, SIZE: 19" X 16"
MFR: ELJER # 051-3333
FAUCET } SAME AS 'L-1' ABOVE
SUPPLIES }
TRAP }
- S-2 LAVATORY- VITREOUS CHINA, CABINET INSTALLATION W/ INTEGRAL BOWL, 4" CENTERS
SIZE: 25" X 22", MFR: ELJER # 051-3414
FAUCET } SAME AS 'L-1' ABOVE
SUPPLIES }
TRAP }
- SE-1 SERVICE SINK- ACID RESISTING ENAMELED CAST IRON, CORNER FLOOR MTD.
SIZE: 26" X 28", MFR: ELJER # 242-0050
STRAINER- FLAT METAL GRID, MFR: ELJER # 803-0630
FAUCET- W/ RUBBER HOSE & WALL HOOK, MFR: ELJER # 749-1450
- SH-1 SHOWER FITTING- BUILT-IN TWO VALVES W/ BALL JOINT SHOWER HEAD
MFR: ELJER # 536-0354
- FD-1 FLOOR DRAIN - 5" Ø STRAINER (TYPE 'B') W/ 3" PIPE SIZE, PROVIDE TRAP
MFR: ZURN # Z-415
- F/CO CLEANOUT- FLOOR MTD.
- W/CO CLEANOUT- WALL MTD.
- COLD WATER SUPPLY LINE
- HOT WATER SUPPLY LINE
- SANITARY, SOIL OR WASTE LINE
- VENT LINE
- V.T.R. VENT THROUGH ROOF
- WH-1 WATER HEATER- ELECTRIC, 52 GAL CAP, 9.0 KW, 208/3/60
3 ELEMENTS, 3.0 KW EA., W/ P.T.T. RELIEF VALVE
MFR: STATE # 585-52-91E
- FD-2 FLOOR DRAIN - SAME AS 'FD-1' ABOVE EXCEPT TYPE 'E' FUNNEL STRAINER
- F.B.O. EQUIPMENT FURNISHED AND INSTALLED BY OWNER

NOTES

1. MEET ALL REQUIREMENTS OF STATE AND LOCAL PLUMBING CODES.
2. INSULATE ALL WATER SUPPLY PIPING. SEE SPECS.
3. FURNISH AND INSTALL FULL SIZE AIR CHAMBERS AT EACH FIXTURE AND ATOP ALL HOT AND COLD SUPPLY RISERS. AIR CHAMBERS SHALL BE 1'-6" LONG.
4. PROVIDE SHUT OFF VALVES AT EACH HOT AND COLD WATER SUPPLY BRANCH FOR ISOLATING OF FIXTURES.
5. PROVIDE GLASS TRAPS AND TAILPIECES, ACID RESISTING SCH. 80 POLYPROPYLENE PIPE FROM TRAP TO HUB ABOVE FLOOR FOR ALL EQUIPMENT AND FIXTURES AS DIRECTED BY OWNER.
6. CONTRACTOR SHALL ROUGH-IN ALL PIPING FOR EQUIPMENT MARKED 'FBO' FOR FUTURE INSTALLATION. VERIFY ROUGH-IN LOCATION AND CONNECTION WITH OWNER BEFORE INSTALLATION.

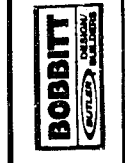


REVISIONS:



WALTER DAVIS AIA
SHEET D-104
1301 MILLBROOK ROAD
RALEIGH, NORTH CAROLINA
919-873-2360 27600

LANDMARK
OFFICE BUILDING
CARY, N.C.



DEC. 1982

JOB #8254

P-1