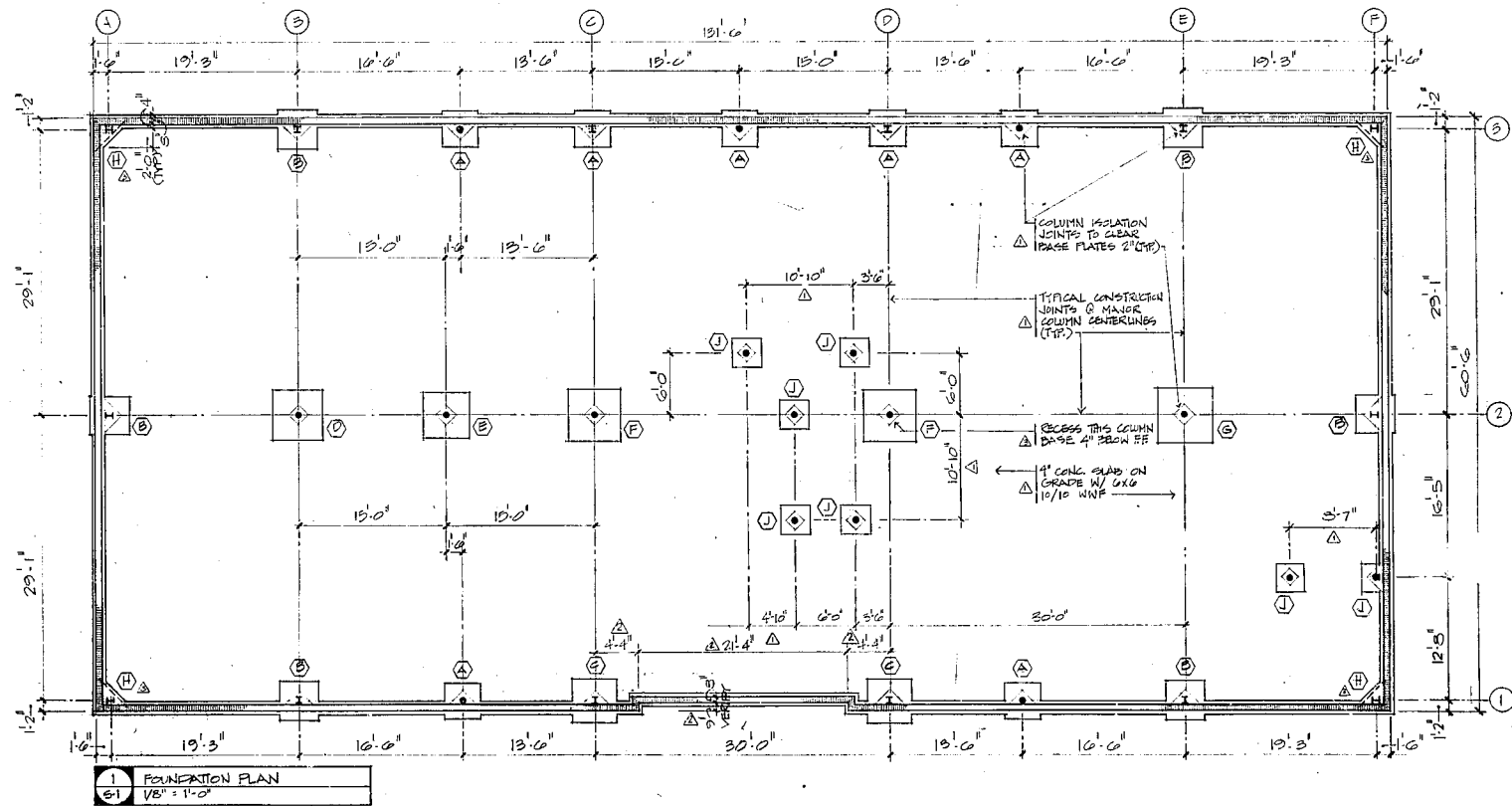


FOOTING SCHEDULE		
MARK	SIZE	REINF.
(A)	3'-0" x 3'-0" x 10'	4-#4 EA. WAY (BOTTOM)
(B)	4'-0" x 4'-0" x 12'	4-#4 EA. WAY (BOTTOM)
(C)	4'-0" x 4'-0" x 12'	6-#4 EA. WAY (BOTTOM)
(D)	5'-0" x 5'-0" x 12'	7-#4 EA. WAY (BOTTOM)
(E)	4'-0" x 4'-0" x 12'	6-#4 EA. WAY (BOTTOM)
(F)	5'-4" x 5'-4" x 12'	5-#4 EA. WAY (BOTTOM)
(G)	5'-0" x 5'-0" x 12'	10-#4 EA. WAY (BOTTOM)
(H)	SEE DNG	DIAG. #4 (TOP & BOTTOM)
(J)	3'-0" x 3'-0" x 10'	3-#4 EA. WAY (BOTTOM)

- NOTE:
1. ALL REINF. BARS TO BE GRADE OR STEEL DEFORMED BARS
  2. WALL FOOTINGS 1'-4" x 10" DEEP REINF. W/ 2-#4 (CONT.)
  3. CONC. 3000 PSI
  4. BOTTOM OF EXTERIOR FOOTING TO BE MIN. 18" BELOW GRADE.
- △ 3" COLUMN BASES AT FINISHED FLOOR UNLESS NOTED OTHERWISE.

PLANS RECEIVED BY THE CITY OF CARY, N.C.  
 INSPECTION DIVISION 1-28-83  
 AND EXAMINED AS FOLLOWS:

ITEM	DATE	ENGINEER	H & A/C
1. Approved			
2. Approved AT ST.			
3. Disapproved			
4. Date			



1 FOUNDATION PLAN  
 1/8" = 1'-0"

REVISIONS

- 1. 12/1/82
- 2. 12/1/82
- 3. 12/1/82
- 4. 12/1/82

LANDMARK  
 OFFICE BUILDING  
 CARY, N.C.

BOBBITT  
 ENGINEERS

DEC. 1982

JOB # 2234

S1