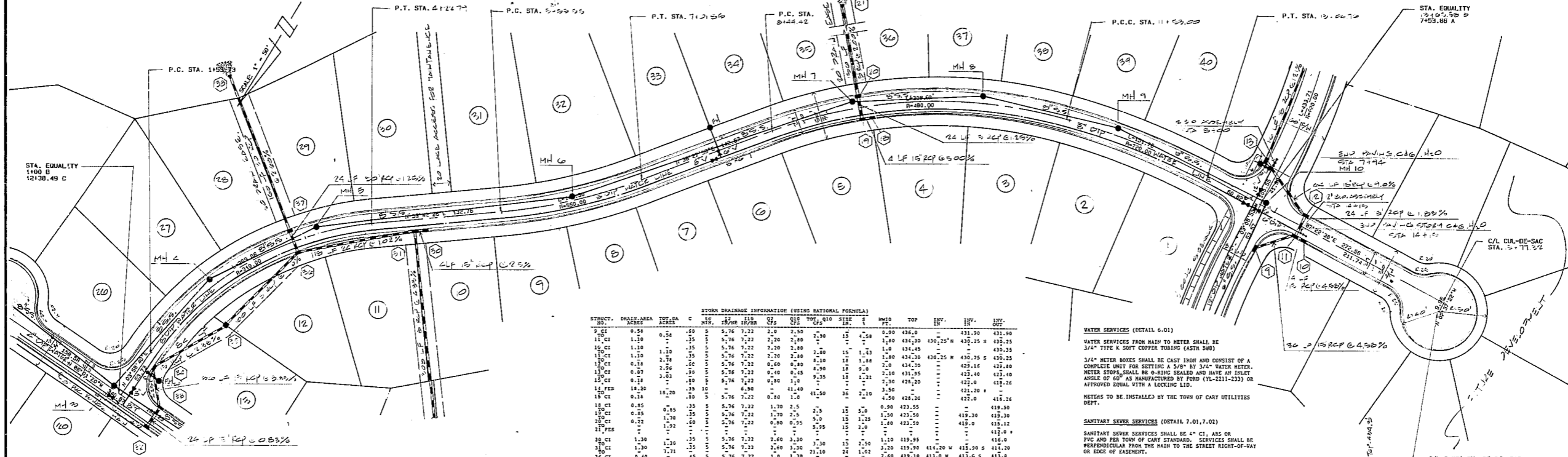


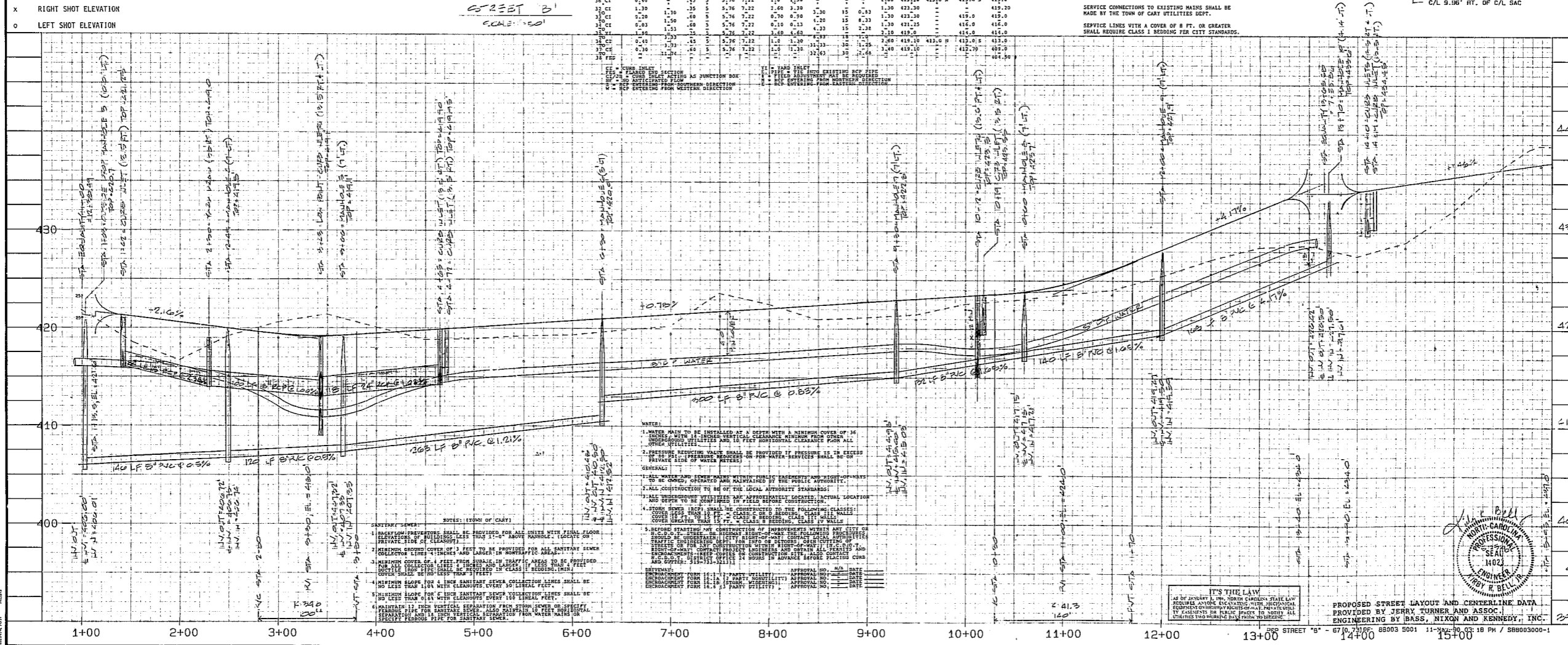
TO BE CONSTRUCTED PER TOWN OF CARY STANDARDS.



STRUCT. NO.	DRAIN AREA ACRES	TOP OF MANHOLE	STORM DRAINAGE INFORMATION (USING RATIONAL FORMULA)									
			MIN.	15 MIN.	30 MIN.	45 MIN.	1 HR.	2 HR.	3 HR.	4 HR.	5 HR.	
1	0.38	420.5	5.76	7.22	7.20	7.20	7.20	7.20	7.20	7.20	7.20	
2	0.38	420.5	5.76	7.22	7.20	7.20	7.20	7.20	7.20	7.20	7.20	
3	0.38	420.5	5.76	7.22	7.20	7.20	7.20	7.20	7.20	7.20	7.20	
4	0.38	420.5	5.76	7.22	7.20	7.20	7.20	7.20	7.20	7.20	7.20	
5	0.38	420.5	5.76	7.22	7.20	7.20	7.20	7.20	7.20	7.20	7.20	
6	0.38	420.5	5.76	7.22	7.20	7.20	7.20	7.20	7.20	7.20	7.20	
7	0.38	420.5	5.76	7.22	7.20	7.20	7.20	7.20	7.20	7.20	7.20	
8	0.38	420.5	5.76	7.22	7.20	7.20	7.20	7.20	7.20	7.20	7.20	
9	0.38	420.5	5.76	7.22	7.20	7.20	7.20	7.20	7.20	7.20	7.20	
10	0.38	420.5	5.76	7.22	7.20	7.20	7.20	7.20	7.20	7.20	7.20	

WATER SERVICES (DETAIL 6.01)
 WATER SERVICES FROM MAIN TO METER SHALL BE 3/4" TYPE K SOFT COPPER TUBING (ASTM B88)
 3/4" METER BOXES SHALL BE CAST IRON AND CONSIST OF A COMPLETE UNIT FOR SETTING A 3/8" BY 3/4" WATER METER. METER STOPS SHALL BE 6" RING SEALED AND HAVE AN INLET ANGLE OF 60° AS MANUFACTURED BY FORD (FL-2111-233) OR APPROVED EQUAL WITH A LOCKING LID.
 METERS TO BE INSTALLED BY THE TOWN OF CARY UTILITIES DEPT.

SANITARY SEWER SERVICES (DETAIL 7.01.7.02)
 SANITARY SEWER SERVICES SHALL BE 4" CI, ABS OR PVC AND PER TOWN OF CARY STANDARD. SERVICES SHALL BE PERPENDICULAR FROM THE MAIN TO THE STREET RIGHT-OF-WAY OR EDGE OF EASEMENT.
 SERVICE CONNECTIONS TO EXISTING MAINS SHALL BE MADE BY THE TOWN OF CARY UTILITIES DEPT.
 SERVICE LINES WITH A COVER OF 8" FC OR GREATER SHALL REQUIRE CLASS I BEDDING PER CITY STANDARDS.



NOTES: (TOWN OF CARY)

- PROVIDE SLOTTED COVERS FOR ALL UNITS WITH FINAL FLOOR FINISH TO BE MAINTAINED 1" TO 2" ABOVE FINISH. LOCATE ON PRIVATE SIDE OF CURB/ROADWAY.
- MINIMUM COVER OF 4 FEET FROM SURFACE TO TOP OF UNITS TO BE PROVIDED FOR ALL UNITS EXCEPT THOSE LOCATED IN AREAS TO BE PROVIDED FOR THE INSTALLATION OF A STREET LIGHT OR SIGN.
- MINIMUM COVER OF 6 FEET FROM SURFACE TO TOP OF UNITS TO BE PROVIDED FOR ALL UNITS EXCEPT THOSE LOCATED IN AREAS TO BE PROVIDED FOR THE INSTALLATION OF A STREET LIGHT OR SIGN.
- MINIMUM COVER OF 8 FEET FROM SURFACE TO TOP OF UNITS TO BE PROVIDED FOR ALL UNITS EXCEPT THOSE LOCATED IN AREAS TO BE PROVIDED FOR THE INSTALLATION OF A STREET LIGHT OR SIGN.
- MINIMUM COVER OF 10 FEET FROM SURFACE TO TOP OF UNITS TO BE PROVIDED FOR ALL UNITS EXCEPT THOSE LOCATED IN AREAS TO BE PROVIDED FOR THE INSTALLATION OF A STREET LIGHT OR SIGN.

WATER:

- WATER MAIN TO BE INSTALLED AT A DEPTH WITH A MINIMUM COVER OF 36" UNLESS OTHERWISE SPECIFIED.
- PRESSURE MAINS SHALL BE PROVIDED IF PRESSURE IS TO EXCEED 10 PSI. PRESSURE MAINS SHALL BE INSTALLED AT A DEPTH TO PREVENT FROST DAMAGE.
- WATER MAINS SHALL BE INSTALLED IN THE RIGHT-OF-WAY OR EASEMENT.
- WATER MAINS SHALL BE INSTALLED IN THE RIGHT-OF-WAY OR EASEMENT.

SEWERAGE:

- ALL CONSTRUCTION TO BE OF THE LOCAL AUTHORITY STANDARDS.
- ALL SEWERAGE UTILITIES ARE APPROXIMATELY LOCATED. ACTUAL LOCATION TO BE DETERMINED BY FIELD SURVEY.
- STORM SEWER LINES SHALL BE CONSTRUCTED IN THE FOLLOWING CLASSES:
 CLASS 1: MINIMUM COVER 4 FEET
 CLASS 2: MINIMUM COVER 6 FEET
 CLASS 3: MINIMUM COVER 8 FEET
 CLASS 4: MINIMUM COVER 10 FEET
- REPORT STARTING AND COMPLETION OF IMPROVEMENTS WITHIN 48 HOURS OF THE START AND END OF WORK.

PROPOSED STREET LAYOUT AND CENTERLINE DATA
 PROVIDED BY JERRY TURNER AND ASSOC.
 ENGINEERING BY BASS, NIXON AND KENNEDY, INC.

BANK
 BASS, NIXON & KENNEDY, INC., CONSULTING ENGINEERS
 919 / 851-4422 / 7416 CHAPEL HILL ROAD, RALEIGH, N. C. 27607

PHASE ONE LANGSTON SUBDIVISION
 OTTIE LEE STREET, WAKE COUNTY, N. C.
 DEVELOPER: COMMUNITY PROPERTIES, INC.

REGISTERED DATE: 01/27/02
 JOB NO.: 02-001
 DRAWN BY: J. TURNER
 PLAN & PROFILE
 SCALE: 1/4" = 1'-0" (VERT. 1" = 5')

NO. DATE NO. DATE
 1 01/27/02
 2 01/27/02
 3 01/27/02
 4 01/27/02
 5 01/27/02

PROF. SEAL
 JERRY K. BELL
 NORTH CAROLINA
 PROFESSIONAL ENGINEER
 14023
 01/27/02

DATE: 01/27/02

SHEET 5 OF 15