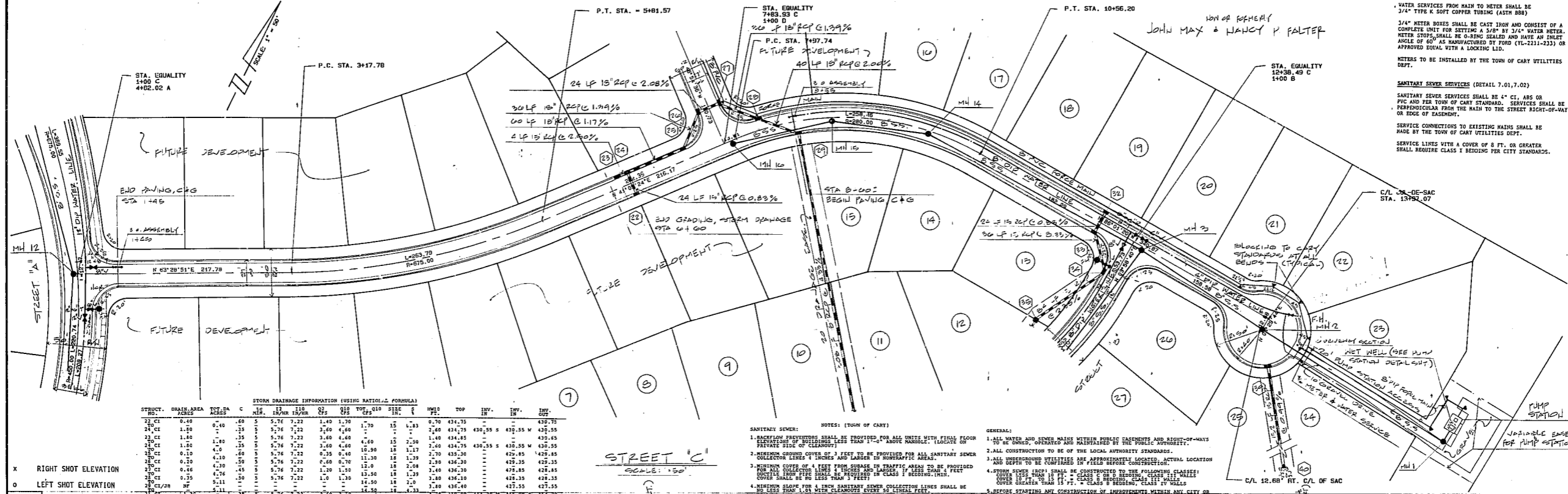
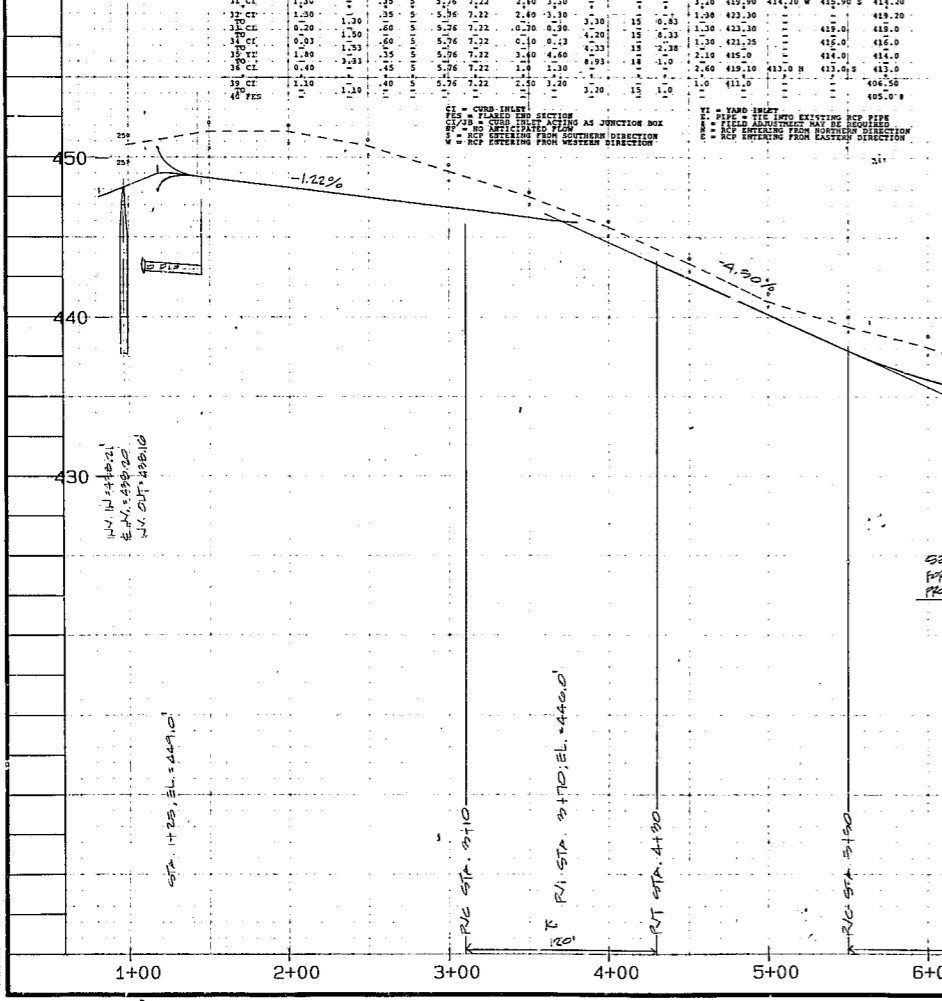


TO BE CONSTRUCTED PER TOWN OF CARY STANDARDS.



STORM DRAINAGE INFORMATION (USING RATIONAL FORMULA)

STRUCT.	DRAIN AREA	SCALES	NO.	15 MIN. INTENSITY	Q <sub>15</sub>	Q <sub>15</sub> (CFS)	Q <sub>15</sub> (MGD)	Q <sub>15</sub> (MGD)	Q <sub>15</sub> (MGD)	Q <sub>15</sub> (MGD)	Q <sub>15</sub> (MGD)	Q <sub>15</sub> (MGD)
22-C1	0.40	0.40	5	5.76	2.22	1.40	1.30	1.70	15	0.23	0.70	0.34
21-C1	1.00	0.40	5	5.76	2.22	3.60	4.90	15	0.23	2.40	0.44	
20-C1	1.00	0.40	5	5.76	2.22	3.60	4.90	15	0.23	2.40	0.44	
19-C1	1.00	0.40	5	5.76	2.22	3.60	4.90	15	0.23	2.40	0.44	
18-C1	1.00	0.40	5	5.76	2.22	3.60	4.90	15	0.23	2.40	0.44	
17-C1	1.00	0.40	5	5.76	2.22	3.60	4.90	15	0.23	2.40	0.44	
16-C1	1.00	0.40	5	5.76	2.22	3.60	4.90	15	0.23	2.40	0.44	
15-C1	1.00	0.40	5	5.76	2.22	3.60	4.90	15	0.23	2.40	0.44	
14-C1	1.00	0.40	5	5.76	2.22	3.60	4.90	15	0.23	2.40	0.44	
13-C1	1.00	0.40	5	5.76	2.22	3.60	4.90	15	0.23	2.40	0.44	
12-C1	1.00	0.40	5	5.76	2.22	3.60	4.90	15	0.23	2.40	0.44	
11-C1	1.00	0.40	5	5.76	2.22	3.60	4.90	15	0.23	2.40	0.44	
10-C1	1.00	0.40	5	5.76	2.22	3.60	4.90	15	0.23	2.40	0.44	
9-C1	1.00	0.40	5	5.76	2.22	3.60	4.90	15	0.23	2.40	0.44	
8-C1	1.00	0.40	5	5.76	2.22	3.60	4.90	15	0.23	2.40	0.44	
7-C1	1.00	0.40	5	5.76	2.22	3.60	4.90	15	0.23	2.40	0.44	
6-C1	1.00	0.40	5	5.76	2.22	3.60	4.90	15	0.23	2.40	0.44	
5-C1	1.00	0.40	5	5.76	2.22	3.60	4.90	15	0.23	2.40	0.44	
4-C1	1.00	0.40	5	5.76	2.22	3.60	4.90	15	0.23	2.40	0.44	
3-C1	1.00	0.40	5	5.76	2.22	3.60	4.90	15	0.23	2.40	0.44	
2-C1	1.00	0.40	5	5.76	2.22	3.60	4.90	15	0.23	2.40	0.44	
1-C1	1.00	0.40	5	5.76	2.22	3.60	4.90	15	0.23	2.40	0.44	



STREET C  
SCALE: 1"=50'

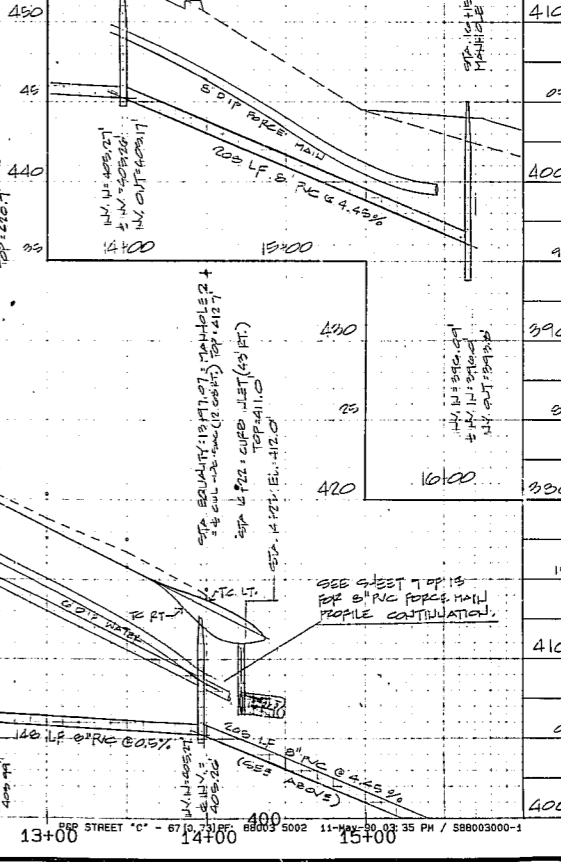
SEE SHEET 4 OF 5 FOR B' R/C FORCE MAIN PROFILE CONTINUATION.

SEE SHEET 7 OF 15 FOR B' R/C FORCE MAIN PROFILE CONTINUATION.

- NOTES: (TOWN OF CARY)
- BACKFLOW PREVENTION SHALL BE PROVIDED FOR ALL UNITS WITH FIFTH FLOOR OR PRIVATE SFC OF OCCUPANCY. (LOCATE ON PRIVATE SFC OF OCCUPANCY).
  - SEWER GRINDING COVER OF 3' SET BY BE PROVIDED FOR ALL SANITARY SEWER COLLECTOR LINES AND LARGES IS INDICATED BY NOTES.
  - SEWER COVER OF A FEET FROM SEWER IN TRAFFIC AREA TO BE PROVIDED FOR ALL COLLECTOR LINES. (LOCATE AND LABEL IF FEEL THAT A FEET COVER SHALL BE NO LESS THAN COVERED IN CLASS 1 BEDDING WITH 12" MINIMUM COVER).
  - SEWER GRADE FOR A FEET SANITARY SEWER COLLECTION LINES SHALL BE TO BE PROVIDED WITH 12" MINIMUM COVER TO BE PROVIDED.
  - SEWER GRADE FOR 6" R/C SANITARY SEWER COLLECTION LINES SHALL BE TO BE PROVIDED WITH 12" MINIMUM COVER TO BE PROVIDED.
  - MAINTAIN 12" MIN VERTICAL SEPARATION FROM STREET LIGHTS OR SPECIAL LIGHTING AND 6" MIN VERTICAL SEPARATION FROM WATER MAINS OR WATER SERVICES.
  - WATER MAIN SHALL BE INSTALLED AT A DEPTH WITH A MINIMUM COVER OF 3' FROM ALL UNDERGROUND UTILITIES AND TO BE PROVIDED WITH 12" MINIMUM COVER TO BE PROVIDED.

GENERAL:

- ALL WATER AND SEWER MAINS WITHIN PUBLIC RIGHT-OF-WAY SHALL BE OWNED, OPERATED AND MAINTAINED BY THE PUBLIC UTILITY DEPARTMENT.
- ALL CONSTRUCTION TO BE OF THE LOCAL AUTHORITY STANDARD.
- ALL UNDERGROUND UTILITIES ARE APPROXIMATE LOCATION AND DEPTH TO BE UTILIZED IN FIELD BEFORE CONSTRUCTION.
- UTILITY COVER (SEE LIST) SHALL BE CONSTRUCTED TO THE FOLLOWING CLASSIFICATION: CLASS 1: CLASS 1 SHALL BE TO BE PROVIDED WITH 12" MINIMUM COVER TO BE PROVIDED. CLASS 2: CLASS 2 SHALL BE TO BE PROVIDED WITH 12" MINIMUM COVER TO BE PROVIDED. CLASS 3: CLASS 3 SHALL BE TO BE PROVIDED WITH 12" MINIMUM COVER TO BE PROVIDED.
- BEFORE STARTING AND CONSTRUCTION OF IMPROVEMENTS, THE CITY OR COUNTY ENGINEER SHALL REVIEW AND APPROVE ALL CONSTRUCTION DOCUMENTS AND SHALL BE RESPONSIBLE FOR THE PROTECTION OF ALL UTILITIES. THE CITY OR COUNTY ENGINEER SHALL BE RESPONSIBLE FOR THE PROTECTION OF ALL UTILITIES.



**BANK**

BASS, NIXON & KENNEDY, INC., CONSULTING ENGINEERS  
919 / 851-4422 / 7416 CHAPEL HILL ROAD, RALEIGH, N. C. 27607

PHASE ONE  
CAMEL CREEK SUBDIVISION  
CAMEL CREEK TOWNSHIP, COUNTY OF WAKE, N. C.  
DEVELOPER: COMMUNITY PROPERTIES, INC.

NO.	DATE	REVISIONS
1	7/15/00	ISSUED FOR PERMITS
2	7/15/00	REVISED

SCALE: HORIZ. 1"=50' VERT. 1"=8'

SHEET 6 OF 15