

- NOTES:**
- WARNING SIGNS TO BE MADE OF DURABLE, WEATHERPROOF MATERIAL.
 - THE SIZE OF EACH SIGN MUST BE A MINIMUM OF 2 FEET BY 2 FEET.
 - SIGNS ARE TO BE SPACED A MINIMUM OF ONE EVERY 300 LINEAR FEET.
 - PLACE SIGN AT EACH END OF LINEAR TREE PROTECTION AREAS AND 200' ON-CENTER THEREAFTER.
 - FOR TREE PROTECTION AREAS LESS THAN 200' IN PERIMETER, PROVIDE NO LESS THAN ONE SIGN PER PROTECTION AREA.
 - ATTACHED SIGNS SECURELY TO FENCE POSTS AND FABRIC.
 - MAINTAIN TREE PROTECTION FENCE THROUGHOUT DURATION OF PROJECT.
 - ADDITIONAL SIGNS MAY BE REQUIRED BASED ON ACTUAL FIELD CONDITIONS.
 - INSTALL TREE PROTECTION FENCE & SIGNAGE PRIOR TO CALLING FOR THE INITIAL ON-SITE INSPECTION.
 - HOOK FENCING TO PREFORMED CHANNELS ON STEEL POSTS.

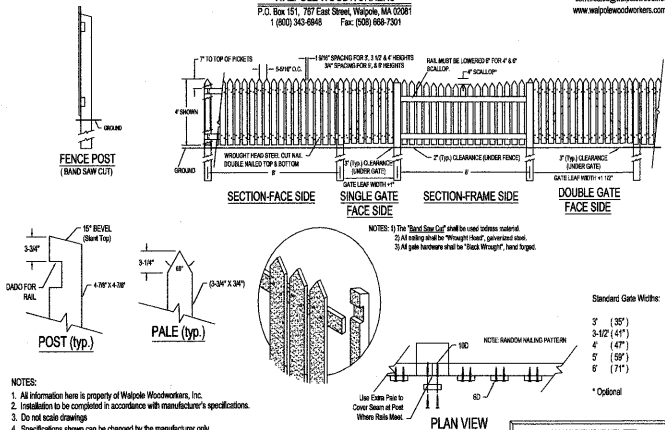
TREE PROTECTION FENCING DETAIL

WALPOLE WOODWORKERS

P.O. Box 151, 787 East Street, Walpole, MA 02081
1 (800) 343-6848 Fax: (508) 688-7301

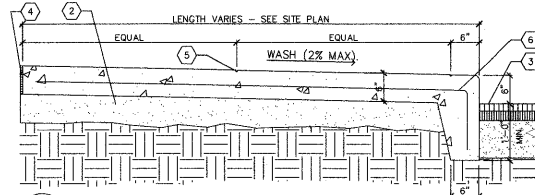
WALPOLE WOODWORKERS
P.O. Box 151, 787 East Street, Walpole, MA 02081
1 (800) 343-6848 Fax: (508) 688-7301

connect@walpolewood.com
www.walpolewoodworkers.com



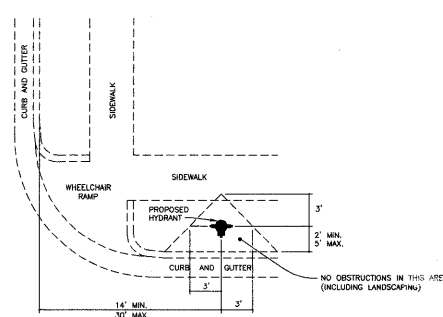
**WALPOLE NELSON GALT PICKET FENCE
WOOD SCREEN FENCE DETAIL**

Typ. 8' Section Length - Northern White Cedar



7 TYPICAL PERIMETER SIDEWALK
3/4" = 1'-0"

- KEYED NOTES:**
- 1 N/A
 - 2 4" COMPACTED AGGREGATE BASE
 - 3 PAVEMENT.
 - 4 COMPRESSIBLE FILLER (3/4" MAXIMUM). CUT BACK AND PROVIDE SEALANT, TYPICAL AT ALL JOINTS WITH FILLER.
 - 5 1/4" TOOLED JOINT
 - 6 6" X 6" #10 W.W.F.

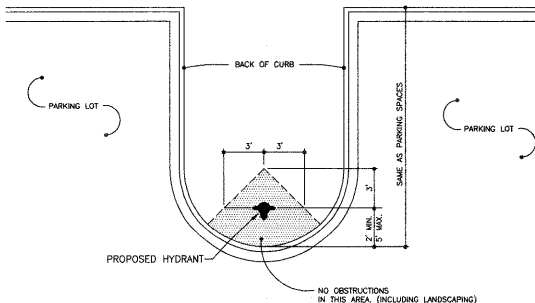


STANDARD HYDRANT LOCATION



EFFECTIVE: 07/01/04

DETAIL No. 06000.07
SHEET 1 OF 2

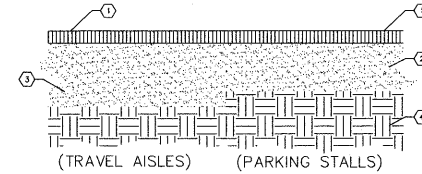


STANDARD HYDRANT LOCATION (FOR PARKING LOT)



EFFECTIVE: 07/01/04

DETAIL No. 06000.07
SHEET 2 OF 2



6 PAVEMENT SECTION DETAIL
1 1/2" = 1'-0"

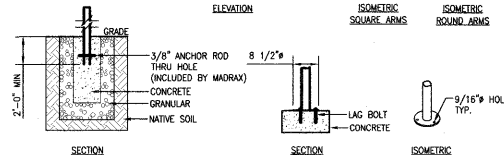
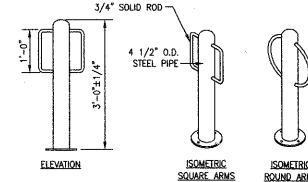
KEYED NOTES:

- 1 2 1/2" 59.58 WEARING SURFACE OVER TACK COAT
- 2 6" (MIN.) CLEAN, GRADED AND COMPACTED STONE (NO SLAG)
- 3 8" (MIN.) CLEAN, GRADED AND COMPACTED STONE (NO SLAG)
- 4 WELL-DRAINED SUB-GRADE (SUB-GRADE TO MODIFIED 95 PROCTOR MIN. COMPACTION)



MADRAX, INC.
A DIVISION OF TRILARY, INC.
2700 LAURA LANE
MIDDLETON, WI
USA, 53562
1 (800) 448-7931
PHONE: (608) 831-9040
FAX: (608) 831-7623
www.thomson-steel.com

- SELECT DESIRED ARMS
- SQUARE ARMS
- ROUND ARMS
- SELECT DESIRED MOUNT
- SURFACE FLANGE MOUNT (SF)
- IN-GROUND MOUNT (IG)



- NOTES:**
1. INSTALLATION TO BE COMPLETED IN ACCORDANCE WITH MANUFACTURER'S SPECIFICATIONS.
 2. DO NOT SCALE DRAWINGS.
 3. CONSULTANT TO SELECT COLOR (FINISH). SEE MANUFACTURER'S SPECIFICATIONS.
 4. SEE SITE PLAN FOR LOCATION OR CONSULT OWNER.
 5. SPECIFICATIONS ARE SUBJECT TO CHANGE WITHOUT NOTICE.
 6. CONTRACTORS NOTE: FOR PRODUCT AND COMPANY INFORMATION VISIT www.CADdetails.com/info REFERENCE NUMBER 302-0028.

BIKE BOLLARDS
2 BIKE, 4 1/2" O.D., SURFACE OR IN-GROUND MOUNT

PROTECTED BY COPYRIGHT - 302-0028 12/03/03

www.caddetails.com

06-SP-012 - A
APPROVED
TOWN OF CARY
Approved by: [Signature] Date: 7-24-06
Planning: [Signature] Date: 7-21-06
Engineering: [Signature] Date: 7-12-06



ELAM, TODD, d'AMBROSIO
URBAN PLANNING • LANDSCAPE ARCHITECTURE
CIVIL ENGINEERING • LAND USE CONSULTING
2880 SLATER RD., SUITE 200
MORRISVILLE, NORTH CAROLINA 27560
OFFICE 919.481.2021
FAX 919.481.2773
EMAIL etd@edpa.com



LEVEY KILDAIRE

DETAIL SHEET

CLIENT:
LRC DEVELOPMENT COMPANY, LLC
1585 FREDRICK BLVD
AKRON, OH 44320
330-253-6958

SURVEYOR:
ELINGBURG LAND SURVEY CO. INC
624 W CHATHAM ST
APEX, NC 27539
919-305-0371

**WALGREENS
STORE# 10541**

Drawn By: JRF
Checked By: BN
Date: 2-10-06
Proj#: 2511009

Revisions
REV 3/31/06 CARY REVIEW COMMENTS
REV 6/30/06 CARY REVIEW COMMENTS
REV 7/11/06 CARY & WALGREENS REV

SHEET

D-9