

INTERIOR
FLOOR PLAN - LIGHTING PLAN
SCALE: 1/8" = 1'-0"

ENTRANCE TOWER LIGHTING DETAIL
SCALE: 1/8" = 1'-0"

NOTES

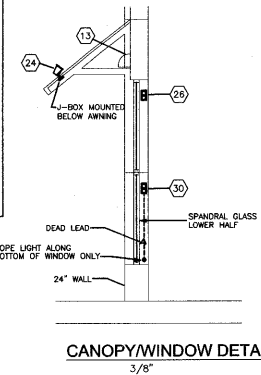
- ALL WORK SHOWN SHALL COMPLY WITH ALL NATIONAL, STATE AND LOCAL CODES, ORDINANCES, ETC.
- SEE LUMINAIRE SCHEDULE AND DETAILS, DRAWING E4.1, FOR INFORMATION.
- SEE DETAILS ON DRAWINGS E2.1A, E2.1B AND E2.1C FOR LIGHTING PANEL "LP-1" AND SIGN PANEL "LP-S" CONTROL SCHEMATIC AND WIRING.
- SEE GENERAL NOTE 3, ON DRAWING E2.1 FOR EMERGENCY AND EXIT LUMINAIRE INFORMATION.
- LUMINAIRES INSTALLED IN CONTINUOUS ROWS SHALL BE ORIGINATED WITH A CONDUIT ROUTED FROM LUMINAIRE TO LUMINAIRE, MOUNTED TO EACH WITH GROUNDING LUD OR SCREW, ALIGNING CONDUIT NOT ACCEPTABLE. LUMINAIRE GROUNDING SHALL BE INSTALLED IN COMPLIANCE WITH NATIONAL ELECTRICAL CODE, ARTICLE 410-21.
- DO NOT CONNECT EMERGENCY LIGHTS OR EXIT SIGNS WITH ANY OTHER LUMINAIRE. PROVIDE ENTIRELY SEPARATE RACEWAY SYSTEM ONLY WHERE REQUIRED, SUCH AS CHICAGO, CONNECT TO NORMAL ELECTRICAL SYSTEM WHERE ACCEPTABLE TO THE LOCAL CODE AUTHORITY.
- "M" LUMINAIRE LENGTHS SHOWN FOR REFERENCE ONLY. LUMINAIRE LENGTHS DEPEND ON THE LOCATION OF F.E. (FINISHED END) SHOWN ON DRAWING E-1 (EXITURE PLAN). PROVIDE 6" SPACE (MAXIMUM) FROM FINISHED END TO LUMINAIRE. DO NOT PROVIDE MORE THAN 6" OF UNLIGHTED AREA AT THE END OF SHELVINGS. OVERLAP "H" LUMINAIRES IF REQUIRED, CONTACT THE PROJECT ARCHITECT FOR A COPY OF DRAWING D-1.
- LIGHTING FOR WALK-IN COOLER/FREEZER UNIT TO BE SWITCHED.
- STOCK AREA LIGHTING TO BE MOUNTED ABOVE AISLE, DO NOT MOUNT ABOVE SHELVING.
- NOT USED.
- CEILING LIGHTS ARE TO BE WIRED TO THE BAR JOIST MEMBERS AT THE DIAGONAL CORNERS.
- CONDUIT SHALL BE ELECTRICAL METALLIC TUBING (EMT), RIGID STEEL (1/2" MIN.), OR WC CABLE WHERE ALLOWED BY CODE.
- PROVIDE EMERGENCY LIGHTING TO MEET THE REQUIRED FOOT CANDLE LEVEL PER LOCAL CODE.
- FOR EMERGENCY UNIT BATTERIES FED FROM CIRCUITS 2 & 6, REFER TO DETAIL 4 DRAWING E2.1C FOR WIRING.

LEGEND

- FLOURESCENT LIGHTING - SEE DRAWING E4.1 FOR LUMINAIRE SCHEDULE AND DETAILS.
- FLOURESCENT NIGHT LIGHT
- OUTLET (WATTAGE AND LOCATION AS NOTED)
- OUTLET, WALL MOUNTED (WATTAGE AND LOCATION AS NOTED)
- EXIT LIGHT: "E" (CEILING MOUNTED WITH PENDANT)
- EXIT LIGHT: "E" (WALL MOUNTED)
- EMERGENCY LIGHT: "E-1" (WALL/COLUMN MOUNTED)
- EMERGENCY LIGHT: "E-2" (CEILING GRID MOUNTED)
- SWITCH
- SWITCH WITH PILOT LIGHT
- SWITCH, 3-WAY
- MOTION SENSOR SWITCH, ARROW INDICATES DIRECTION OF RECEIVER (IF APPLICABLE)
- SPEAKER.

LIGHTING KEYED NOTES

- LUMINAIRE "Q". HEIGHT AS NOTED.
- LUMINAIRE "S". RECESSED CANOPY LUMINAIRE WIRED FROM SIGN PANEL "LP-S".
- NIGHT LIGHTS (TO BE CIRCUITED AND SWITCHED SEPARATELY).
- OCCUPANCY SENSOR. PURCHASE THROUGH NATIONAL ACCOUNT (SEE NOTE III AND SCHEDULE ON DRAWING E4.1). (LAYOUT OF OCCUPANCY SENSORS SHOWN ON DRAWING E4.1 IS FOR LEVITON. ~~SEE DETAIL E2.1C FOR WIRING.~~)
- NOT USED.
- NOT USED.
- OUTLET BOX IN WALL. 36"-10" A.F.F., CONNECT TO CORNICE MOUNTED LUMINAIRE "H". (LENGTH AS NOTED). SEE NOTE 7 AND DETAILS 1 AND 2/E4.1. COORDINATE TO AVOID WALL SHELVING STANDARD.
- RECESSED SLIMLINE LUMINAIRE, SEE LUMINAIRE SCHEDULE, DRAWING E4.1.
- OUTLET BOX ABOVE CEILING FOR RECESSED LUMINAIRE "S".
- NOT USED.
- NOT USED.
- LUMINAIRE "Q", SEE ARCHITECTURAL EXTERIOR ELEVATION DRAWING A4.4 FOR MOUNTING.
- LUMINAIRE "Q" MOUNTED ABOVE WINDOW HEADER. COORDINATE WITH ARCHITECTURAL DRAWING A2.3 & A2.4 FOR FIXTURE LOCATION.
- RECESSED CANOPY MOUNTED EMERGENCY EGRESS LUMINAIRE. SHEET 23 FOR DETAILS.
- WALL MOUNTED, EMERGENCY EGRESS LUMINAIRE "E-3" SEE SHEET E4.1 FOR DETAILS.
- LUMINAIRE "D", MOUNTED ABOVE WALK-IN COOLER/FREEZER UNIT FOR MAINTENANCE OF EQUIPMENT (SWITCH AS SHOWN).
- NOT USED.
- SURFACE MOUNTED POWER PACK "E-4". SEE LUMINAIRE SCHEDULE, DRAWING E4.1
- NOT USED.
- LUMINAIRE "M", WALL MOUNT SURFACE LUMINAIRE MOUNT "E" A.F.F.
- WALL MOUNTED, EMERGENCY EGRESS LUMINAIRE. SHEET 23 FOR DETAILS.
- RECESS MOUNTED "C" LUMINAIRE(S)
- PROVIDE ZOOM OUTLET WITH RECEPTACLE FLUSH MOUNTED IN WINDOW JAMB AT WINDOW HEAD 11'-10" FOR WINDOW SIGN, (1 HR PHOTO AND HALLMARK) CONNECT TO LIGHTING CIRCUIT FROM PANEL "LP-1".
- NOT USED.
- RECESSED DOWNLIGHT, LUMINAIRE TYPE "L", COMPACT FLOURESCENT, SEE LUMINAIRE SCHEDULE, DRAWING E4.1.
- PHARMACY LOCAL OVERRIDE LOW VOLTAGE MOMENTARY SWITCHES, REFER TO DRAWING E2.1B AND E2.1C FOR CONTROL WIRING DETAILS.
- PROVIDE ZOOM OUTLET W/ RECEPTACLE FLUSH MTD IN WINDOW JAMB @ 6'-0" FOR ROPE LIGHT. CONNECT TO LP1-31. PROVIDE ROPE LIGHT AT BOTTOM OF EACH WINDOW (15' OF LAMPS), RUN DEAD LEAD UP TO OUTLET & PLUG IN. ROPE LIGHT = CELESTIAL (OR EQUAL), LAMPS 1' O.C. UNCL. VOLTAGE.



CANOPY/WINDOW DETAIL
3/8"

PROJECT TYPE

DRAWINGS/SPECIFICATIONS BY:	
<input checked="" type="checkbox"/> WALGREENS'	
<input checked="" type="checkbox"/> LANDLORD'S CONSULTANT	
ALL CONSTRUCTION WORK, UNLESS NOTED OTHERWISE, BY:	
<input checked="" type="checkbox"/> WALGREENS' CONTRACTOR	
<input checked="" type="checkbox"/> LANDLORD'S CONTRACTOR (TURNKEY CONSTRUCTION)	
STORE	BUILDING
NEW <input checked="" type="checkbox"/>	NEW <input checked="" type="checkbox"/>
REMODELING <input type="checkbox"/>	EXISTING <input type="checkbox"/>
RELOCATION <input type="checkbox"/>	NEW SHELL ONLY <input type="checkbox"/>
OTHERS <input type="checkbox"/>	

BALACH ASSOCIATES

10034 SOUTHWEST BL.
SPRINGDALE, OHIO 45410 440-672-2941
#800-672-2941

NOTE:

CROSS HATCHING DENOTES ITEMS THAT ARE NOT USED. REFERENCE TO SUCH ITEMS SHALL BE DELETED FROM THE SCOPE OF WORK FOR THIS PROJECT.

06-SP-012 - A
APPROVED
TOWN OF CARY

Approved by *[Signature]* Date 7-20-06
Planning *[Signature]* Date 7-11-06
Engineering *[Signature]* Date 7-12-06

NO.	DATE	BY	DESCRIPTION	CONST
1	06-27-06		REVISIONS PER TOWN OF CARY	

REVISIONS

CERTIFICATION AND SEAL

I HEREBY CERTIFY THAT THIS PLAN AND SPECIFICATION WAS PREPARED BY ME OR UNDER MY DIRECT SUPERVISION AND THAT I AM A DULY REGISTERED ARCHITECT OR ENGINEER UNDER THE LAWS OF THE STATE OF NORTH CAROLINA AS SIGNIFIED BY MY HAND AND SEAL.



STORE NO. 10541

PROJECT NAME
Walgreens
WRENEN DR. / KILDAIRE FARM RD. ARCHITECTS' PROJECT NUMBER: 3705
CARY, NC

DRAWING TITLE

FLOOR PLAN-LIGHTING

CADD PLOT:	SCALE: AS NOTED
VOID PLOT:	DRAWN BY: MMB
RELEASED TO CONSTRUCTION:	DATE: 04-21-06
	REVIEWED BY: LBB

E1.1