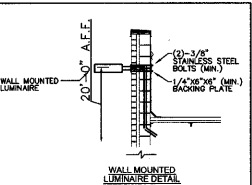


- NOTES**
- ALL WORK SHOWN SHALL COMPLY WITH ALL NATIONAL, STATE AND LOCAL CODES, ORDINANCES, ETC.
 - WALGREENS STORAGE ROOM SHALL PROVIDE (2) 20A, 120V CIRCUIT FROM PANEL 1 TO STORE ROOM FOR PROTECTIVE PARKING SPACES.
 - FURNISH AND INSTALL THE DRIVE ALARM SENSOR WITH CABLE ROUTED BACK TO THE CONTROL PANEL WHICH IS MOUNTED ON THE INTERIOR WALL OF THE DRIVE-THRU WINDOW UNIT. SEE DRAWING ET.2 FOR ELECTRICAL REQUIREMENTS.
 - SEE LUMINAIRE SCHEDULE ON DRAWING EA.1 FOR LUMINAIRE INFORMATION.
 - THE SITE LIGHTING IS BASED ON:
 - MCGRAW-EDISON
 - LITHONIA
 - PROVIDE CROWN ON TOP OF CONCRETE BASE TO COMPLETELY SHED WATER. IF WATER IS NOT PROVIDED, THEN GROUTING WITH A NON-SHRINKING GROUT IS REQUIRED. PROVIDE WEED HOLES FOR DRAINAGE.
 - FAÇADE ACCENT FIXTURE BRACKET SHALL BE 3" SQUARE STRUCTURAL TUBING WELDED TO STEEL MOUNTING PLATE W/2" TUBING AND FRICION FIT STEEL END CAP. BRACKET MOUNTING HARDWARE SHALL INCLUDE (2) 1/2"-13 X 6" STAINLESS STEEL THRU-BOLTS, NUTS AND LOCKWASHERS.
 - THE POLE HOLDING THE "W" SIGN SHALL BE LOCATED AT THE PERIMETER OF THE SITE WITHIN 20 FEET OF THE CENTERLINE OF THE WALGREENS' LOGO SCRIPT SIGN ON THE FAÇADE.
 - GROUP B, DRAWING E2.1A OF CONTROL SCHEDULE CONTROLS LIGHTS REQUIRED TO ILLUMINATE PATH OF TRAVEL FROM THE STORE ENTRANCE TO THE DESIGNATED VEHICULAR PARKING SPACES. ACCORDING TO SPECIFIC LAYOUT SHOWN ON CRITERIA DRAWING E0.1. LIGHTS ON THREE POLES ARE INCLUDED IN GROUP B. SELECTION OF POLES IS BASED ON THE FOLLOWING LOGIC:
 - POLE 1 - CLOSEST TO INTERSECTION
 - POLE 2 - NEXT TO THE CLOSEST TO INTERSECTION ON STREET WITH HIGHER TRAFFIC COUNT (MAIN STREET)
 - POLE 3 - TWO FOLLOWING OPTIONS ARE CONSIDERED FOR POLE LOCATION:
 - 1. ALONG PROPERTY LINE IF PARKING STALLS ARE PRESENT AND NON-RESIDENTIAL
 - 2. ALONG STREET WITH LOWER TRAFFIC COUNT
 - NOTE THAT THE SPECIFIC LIGHTING SCHEME OUTLINED ABOVE APPLIES ONLY TO THE PHOTOGRAPHIC SITE PLAN SHOWN HEREIN. FOR OTHER SITE LAYOUTS PLEASE CONSULT WITH THE WALGREENS PROJECT ARCHITECT TO DETERMINE WHICH POLES SHALL BE PART OF GROUP B. IN THE CASE OF 24 HOUR STORES, POLES DESIGNATED TO BE PART OF GROUP B MUST STILL BE INCLUDED, SINCE THE 24 HOUR DECATATION MIGHT CHANGE.
 - PROVIDE A MINIMUM OF TWO (2) 1/2" DIAMETER PVC CONDUITS TO SEPARATE DATA CABLE AND POWER CIRCUITS. 2-1" SEPARATION SHALL BE MAINTAINED BETWEEN POWER AND DATA CONDUITS. RUN DATA CONDUIT WITH PULL STRINGS TO OFFICE SPACE. SEE DRAWING E1.3 - ELECTRICAL SYSTEM, FOR EXACT LOCATION. ALL CONDUIT AND POWER SHALL BE FURNISHED AND INSTALLED BY THE ELECTRIC CONTRACTOR. EXCISE DATA CABLE FURNISHED AND INSTALLED BY WALGREENS CONTRACTOR.
 - THE SITE LIGHTING POLE SHALL BE USED WITH A WIND SPEED OF:
 - 90 MPH AND BELOW
 - 120 MPH AND BELOW
 - 150 MPH AND BELOW

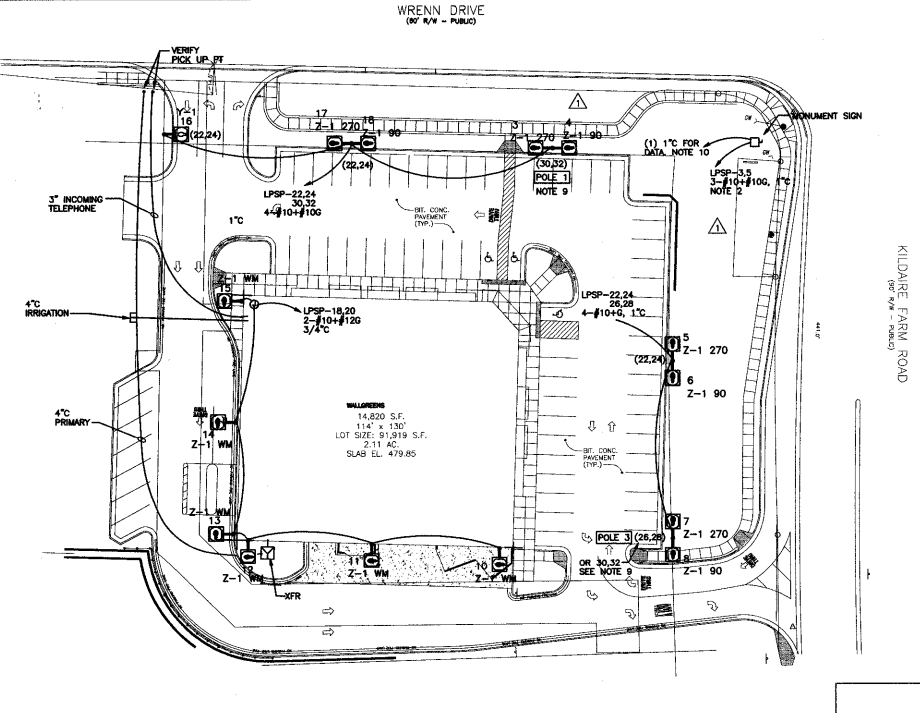
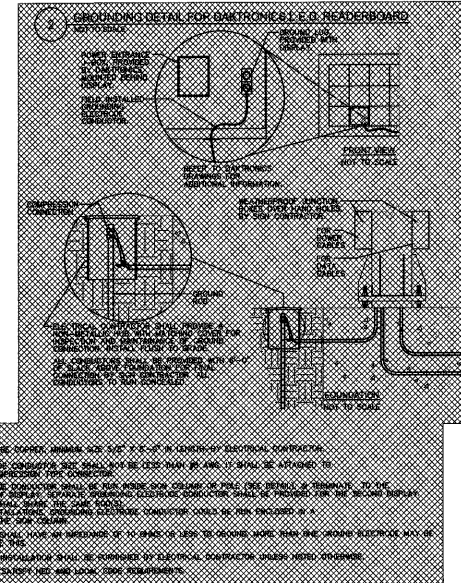
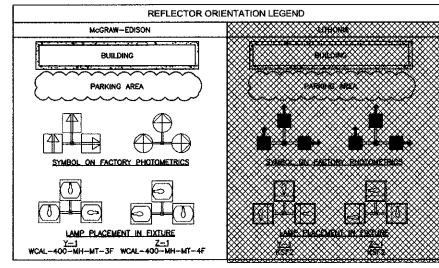


LED READERBOARD PANEL ELECTRICAL DATA

CONTRACTORS	TOP BOARD	DESCRIPTION	WIRING	WIRING NOTES	WIRING TO	WIRING FROM	WIRING TO	WIRING FROM
WALGREENS	20A 120V	20A 120V	20A 120V	20A 120V	20A 120V	20A 120V	20A 120V	20A 120V
WALGREENS	20A 120V	20A 120V	20A 120V	20A 120V	20A 120V	20A 120V	20A 120V	20A 120V
WALGREENS	20A 120V	20A 120V	20A 120V	20A 120V	20A 120V	20A 120V	20A 120V	20A 120V
WALGREENS	20A 120V	20A 120V	20A 120V	20A 120V	20A 120V	20A 120V	20A 120V	20A 120V
WALGREENS	20A 120V	20A 120V	20A 120V	20A 120V	20A 120V	20A 120V	20A 120V	20A 120V

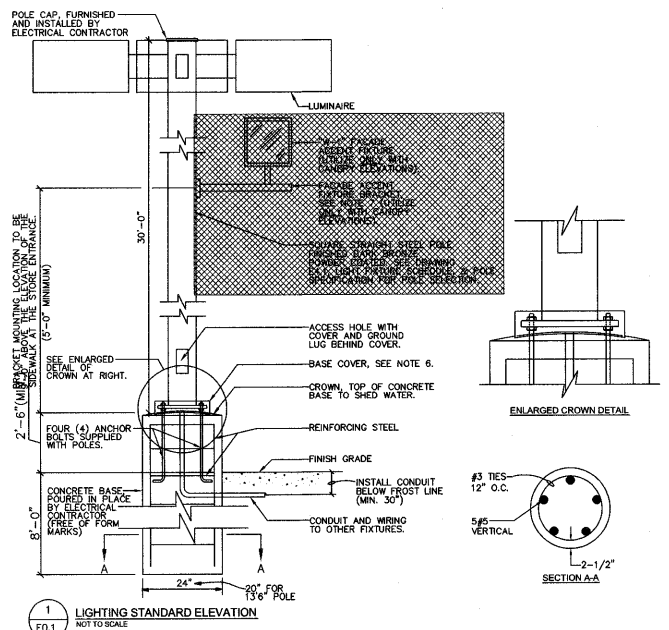
PRIMARY PANEL ELECTRICAL DATA

WALGREENS	WALGREENS	WALGREENS	WALGREENS	WALGREENS	WALGREENS
WALGREENS	WALGREENS	WALGREENS	WALGREENS	WALGREENS	WALGREENS
WALGREENS	WALGREENS	WALGREENS	WALGREENS	WALGREENS	WALGREENS
WALGREENS	WALGREENS	WALGREENS	WALGREENS	WALGREENS	WALGREENS



SITE ELECTRICAL PLAN
SCALE: 1"=30'-0"

VERIFY EXACT LOCATION OF POLE 1, POLE 2 AND POLE 3 WITH WALGREENS PROJECT ARCHITECT SEE NOTE 9



1 LIGHTING STANDARD ELEVATION NOT TO SCALE

James Douglas Evans architect, PLLC
29 Northeast Avenue
Tallahassee, Florida 32310-1893
350 833-9525 voice 350 833-9211 fax

PROJECT TYPE

DRAWINGS/SPECIFICATIONS BY:

WALGREENS

LANDLORD'S CONSULTANT

ALL CONSTRUCTION WORK, UNLESS NOTED OTHERWISE, BY:

WALGREENS CONTRACTOR

LANDLORD'S CONTRACTOR (TURNKEY CONSTRUCTION)

STORE **BUILDING**

NEW REMODELING RELOCATION OTHERS

NEW EXISTING NEW SHELL ONLY

BALACH ASSOCIATES
1064 GUYTON RD. 486-552-3944
TALLAHASSEE, FL 32310 486-552-3944

NOTE:

CROSS HATCHING DENOTES ITEMS THAT ARE NOT USED. REFERENCE TO SUCH ITEMS SHALL BE DELETED FROM THE SCOPE OF WORK FOR THIS PROJECT.

06-SP-012 -A
APPROVED
TOWN OF CARY
Approved by: [Signature] Date: 2-24-06
Planning: [Signature] Date: 2-22-06
Engineering: [Signature] Date: 2-12-06

NO.	DATE	BY	DESCRIPTION	CONST
06-27-06			REVISIONS PER TOWN OF CARY	

REVISIONS

CERTIFICATION AND SEAL

I HEREBY CERTIFY THAT THIS PLAN AND SPECIFICATION WAS PREPARED BY ME OR UNDER MY DIRECT SUPERVISION AND THAT I AM A DULY REGISTERED ARCHITECT OR ENGINEER UNDER THE LAWS OF THE STATE OF NORTH CAROLINA AS SHOWN BY MY HAND AND SEAL.

STATE OF NORTH CAROLINA
REGISTERED PROFESSIONAL ENGINEER
SEAL
020038
LANCE B. BALACH

STORE NO. 10541

PROJECT NAME
Walgreens

WRENN DR. / KILDAIRE FARM RD. ARCHITECT'S PROJECT
CARY, NC NUMBER: 3705

DRAWING TITLE
SITE ELECTRICAL PLAN

CADD PLOT: SCALE: AS NOTED
VOID PLOT: DRAWN BY: MMB
RELEASED TO CONSTRUCTION: DATE: 04-21-06
REVIEWED BY: LLB

E0.1