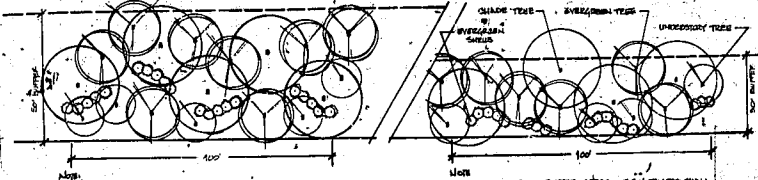


**BUFFER REVEGETATION PLAN**  
SCALE: 1" = 30'-0"



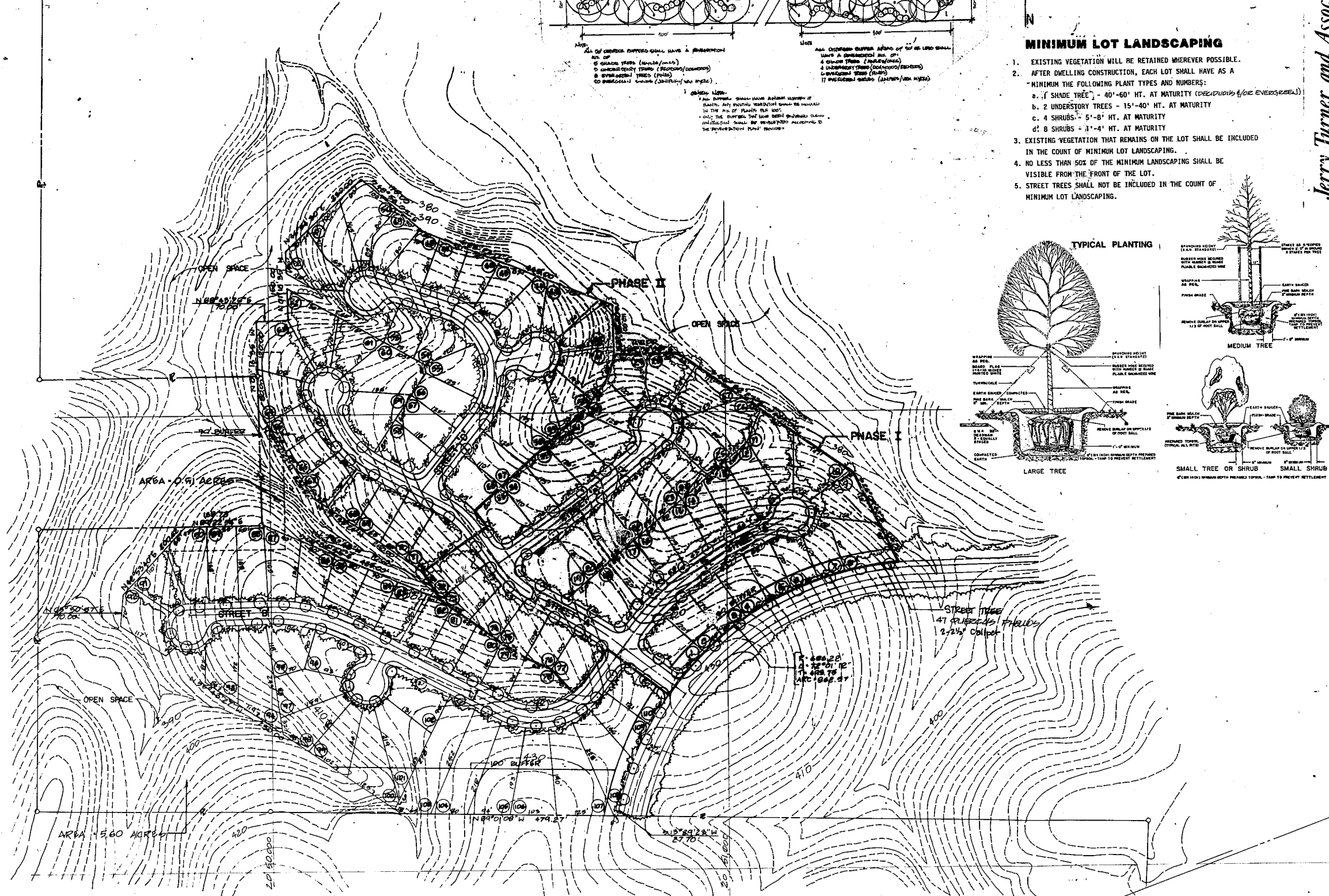
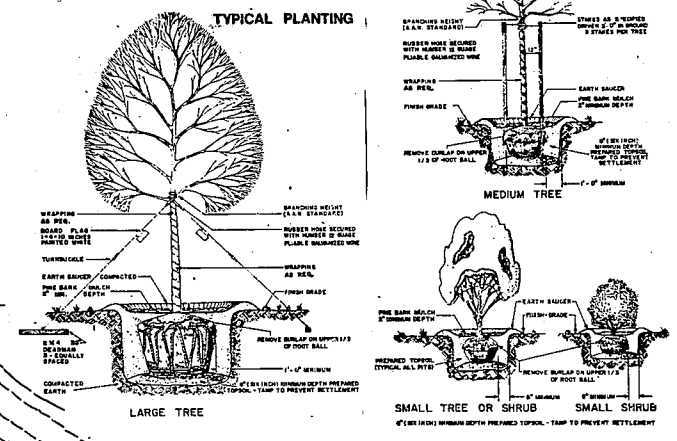
ALL OF THESE BUFFER ZONES SHALL HAVE A MINIMUM OF 10% OPEN SPACE (MINIMUM 10' WIDE) AND BE PLANTED WITH THE FOLLOWING VEGETATION:

ALL BUFFER ZONES SHALL HAVE A MINIMUM OF 10% OPEN SPACE (MINIMUM 10' WIDE) AND BE PLANTED WITH THE FOLLOWING VEGETATION:

**MINIMUM LOT LANDSCAPING**

- EXISTING VEGETATION WILL BE RETAINED WHEREVER POSSIBLE.
- AFTER DWELLING CONSTRUCTION, EACH LOT SHALL HAVE AS A MINIMUM THE FOLLOWING PLANT TYPES AND NUMBERS:
  - a. 1 SHADE TREE - 40'-60' HT. AT MATURITY (EXCEPT FOR EVERGREENS)
  - b. 2 UNDERSTORY TREES - 15'-40' HT. AT MATURITY
  - c. 4 SHRUBS - 5'-8' HT. AT MATURITY
  - d. 8 SHRUBS - 1'-4' HT. AT MATURITY
- EXISTING VEGETATION THAT REMAINS ON THE LOT SHALL BE INCLUDED IN THE COUNT OF MINIMUM LOT LANDSCAPING.
- NO LESS THAN 50% OF THE MINIMUM LANDSCAPING SHALL BE VISIBLE FROM THE FRONT OF THE LOT.
- SMALL TREES SHALL NOT BE INCLUDED IN THE COUNT OF MINIMUM LOT LANDSCAPING.

**TYPICAL PLANTING**



**Jerry Turner and Associates, Inc.**  
landscape architecture • planning • environmental design  
905 Jones Franklin Road • Raleigh, N.C. 27606 • 919-851-7150

**Dowberry & Davis**  
Engineers Architects Environmental Scientists

LANDSCAPING PLAN

Scale	1" = 100'
Sheet	32,000
<b>L2</b>	
Date	
File Number	2-24