

CURVE	RADIUS	DELTA	ARC	TAN	CHORD
CURVE#1	571.50'	10°00'00"	99.75'	50.00'	99.62'
CURVE#2	146.58'	28°30'00"	97.93'	50.00'	96.92'
CURVE#3	163.47'	27°30'00"	78.46'	40.00'	77.71'
CURVE#4	199.19'	60°00'00"	208.59'	118.00'	199.19'

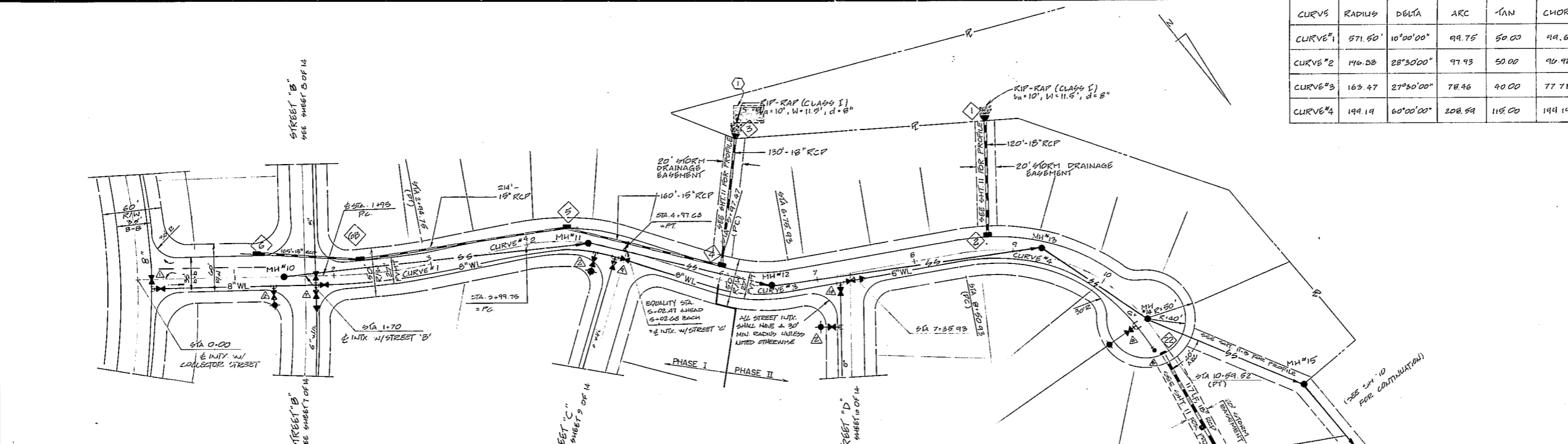


Dewberry & Davis
 Engineers Architects Planners Surveyors
 Twin Forks Office Park 5922 Six Forks Road
 Raleigh, North Carolina 27609 919-847-0418

TRACT R-10
 PARKWAY P.U.D. CARY, N.C.
 RICHLAND PROPERTIES, INC. OWNERS

PLAN AND PROFILE
 STREET 'A'
 PHASE I & II

Vertical Scale
 1" = 5'
 Horizontal Scale
 1" = 50'
 Sheet
6 of 14
 Date
 6/27/1960
 File Number
 5



- HAZARD KEYNOTES**
- ▲ 8" x 8" TEE
 - ▲ 2" x 8" GATE VALVES
 - ▲ FIRE HYDRANT ASSEMBLY
 - ▲ 8" x 8" TEE
 - ▲ 8" GATE VALVE
 - ▲ FIRE HYDRANT
 - ▲ 8" x 8" CROSS
 - ▲ 1" x 8" G.V.
 - ▲ 2" x 8" G.V.
 - ▲ 6" x 4" REDUCER
 - ▲ 6" x 4" REDUCER
 - ▲ FIRE HYDRANT ASSEMBLY
 - ▲ 8" x 8" TEE
 - ▲ 8" GATE VALVE
 - ▲ 8" x 8" REDUCER
 - ▲ FIRE HYDRANT
 - ▲ STD. 8" BLOW-OFF ASSEMBLY
- STORM SEWER TABULATIONS**
- 1 18" RCP STA. 2+99.75 INV. 417.50
 - 2 STD. CATCH BASIN (STD. "B.O.S") STA. 3+71.25 INV. 412.50 (15') INV. OUT. 412.50 (15')
 - 3 18" RCP STA. 4+97.25 INV. 401.50
 - 4 STD. CATCH BASIN STA. 5+97.47, 13.7' LT. TOP = 416.02 INV. IN = 409.90 INV. OUT. 406.70
 - 5 STD. CATCH BASIN STA. 4+40.00, 13.7' LT. TOP = 417.58 INV. IN = 412.50 (15') INV. OUT. 412.50 (15')
 - 6 STD. CATCH BASIN STA. 1+24.00, 13.7' LT. TOP = 420.55 INV. IN = 409.90 INV. OUT. 406.70
 - 6D STD. CATCH BASIN STA. 2+30.00, 13.7' LT. TOP = 420.55 INV. IN = 415.56 INV. OUT. 415.56

STREET 'A' (50' R/W)
 1" = 50' HORIZ. 1" = 5' VERT.
 @ 75' RIGHT @ 75' LEFT

- STORM SEWER TABULATIONS (CONT)**
- 7 18" RCP INV. 391.60
 - 8 STD. CATCH BASIN T/C STATION = 11+09 TOP ELEV. = 404.39 INV. OUT. = 394.00

REVIEW PRINTS
 DO NOT USE FOR CONSTRUCTION

DWN. CK'D. APP.

