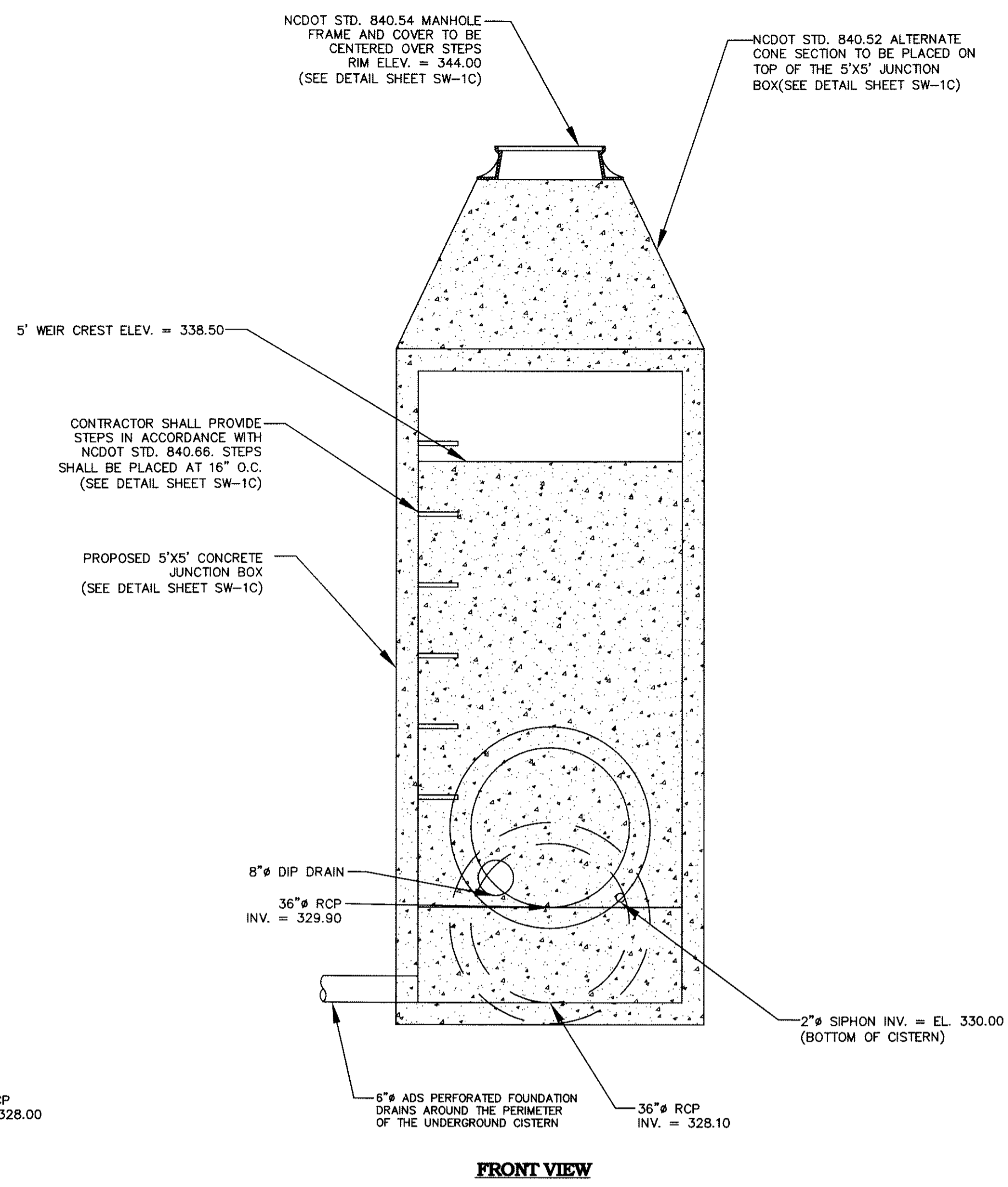
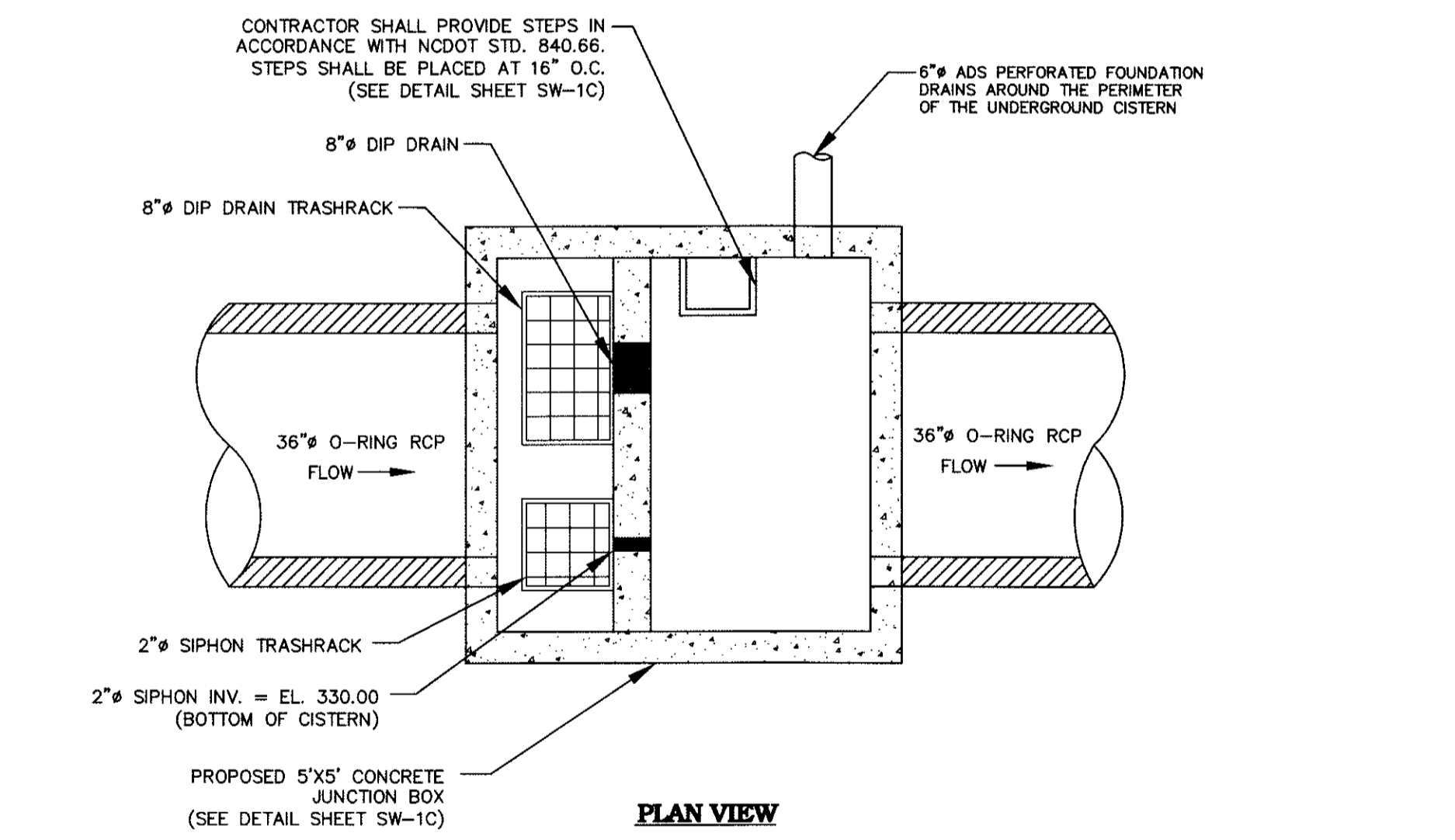


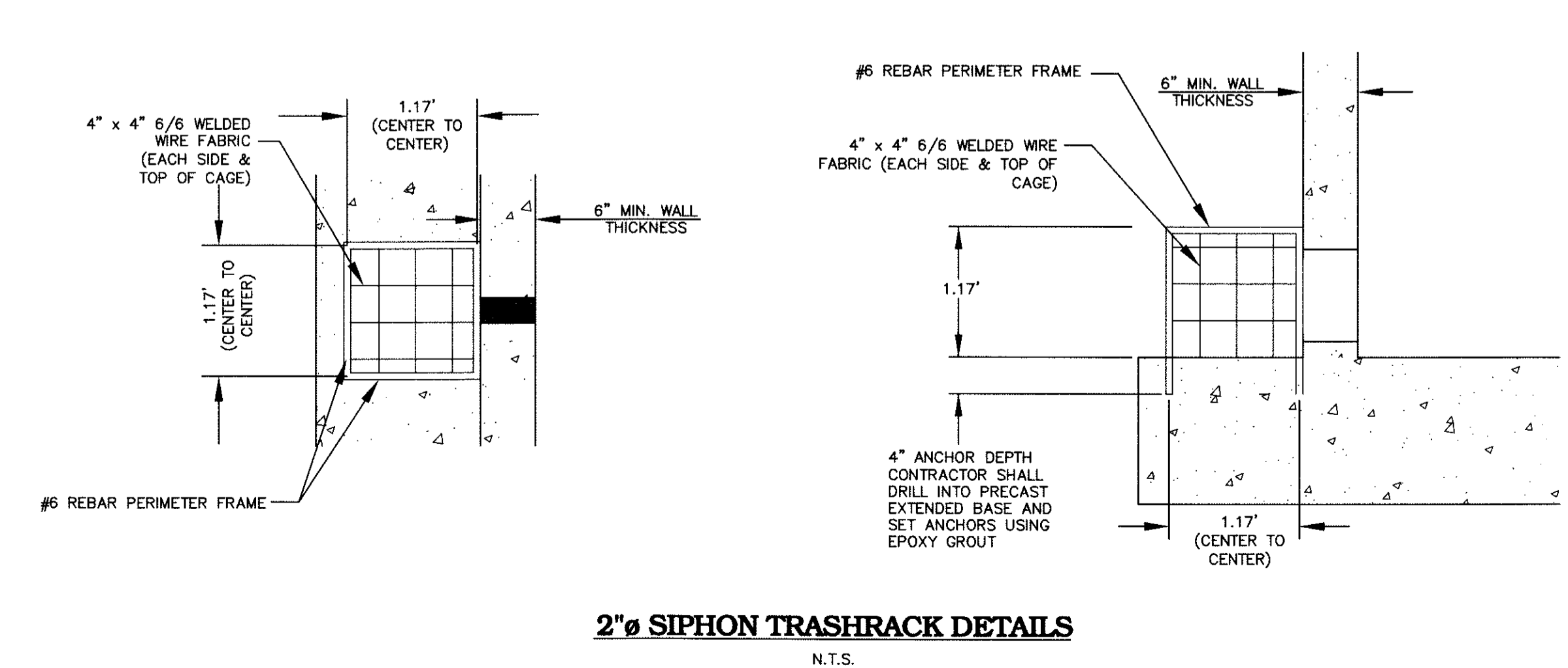
SIDE VIEW



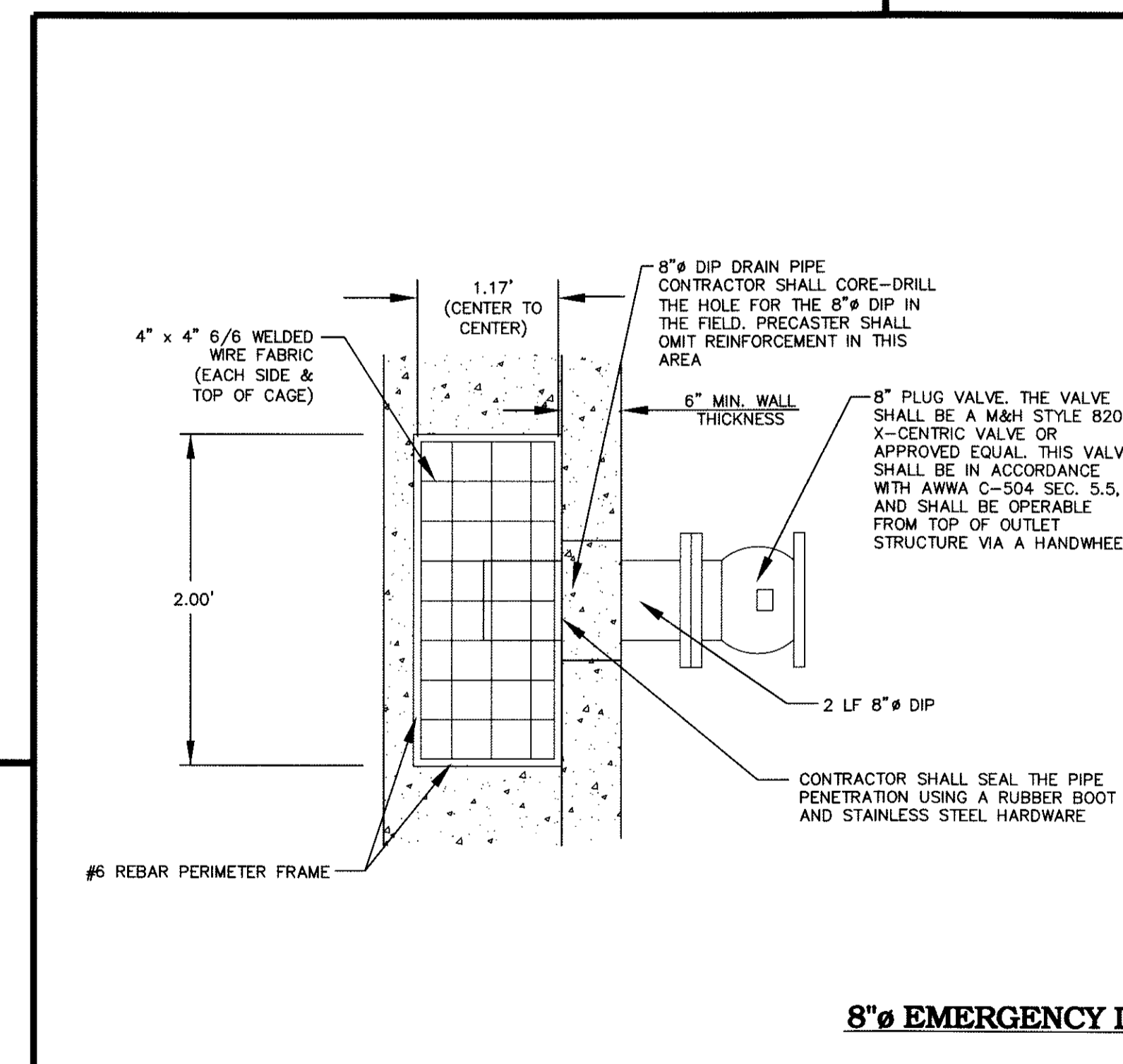
FRONT VIEW



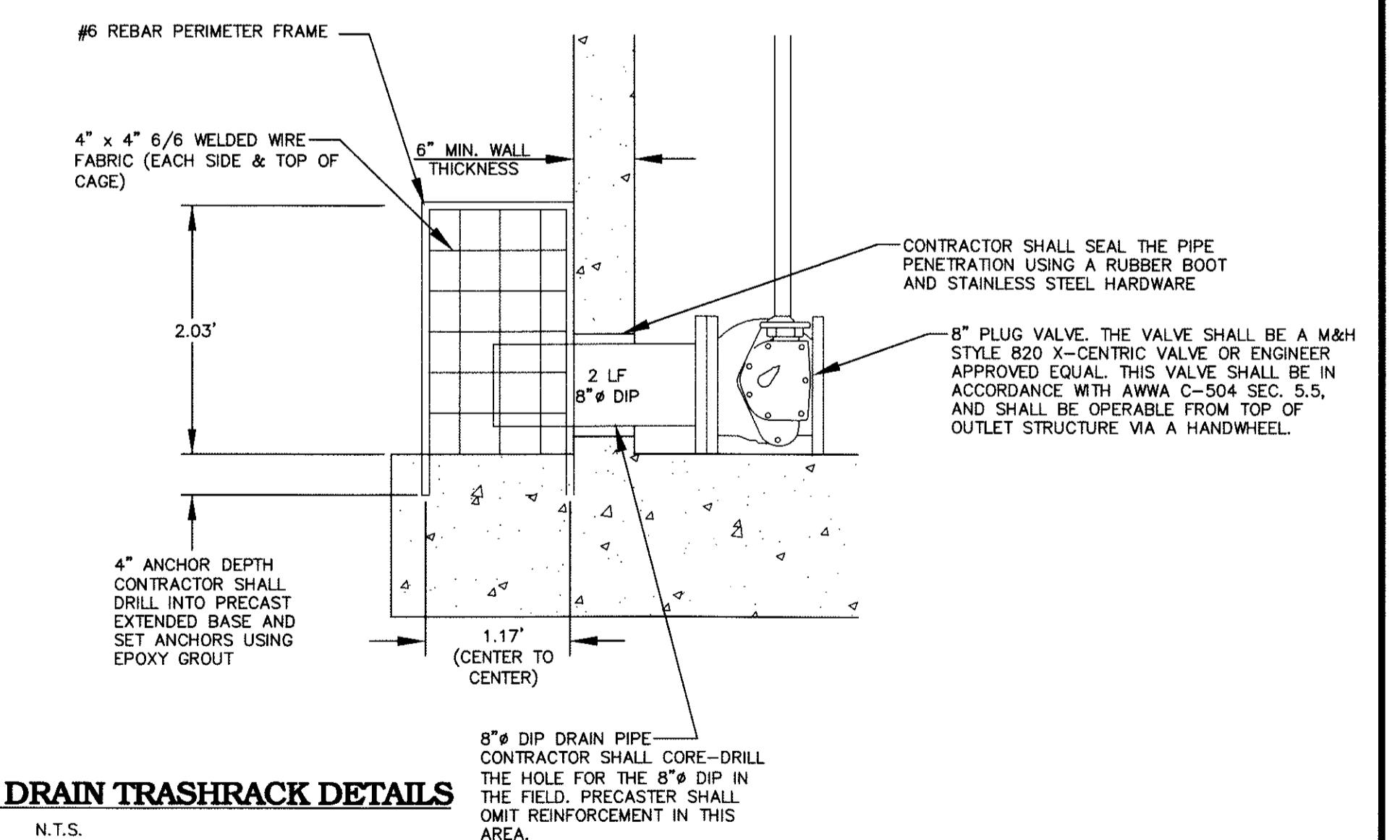
PLAN VIEW



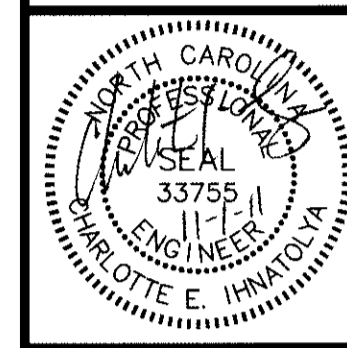
2\"/>



8\"/>



BIORETENTION AREA CROSS SECTION
N.T.S.



REVISIONS:

1	
---	--

DEVELOPER:
RAVIN PARTNERS, LLC
5020 WESTON PARKWAY, SUITE 300
CARY, NORTH CAROLINA 27513
JEFF FURMAN (919) 256-3027

LOFTS AT WESTON LAKESIDE
CONSTRUCTION DRAWINGS
CARY, NORTH CAROLINA
STORMWATER MANAGEMENT FACILITY #1 DETAILS

PROJECT NO.	RAV-11000
FILENAME	RAV11000-SW2
DESIGNED BY	BJ
DRAWN BY	BJ
SCALE	NTS
DATE	10-12-2011
SHEET NO.	SW-1D

ALL CONSTRUCTION MUST BE PERFORMED IN ACCORDANCE WITH CURRENT TOWN OF CARY STANDARD SPECIFICATIONS AND DETAILS.

11-SP-037
HTE#: 12-0045
APPROVED BY THE TOWN OF CARY
DEVELOPMENT REVIEW COMMITTEE

Planner: *KAH* Date: 11/10/2011

I:\Projects\RAV\RAV-11000\Storm\Current\Drawings\RAV11000-SW1.dwg, 11/10/2011 11:05:15 AM, thad@ecoys.11