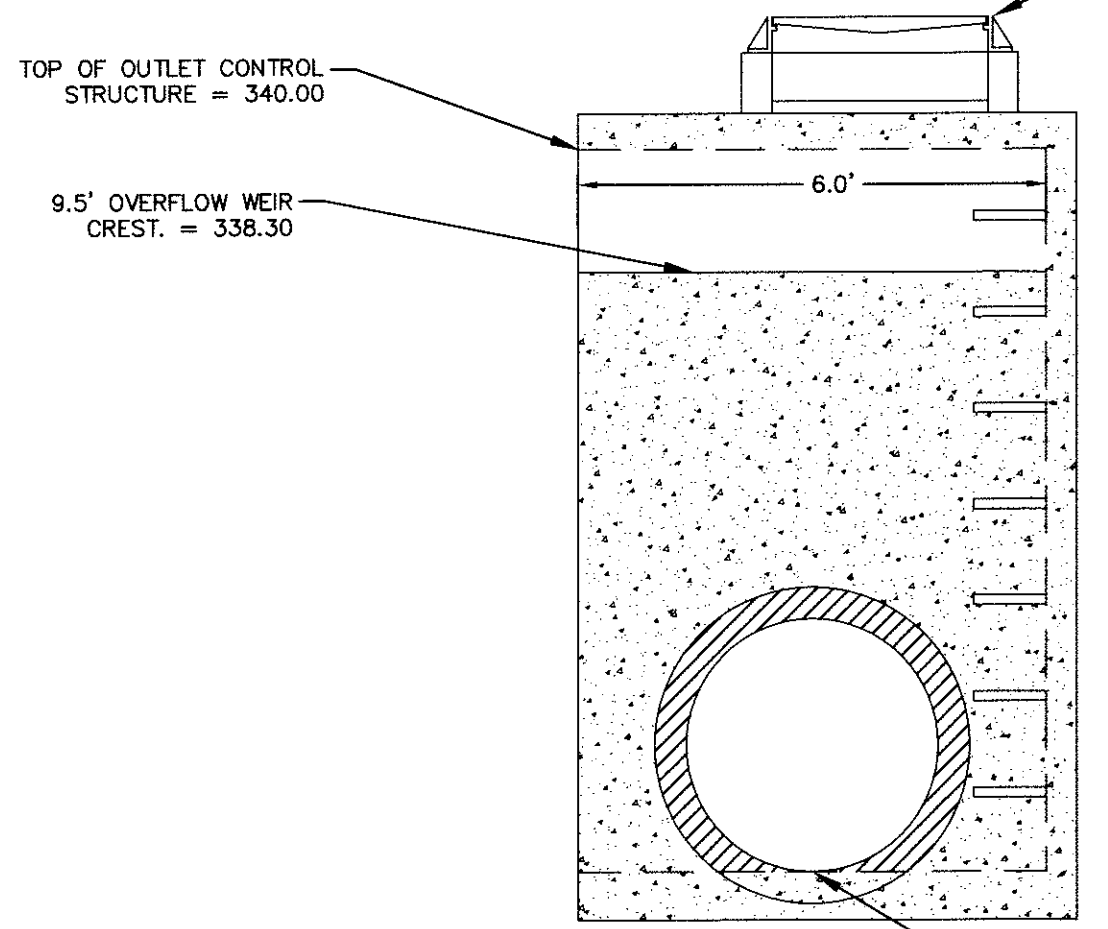
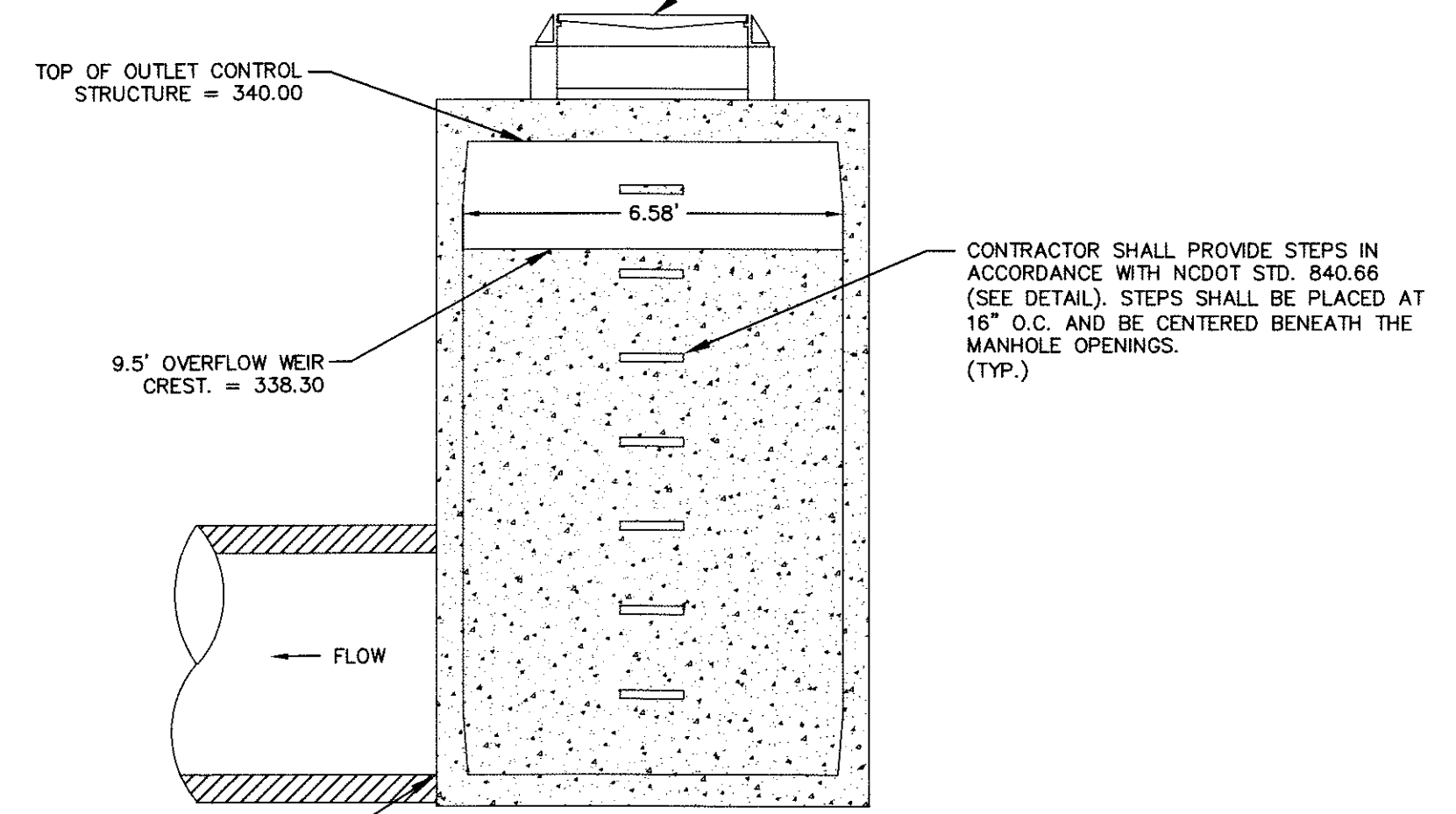


36" RING AND COVER
EAST JORDAN IRON WORKS
V-1600-5 OR APPROVED EQUAL



36" RING AND COVER
EAST JORDAN IRON WORKS
V-1600-5 OR APPROVED EQUAL

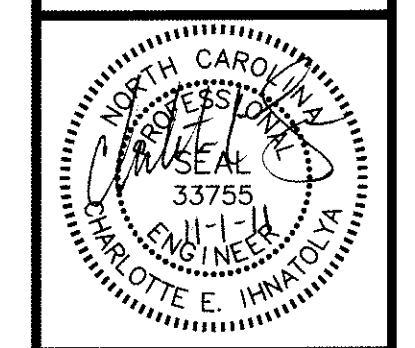


OUTLET CONTROL STRUCTURE DETAIL
N.T.S.

ALL CONSTRUCTION MUST BE PERFORMED IN ACCORDANCE WITH CURRENT TOWN OF CARY STANDARD SPECIFICATIONS AND DETAILS.

11-SP-037
HTE#: 12-0045
APPROVED BY THE TOWN OF CARY DEVELOPMENT REVIEW COMMITTEE
Planner *KAW* Date *11/10/2011*

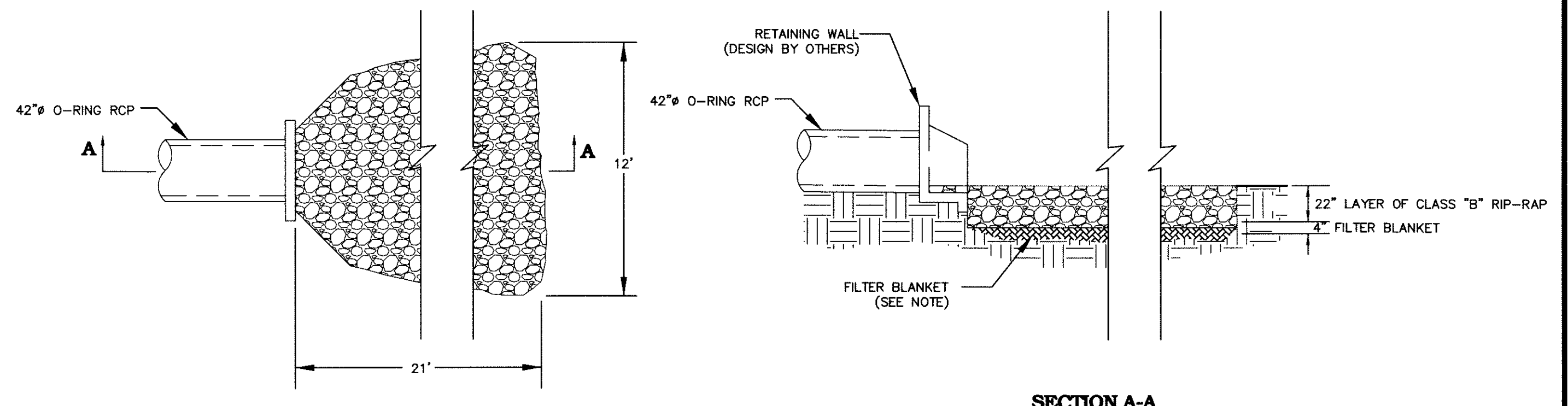
EcoEngineering
A division of The John R. McAdams Company, Inc.
ENGINEERS • PLANNERS • SURVEYORS • ENVIRONMENTAL
RESEARCH TRIANGLE PARK • CHARLOTTE
2905 Meridian Parkway, Durham, NC 27713
800-733-5646 • www.jrmaadams.com • License No. C-0593



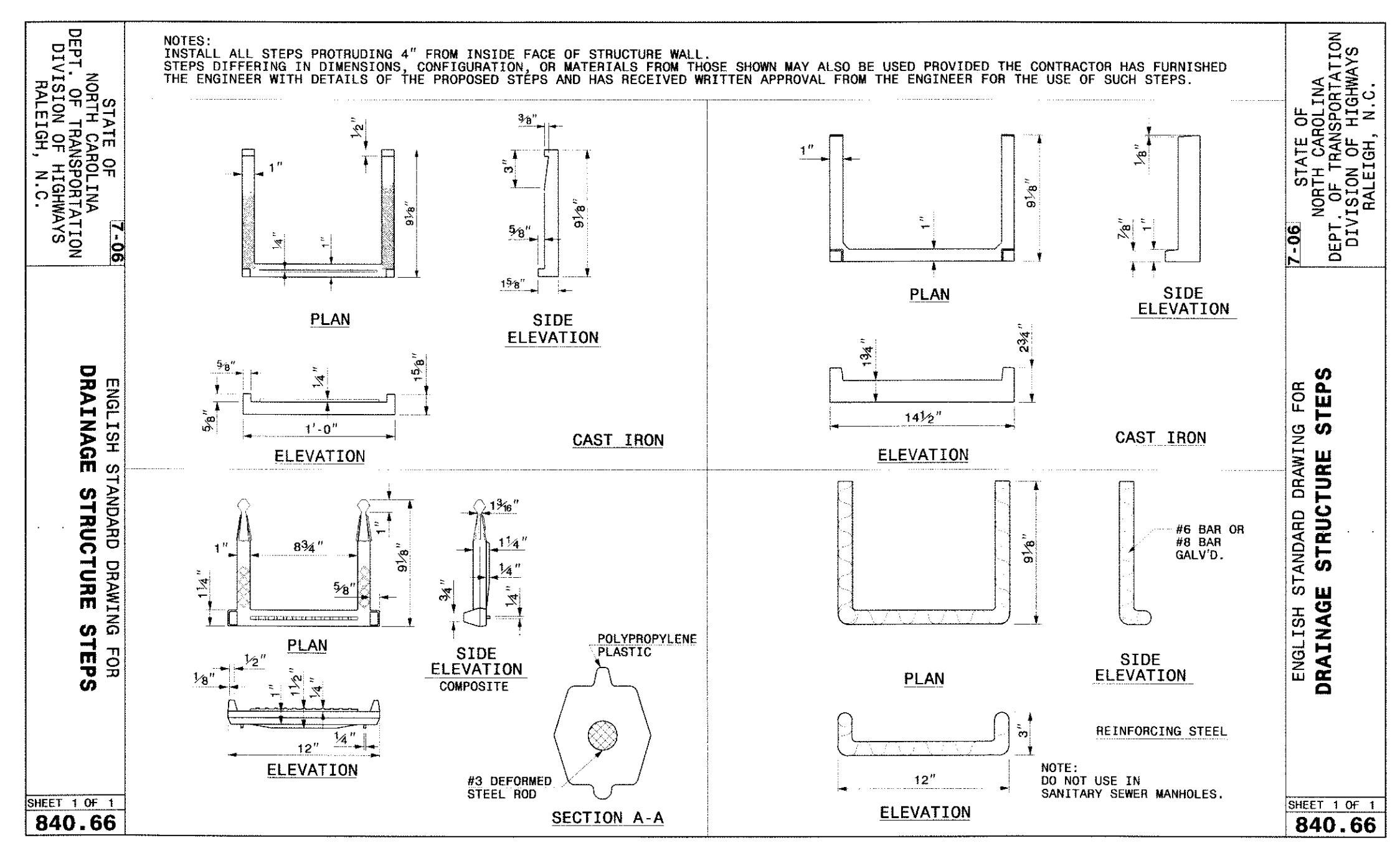
REVISIONS:

OWNER:
RAVIN PARTNERS, LLC
5020 WESTON PARKWAY, SUITE 300
CARY, NORTH CAROLINA 27513
JEFF FURMAN (919) 256-3027

- NOTES:
- A FILTER BLANKET IS TO BE INSTALLED BETWEEN THE RIPRAP AND SOIL FOUNDATION. THE FILTER BLANKET WILL CONSIST OF A MINIMUM 4" THICK LAYER OF STONE (NCDOT #57) UNDERLAIN WITH MIRAFI FILTER WEAVE 700 OR APPROVED EQUIVALENT



42" OUTLET BARREL VELOCITY DISSIPATOR
N.T.S.



MAINTENANCE ACCESS STEPS
N.T.S.

LOFTS AT WESTON LAKESIDE
CONSTRUCTION DRAWINGS
CARY, NORTH CAROLINA
STORMWATER MANAGEMENT FACILITY #2 DETAILS

PROJECT NO. RAV-11000
FILENAME: RAV11000-SW2
DESIGNED BY: BI
DRAWN BY: BI
SCALE: NTS
DATE: 10-12-2011
SHEET NO. **SW-2C**

McADAMS