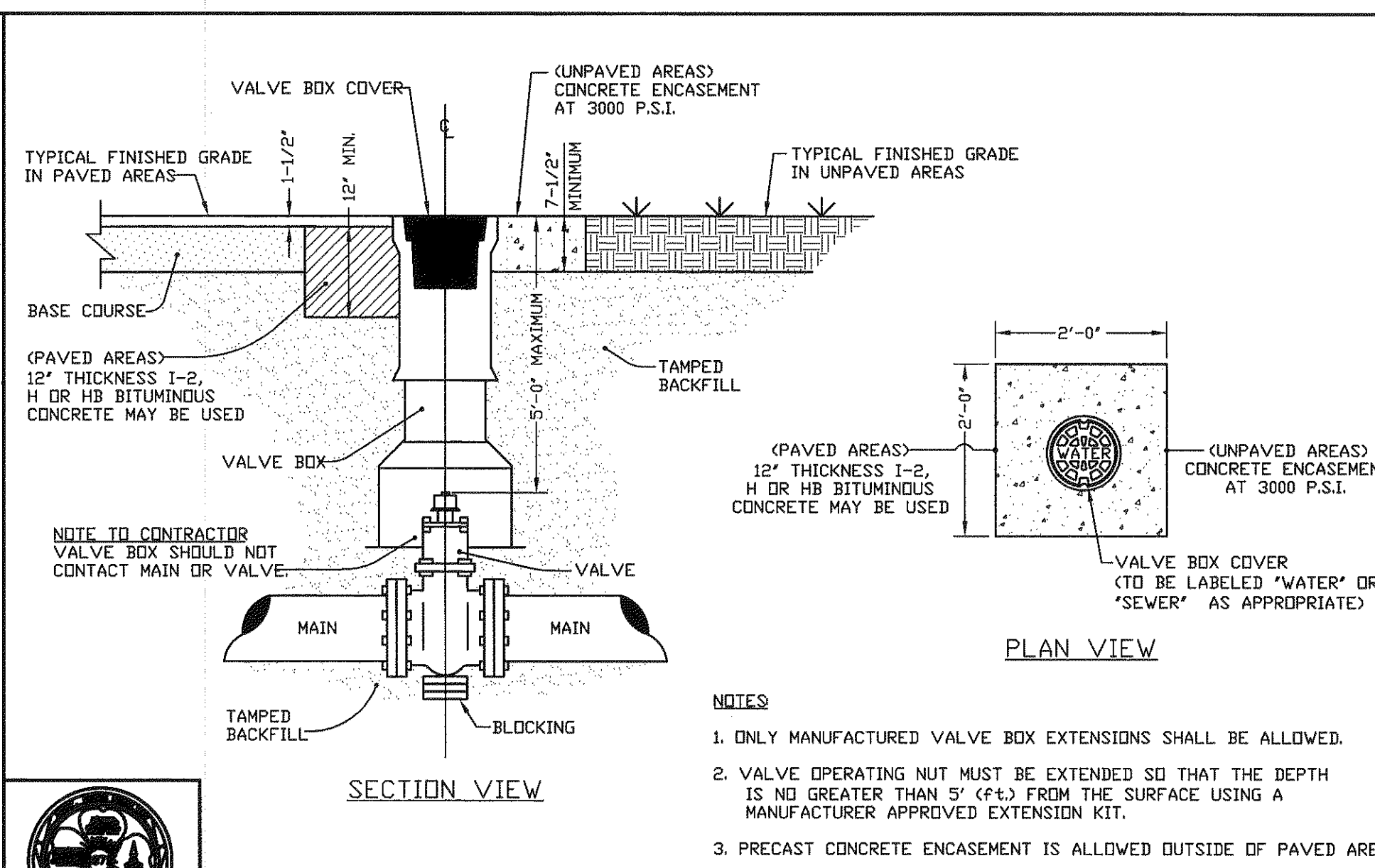
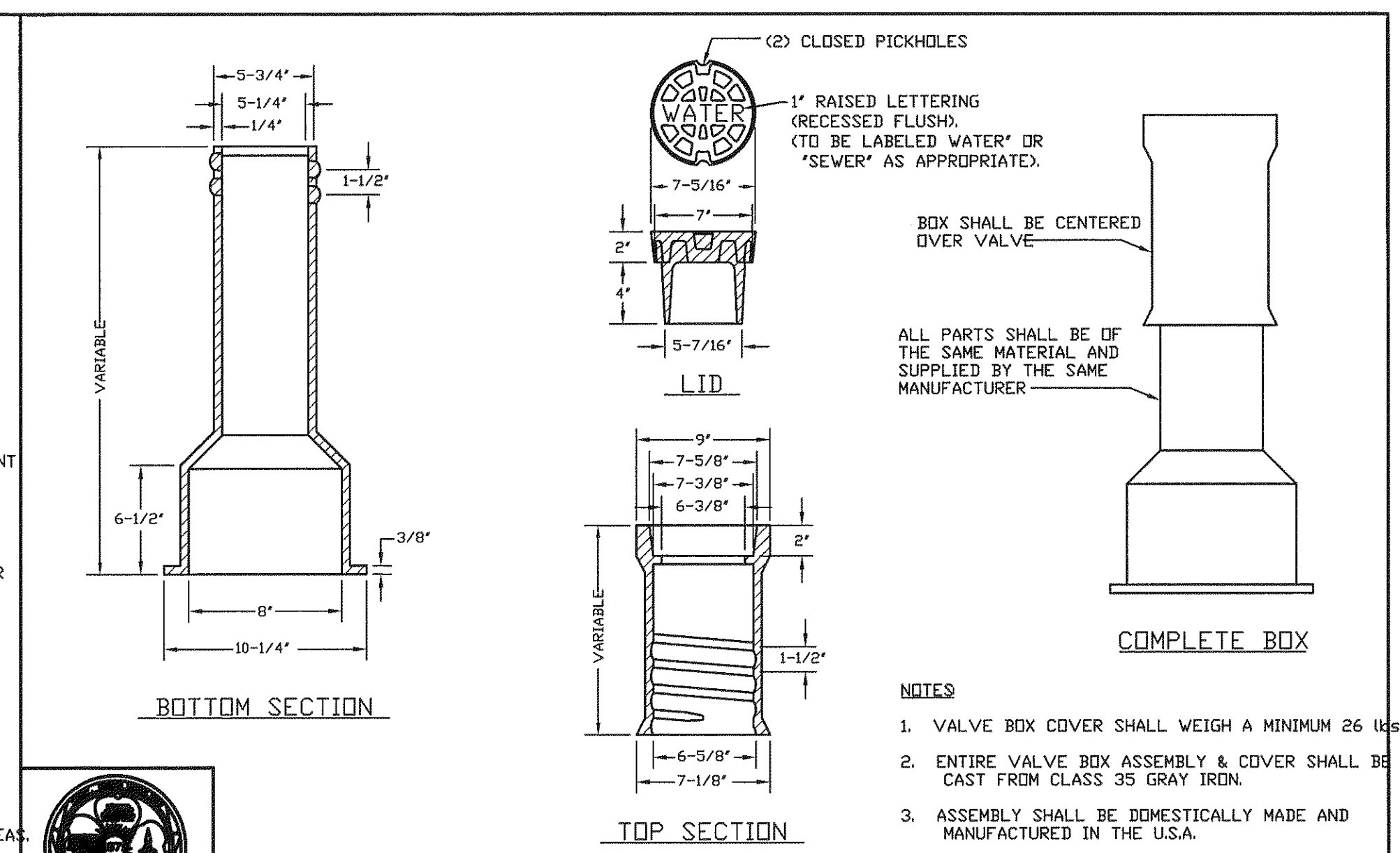


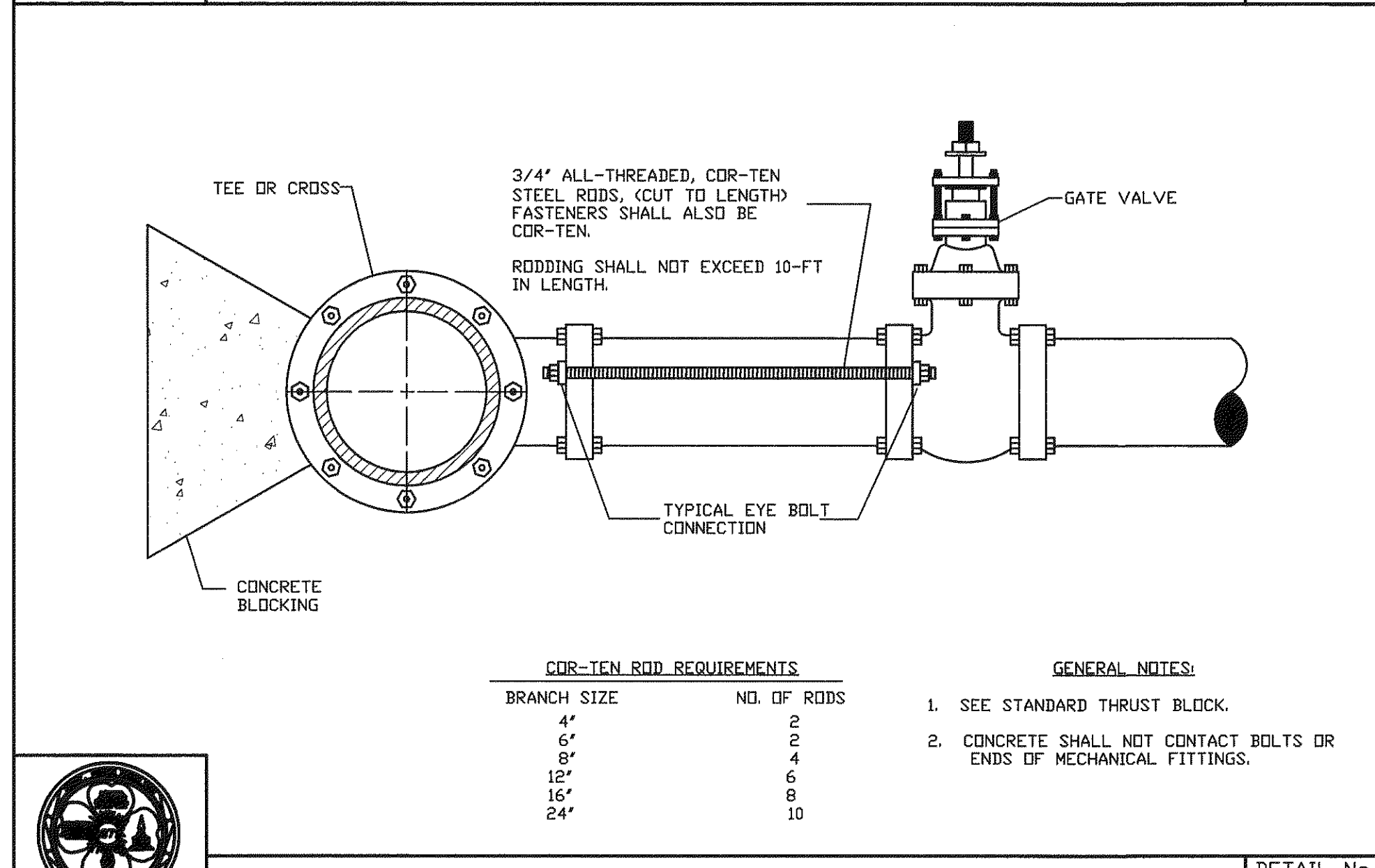
STANDARD HYDRANT INSTALLATION
 DETAIL No. 06000.06
 SHEET 1 OF 1
 EFFECTIVE: 09/08/05



STANDARD VALVE BOX INSTALLATION
 DETAIL No. 06000.08
 SHEET 1 OF 2
 EFFECTIVE: 07/01/04



STANDARD VALVE BOX INSTALLATION
 DETAIL No. 06000.08
 SHEET 2 OF 2
 EFFECTIVE: 07/01/04



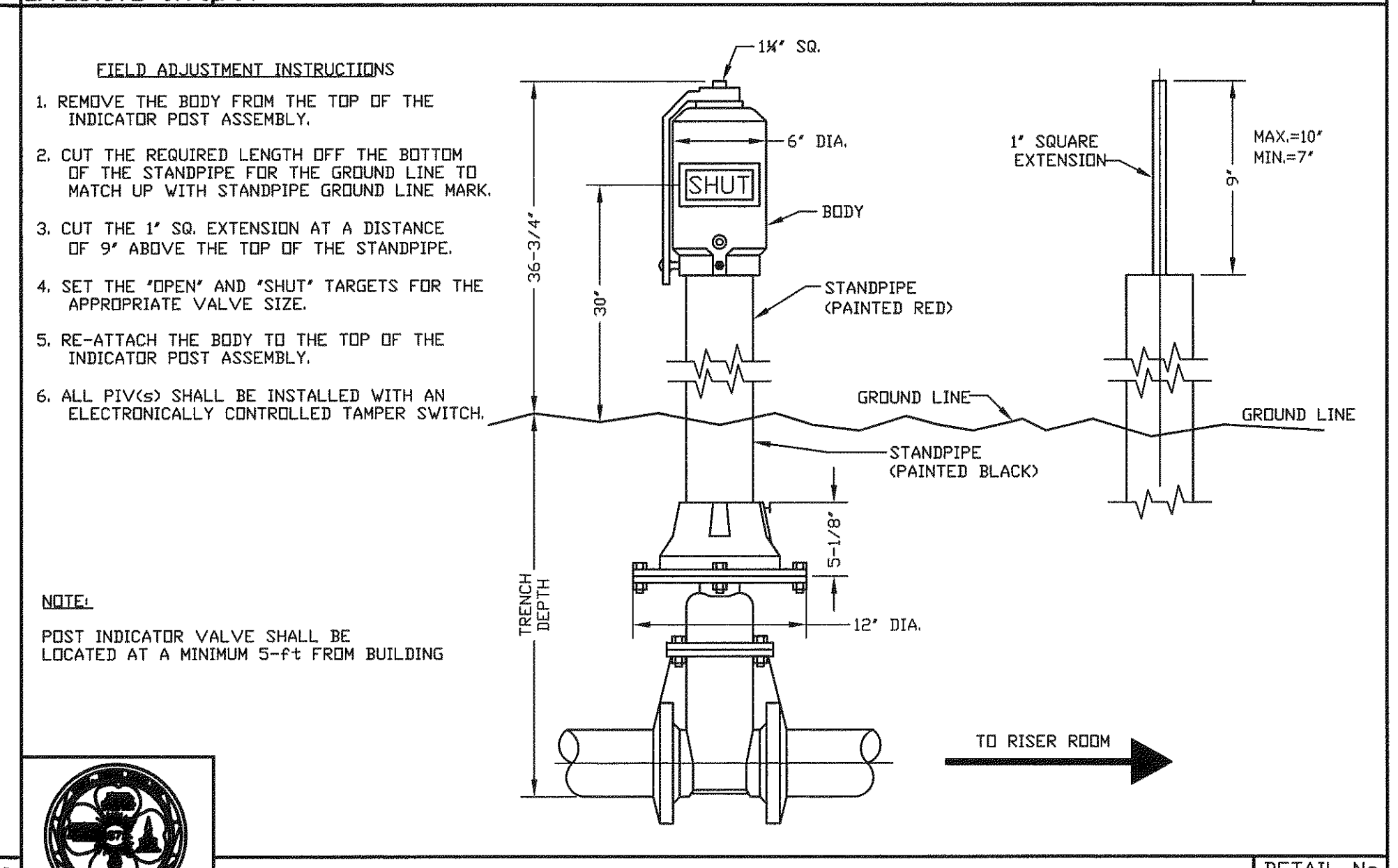
STANDARD VALVE RODDING
 DETAIL No. 06000.09
 SHEET 1 OF 1
 EFFECTIVE: 09/08/05

MINIMUM CONCRETE BLOCKING (C.Y.) *

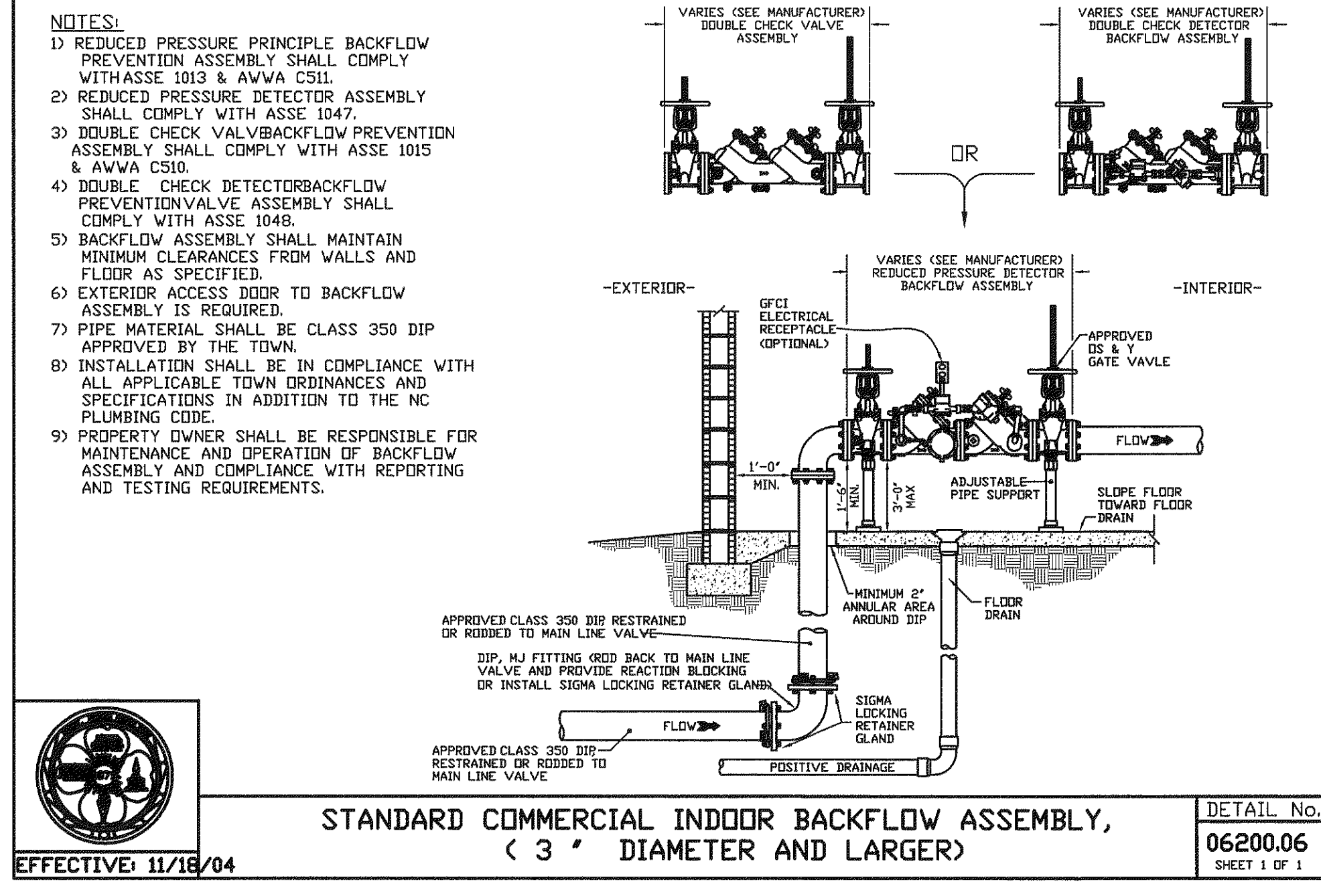
NOM. PIPE DIA. IN.	TEES & DEAD ENDS	90° BEND	45° BEND	22-1/2° BEND	11-1/4° BEND
4	1/3	1/3	1/3	1/3	1/3
6	1/3	1/3	1/3	1/3	1/3
8	1/3	1/2	1/3	1/3	1/3
10	2/3	3/4	1/2	1/3	1/3
12	3/4	1.0	2/3	1/3	1/3
14	1.0	1-1/2	3/4	1/2	1/3
16	1-1/3	2.0	1.0	1/2	1/3
18	1-2/3	2-1/3	1-1/3	2/3	1/3
20	2.0	3.0	1-2/3	3/4	1/2
24	3.0	4-1/3	2-1/3	1-1/3	2/3

* CONCRETE SHALL BE 3000 P.S.I. MIX.

STANDARD REACTION BLOCKING
 DETAIL No. 06000.13
 SHEET 1 OF 1
 EFFECTIVE: 07/01/04



STANDARD TAPPING SLEEVE & POST INDICATOR VALVE
 DETAIL No. 06000.19
 SHEET 1 OF 1
 EFFECTIVE: 09/08/05



**STANDARD COMMERCIAL INDOOR BACKFLOW ASSEMBLY, (3\"/>
 DETAIL No. 06200.06
 SHEET 1 OF 1
 EFFECTIVE: 11/18/04**

FIELD ADJUSTMENT INSTRUCTIONS

- REMOVE THE BODY FROM THE TOP OF THE INDICATOR POST ASSEMBLY.
- CUT THE REQUIRED LENGTH OFF THE BOTTOM OF THE STANDPIPE FOR THE GROUND LINE TO MATCH UP WITH STANDPIPE GROUND LINE MARK.
- CUT THE 1\"/>

NOTE: POST INDICATOR VALVE SHALL BE LOCATED AT A MINIMUM 5'-0\"/>

STANDARD REACTION BLOCKING
 DETAIL No. 06000.13
 SHEET 1 OF 1
 EFFECTIVE: 07/01/04

Cary Project Number 07-SP-105

APPROVED TOWN OF CARY

Approved by DRC Date 10/8/07
 Planning KAH Date 10/26/07
 Engineering TS Date 10-26-07

WITHERS & RAVENEL
 ENGINEERS | PLANNERS | SURVEYORS
 111 MacKenan Drive Cary, North Carolina 27511 tel: 919-469-3340 fax: 919-467-6008 www.wITHERSRAVENEL.com

K:\07-07-0880\070888-Lord Corporation Fireline\070888-SHEET 2.0.dwg - Tuesday, October 23, 2007 8:38:25 AM - LEE WEAVER