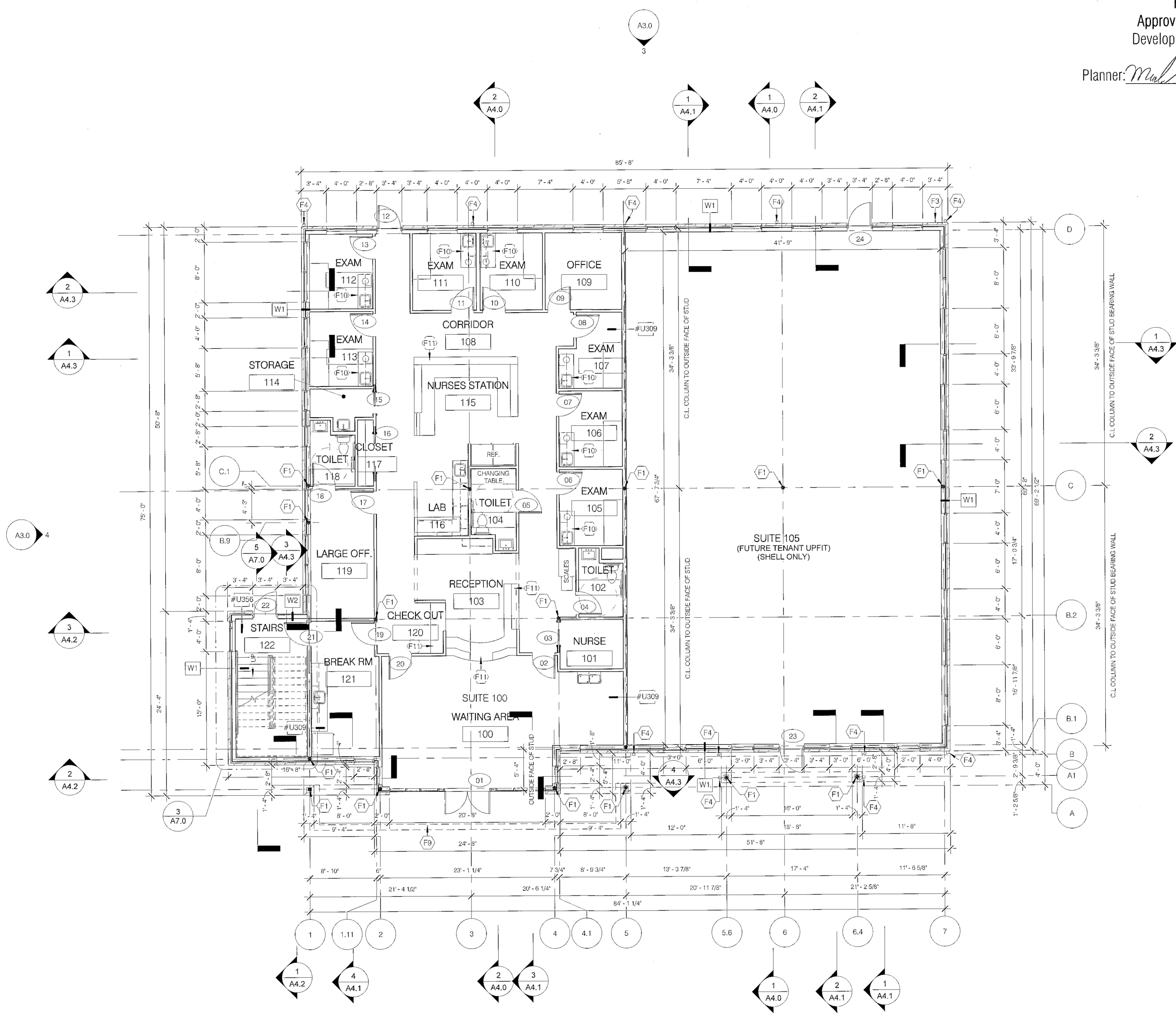




MARUTHI PEDIATRICS
110 LATNER CT., CARY,
NORTH CAROLINA

14-SP-039
HTE#: 14-1613
Approved by the Town of Cary
Development Review Committee
Planner: *Muller* Date: 11-5-14



SEE A9.0 & A10.0 SERIES FOR ENLARGED PLANS, INTERIOR DIMENSIONS,
FINISH & CASEWORK INFORMATION

GENERAL NOTES

- ALL EXTERIOR DIMENSIONS ARE FROM COLUMN CENTERLINES AND FACE OF MASONRY. INTERIOR DIMENSIONS ARE FROM FACE OF STUD WALLS UNLESS OTHERWISE NOTED.
- PROVIDE (1) 10-LB MULTIPURPOSE TYPE, BRACKET MOUNTED FIRE EXTINGUISHER (#E) PER 3000 SF, SPACED NOT TO EXCEED 75' TRAVEL DISTANCE. EXACT LOCATIONS ARE TO BE DETERMINED IN FIELD, AND AS DIRECTED BY FIRE MARSHALL. 1 @ EACH RETAIL SHOP.
- PROVIDE 5/8" GWB WITHIN WALL CAVITY SEGMENTS BEHIND ALL SURFACE MOUNTED ELECTRICAL PANELS PRIOR TO PANEL INSTALLATION.
- PROVIDE SOLID BLOCKING WITHIN WALL CAVITY SEGMENTS BEHIND ALL EXTERIOR LIGHTS AND SIGNAGE. RE: STRUCTURAL PACKAGE.
- PROVIDE ADEQUATE 2X WOOD BLOCKING FOR FIXTURES, PLUMBING ACCESSORIES, ELECTRIC WATER COOLER, MILLWORK, ELECTRIC PANELS, ROOF ACCESS LADDER, ETC.
- RE: WALL SECTIONS FOR EXTERIOR WALL ASSEMBLIES.
- VERIFY ALL FINISH FLOOR ELEVATIONS (F.F.E.) WITH CIVIL AND STRUCTURAL PACKAGES.
- RE: EXTERIOR ELEVATIONS FOR TYPE AND LOCATION OF EXTERIOR FINISHES.
- COORDINATE SIDEWALK LOCATIONS AND HEIGHTS WITH ALL HARDSCAPE PLANS. ALL SIDEWALKS AT DOOR THRESHOLDS SHALL BE LEVEL. CONCRETE SLAB SHOULD SLOPE TO DRAIN AWAY AT ENTRANCE. COORDINATE WITH HARDSCAPE PLANS.
- VERIFY ALL BRACE FRAME LOCATIONS AND CONFIGURATIONS ARE CLEAR OF ALL STOREFRONT AND DOOR OPENINGS.
- ALL PARAPET DIMENSIONS ARE FROM FACE OF STUD TO FACE OF STUD, UNLESS OTHERWISE NOTED.
- PROVIDE SINGLE-PLY MEMBRANE ROOFING (T.P.O. OR EPDM AS NOTED) ON 2" MIN. ISOCYANURATE INSUL. ON STEEL DECK, UNLESS OTHERWISE NOTED. INSULATION TO MEET FRAMES OR U.L. 1256.
- INSTALL ALL ROOFING PER MFRS STD. DETAILS AND PROCEDURES AND AS SPECIFIED.

KEYNOTE LEGEND

KEY VALUE	KEYNOTE TEXT
F1	STRUCTURAL COLUMN
F3	HOSE BIB
F4	DOWNSPOUT
F9	ALUMINUM CANOPY
F10	EXAM ROOM CASEWORK SEE A10.1
F11	BUILT IN CASEWORK SEE A10.1 & A10.2

WALL ASSEMBLY - EXTERIOR

- W1 - 3/8" BRICK VENEER
 - 1 1/2" AIRSPACE W/ ADJUSTABLE MASONRY TIES 10" O.C. HORIZ. & VERT.
 - PROVIDE MANUF. APPROVED SEAL BEHIND MASONRY TIES (1" MIN. AIRSPACE @ RECESSED BANDS)
 - 1" RIGID INSULATION, MIN. R-6, JOINTS TAPED PER MANUFACTURER RECOMMENDATIONS (SERVES AS WATERPROOF AIR BARRIER MEMBRANE)
 - 1/2" SHEATHING PER STRUCTURAL SHEATHING SCHEDULE
 - 2x6 WOOD STUDS PER SCHEDULE W/ R-19 BATT INSULATION
 - 5/8" INTERIOR GWB FULL HEIGHT
 - RE: FLOOR PLAN FOR RATED WALL LOCATIONS
- W2 - 7/8" 3-COAT STUCCO SYSTEM
 - 1" RIGID INSULATION, MIN. R-6, JOINTS TAPED PER MANUFACTURER RECOMMENDATIONS (SERVES AS WATERPROOF AIR BARRIER MEMBRANE)
 - 1/2" SHEATHING PER STRUCTURAL SHEATHING SCHEDULE
 - 2x6 WOOD STUDS PER SCHEDULE W/ R-19 BATT INSULATION
 - 5/8" INTERIOR GWB FULL HEIGHT
 - RE: FLOOR PLAN FOR RATED WALL LOCATIONS

NOTE: SEE A9.0 FOR INTERIOR WALL ASSEMBLY

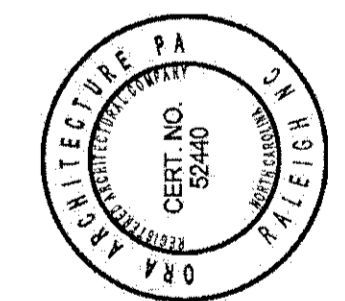
RATED WALL ASSEMBLY

- #U309 - 1 HR RATED WALL ASSEMBLY
 - INTERIOR 1 HR RATED WALL RE: GS3.0
 - STAIR SHAFT WALL
 - TENANT DEMISING WALL
- #U356 - 1 HR RATED WALL ASSEMBLY
 - EXTERIOR STAIR WALL AS INDICATED ON PLAN RE: GS3.0

FLOOR PLAN LEGEND

- 1 HR RATED WALL
- 01 DOOR NUMBER - SEE A5.0 FOR DOOR SCHEDULE

FIRST FLOOR PLAN 1



09/22/2014
09/22/2014
TOWN OF CARY
COMMENTS

FIRST FLOOR PLAN
SHEET NUMBER
A1.0

PROJECT: 13034