

Revisions

06/06/07 As per TOC 1st review.
 08/10/07 Revise road & lot grading.
 02/28/08 As per TOC 3rd review.

07-SB-003

APPROVED
 TOWN OF CARY

Approved DRC Date 06-05-08
 Planning JGB Date 05-13-08
 Engineering SS JB Date 6/10/08

OWNER:
 WINSLOW POND PROPERTIES, LLC
 3404 SPARTINA COURT
 RALEIGH, NC 27606
 (919) 971-8914

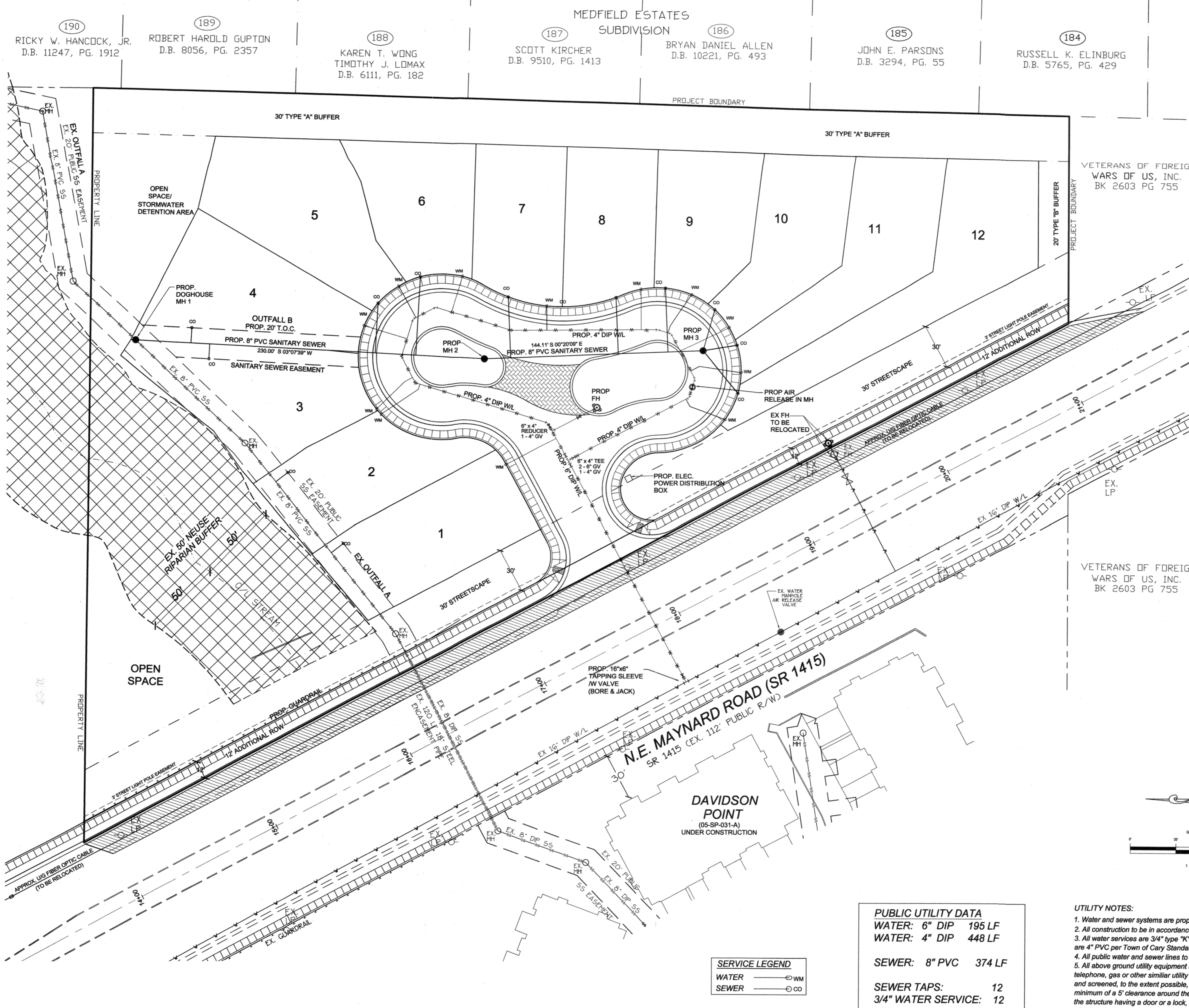
Project
 Maynard Creek

Utility Plan

Date
 February 8, 2007

Scale
 1" = 30'

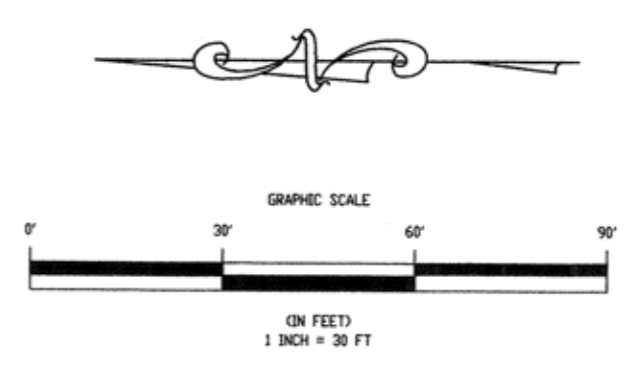
Sheet



VETERANS OF FOREIGN
 WARS OF US, INC.
 BK 2603 PG 755

VETERANS OF FOREIGN
 WARS OF US, INC.
 BK 2603 PG 755

LEGEND	
PROP. SANITARY SEWER	—●—
PROP. STORM DRAINAGE	—■—
PROP. WATERLINE	—○—
PROP. MANHOLE	●
PROP. CATCH BASIN	■
PROP. YARD ALLEY	—
PROP. HEAD WALL	—
PROP. FLARED END SECTION	—
PROP. HYDRANT ASSEMBLY	—
PROP. GATE VALVE IN MANHOLE	—
PROP. SLOW-OFF ASSEMBLY	—
EX. MANHOLE	○
EX. CATCH BASIN	■
EX. WETLANDS	—



PUBLIC UTILITY DATA	
WATER: 6" DIP	195 LF
WATER: 4" DIP	448 LF
SEWER: 8" PVC	374 LF
SEWER TAPS:	12
3/4" WATER SERVICE:	12

SERVICE LEGEND	
WATER	—○— WM
SEWER	—●— CO

UTILITY NOTES:

1. Water and sewer systems are proposed as public.
2. All construction to be in accordance with Town of Cary Standard Specifications and Details.
3. All water services are 3/4" type "K" copper w/ 3/4" meter boxes. All sanitary sewer services are 4" PVC per Town of Cary Standard Specifications.
4. All public water and sewer lines to be centered in 20' Town of Cary Utility Easement.
5. All above ground utility equipment and facilities associated with on-site electric, cable, telephone, gas or other similar utility shall be located in the side or rear yard area of the site and screened, to the extent possible, with evergreen plantings. Plantings shall allow for a minimum of a 5' clearance around the structure to allow for access. Additionally, any side of the structure having a door or a lock, the plantings shall allow for a 10' clearance. The amount of clearance shall account for the size of the plant material at maturity.