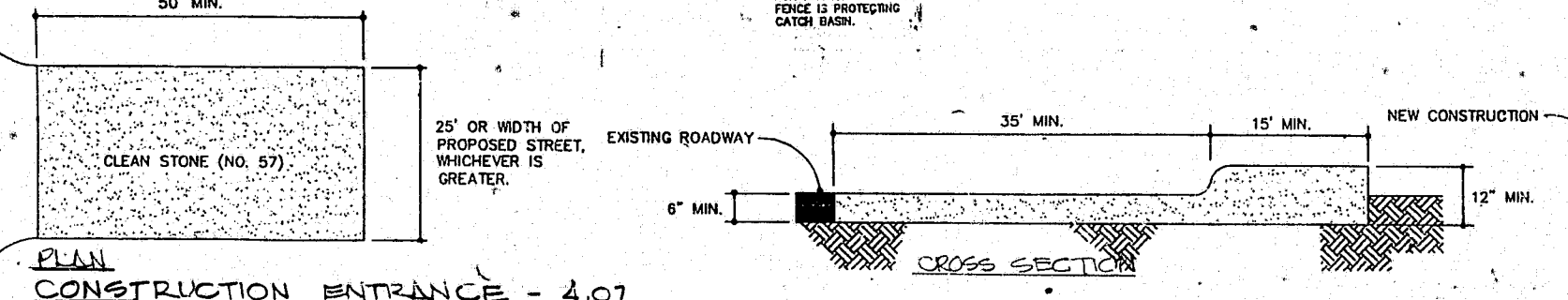
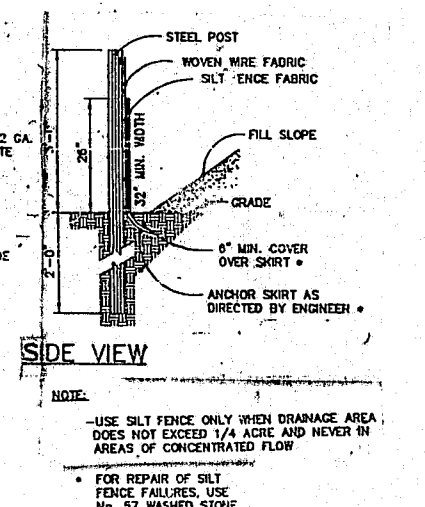
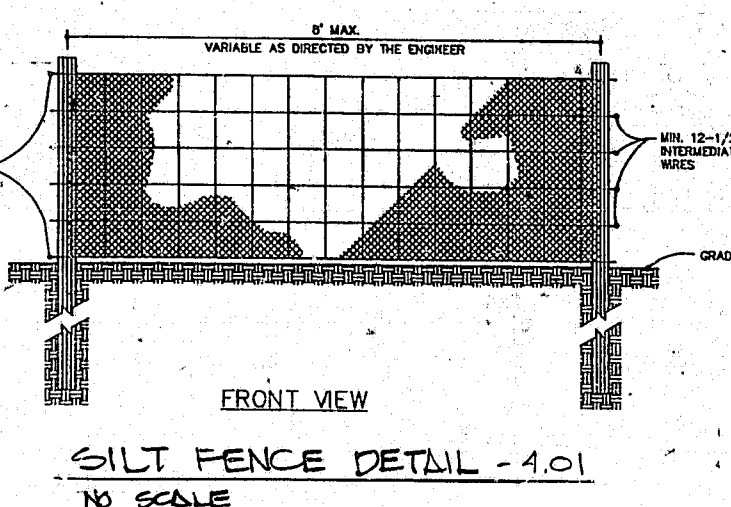
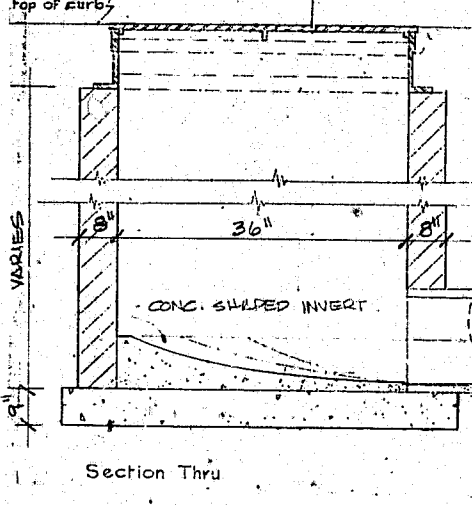
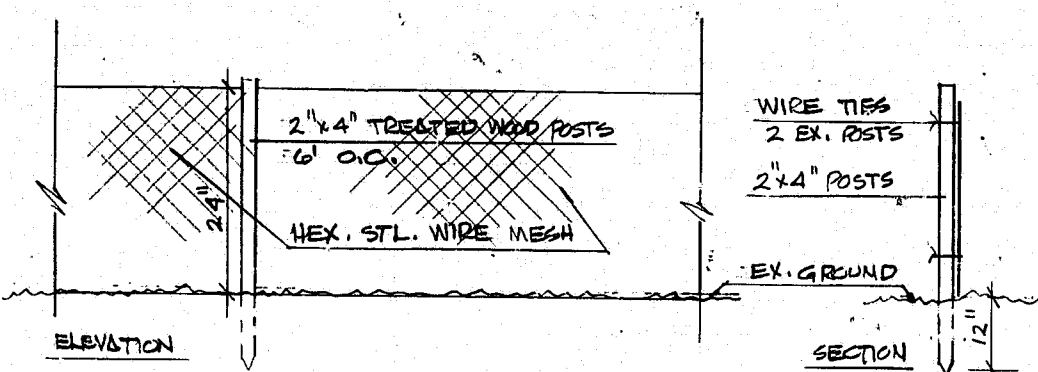
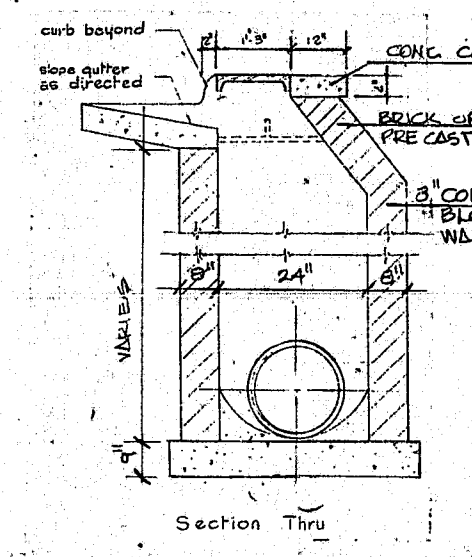
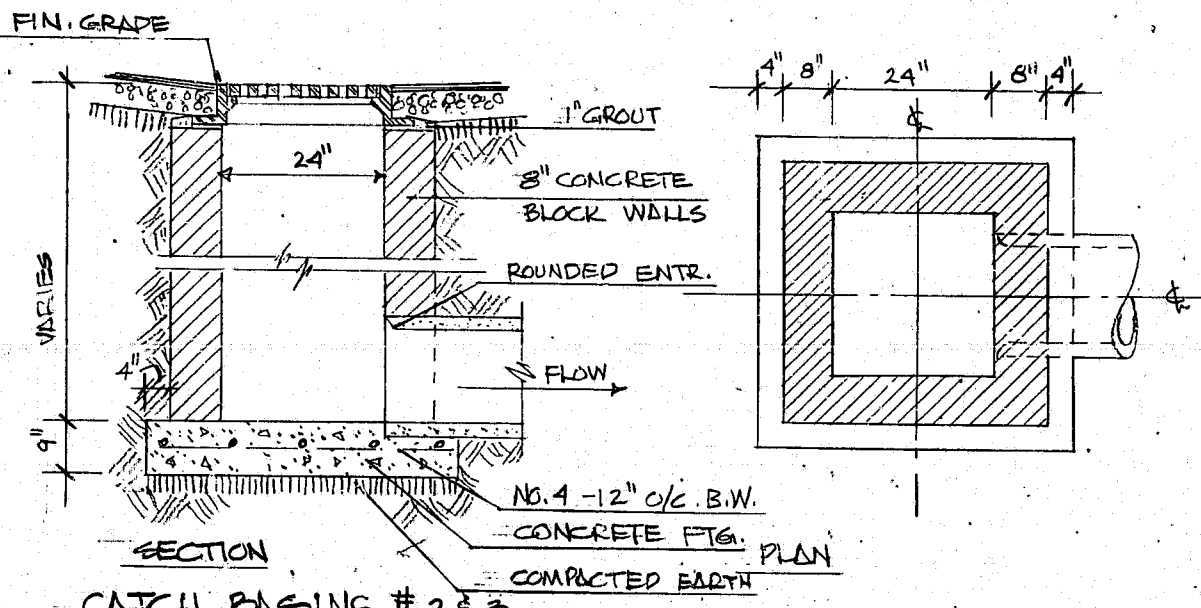
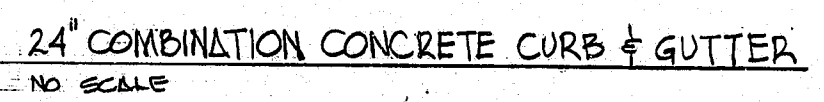
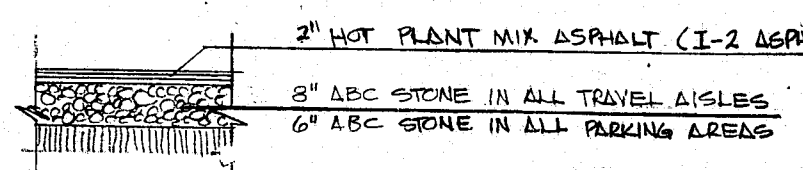
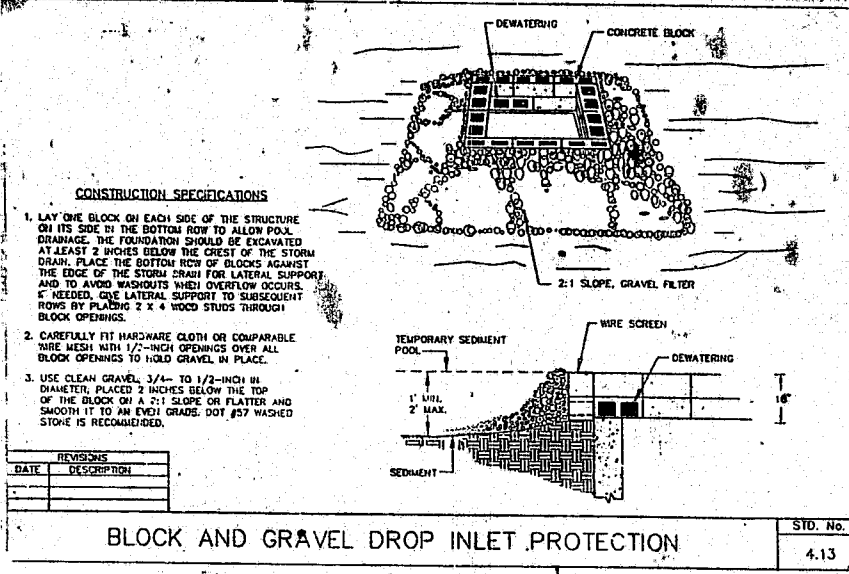


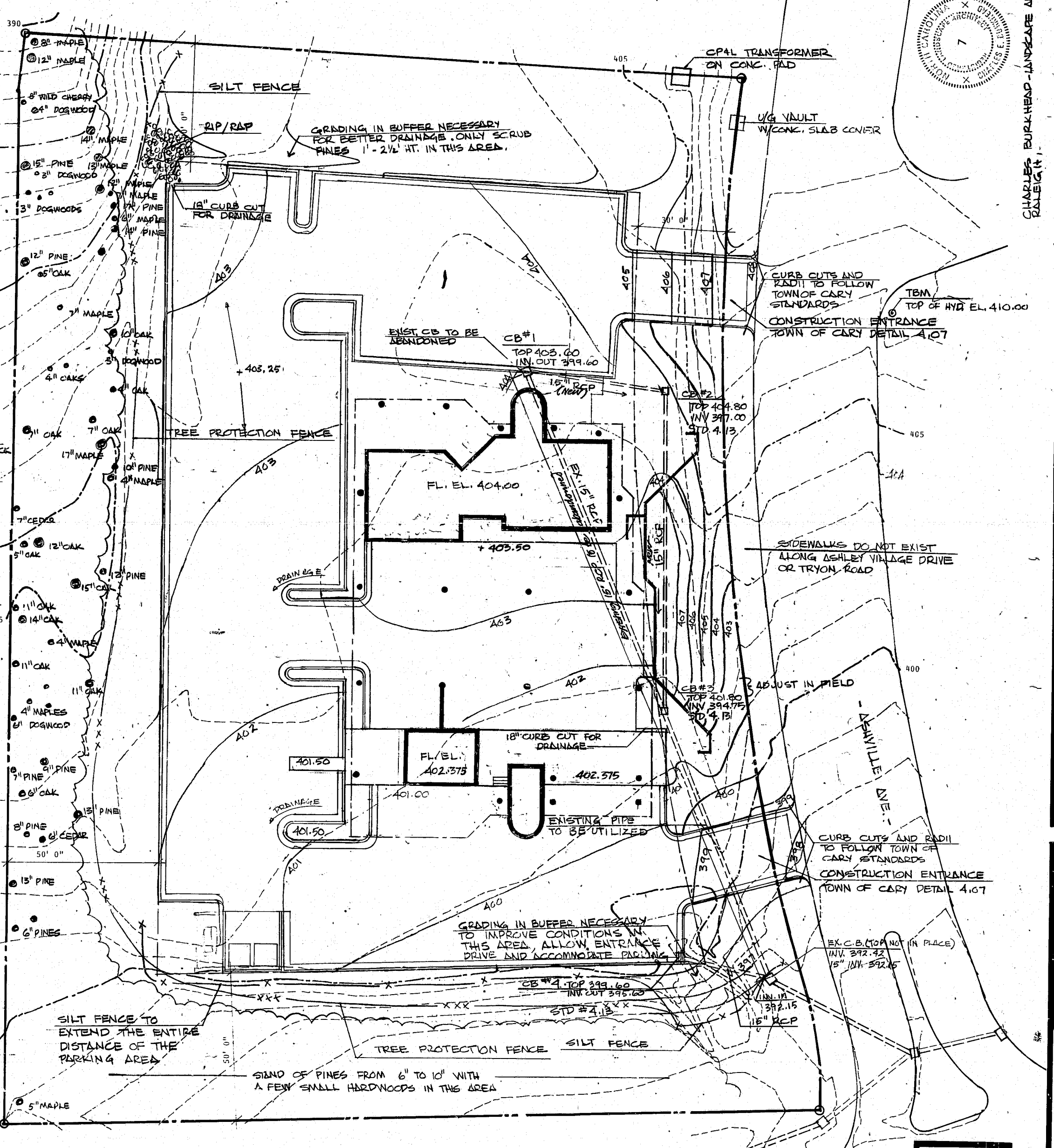
CONSTRUCTION SEQUENCE

1. Obtain grading permit;
2. Install all erosion control measures as shown;
3. Obtain certificate of compliance through on-site inspection by Town Environmental Inspector; 269-4347 or 460-9934
4. Proceed with grading;
5. Clean sediment basins when one-half full;
6. Seed and mulch denuded areas within thirty (30) days after finished grades are established;
7. Maintain soil erosion control measures until permanent ground cover is established;
8. Request final approval by Town Environmental Inspector;
9. Remove soil erosion control measures and stabilize these areas.



GRADING PLAN

Scale: 1" = 20'

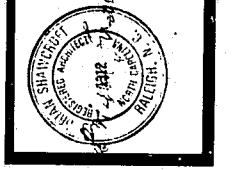


Drawings and specifications are prepared by the architect and remain the property of the architect. They have been prepared for this specific project and shall be returned to the architect upon completion of construction.

DRAWN BY: CES
CHECKED BY: CES
DATE: July 15, 1994

REVISIONS:

NO.	DESCRIPTION



BRIAN SHAWCROFT, ARCHITECT
1509 Pineview Street, Raleigh, NC 27608
Tel: 919-828-6396

Triangle Medical & Surgical Associates LLC
MEDICAL CENTER
400 Ashville Avenue, Cary, NC

CHARLES BURKHEAD - LANDSCAPE ARCHITECT