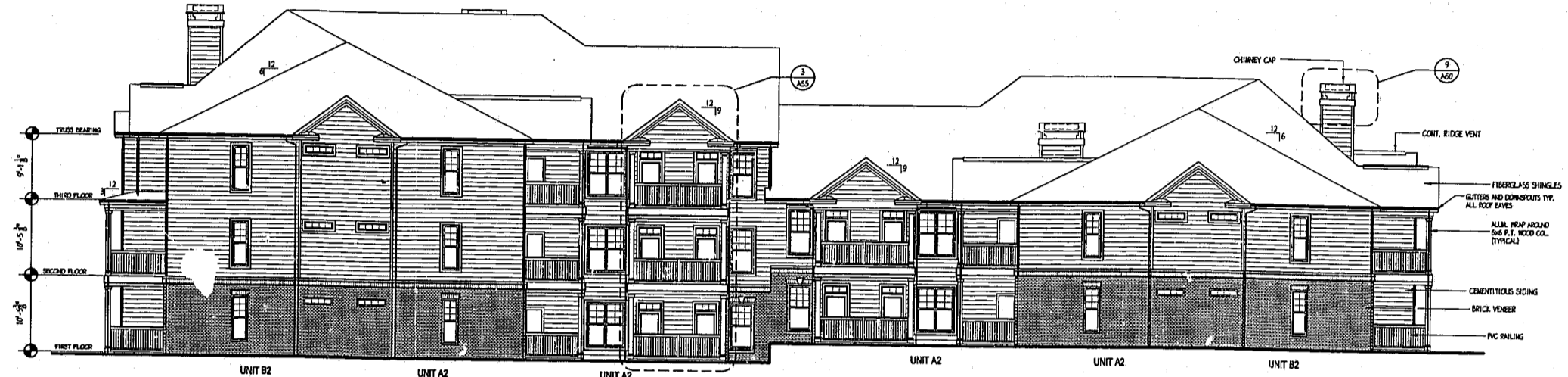
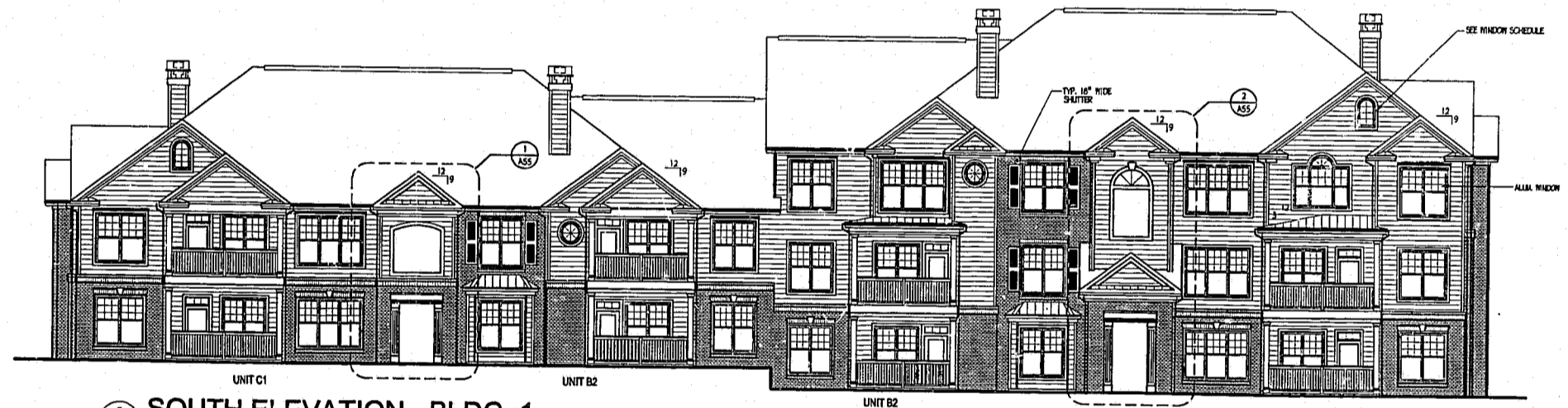


EXTERIOR FINISH CHART			
MATERIAL	TYPE	MANUFACTURERS	COLOR(S)
SIDING	CEMENTITIOUS	PORTER PAINTS (APTS.)	A STONE LION
		PORTER PAINTS (APTS.)	B IMPRESSIVE IVORY
		PORTER PAINTS (APTS.)	C SIENNA SAND
		PORTER PAINTS (APTS.)	D OAK FLATS
		PORTER PAINTS (CLUBHOUSE & PASSTHROUGHS)	E NATURAL ECHO
TRIM	WOOD		OFF WHITE
ROOFING	DIMENSIONED FIBERGLASS SHINGLES		CHARCOAL
DOORS & SHUTTERS	INSULATED METAL DOOR, PVC SHUTTERS	PORTER PAINTS	DOMINO (SATIN FINISH)
			I NOCELLAR ROSE
BRICK	BASIC BRICK	CUSTOM BRICK CO.	II CAPE COD
		CUSTOM BRICK CO.	
GLITTERS	PRE-FINISHED ALUMINUM		WHITE
CHIMNEY CAP	METAL		CHARCOAL
HANDRAILS	PVC HANDRAIL SYSTEM	PORTER PAINTS	DOMINO (SATIN FINISH)
COLUMNS	WOOD COLUMN W/ PVC CLADDING		WHITE
GARAGE DOORS	WOOD OVERHEAD DOOR		OFF WHITE
WINDOWS	PRE-FINISHED SINGLE HUNG ALUMINUM		WHITE

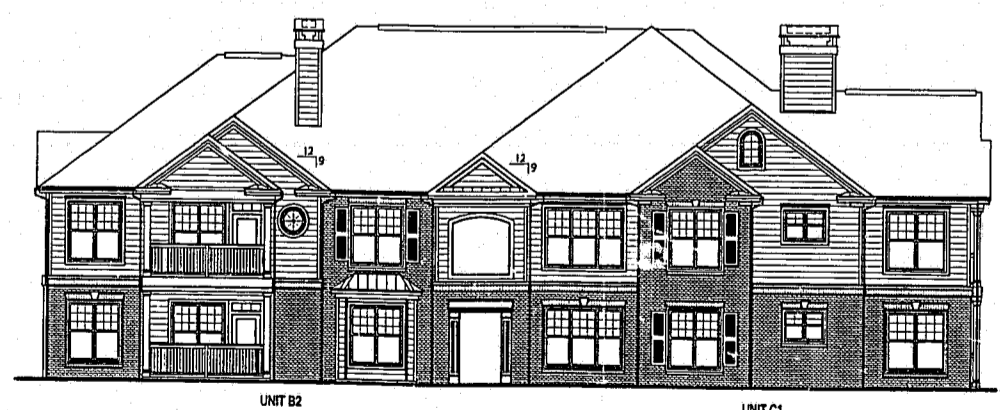
3



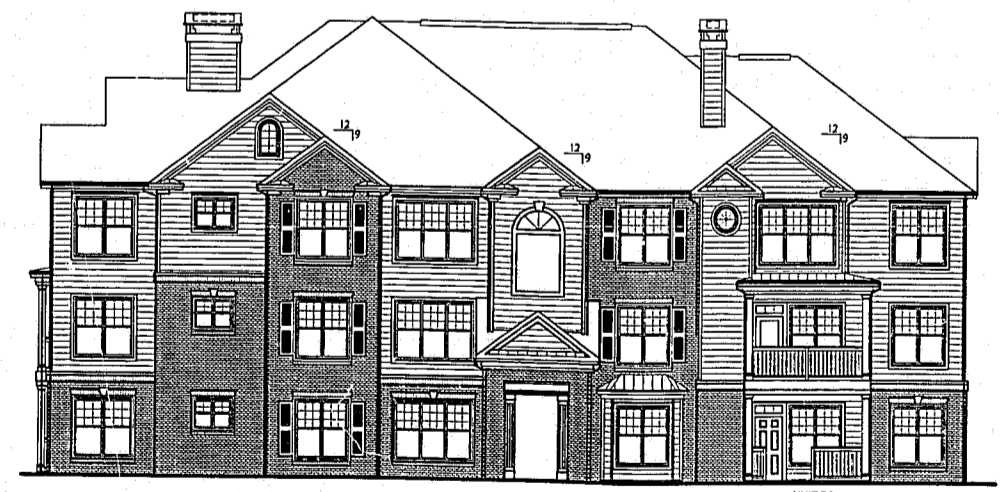
1 NORTH ELEVATION - BLDG. 1
SCALE: 3/32"=1'-0"



2 SOUTH ELEVATION - BLDG. 1
SCALE: 3/32"=1'-0"



3 WEST ELEVATION - BLDG. 1
SCALE: 3/32"=1'-0"



4 EAST ELEVATION - BLDG. 1
SCALE: 3/32"=1'-0"

OLDF TOWN @ CARPENTER
 COLOR RMS

No Comments - APPROVED



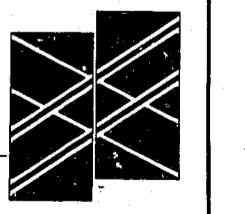
PUCCIANO & ENGLISH, INC.
ARCHITECTS, AIA
 3084 MERCER UNIVERSITY DRIVE SUITE 110
 ATLANTA, GEORGIA 30341 770-457-0623



JOB No: 9818
 DRAWN BY:
 CHECK BY:
 JOB PROGRESS:
 ITEM DATE

REVISIONS:
 DATE NO.
 3 11-16-00

CARPENTER VILLAGE
 AN APARTMENT DEVELOPMENT
 BY
THE WATERMARK COMPANIES
 ATLANTA, GEORGIA



ELEVATIONS
 BUILDING #1
 SHEET NO.

A-39

99-SP-008-C
 11-16-00
 DEC: 12-4-2000

NOT RELEASED FOR CONSTRUCTION