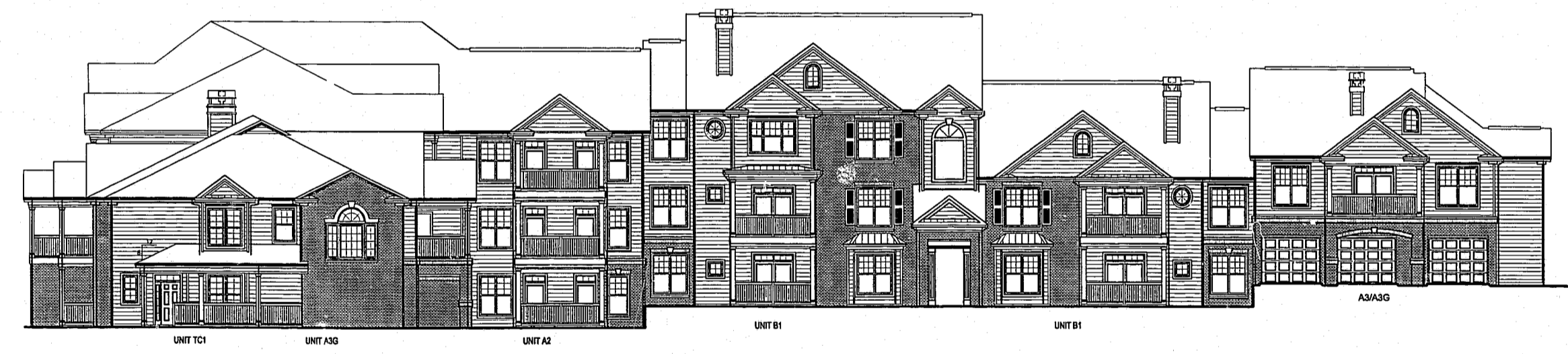


1 NORTH ELEVATION - BLDG. 4  
SCALE: 3/32"=1'-0"



2 SOUTH ELEVATION - BLDG. 4  
SCALE: 3/32"=1'-0"



3 EAST ELEVATION - BLDG. 4  
SCALE: 3/32"=1'-0"



4 WEST ELEVATION - BLDG. 4  
SCALE: 3/32"=1'-0"

EXTERIOR FINISH CHART			
MATERIAL	TYPE	MANUFACTURERS	COLOR(S)
SIDING	CEMENTITIOUS	PORTER PAINTS (APTS.)	A. STONE LION
		PORTER PAINTS (APTS.)	B. IMPRESSIVE IVORY
		PORTER PAINTS (APTS.)	C. SIENNA SAND
		PORTER PAINTS (APTS.)	D. OAK PLAYS
		PORTER PAINTS (CLUBHOUSE & PASSTHROUGHS)	E. NATURAL ECHO
TRIM	WOOD		OFF WHITE
ROOFING	DIMENSIONED FIBERGLASS SHINGLES		CHARCOAL
DOORS & SHUTTERS	INSULATED METAL DOOR, PVC SHUTTERS	PORTER PAINTS	DOMINO (SATIN FINISH)
BRICK	BASIC BRICK	CUSTOM BRICK CO.	1. MODULAR REZE
		CUSTOM BRICK CO.	2. CARE COO
GUTTERS	PRE-FINISHED ALUMINUM		WHITE
CHIMNEY CAP	METAL		CHARCOAL
HANDRAILS	PVC UNIVERSAL SYSTEM	PORTER PAINTS	DOMINO (SATIN FINISH)
COLLARS	WOOD COLLAR W/ PVC CLADDING		WHITE
GARAGE DOORS	WOOD OVERHEAD DOOR		OFF WHITE
WINDOWS	PRE-FINISHED SINGLE HING ALUMINUM		WHITE

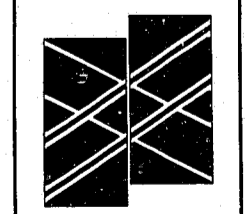
**PUCCIANO & ENGLISH, INC.**  
ARCHITECTS, AIA  
3084 MERCER UNIVERSITY DRIVE SUITE 110  
ATLANTA, GEORGIA 30341 770-457-0623



JOB No: 9818  
DRAWN BY:  
CHECK BY:  
JOB PROGRESS:  
ITEM DATE

REVISIONS:  
DATE NO.  
3 11-16-00

**CARPENTER VILLAGE**  
AN APARTMENT DEVELOPMENT  
BY  
**THE WATERMARK COMPANIES**  
ATLANTA, GEORGIA



ELEVATIONS  
BUILDING #4  
SHEET NO.

**A-42**

NOT RELEASED FOR CONSTRUCTION