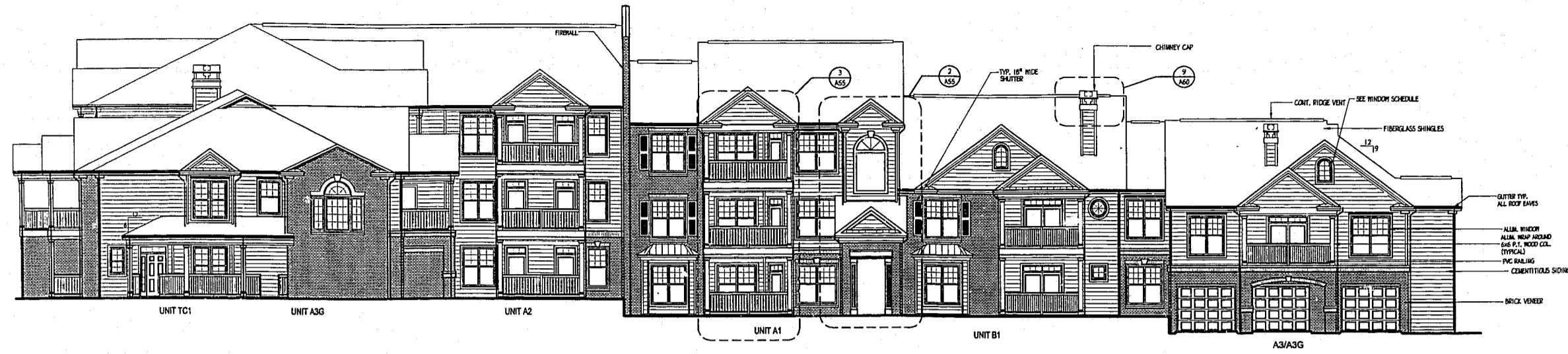


**PUCCIANO & ENGLISH, INC.**  
**ARCHITECTS, AIA**

3084 MERCER UNIVERSITY DRIVE SUITE 110  
 ATLANTA, GEORGIA 30341 770-457-0623



1 SOUTH ELEVATION - BLDG. 7  
 SCALE: 3/32"=1'-0"



2 NORTH ELEVATION - BLDG. 7  
 SCALE: 3/32"=1'-0"



3 WEST ELEVATION - BLDG. 7  
 SCALE: 3/32"=1'-0"



4 EAST ELEVATION - BLDG. 7  
 SCALE: 3/32"=1'-0"

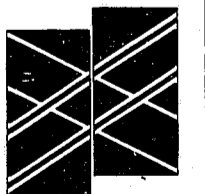
EXTERIOR FINISH CHART			
MATERIAL	TYPE	MANUFACTURERS	COLOR(S)
SIDING	CEMENTITIOUS	PORTER PAINTS (APTS.)	A STONE LIGN
		PORTER PAINTS (APTS.)	B IMPRESSIVE IVORY
		PORTER PAINTS (APTS.)	C SIENNA SAND
		PORTER PAINTS (APTS.)	D OAK FLATS
		PORTER PAINTS (CLUBHOUSE & PASSTHROUGHS)	E NATURAL ECHO
TRIM	WOOD		OFF WHITE
ROOFING	DIMENSIONED FIBERGLASS SHINGLES		CHARCOAL
DOORS & SHUTTERS	INSULATED METAL DOOR, PVC SHUTTERS	PORTER PAINTS	DOMINO (SATIN FINISH)
BRICK	BASIC BRICK	CUSTOM BRICK CO.	I MODULAR ROSE
		CUSTOM BRICK CO.	II CAPE COD
GUTTERS	PRE-FINISHED ALUMINUM		WHITE
CHIMNEY CAP	METAL		CHARCOAL
HANDRAILS	PVC HANDRAIL SYSTEM	PORTER PAINTS	DOMINO (SATIN FINISH)
COLUMNS	WOOD COLUMN W/ PVC CLADDING		WHITE
GARAGE DOORS	WOOD OVERHEAD DOOR		OFF WHITE
WINDOWS	PRE-FINISHED SINGLE HUNG ALUMINUM		WHITE

JOB No: 9818  
 DRAWN BY:  
 CHECK BY:  
 JOB PROGRESS:  
 ITEM DATE

REVISIONS:  
 DATE NO.

3 11-16-00

**CARPENTER VILLAGE**  
 AN APARTMENT DEVELOPMENT  
 BY  
**THE WATERMARKE COMPANIES**  
 ATLANTA, GEORGIA



ELEVATIONS  
 BUILDING #7

SHEET NO.

**A-45**

NOT RELEASED FOR CONSTRUCTION