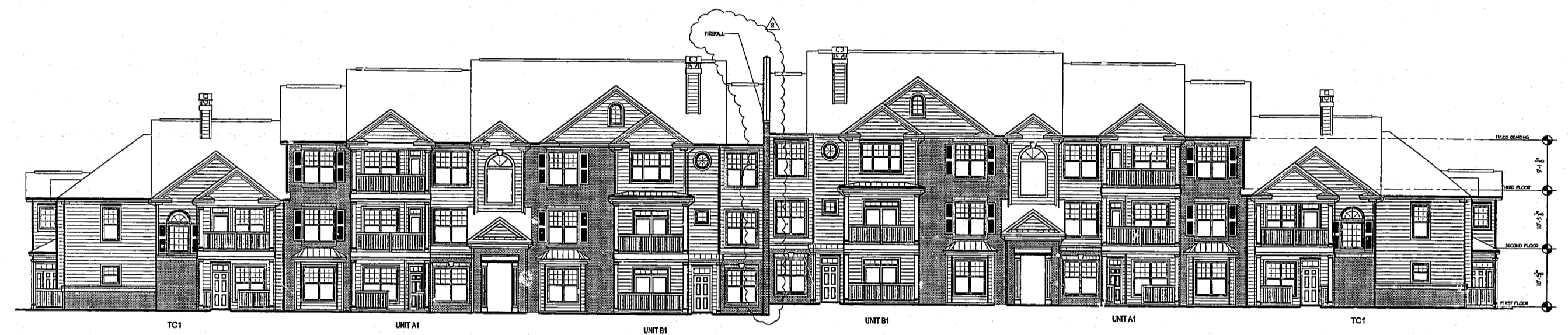
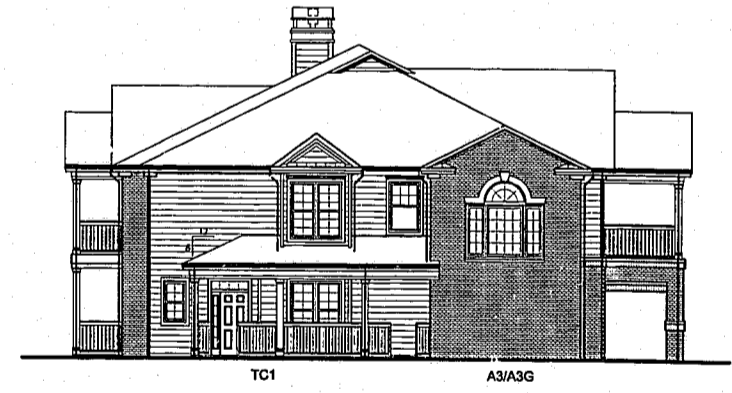


1 SOUTH ELEVATION - BLDG. 8  
SCALE: 3/32"=1'-0"



2 NORTH ELEVATION - BLDG. 8  
SCALE: 3/32"=1'-0"



3 WEST ELEVATION - BLDG. 8  
SCALE: 3/32"=1'-0" EAST ELEVATION SIM. OPP. HAND

EXTERIOR FINISH CHART			
MATERIAL	TYPE	MANUFACTURERS	COLOR(S)
SIDING	CEMENTITIOUS	PORTER PAINTS (APTS.)	A STONE LION
		PORTER PAINTS (APTS.)	B IMPRESSIVE IVORY
		PORTER PAINTS (APTS.)	C SIENNA SAND
		PORTER PAINTS (APTS.)	D OAK FLATS
		PORTER PAINTS (CLUBHOUSE & PASSTHROUGHS)	E NATURAL ECHO
TRIM	WOOD		OFF WHITE
ROOFING	DIMENSIONED FIBERGLASS SHINGLES		CHARCOAL
DOORS & SHUTTERS	INSULATED METAL DOOR, PVC SHUTTERS	PORTER PAINTS	DOMINO (SATIN FINISH)
BRICK	BASIC BRICK	CUSTOM BRICK CO.	I MODULAR ROSE
		CUSTOM BRICK CO.	II CAPE COD
GUTTERS	PRE-FINISHED ALUMINUM		WHITE
CHIMNEY CAP	METAL		CHARCOAL
HANDRAILS	PVC HANDRAIL SYSTEM	PORTER PAINTS	DOMINO (SATIN FINISH)
COLUMNS	WOOD COLUMN W/ PVC CLADDING		WHITE
GARAGE DOORS	WOOD OVERHEAD DOOR		OFF WHITE
WINDOWS	PRE-FINISHED SINGLE HUNG ALUMINUM		WHITE

PUCCIANO & ENGLISH, INC.  
ARCHITECTS, AIA  
3084 MERCER UNIVERSITY DRIVE SUITE 110  
ATLANTA, GEORGIA 30341 770-457-0823



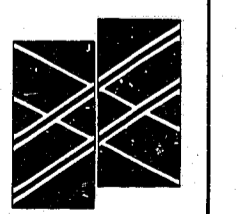
JOB No: 9818  
DRAWN BY:  
CHECK BY:  
JOB PROGRESS:

ITEM	DATE

REVISIONS:  
DATE NO.

2	
3	11-16-00

CARPENTER VILLAGE  
AN APARTMENT DEVELOPMENT  
BY  
THE WATERMARK COMPANIES  
ATLANTA, GEORGIA



ELEVATIONS  
BUILDING #8  
SHEET NO.

A-46

NOT RELEASED FOR CONSTRUCTION