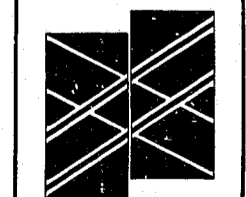


**PUCCIANO & ENGLISH, INC.**  
**ARCHITECTS, AIA**  
 3084 MERCER UNIVERSITY DRIVE, SUITE 110  
 ATLANTA, GEORGIA 30341 770-457-9823



JOB No: 9818  
 DRAWN BY:  
 CHECK BY:  
 JOB PROGRESS:  
 ITEM DATE  
 REVISIONS:  
 DATE NO.  
 3 11-16-00

**CARPENTER VILLAGE**  
 AN APARTMENT DEVELOPMENT  
 BY  
**THE WATERMARKE COMPANIES**  
 ATLANTA, GEORGIA



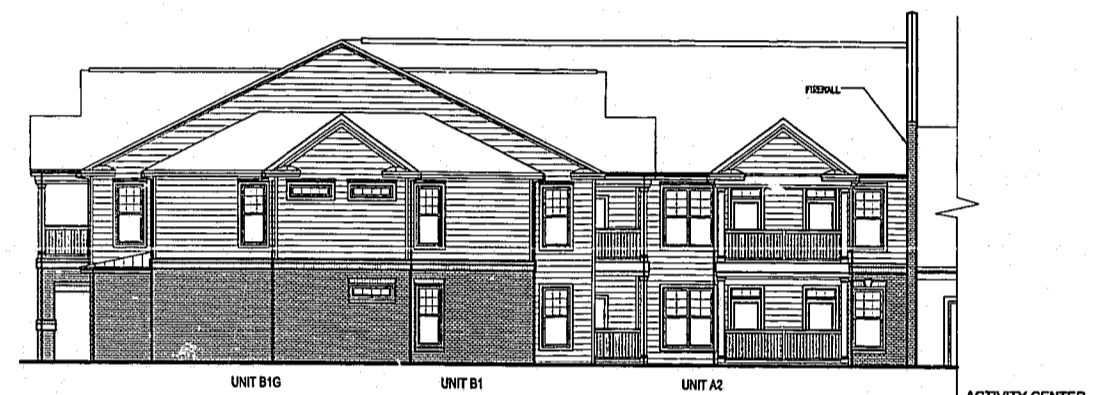
ELEVATIONS  
 BUILDING #10  
 SHEET NO.

**A-48**

| EXTERIOR FINISH CHART |                                    |  |                       |
|-----------------------|------------------------------------|--|-----------------------|
| MATERIAL              | TYPE                               | MANUFACTURERS                            | COLOR(S)              |
| SIDING                | CEMENTITIOUS                       | PORTER PAINTS (APTS.)                    | A STONE LION          |
|                       |                                    | PORTER PAINTS (APTS.)                    | B IMPRESSIVE IVORY    |
|                       |                                    | PORTER PAINTS (APTS.)                    | C SIENNA SAND         |
|                       |                                    | PORTER PAINTS (APTS.)                    | D OAK FLATS           |
|                       |                                    | PORTER PAINTS (CLUBHOUSE & PASSTHROUGHS) | E NATURAL ECHO        |
| TRIM                  | WOOD                               |  | OFF WHITE             |
| ROOFING               | DIMENSIONED FIBERGLASS SHINGLES    |  | CHARCOAL              |
| DOORS & SHUTTERS      | INSULATED METAL DOOR, PVC SHUTTERS | PORTER PAINTS                            | DOMINO (SATIN FINISH) |
| BRICK                 | BASIC BRICK                        | CUSTOM BRICK CO.                         | I MODULAR ROSE        |
|                       |                                    | CUSTOM BRICK CO.                         | II CAPE COD           |
| GLITTERS              | PRE-FINISHED ALUMINUM              |  | WHITE                 |
| CHIMNEY CAP           | METAL                              |  | CHARCOAL              |
| HANDRAILS             | PVC HANDRAIL SYSTEM                | PORTER PAINTS                            | DOMINO (SATIN FINISH) |
| COLUMNS               | WOOD COLUMN W/ PVC CLADDING        |  | WHITE                 |
| GARAGE DOORS          | WOOD OVERHEAD DOOR                 |  | OFF WHITE             |
| WINDOWS               | PRE-FINISHED SINGLE HUNG ALUMINUM  |  | WHITE                 |



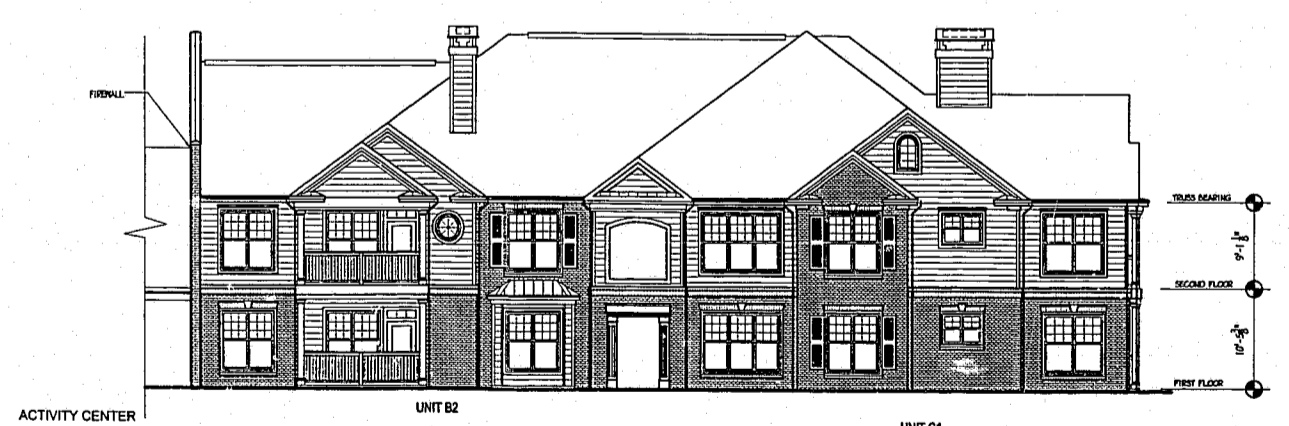
1 NORTH ELEVATION - BLDG. 10  
 SCALE: 3/32"=1'-0"



2 WEST ELEVATION - BLDG. 10  
 SCALE: 3/32"=1'-0"



3 SOUTH ELEVATION - BLDG. 10  
 SCALE: 3/32"=1'-0"



4 EAST ELEVATION - BLDG. 10  
 SCALE: 3/32"=1'-0"

NOT RELEASED FOR CONSTRUCTION