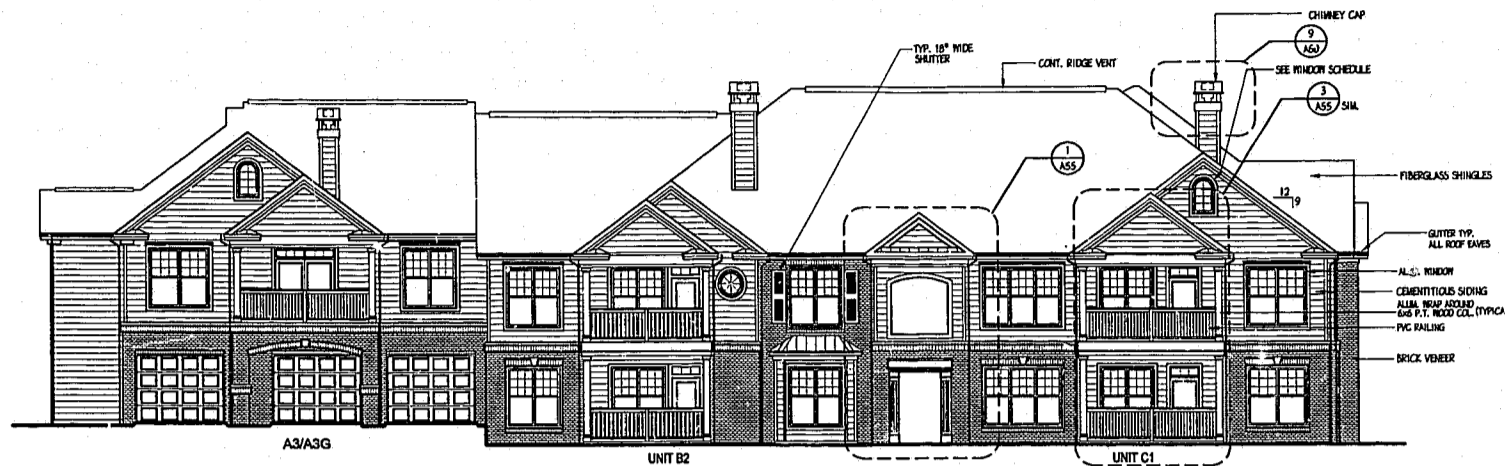
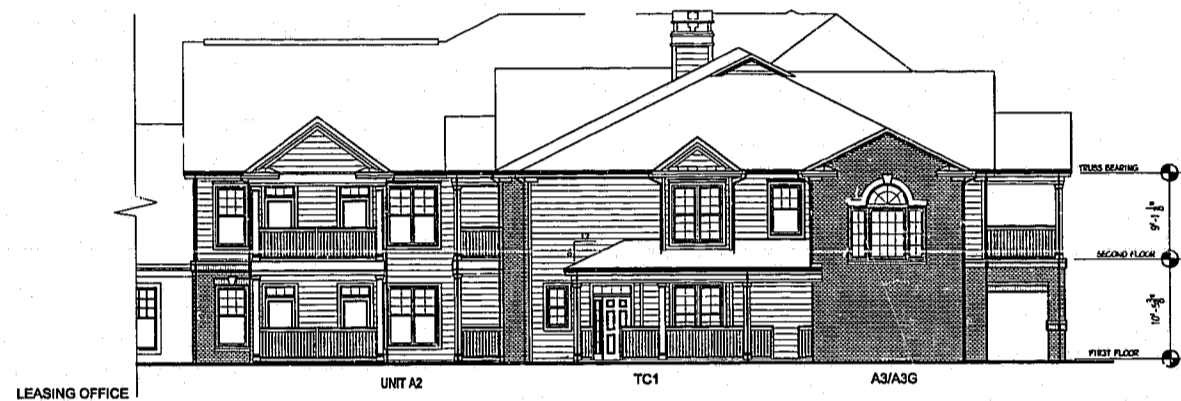


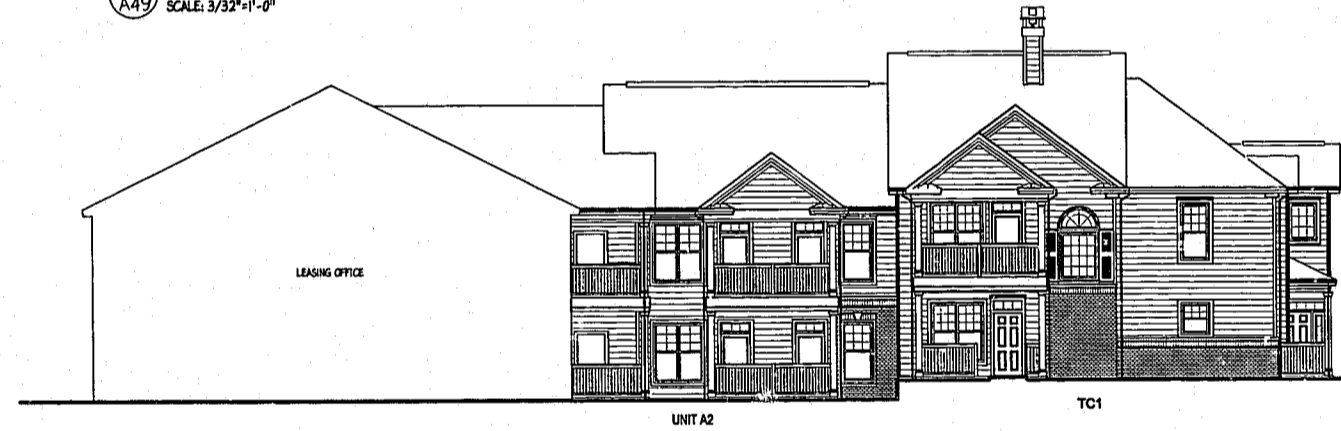
EXTERIOR FINISH CHART			
MATERIAL	TYPE	MANUFACTURERS	COLOR(S)
SIDING	CEMENTITIOUS	PORTER PAINTS (APTS.)	A STONE LION
		PORTER PAINTS (APTS.)	B IMPRESSIVE IVORY
		PORTER PAINTS (APTS.)	C SIENNA SAND
		PORTER PAINTS (APTS.)	D OAK FLATS
		PORTER PAINTS (CLUBHOUSE & PASSTHROUGHS)	E NATURAL ECHO
TRIM	WOOD		OFF WHITE
ROOFING	DIMENSIONED FIBERGLASS SHINGLES		CHARCOAL
DOORS & SHUTTERS	INSULATED METAL DOOR, PVC SHUTTERS	PORTER PAINTS	DOMINO (SATIN FINISH)
		CUSTOM BRICK CO.	I MODULAR ROSE
BRICK	BASIC BRICK	CUSTOM BRICK CO.	II CAPE COD
		ANTIQUE BRICK	
GUTTERS	PRE-FINISHED ALUMINUM		WHITE
CHIMNEY CAP	METAL		CHARCOAL
HANDRAILS	PVC HANDRAIL SYSTEM	PORTER PAINTS	DOMINO (SATIN FINISH)
COLUMNS	WOOD COLUMN W/ PVC CLADDING		WHITE
GARAGE DOORS	WOOD OVERHEAD DOOR		OFF WHITE
WINDOWS	PRE-FINISHED SINGLE HUNG ALUMINUM		WHITE



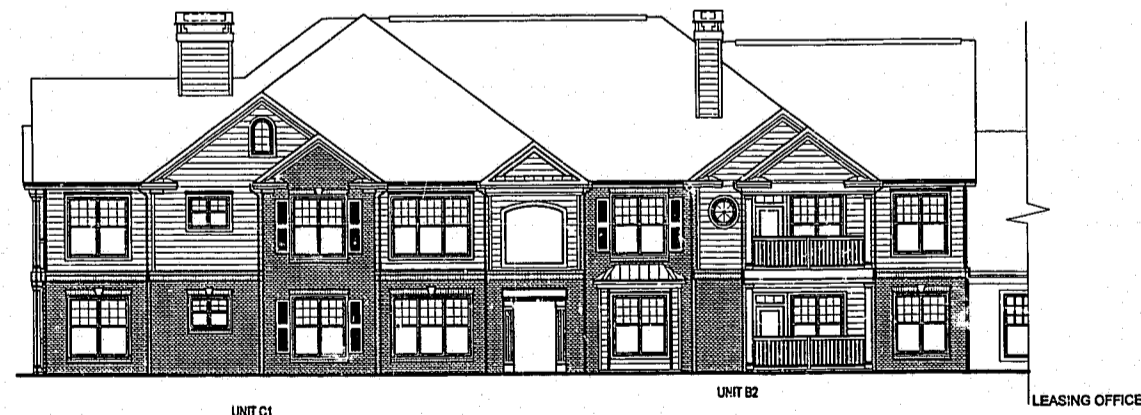
1 SOUTH ELEVATION - BLDG. 11
SCALE: 3/32"=1'-0"



2 WEST ELEVATION - BLDG. 11
SCALE: 3/32"=1'-0"



3 NORTH ELEVATION - BLDG. 11
SCALE: 3/32"=1'-0"



4 EAST ELEVATION - BLDG. 11
SCALE: 3/32"=1'-0"



PUCCIANO & ENGLISH, INC.
ARCHITECTS, AIA

3084 MERCER UNIVERSITY DRIVE SUITE 110
ATLANTA, GEORGIA 30341 770-457-0623



JOB No: 9818
DRAWN BY:
CHECK BY:

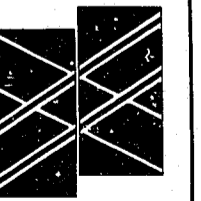
JOB PROGRESS:

ITEM DATE

REVISIONS:
DATE NO.

3 11-16-00

CARPENTER VILLAGE
AN APARTMENT DEVELOPMENT
BY
THE WATERMARK COMPANIES
ATLANTA, GEORGIA



ELEVATIONS
BUILDING #11

SHEET NO.

A-49

NOT RELEASED FOR CONSTRUCTION