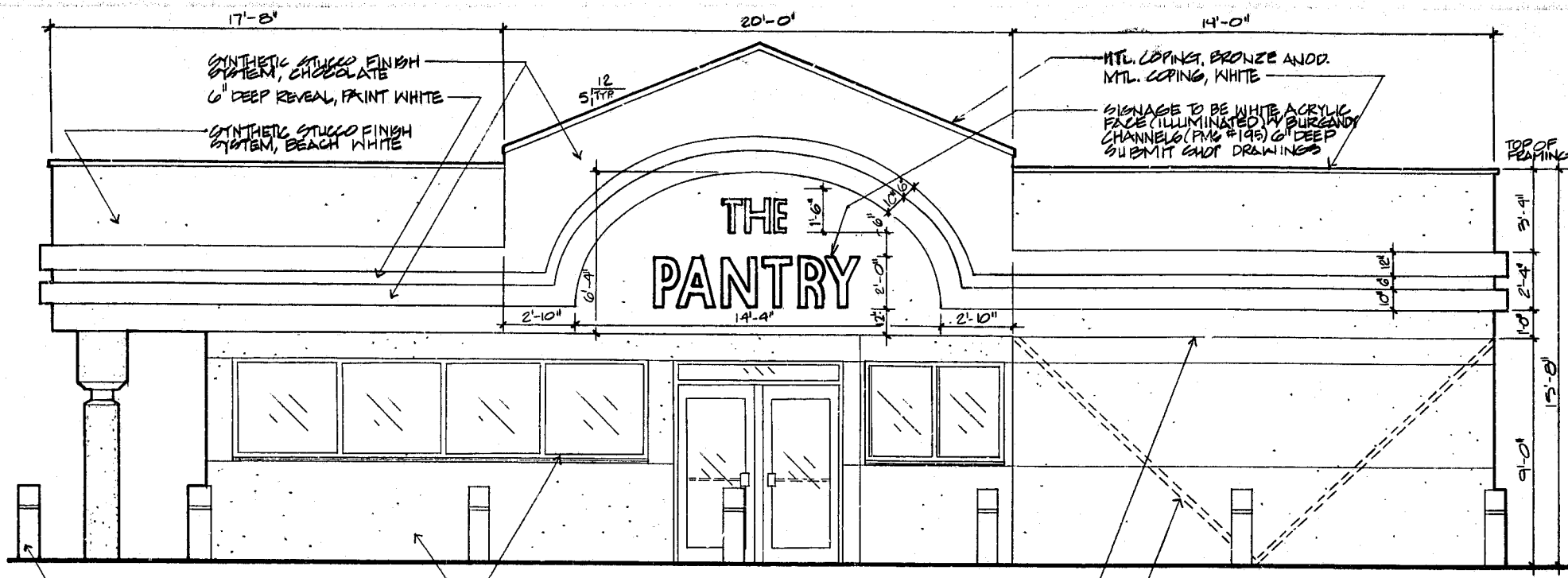


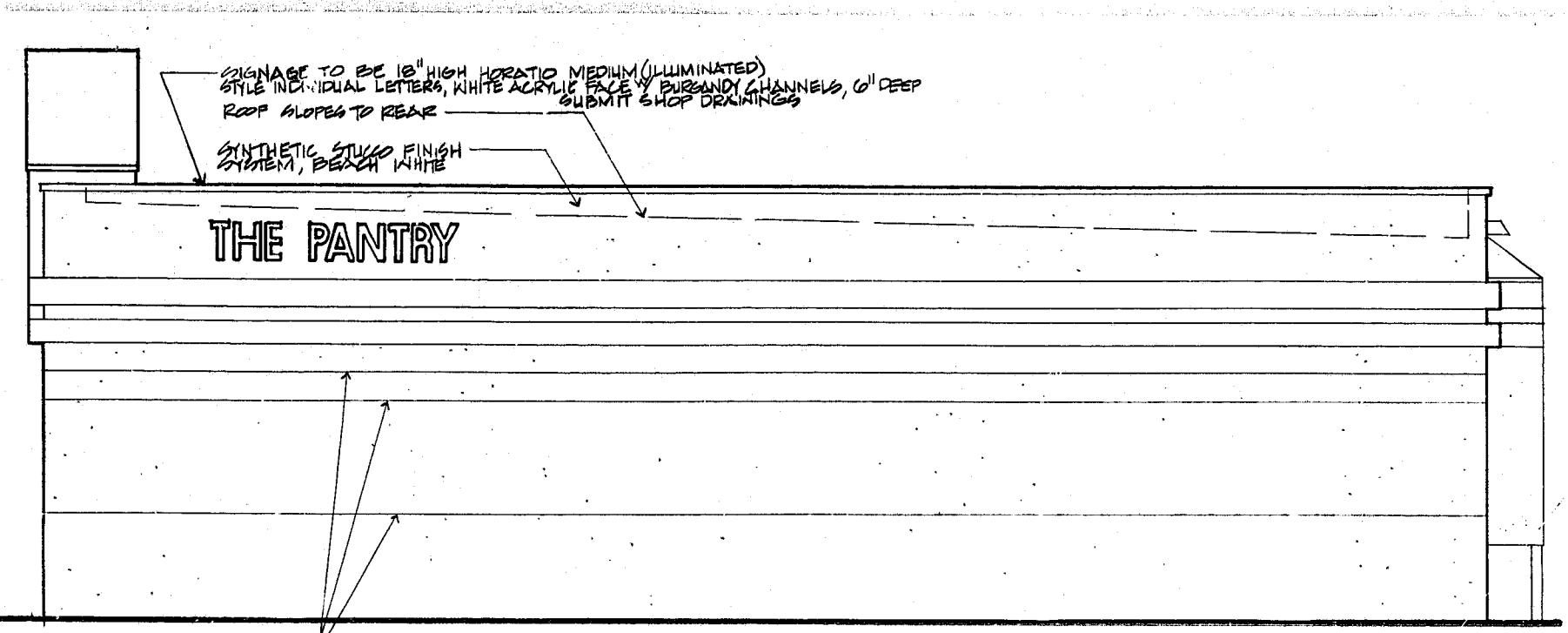
QUICK-ASSOCIATES, P.A.

architects/planners
interior designers

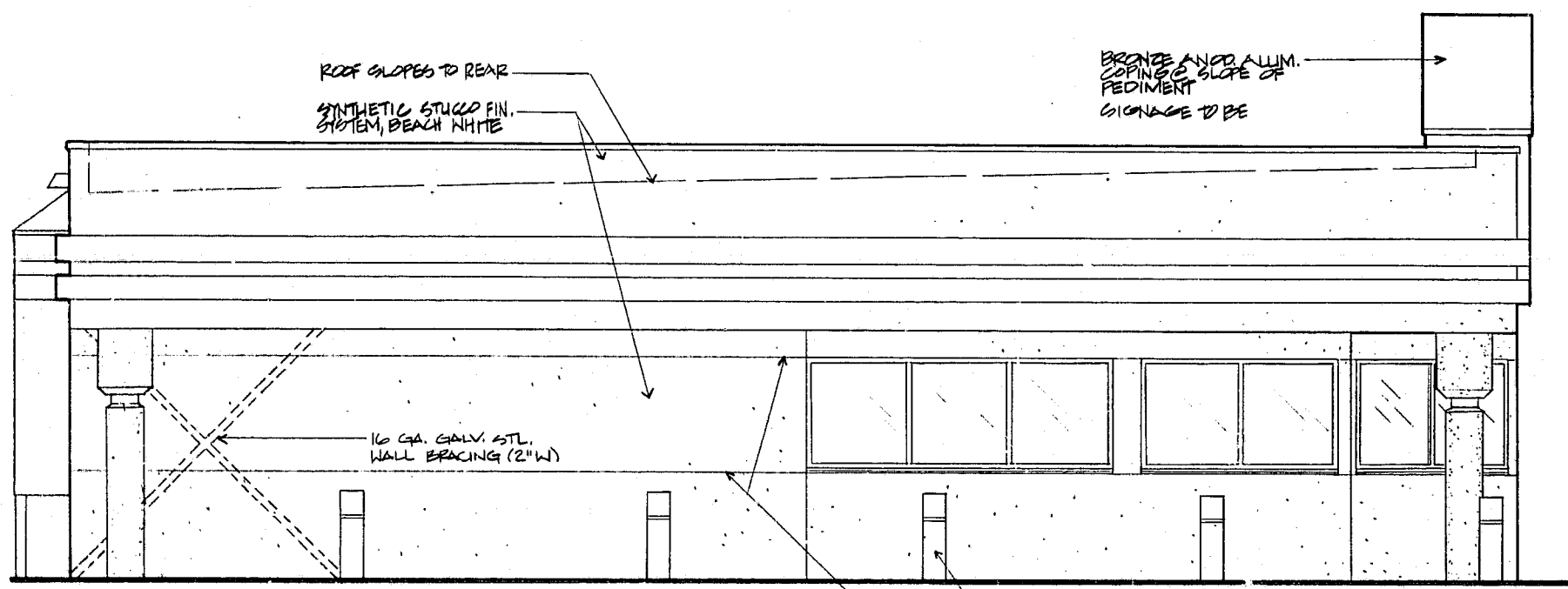
714 st. mary's street
raleigh, nc 27605
ph. (919) 821-2800
fax (919) 821-2896



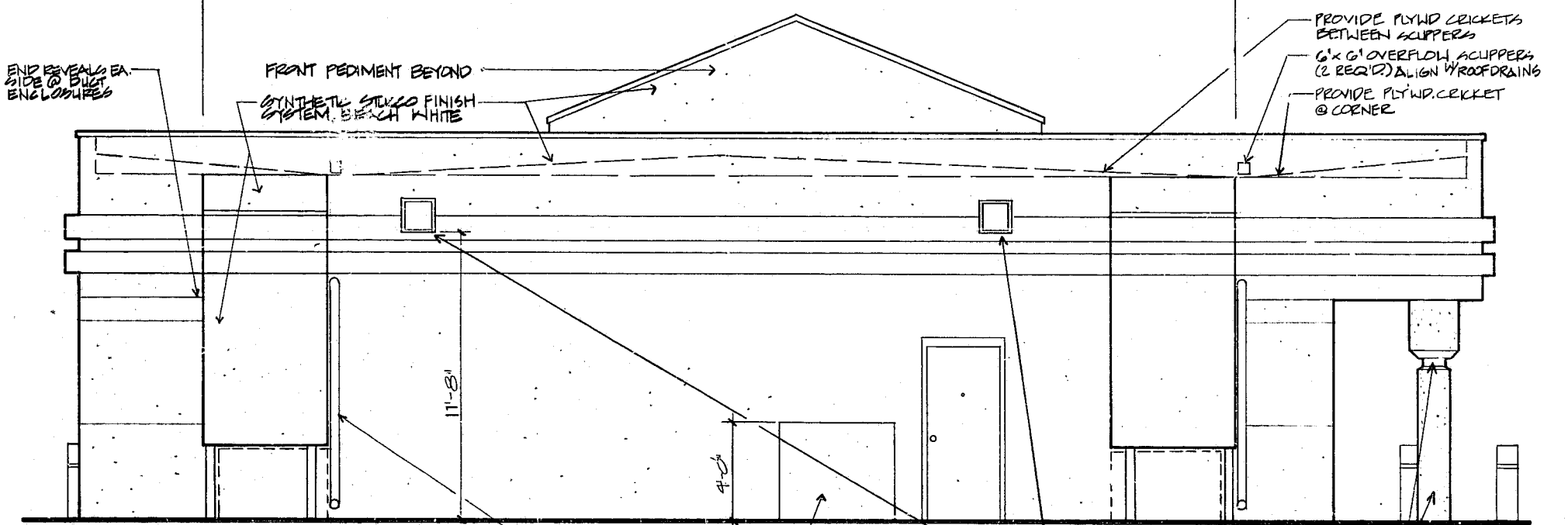
1 SOUTH ELEVATION
1/4" = 1'-0"



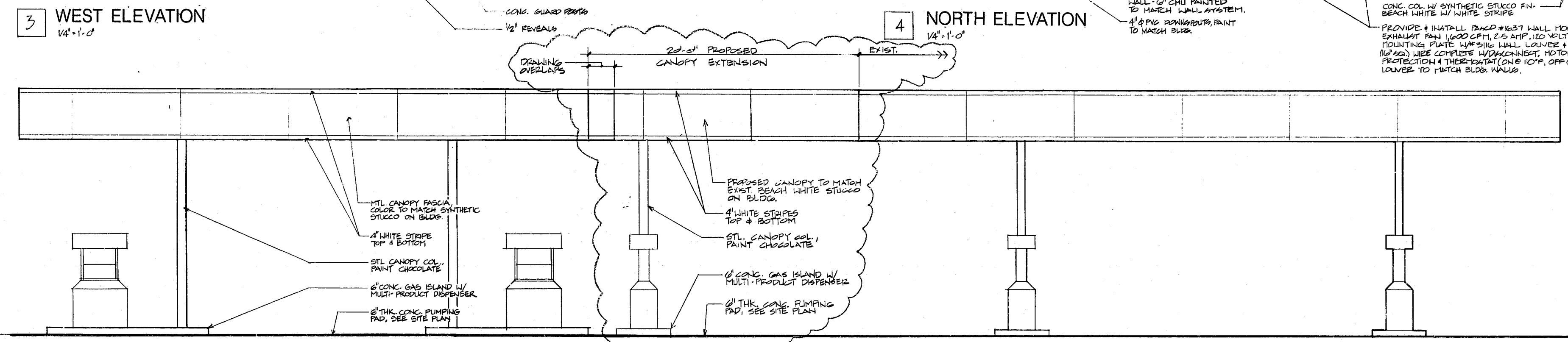
2 EAST ELEVATION
1/4" = 1'-0"



3 WEST ELEVATION
1/4" = 1'-0"

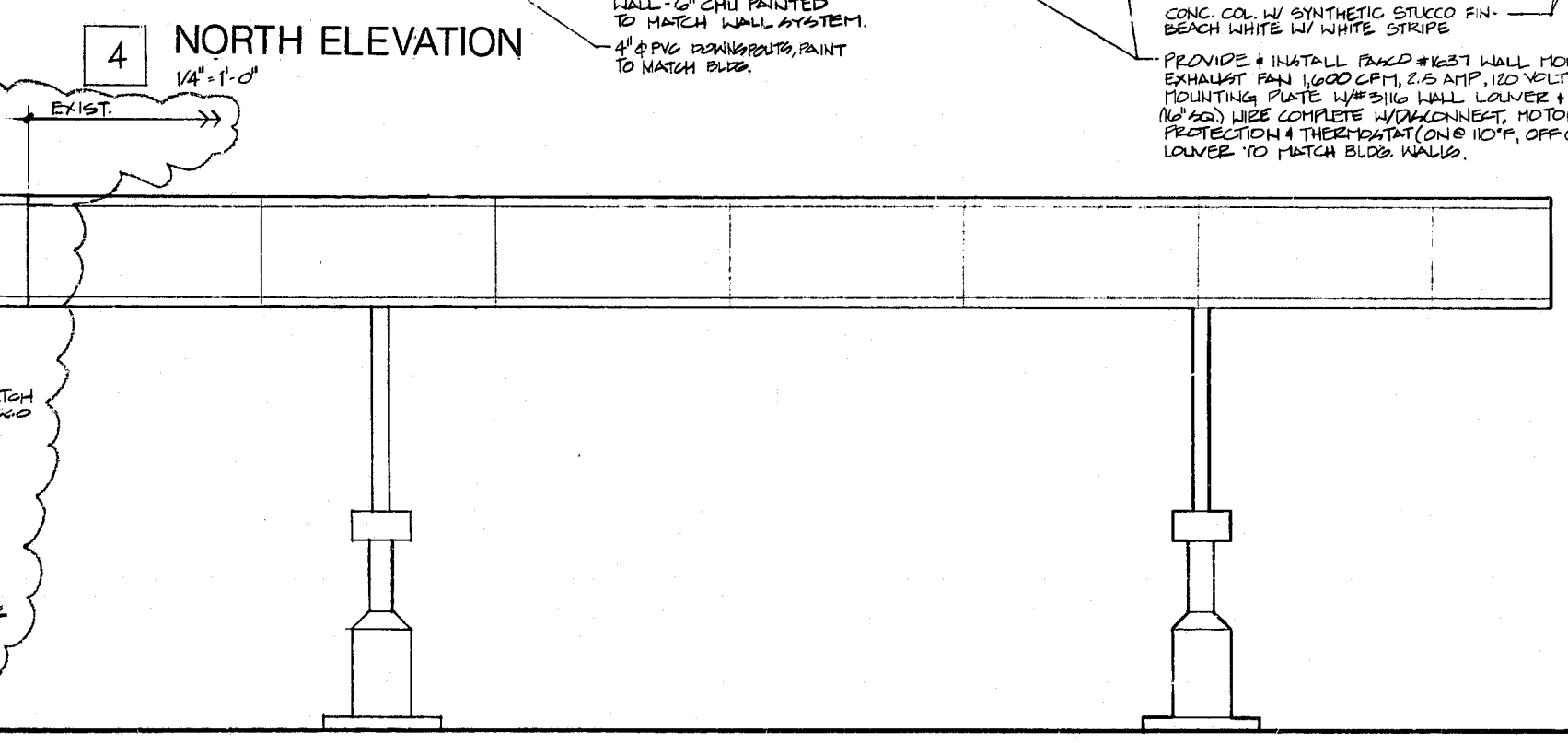


4 NORTH ELEVATION
1/4" = 1'-0"

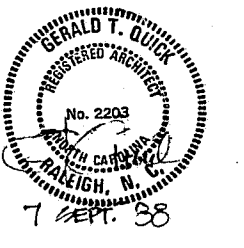


5 GASOLINE CANOPY ELEVATION FACING HARRISON BLVD.
1/4" = 1'-0"

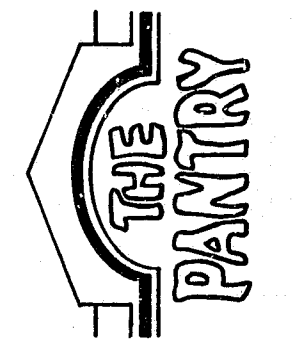
NOTE: THIS ELEVATION WILL NOT CHANGE.



6 ELEVATION FACING SHOPPING CENTER ENTRANCE.
W/PROPOSED CANOPY EXTENSION
1/4" = 1'-0"



PROTOTYPE III
STORE # 816
CANOPY ADDITION
located in
HARRISON AVENUE
CARY, NC



1988 INITIAL DEVELOPMENT
issue date
7 SEPT 88
FOR REVIEW
TOWN OF CARY
22 SEPT 88 - FOR REVIEW
APPEARANCE COMMITTEE
10 OCT. 88 - FOR REVIEW
PLANNING & ZONING BOARD
13 OCT. 88 - FOR CONTR.

1988 PROPOSED
29 JULY '93 - CARY REVIEW

project 19316 set no.
dwg. by DS
ckd. by DEB
content
EXTERIOR
ELEVATIONS

FOR CONSTRUCTION
sheet
A-2
of