

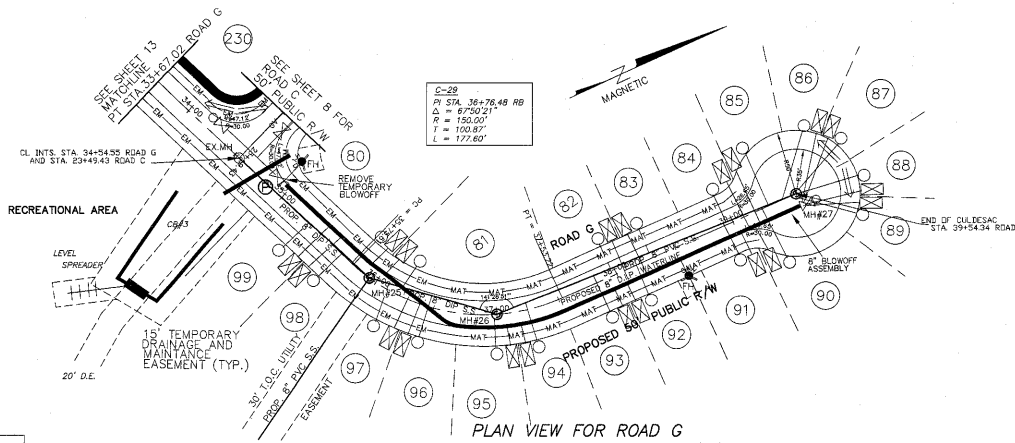
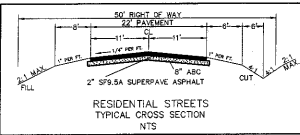
CUSTOM BASIN	DRAINAGE AREA	C	I ^{1/2} FLUSH	Q	FACTOR	LENGTH	LEVEL	SPREADER
CB #3	6.9 AC.	0.50	1	3.45 CFS	13	#2	45"	
CB #7	4.84 AC.	0.45	1	2.18 CFS	13	#7	29"	
CB #8	7.75 AC.	0.48	1	3.88 CFS	13	#9	48"	
CB #9	15.39 AC.	0.45	1	6.93 CFS	13	#9	90"	

CUSTOM BASIN	DRAINAGE AREA (Ac.)	DENUDED AREA	STORAGE REQUIRED	STORAGE PROVIDED	BASIN SIZE W x L x D	WEIR LENGTH
CB #3	6.9	1.7	12524 CF	12784 CF	34'x94'x5'	16'
CB #7	4.84	1.31	8784 CF	9248 CF	34'x68'x5'	15'
CB #8	7.75	2.76	14066 CF	14280 CF	42'x85'x5'	25'
CB #9	15.39	4.16	27933 CF	28800 CF	60'x120'x5'	47'

INSPECT BASINS AFTER EACH RAINFALL OCCURRENCE
 BASINS ARE TO BE CLEANED AS NEEDED
 DEPTH INCLUDES 1" FREEBOARD
 ALL SEDIMENT LADEN RUNOFF SHALL BE DIVERTED INTO AN EROSION CONTROL DEVICE

LOCATION, QUANTITY, AND PLACEMENT OF DRAINAGE PIPES AND EROSION CONTROL DEVICES MAY VARY TO BETTER CONFORM TO FIELD CONDITIONS.

ALL WORK AND MATERIALS SHALL CONFORM TO THE STANDARDS AND SPECIFICATIONS OF WAKE COUNTY, NCOTI AND TOWN OF CARY. THE CONTRACTOR SHALL OBTAIN A COPY OF THESE STANDARDS PRIOR TO CONSTRUCTION.

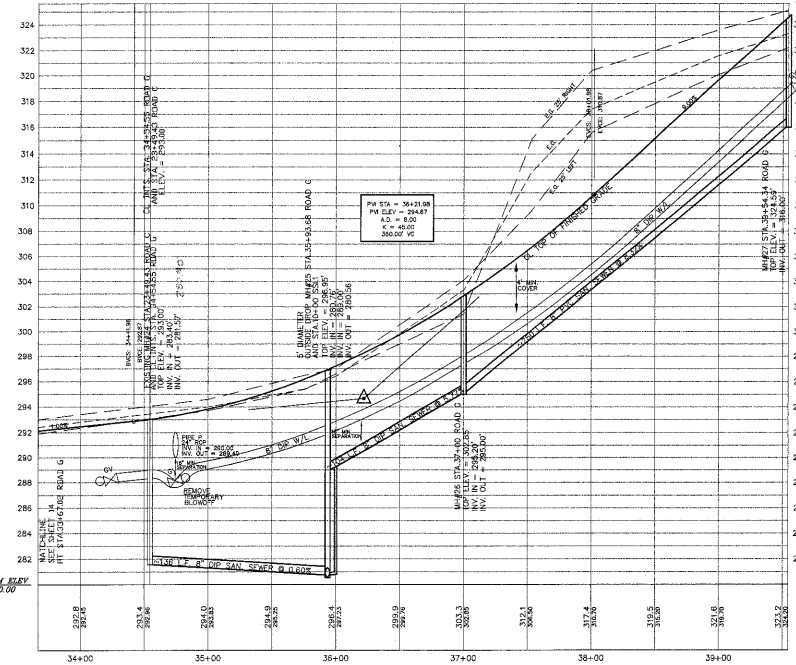


- LEGEND
- RR RAP ENERGY DISSIPATOR
 - CB CUSTOM BASIN
 - TEMPORARY MATTING
 - ENKA MAT
 - ⊕ STORM SEWER PIPE
 - DIVERSION FENCING
 - ▨ GRAVEL CONSTRUCTION ENTRANCE
 - SILT FENCE
 - LEVEL SPREADER

PIPE SIZE	TYPE	DRAIN AREA	Q25 CFS	LENGTH FEET	SLOPE %	INVERT IN	INVERT OUT	DISSIPATOR DESIGN SIZE LENGTH FT	WIDTH FT	D50	LINING THICKNESS
PIPE G 24"RC	W/F.E.S.	4.18	9.18	60	1.0	298.0	297.4	12.0	6.0	6"	24" CLASS B
PIPE H 18"RC	W/F.E.S.	2.15	4.86	60	1.0	294.5	293.9	9.0	4.5	6"	24" CLASS B
PIPE I 24"RC	W/F.E.S.	7.93	15.12	60	1.0	299.0	298.4	12.0	6.0	6"	24" CLASS B
PIPE J 24"RC	W/F.E.S.	6.32	12.83	60	1.0	311.0	310.4	12.0	6.0	6"	24" CLASS B
PIPE K 24"RC	W/F.E.S.	4.37	9.18	60	1.0	308.0	308.4	12.0	6.0	6"	24" CLASS B
PIPE L 24"RC	W/F.E.S.	8.56	16.20	60	1.0	302.0	301.4	12.0	6.0	6"	24" CLASS B
PIPE M 30"RC	W/F.E.S.	10.16	18.63	60	1.0	289.0	288.4	15.0	7.5	6"	24" CLASS B
PIPE N 30"RC	W/F.E.S.	10.56	19.04	60	1.0	291.0	290.4	15.0	7.5	6"	24" CLASS B
PIPE O 30"RC	W/F.E.S.	14.74	25.65	60	1.0	286.0	285.4	15.0	7.5	6"	24" CLASS B
PIPE P 24"RC	W/F.E.S.	6.37	12.83	60	1.0	280.0	289.4	12.0	6.0	6"	24" CLASS B

TEMPORARY MATTING SCHEDULE	JUVE
STA. 10+43 RIGHT SIDE ROAD E	TO BEGIN ENKA MATTING STA. 12-72 ROAD E
STA. 10+10 RIGHT SIDE ROAD E	TO INV. IN PIPE K STA. 13+39.57 ROAD E
STA. 18+00 RIGHT SIDE ROAD E	TO INV. IN PIPE J STA. 19+01.88 ROAD E
STA. 15+36 RIGHT SIDE ROAD E	TO INV. IN PIPE I STA. 12+84.32 ROAD F
STA. 18+21 LEFT SIDE ROAD F	TO INV. OUT PIPE I STA. 19+13.47 ROAD F
STA. 16+61 RIGHT SIDE ROAD F	TO BEGIN ENKA MATTING STA. 18+99 ROAD F
STA. 10+75 LEFT SIDE ROAD G	TO BEGIN ENKA MATTING STA. 14+76 ROAD G
STA. 14+17 RIGHT SIDE ROAD G	TO INV. OUT PIPE G STA. 17+54.55 ROAD G
STA. 20+12 LEFT SIDE ROAD G	TO BEGIN ENKA MATTING STA. 24+36 ROAD G
STA. 28+49 LEFT SIDE ROAD G	TO INV. IN PIPE G STA. 32+10 ROAD G
STA. 30+19 LEFT SIDE ROAD G	TO BEGIN ENKA MATTING STA. 36+55 ROAD G
STA. 39+19 RIGHT SIDE ROAD G	TO BEGIN ENKA MATTING STA. 36+55 ROAD G
STA. 14+18 LEFT SIDE ROAD H	TO BEGIN ENKA MATTING STA. 15+26 ROAD H
STA. 10+62 RIGHT SIDE ROAD H	TO INV. OUT PIPE N STA. 10+00 ROAD H
STA. 33+50 LEFT SIDE ROAD B	TO BEGIN ENKA MATTING STA. 34+29 ROAD B
STA. 33+50 RIGHT SIDE ROAD B	TO INV. OUT PIPE H STA. 39+89.97 ROAD B

PERMANENT DITCH PROTECTION SCHEDULE	ENKA MAT
STA. 12+72 RIGHT SIDE ROAD E	TO INV. IN PIPE K STA. 13+39.57 ROAD E
STA. 18+88 RIGHT SIDE ROAD F	TO INV. IN PIPE I STA. 19+13.47 ROAD F
STA. 14+76 LEFT SIDE ROAD G	TO INV. IN PIPE G STA. 17+54.55 ROAD G
STA. 24+36 LEFT SIDE ROAD G	TO INV. IN PIPE M STA. 25+31.91 ROAD G
STA. 36+55 LEFT SIDE ROAD G	TO INV. IN PIPE O STA. 32+10 ROAD G
STA. 36+55 RIGHT SIDE ROAD G	TO INV. OUT PIPE G STA. 32+10 ROAD G
STA. 13+36 LEFT SIDE ROAD H	TO INV. IN PIPE H STA. 10+00 ROAD H
STA. 34+29 LEFT SIDE ROAD B	TO INV. IN PIPE I STA. 39+89.97 ROAD B



PROFILE VIEW FOR ROAD G

05-SB-012-A
 APPROVED
 TOWN OF CARY
 Approved by: [Signature] Date: 06/15/05
 Planning: [Signature] Date: 06/22/05
 Engineering: [Signature] Date: 06/22/05

SCALE: 1" = 50' (HORIZONTAL)
 1" = 5' (VERTICAL)

NOTE: PRELIMINARY PLANS. DO NOT USE FOR CONSTRUCTION.



STEWART-PROCTOR
 ENGINEERING and SURVEYING
 319 CHAPMAN ROAD SUITE 106
 RALEIGH, NC 27603
 TEL. 919 779-1855 FAX 919 779-1681

DATE	06-14-05	SURVEYED BY	JOB	MIDDLE CREEK TOWNSHIP	NORTH CAROLINA
SCALE	1"=50'	DRAWN BY	DWG. NO.	WAKE COUNTY	OWNER: WINSLOW PROPERTIES
REVISIONS				ZONED R-30	P.I.N. 0679-13-1616