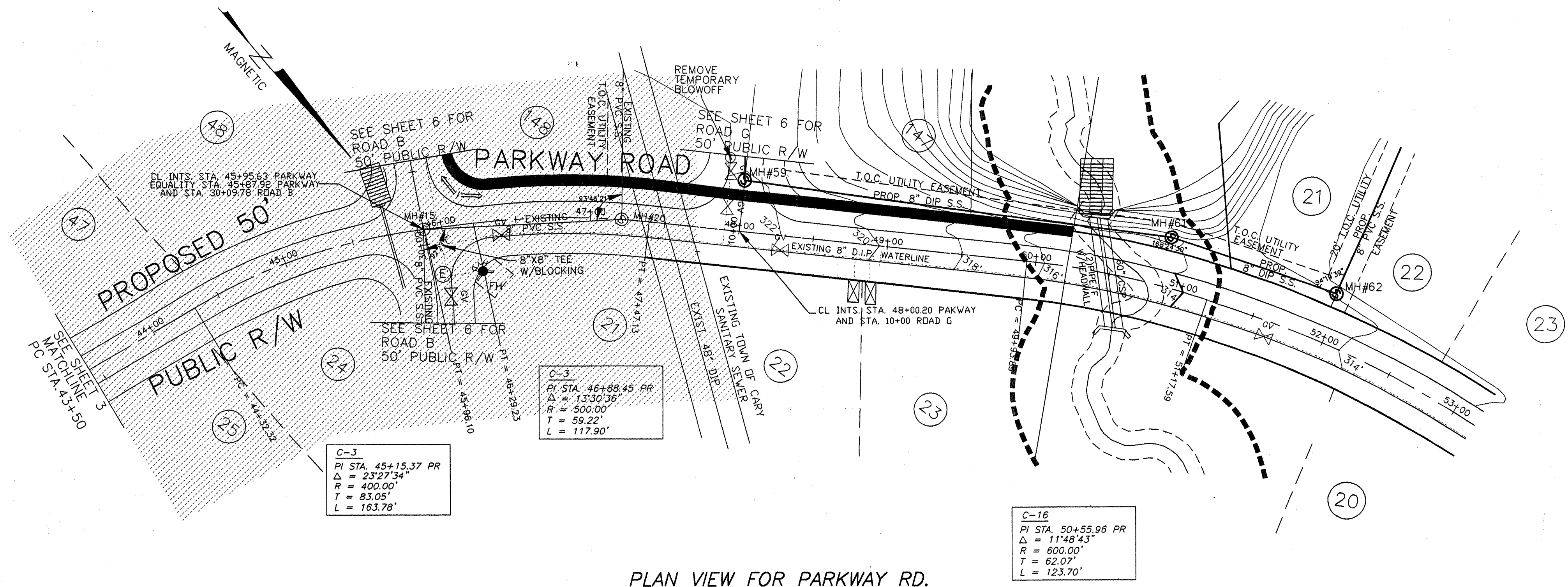


- LEGEND**
- RIP RAP ENERGY DISSIPATOR
 - ▭ CUSTOM BASIN
 - TEMPORARY MATTING
 - ENKA MAT
 - ⊙ STORM SEWER PIPE
 - DIVERSION FENCING
 - ▨ GRAVEL CONSTRUCTION ENTRANCE
 - SILT FENCE
 - LEVEL SPREADER
 - FLARED END SECTION



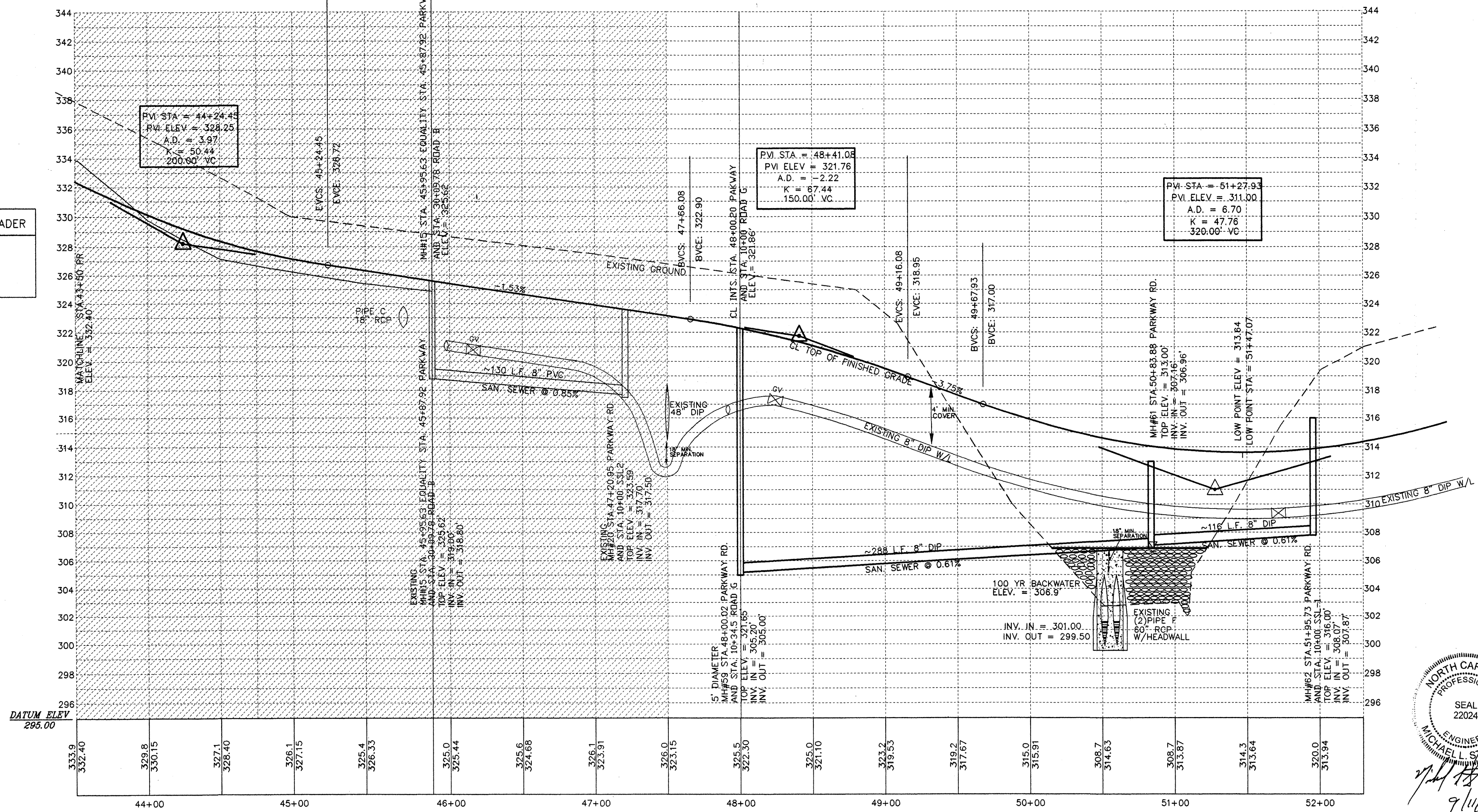
LOCATION, QUANTITY, AND PLACEMENT OF DRAINAGE PIPES AND EROSION CONTROL DEVICES MAY VARY TO BETTER CONFORM TO FIELD CONDITIONS.

ALL WORK AND MATERIALS SHALL CONFORM TO THE STANDARDS AND SPECIFICATIONS OF WAKE COUNTY, NCDOT AND TOWN OF CARY. THE CONTRACTOR SHALL OBTAIN A COPY OF THESE STANDARDS PRIOR TO CONSTRUCTION.

CUSTOM BASIN	DRAINAGE AREA (Ac.)	DENUDED AREA Ac.	STORAGE REQUIRED	STORAGE PROVIDED	BASIN SIZE W x L x D	WEIR LENGTH
CB #1	4.9	1.2	8894 CF	9020 CF	41'x55'x5'	12'
CB #2	3.1	1.7	5627 CF	5824 CF	26'x56'x5'	10'
CB #3	6.9	1.7	12524 CF	12784 CF	34'x94'x5'	16'
CB #4	5.0	2.5	9075 CF	10200 CF	30'x85'x5'	12'
CB #5	0.4	0.3	726 CF	800 CF	10'x20'x5'	10'
CB #6	9.4	2.4	17061 CF	17280 CF	45'x96'x5'	22'

INSPECT BASINS AFTER EACH RAINFALL OCCURRENCE
 BASINS ARE TO BE CLEANED AS NEEDED
 DEPTH INCLUDES 1' FREEBOARD
 ALL SEDIMENT LADEN RUNOFF SHALL BE DIVERTED INTO AN EROSION CONTROL DEVICE

CUSTOM BASIN	DRAINAGE AREA	C	I ST FLUSH Q	FACTOR	LENGTH	LEVEL SPREADER
CB #3	6.9 AC.	0.50	1 3.45 CFS	13	#2	45'
CB #7	4.84 AC.	0.45	1 2.18 CFS	13	#7	29'
CB #8	7.75 AC.	0.48	1 3.68 CFS	13	#8	48'
CB #9	15.39 AC.	0.45	1 6.93 CFS	13	#9	90'



NORTH CAROLINA PROFESSIONAL ENGINEER
 SEAL 22024
 MICHAEL ST. MICHAEL
 9/11/07

07-SP-057
 APPROVED
 TOWN OF CARY
 Approved by *DSC* Date 01-03-08
 Planning *JCB* Date 01-08-08
 Engineering *SS ZB* Date 01-11-08
 4-14-08

PROFILE VIEW FOR PARKWAY RD.

SP	STEWART-PROCTOR ENGINEERING and SURVEYING 319 CHAPANOKE ROAD SUITE 108 RALEIGH, NC 27603 TEL. 919 779-1855 FAX 919 779-1661		ROADWAY PLANS FOR THE PARK AT WESTLAKE THE HERITAGE PHASE 2 SF4-5	
	DATE 12-15-03	SURVEYED BY	JOB	MIDDLE CREEK TOWNSHIP NORTH CAROLINA
	SCALE 1"=50'	DRAWN BY	DWG. NO.	WAKE COUNTY OWNER: WINSLOW PROPERTIES
REVISIONS		ZONED R-30 P.I.N. 0679-13-1616		

SCALE: 1" = 50' (HORIZONTAL)
 1" = 5' (VERTICAL)

NOTE: PRELIMINARY PLANS. DO NOT USE FOR CONSTRUCTION.