

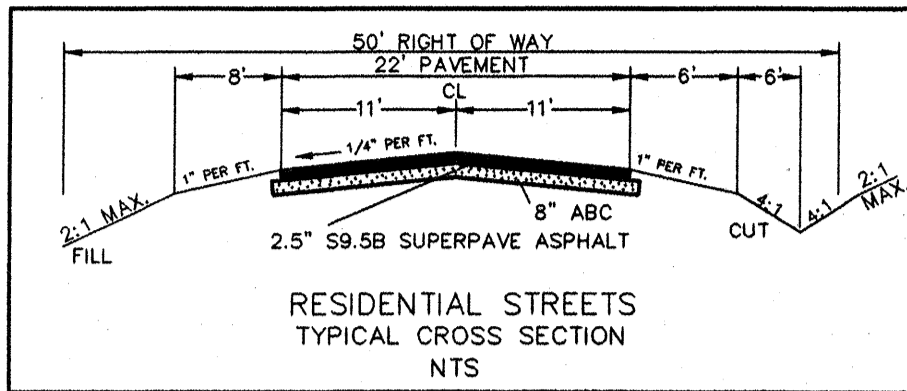
CUSTOM BASIN	DRAINAGE AREA	C	1 ST FLUSH Q	FACTOR	LENGTH	LEVEL SPREADER
CB #3	6.9 AC.	0.50	1	3.45 CFS	13	#2 45'
CB #7	4.84 AC.	0.45	1	2.18 CFS	13	#7 29'
CB #8	7.75 AC.	0.48	1	3.58 CFS	13	#8 48'
CB #9	15.39 AC.	0.45	1	6.93 CFS	13	#9 90'

CUSTOM BASIN	DRAINAGE AREA (Ac.)	DENUDED AREA Ac.	STORAGE REQUIRED	STORAGE PROVIDED	BASIN SIZE W x L x D	WEIR LENGTH
CB #3	6.9	1.7	12524 CF	12784 CF	34'x94'x5'	16'
CB #7	4.84	1.31	8784 CF	9248 CF	34'x68'x5'	15'
CB #8	7.75	2.76	14066 CF	14280 CF	42'x85'x5'	25'
CB #9	15.39	4.16	27933 CF	28800 CF	60'x120'x5'	47'

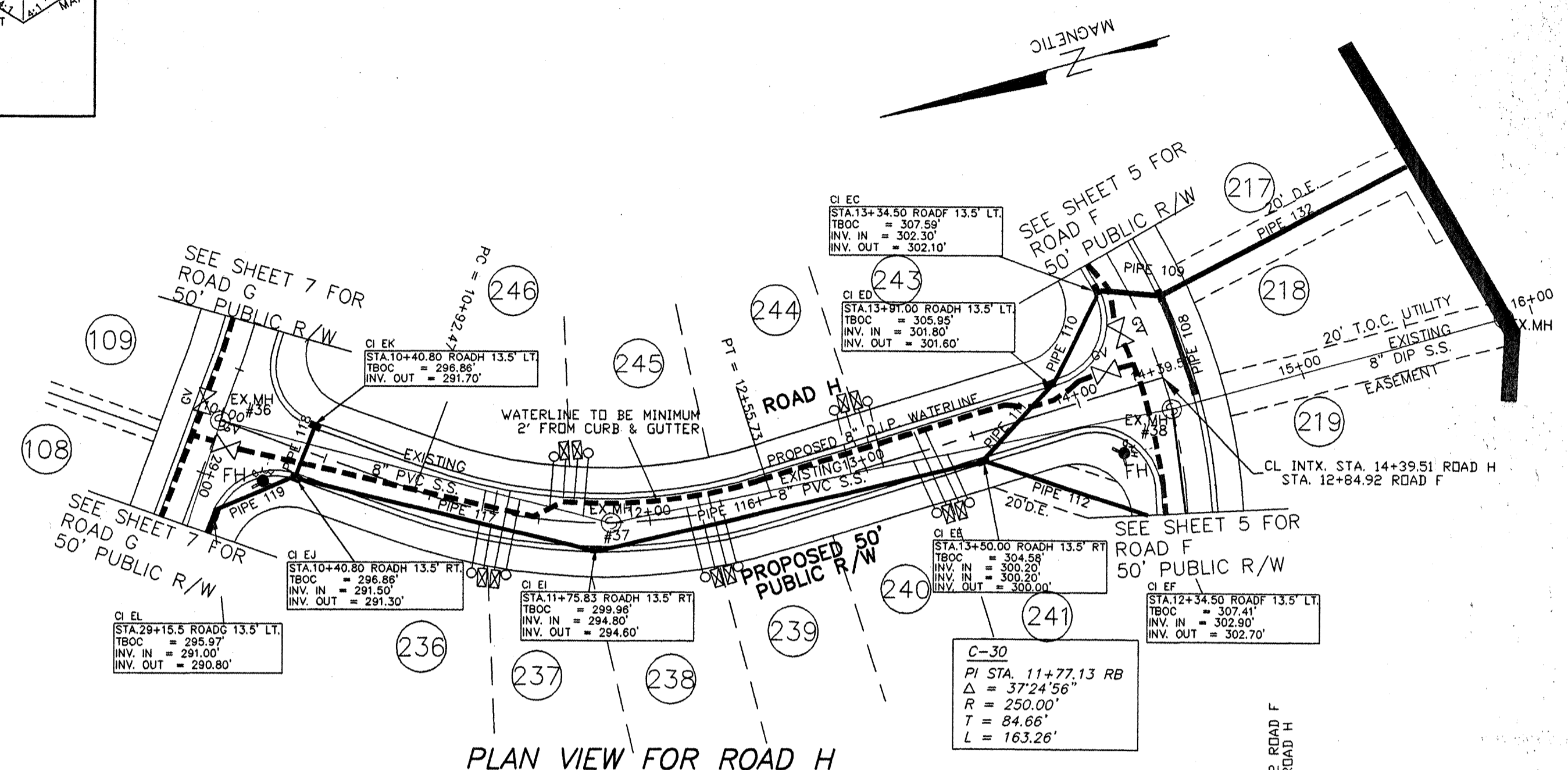
INSPECT BASINS AFTER EACH RAINFALL OCCURANCE
 BASINS ARE TO BE CLEANED AS NEEDED
 DEPTH INCLUDES 1' FREEBOARD
 ALL SEDIMENT LADEN RUNOFF SHALL BE DIVERTED INTO AN EROSION CONTROL DEVICE

LOCATION, QUANTITY, AND PLACEMENT OF DRAINAGE PIPES AND EROSION CONTROL DEVICES MAY VARY TO BETTER CONFORM TO FIELD CONDITIONS.

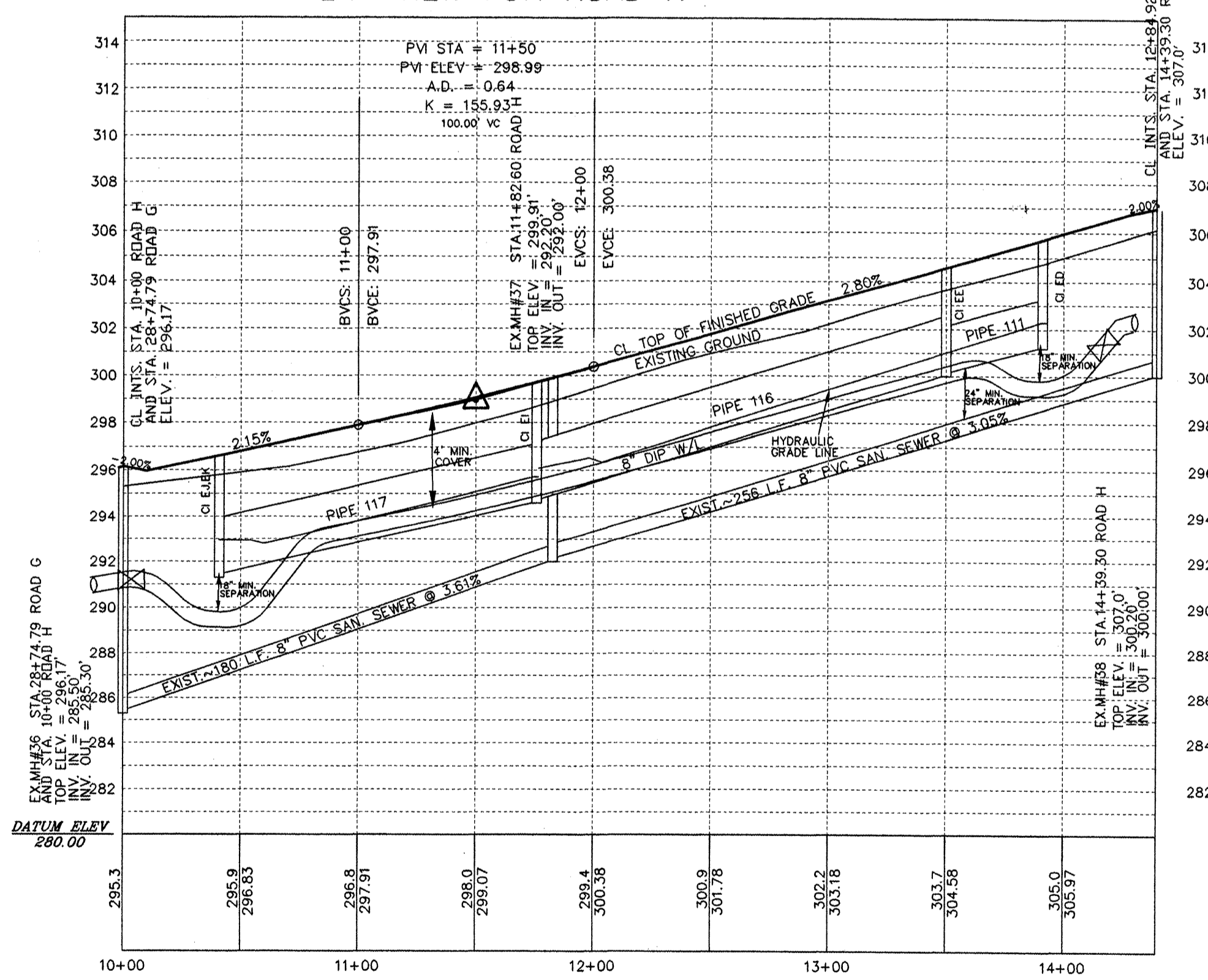
ALL WORK AND MATERIALS SHALL CONFORM TO THE STANDARDS AND SPECIFICATIONS OF WAKE COUNTY, NCDOT AND TOWN OF CARY. THE CONTRACTOR SHALL OBTAIN A COPY OF THESE STANDARDS PRIOR TO CONSTRUCTION.



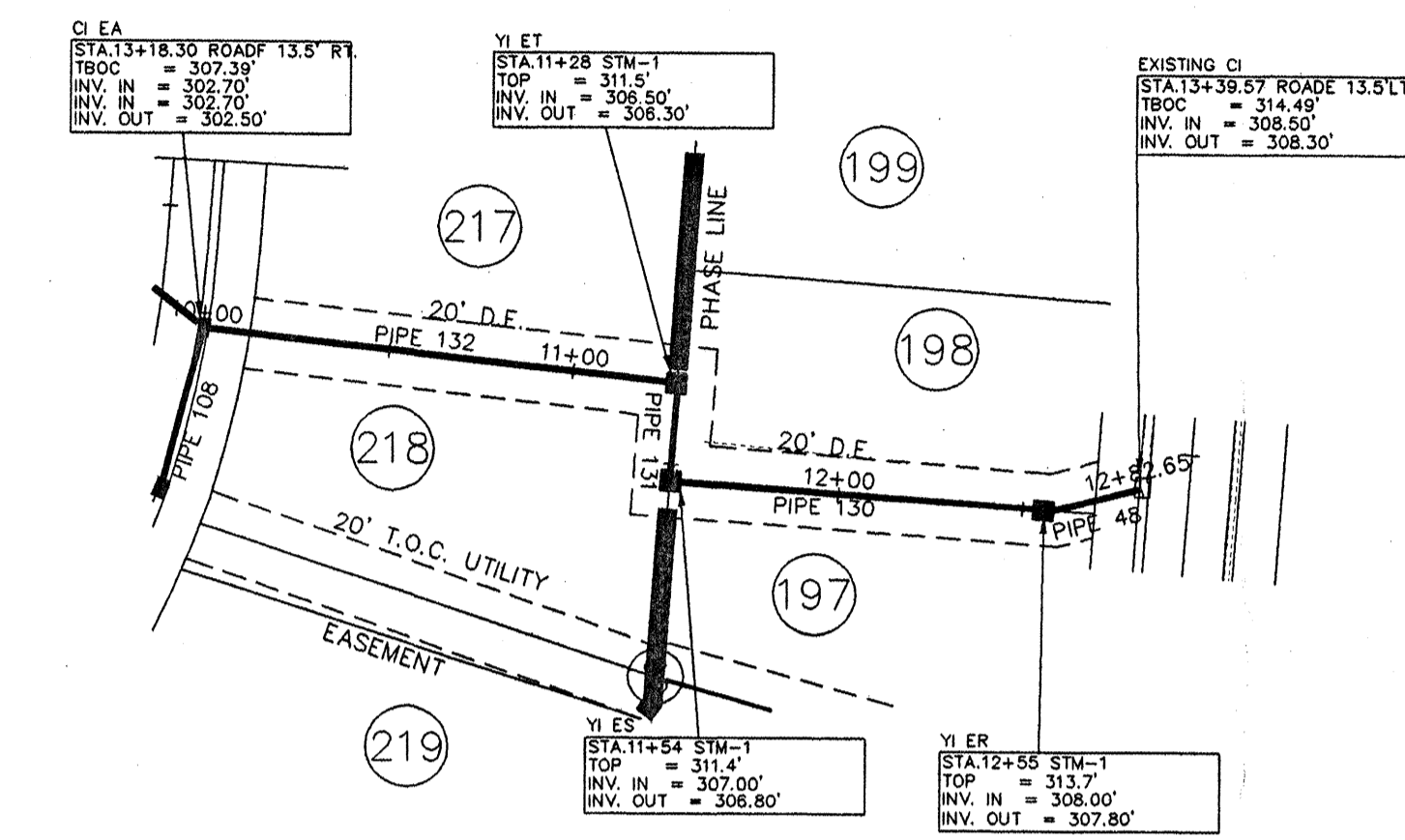
- LEGEND**
- RIP RAP ENERGY DISSIPATOR
 - ▭ CUSTOM BASIN
 - - - TEMPORARY MATTING
 - - - ENKA MAT
 - ⊙ STORM SEWER PIPE
 - ➔ DIVERSION FENCING
 - ▨ GRAVEL CONSTRUCTION ENTRANCE
 - - - SILT FENCE
 - ||| LEVEL SPREADER



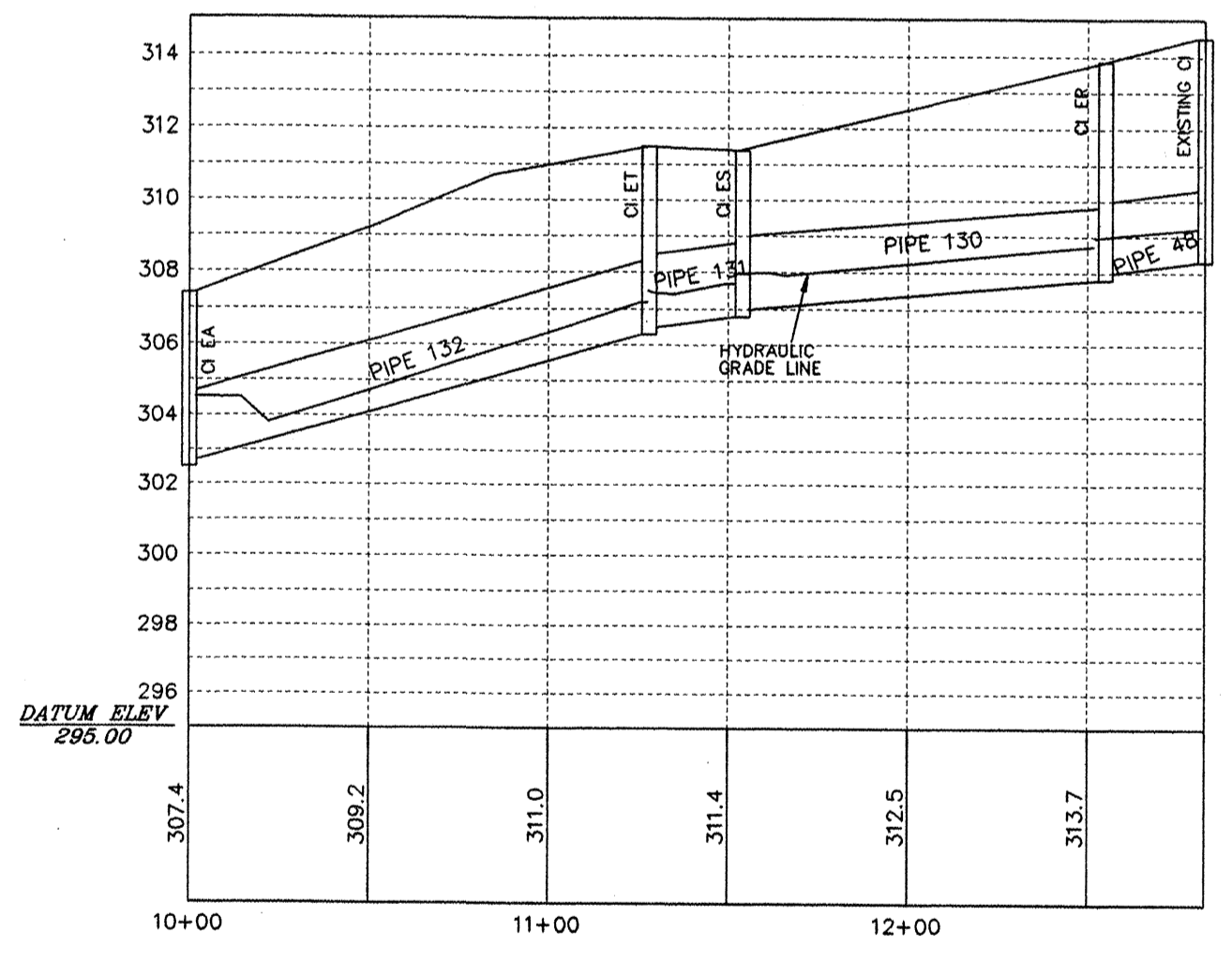
PLAN VIEW FOR ROAD H



PROFILE VIEW FOR ROAD H



PLAN VIEW FOR STM-1



PROFILE VIEW FOR STM-1

07-SP-057
 APPROVED
 TOWN OF CARY
 Approved by DRC Date 01-02-08
 Planning DEB Date 01-08-08
 Engineering SS Date 01-10-08
4-14-08



SCALE: 1" = 50' (HORIZONTAL)
 1" = 5' (VERTICAL)

NOTE: PRELIMINARY PLANS. DO NOT USE FOR CONSTRUCTION.

SP	STEWART-PROCTOR ENGINEERING and SURVEYING 319 CHAPANOKE ROAD SUITE 106 RALEIGH, NC 27603 TEL: 919 779-1855 FAX 919 779-1661		ROADWAY PLANS FOR THE PARK AT WESTLAKE THE HERITAGE PHASES 2 SF4-5	
	DATE 8-25-06	SURVEYED BY	JOB	MIDDLE CREEK TOWNSHIP
	SCALE 1"=50'	DRAWN BY	DWG. NO.	NORTH CAROLINA
REVISIONS		OWNER: WINSLOW PROPERTIES		ZONED R-30