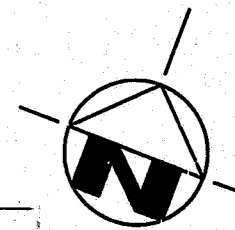
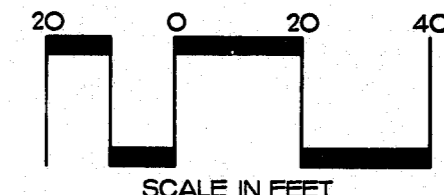


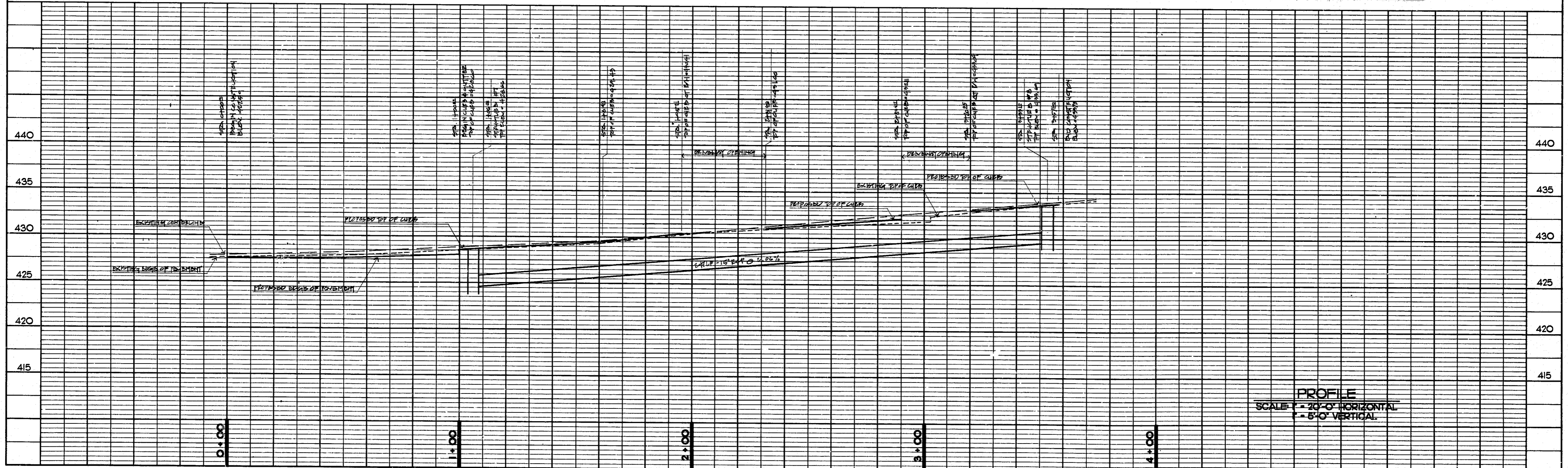
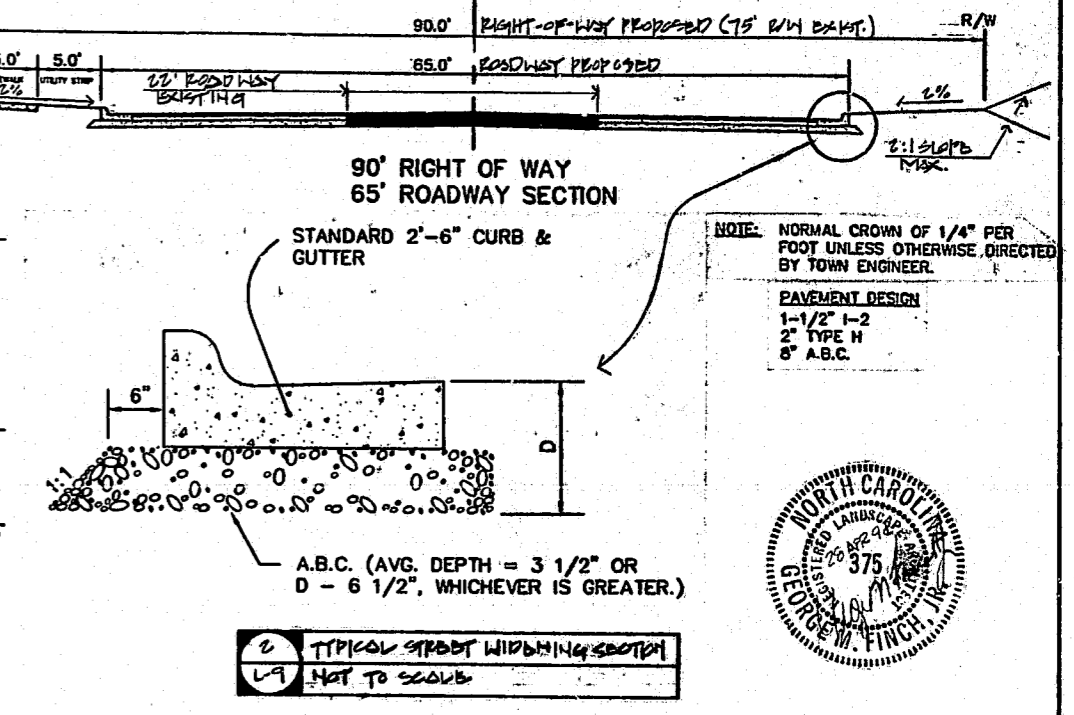
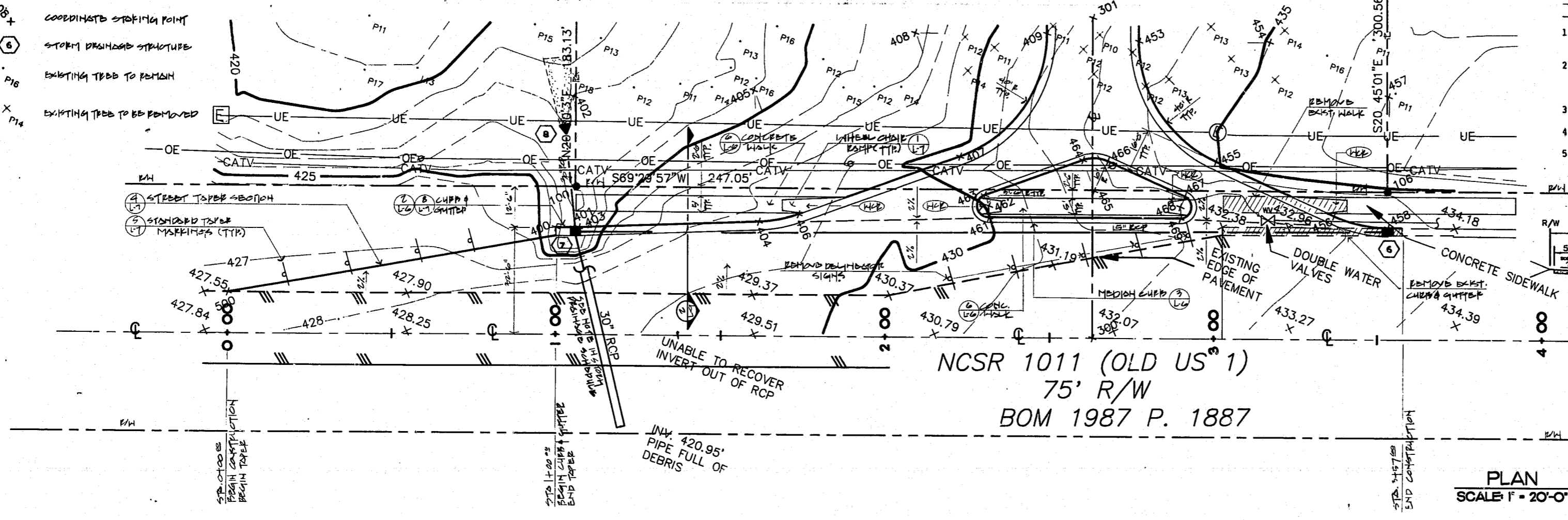
LEGEND SYMBOL	DESCRIPTION
433.27	EXISTING SPOT GRADE
433.27	PROPOSED SPOT GRADE
408	WHEELCHAIR RAMP SEE DETAIL P/L1
408+	COORDINATE STAKING POINT
6	STORM DRAINAGE STRUCTURE
P16	EXISTING TREE TO REMAIN
X P14	EXISTING TREE TO BE REMOVED

STORM DRAINAGE SCHEDULE											
KEY	STRUCTURE	SEE DETAIL	TOP ELEV.	INLET ELEV.	INV. IN	INV. OUT	CUMUL. DISCH.	DISCHARGE PIPE	GRADE PERCENT	VELOCITY	AVAILABLE Q
6	CURB INLET	1/L-6	433.89	433.02		429.99	1.79 CFS	247 LF-15" RCP	2.06%	5.84 FPS	7.48 CFS
*7	CURB INLET	1/L-6	428.66	427.99	424.50(5)		3.57 CFS	30" RCP			
*8	FLARED END SECT.	8/L-5									

*NOTE: INVERT IN OF 30" RCP AT STRUCTURE #7, INVERT OUT OF STRUCTURE #7, AND LOCATION AND INVERT OUT OF STRUCTURE #8 TO BE SET IN FIELD



- NOTES
- 1) See Sheet L-1 for general project notes, staking coordinates northing and easting, pavement markings, and signage.
 - 2) See Sheet L-2 for construction sequence, grading notes, seeding for erosion control, storm drainage schedule, erosion control measures, and temporary barricade location.
 - 3) See Sheet L-3 for planting and planting notes.
 - 4) See utility drawings for water main extension.
 - 5) All construction shall be performed in accordance with Town of Cary and North Carolina Department of Transportation standard specifications and details where applicable.



NCSR 1011 WIDENING/PLAN & PROFILE
PARKWAY ANIMAL HOSPITAL
 NCSR 1011 (OLD U.S. 1)
 CARY, NORTH CAROLINA

GEORGE FINCH, LANDSCAPE ARCHITECT, P.A. / LANDSCAPE ARCHITECTURE - SITE PLANNING
 601 OBERLIN ROAD, SUITE 200
 RALEIGH, NORTH CAROLINA 27605
 919/833-1212

REVISIONS
 A. SUBMITTED FOR PERMITTING & CONSTRUCTION
 21 APRIL 1994

DRAWN BY: ABC
 CHECKED BY: GMF
 PROJECT BY: 93-37
 DATE: 29 APRIL 1994
L-9
 SHEET OF