

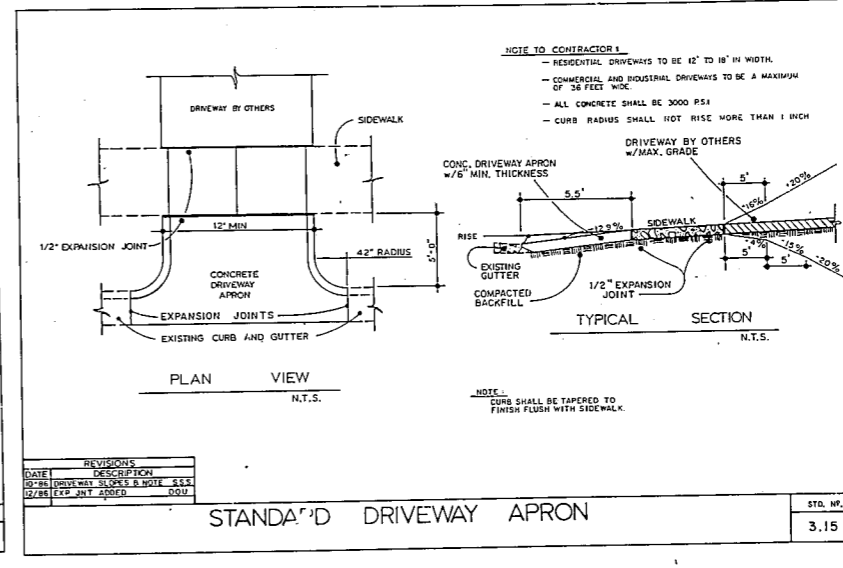
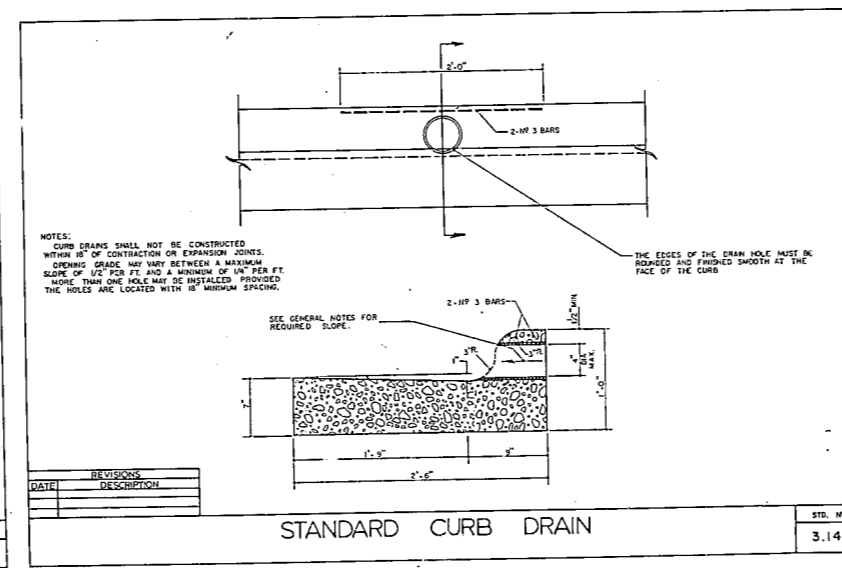
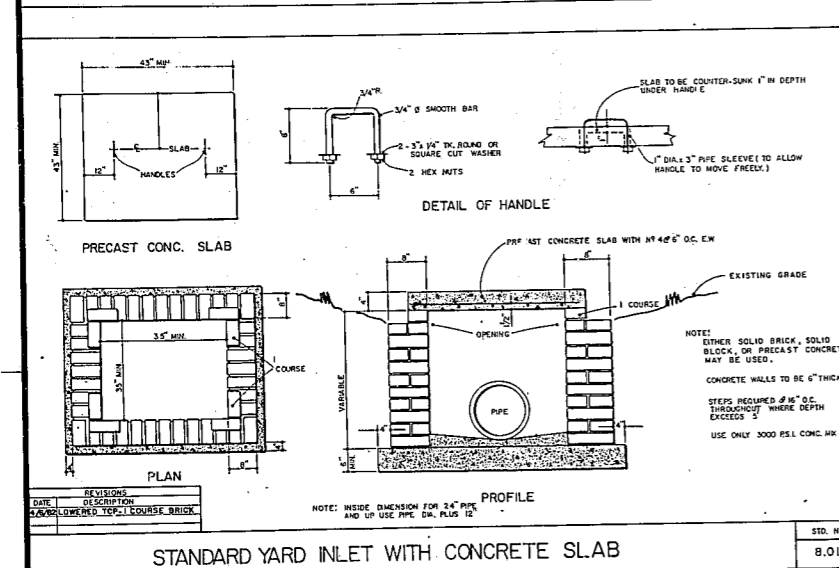
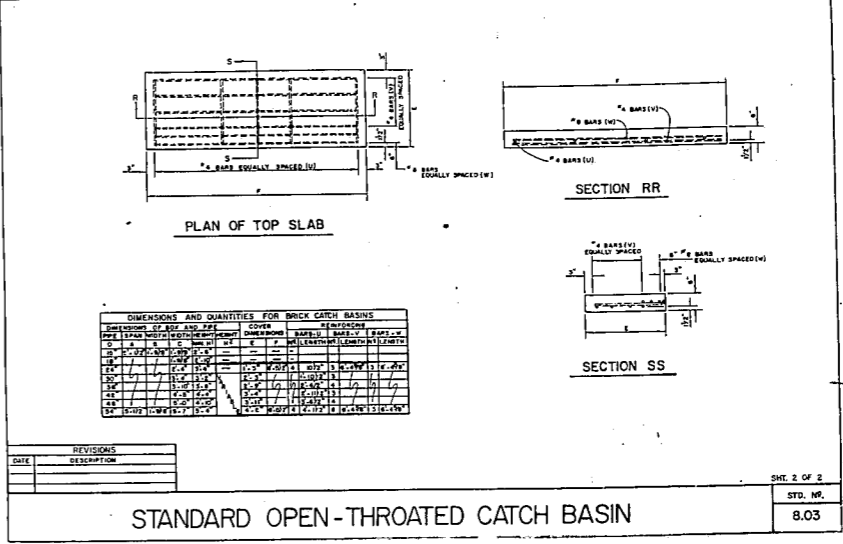
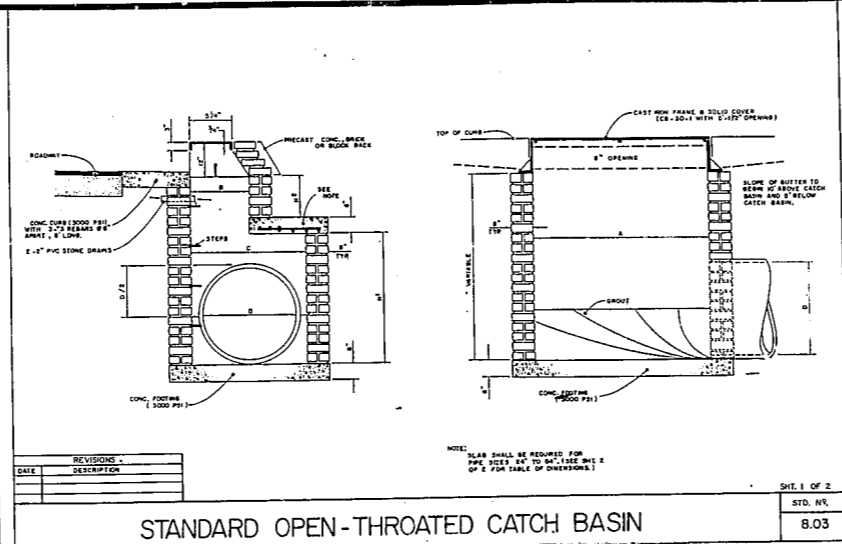
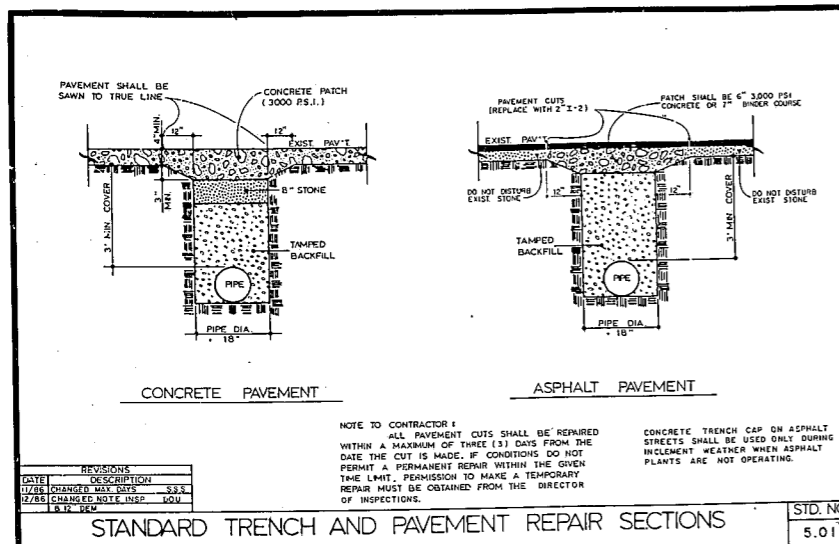


**Dewberry & Davis**  
Architects Engineers Planners Surveyors

**TRACT M-6**  
PARKWAY P.U.D., CARY, N.C.  
RICHLAND PROPERTIES

STANDARD STORM DRAINAGE DETAILS

Scale  
AS SHOWN  
Sheet  
**9**  
of 9  
Date  
JULY 1988  
File Number  
86016



APR 5 1989

DAVID F. STORVICK  
REGISTERED PROFESSIONAL ENGINEER  
NO. 7952  
STATE OF NORTH CAROLINA

DAVID F. STORVICK  
REGISTERED PROFESSIONAL ENGINEER  
NO. 7952  
STATE OF NORTH CAROLINA