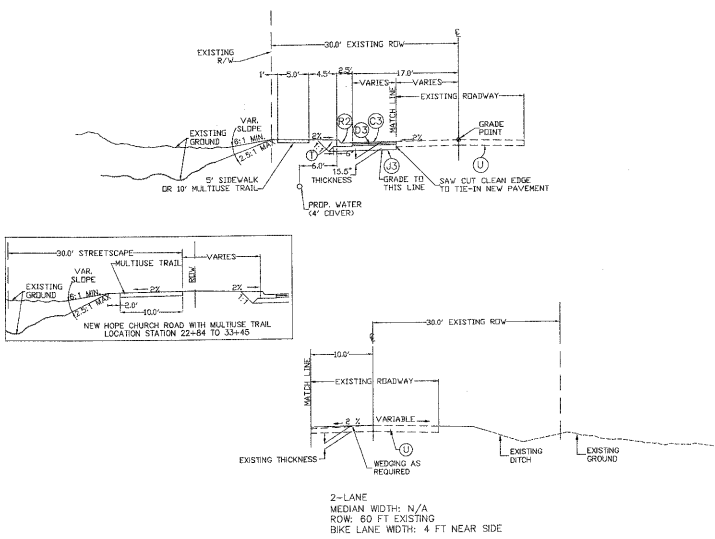


The Peninsula at Amberly
 Yates Store Road - Cary, NC

GS Carolina Road, Suite 300
 11600 North Carolina
 Charlotte, NC 28277

REVISIONS	DATE	DESCRIPTION
1/5/04		REVISED PER TOC COMMENTS
2/23/04		REVISED PER TOC COMMENTS
4/04		REVISED PER TOC COMMENTS

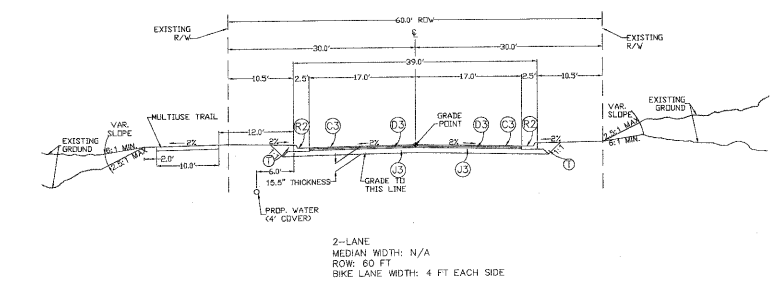
PROJECT #: 03423 DATE: 11/03/03
 DRAWN BY: SLS CHECKED BY: JRE
 TITLE:
NEW HOPE CHURCH ROAD
STANDARD SECTION
 SHEET
C7.0.1



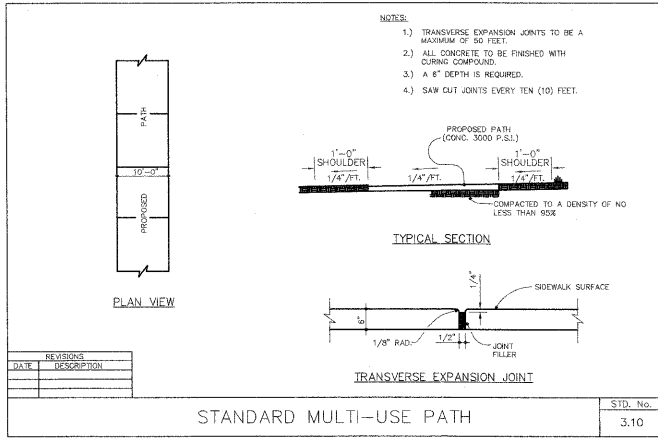
NEW HOPE CHURCH ROAD (SR 1733)
 WIDENED SECTION STA 10+00 TO 25+89.46
 39' BB, 60' ROW

PAVEMENT SCHEDULE			
DESCRIPTION	THICKNESS	AVERAGE RATE	MAXIMUM LAYER PLACEMENT
C3 ASPHALT CONCRETE SURFACE COURSE TYPE S9.5A	2.5"	110 LBS./SQ. YD./1" DEPTH	1.5"
D3 ASPHALT CONCRETE INTERMEDIATE COURSE TYPE I19.0B	3"	114 LBS./SQ. YD./1" DEPTH	1.5"
E1 ASPHALT CONCRETE BASE COURSE TYPE B25.0C	4"	114 LBS./SQ. YD./1" DEPTH	4.0"
J3 AGGREGATE BASE COURSE	10"		THREE LIFTS
U EXISTING PAVEMENT			
T EARTH MATERIAL			
R2 2'-6" CONCRETE CURB & GUTTER			

NOTE: 1) FOR WIDENED SECTIONS LESS THAN 6' IN WIDTH, USE BASE SECTION ET IN LIEU OF BASE SECTION J3
 2) ALL CONSTRUCTION MUST CONFORM TO THE CURRENT NCDOT AND TOWN OF CARY STANDARD SPECIFICATIONS AND DETAILS.



NEW HOPE CHURCH ROAD (SR 1733)
 REALIGNED SECTION STA 25+89.46 TO 33+50.29
 39' BB, 60' ROW



MULTIUSE PATH NOTE:
 1) LOCATION SHOWN ON THE PLANS IS APPROXIMATE. CONTRACTOR SHALL CONSTRUCT MULTIUSE PATH WITHIN THE STREETSCAPE THAT WILL MINIMIZE TREE CLEARING AND IMPACTS TO ANY STREAM.
 2) PLACE MULTIUSE PATH FOLLOWING DESIGN CRITERIA SHOWN IN THE "AASHTO GUIDE FOR THE DEVELOPMENT OF BICYCLE FACILITIES".

03-SB-012
 APPROVED
 TOWN OF CARY
 Approved by: ORC Date: 8-2-04
 Planning: BO Date: 8-27-04
 Engineering: JB Date: 8-20-04