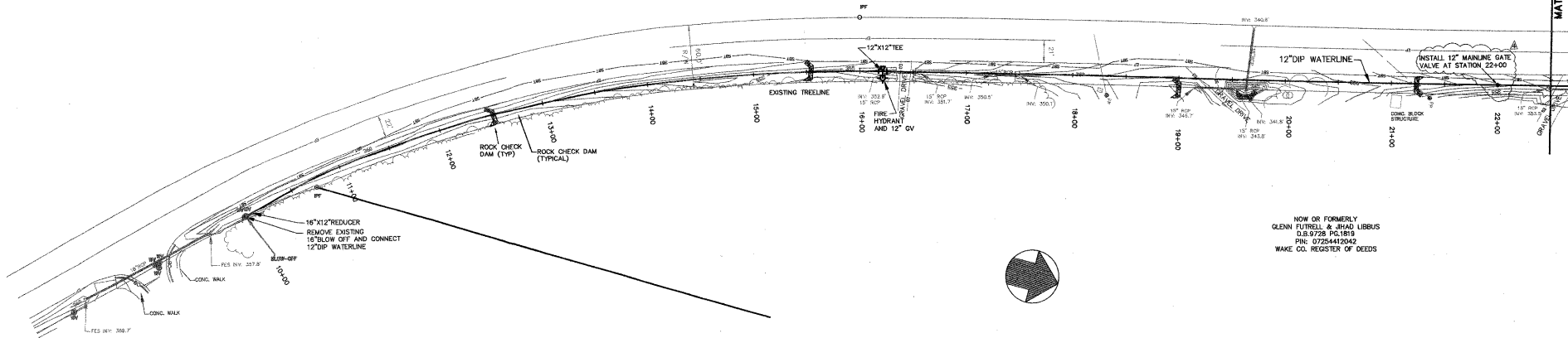


YATES STORE ROAD S.R. 1626 (60' PUBLIC R/W)

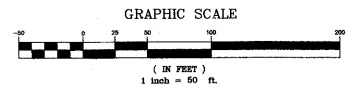
MATCH LINE 1



NOW OR FORMERLY
PANTHER CREEK RALEIGH LIMITED PARTNERSHIP
S.B. 7250 PG. 893
PIN: 0725448255
WAKE CO. REGISTER OF DEEDS

NOW OR FORMERLY
GLENN FUTRELL & JHAD LIBBIS
O.B. 9726 PG. 1819
PIN: 0725441092
WAKE CO. REGISTER OF DEEDS

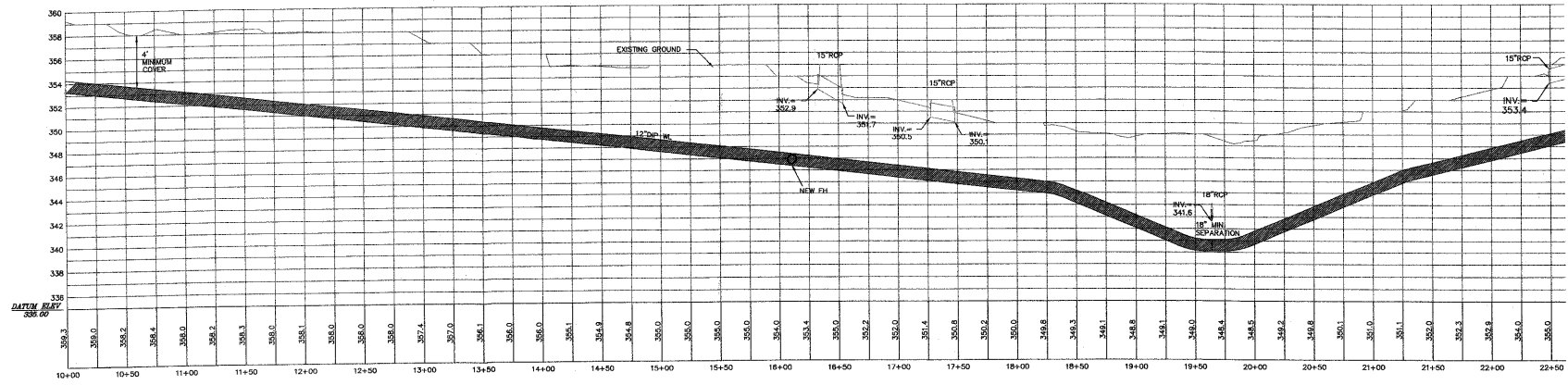
CONTRACTOR TO CONFIRM
EXISTING UTILITY AND STORM
DRAINAGE INFORMATION PRIOR
TO CONSTRUCTION



VERTICAL SCALE : 1" = 5'

03-SS-012
APPROVED
TOWN OF CARY

Approved by DRC Date 8-2-03
Planning TS Date 8-7-04
Engineering TS Date 8-20-04



CHAS. H. SELLS, INC.
15300 Westover Parkway
Cary, NC 27513
Tel: 919-678-0035
Fax: 919-678-0206
www.chasells.com



The Peninsula at Amberly
Yates Store Road - Cary, NC

REVISIONS

1/5/04	REVISED PER TOC COMMENTS
2/23/04	REVISED PER TOC COMMENTS
4/5/04	REVISED PER TOC COMMENTS
Δ	REVISED - 06/21/04

PROJECT #: 03423 DATE: 11/03/03
DRAWN BY: SLS CHECKED BY: JBR
TITLE

**OFFSITE WATERLINE
PLAN/PROFILE**
SHEET
C3.2.1

© CHASSELLS, INC. ALL RIGHTS ARE RESERVED. ANY REPRODUCTION OR OTHER USE OF THIS DOCUMENT WITHOUT PRIOR PERMISSION FROM CHAS. H. SELLS, INC. IS EXPRESSLY PROHIBITED.

CS Carolina
Community Engineers, Road, Suite 200
Charlotte, NC 28277