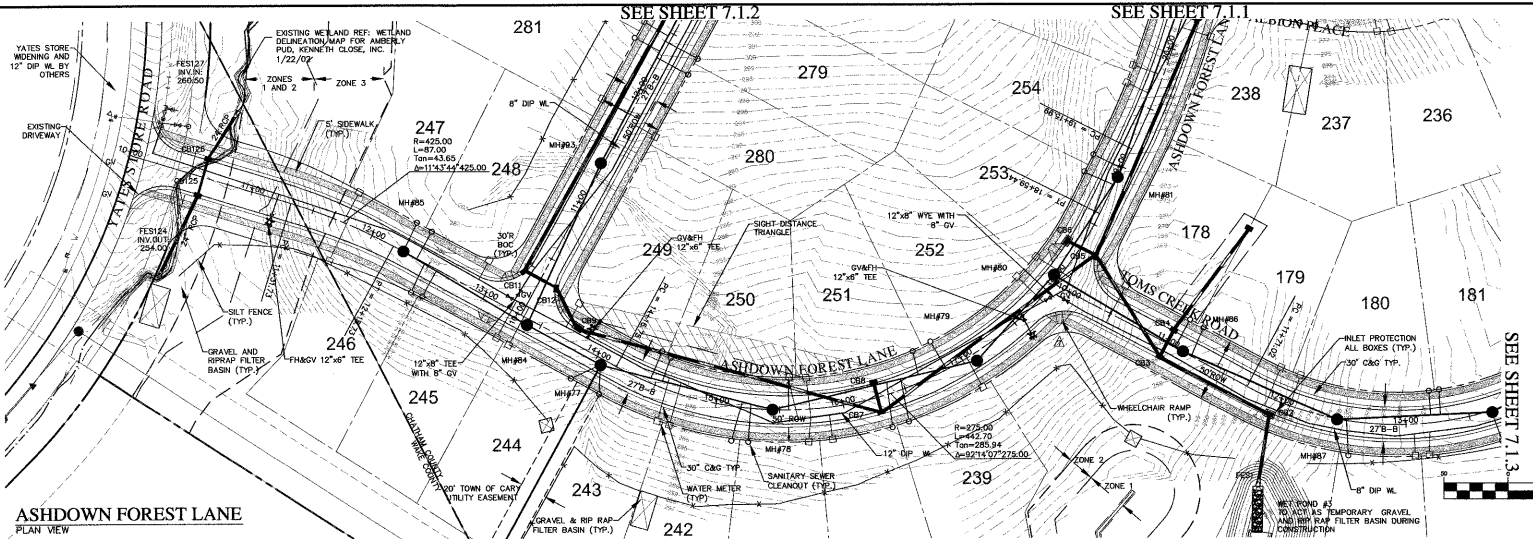
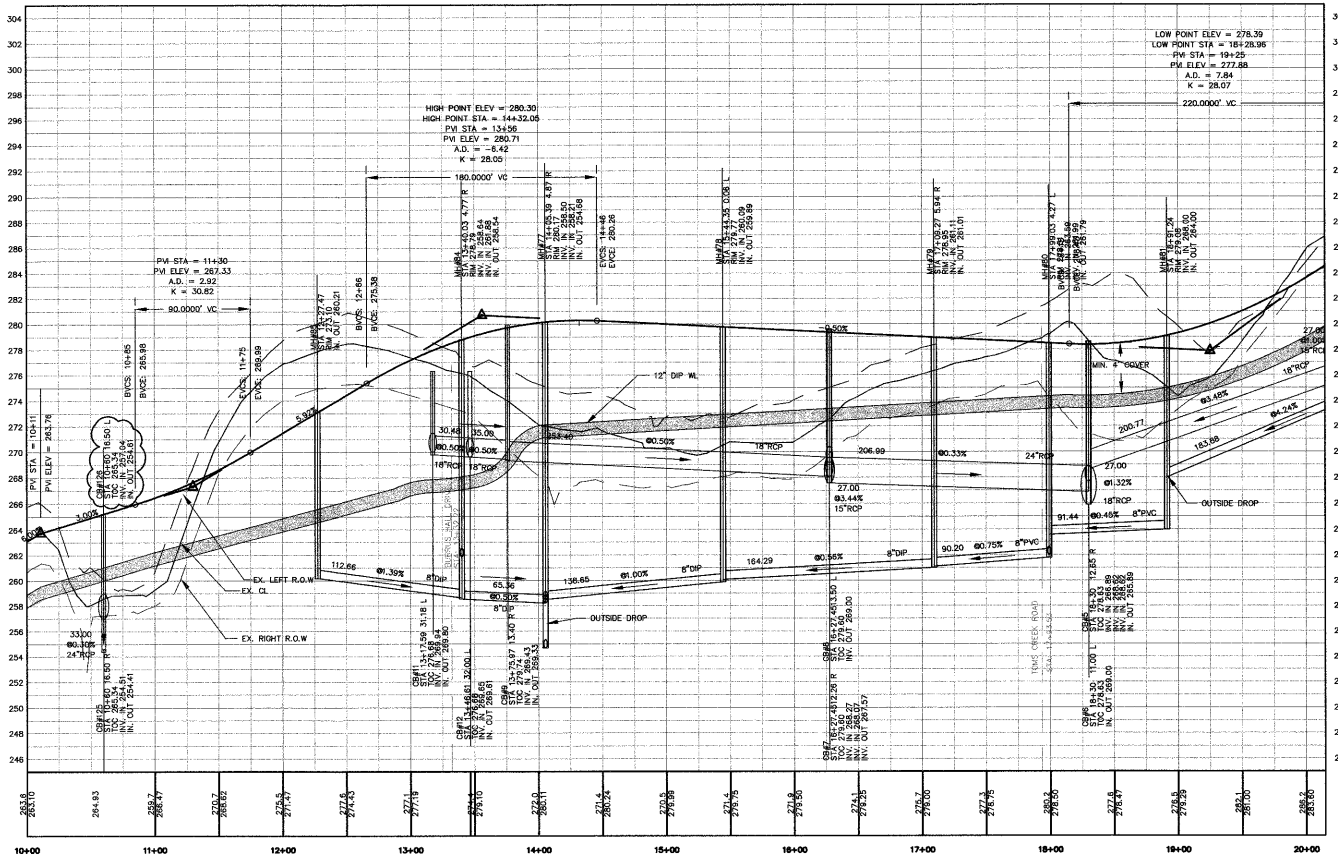
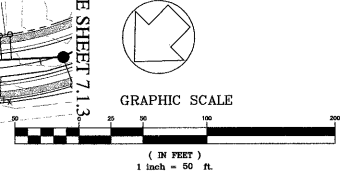


NOTES:
 ALL FIRE HYDRANTS ARE TO BE LOCATED BETWEEN THE SIDEWALK AND CURB
 ALL AIR RELEASE VALVES TO CONFORM TO "STANDARD COMBINATION AIR RELEASE MANHOLE", CARY STANDARD 6.15, SHEET 2 OF 2.



ASHDOWN FOREST LANE
 PLAN VIEW



ASHDOWN FOREST LANE
 PROFILE

03-SB-012
 APPROVED
 TOWN OF CARY
 Approved by *OC* Date *8-1-04*
 Planning *APP* Date *8-27-04*
 Engineering *TS* Date *8-20-04*

SCALE: (H) 1"=50'
 (V) 1"=5'

CHAS. H. SELLS, INC.
 Consulting Engineers, Surveyors & Photogrammetrists
 15306 Western Parkway
 Suite 106
 Cary, NC 27513
 Tel: 919-678-0035
 Fax: 919-678-0206
 www.chsells.com



RELEASED FOR
 CONSTRUCTION
 The Peninsula at Amberly
 Yates Store Road - Cary, NC
 GS Carolina
 11600 North Community House Road, Suite 200
 Charlotte, NC 28277

REVISIONS	
1/5/04	REVISED PER TOC COMMENTS
2/3/04	REVISED PER TOC COMMENTS
4/5/04	REVISED PER TOC COMMENTS
Δ	REVISED - 05/17/04
Δ	REVISED - 07/28/04

PROJECT #: 03423 DATE: 11/03/03
 DRAWN BY: SLS CHECKED BY: JBB
 TITLE: ROAD PLAN & PROFILES ASHDOWN FOREST LANE
 SHEET: **C7.1.0**

© CHAS. SELLS, INC. ALL RIGHTS ARE RESERVED. ANY REPRODUCTION OR OTHER USE OF THIS DOCUMENT WITHOUT THE PERMISSION FROM CHAS. H. SELLS, INC. IS EXPRESSLY PROHIBITED.