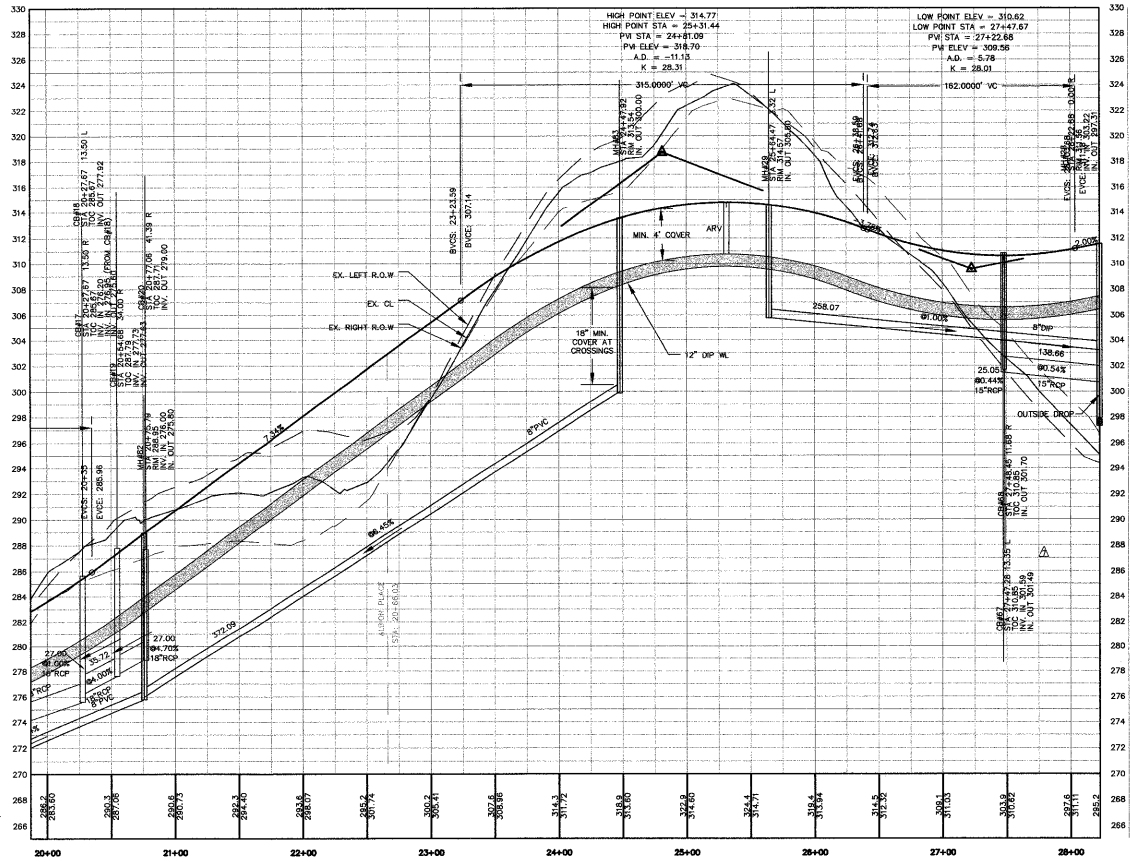
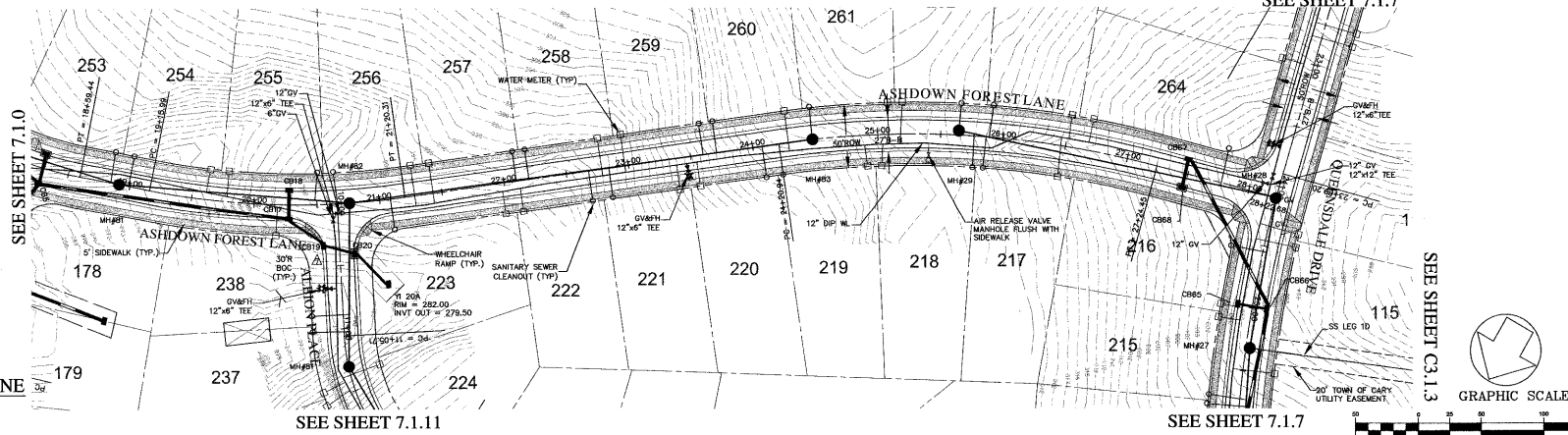


NOTES:
 ALL FIRE HYDRANTS ARE TO BE LOCATED BETWEEN THE SIDEWALK AND CURB
 ALL AIR RELEASE VALVES TO CONFORM TO "STANDARD COMBINATION AIR RELEASE MANHOLE", CARY STANDARD 6.15, SHEET 2 OF 2.

ASHDOWN FOREST LANE
 PLAN VIEW

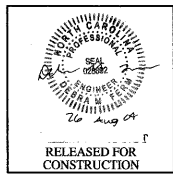


ASHDOWN FOREST LANE
 PROFILE

SCALE: (H) 1"=50'
 (V) 1"=5'

03-SB-012
 APPROVED
 TOWN OF CARY
 Approved by DEC Date 8-2-04
 Planning DEP Date 8-21-04
 Engineering TS Date 8-30-04

CHAS. H. SELLS, INC.
 Consultant Engineers, Surveyors & Photogrammetrists
 15300 Weston Parkway
 Suite 106
 Cary, NC 27513
 Tel: 919-678-0035
 Fax: 919-678-0206
 www.chsellss.com



The Peninsula at Amberly
 Yates Store Road - Cary, NC

REVISIONS	
1/5/04	REVISED PER TOC COMMENTS
2/23/04	REVISED PER TOC COMMENTS
4/5/04	REVISED PER TOC COMMENTS
▲	REVISED - 05/17/04
▲	REVISED - 07/28/04

PROJECT #: 03423 DATE: 11/03/03
 DRAWN BY: SLS CHECKED BY: JBE
 TITLE
ROAD PLAN & PROFILES ASHDOWN FOREST LANE
 SHEET
C7.1.1

CS Carolina
 11600 North Community House Road, Suite 200
 Charlotte, NC 28277

© CHAS. H. SELLS, INC. ALL RIGHTS ARE RESERVED. ANY POSSIBLE REPRODUCTION OR OTHER USE OF THIS DOCUMENT WITHOUT PRIOR PERMISSION FROM CHAS. H. SELLS, INC. IS EXPRESSLY PROHIBITED.